

SAFEMARK

TACKLE the SAVINGS



ON TOP VALUE

SAFEMARK TIRES

QUALITY • SERVICE • DEPENDABILITY • ECONOMY

**THE HARD WORKING
MULTI-ANGLE M/B**

- Excellent drawbar pull with long-bar, short-bar lugs for improved traction
- Designed for improved stability and roadability, plus reduced vibration
- Strong angle-braced lugs have self-cleaning design
- High-strength polyester cord body, and heavy duty rim shield protects tire from damage



Size	Price
12.4-28 4 Ply	\$159.00
13.6-28 4 Ply	\$179.00
15.5-38 6 Ply	\$289.00
18.4-34 6 Ply	\$379.00
18.4-38 6 Ply	\$409.00
18.4-38 8 Ply	\$449.00
20.8-38 8 Ply	\$589.00

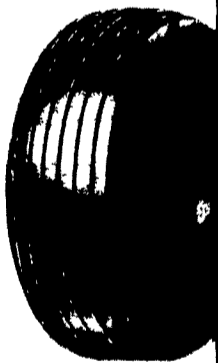
POWER MARK L/S RADIAL II
Radial Rear Tractor Tire

- Radial performance at a significantly lower price
- New cavity shape for low carcass stress and long narrow footprint improved durability
- Unique longbar/shortbar tread design with increased lug count for excellent roadability
- Continuous no splice tread improves tire uniformity and eliminates open tread splices
- Belt package gives excellent bruise and puncture resistance
- Engineered to full Tire and Rim dimensions
- Heavy duty trash shield for extra bead area protection with pry notch
- Size markings on lug face for easy identification in storage



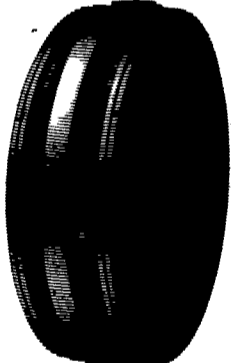
Size	PRICE
15.5R38 ★	\$339.00
18.4R34 ★	\$449.00
18.4R38 ★	\$499.00
20.8R38 ★	\$639.00

**FARM
UTILITY
WAGON
TIRES**



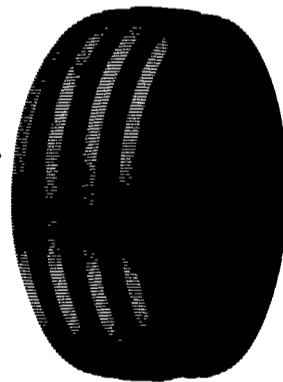
Size	Ply	Sale Price
9.5L-15	8 Ply	\$44.00
11L-15	8 Ply	\$45.00
11L-15	12 Ply	\$64.00
12.5L-15	10 Ply	\$72.00
12.5L-16	14 Ply	\$89.00

**SAFEMARK
PREMIUM**



Size	Ply	Price
600-16	4 Ply	\$36.00
600-16	6 Ply	\$39.00
750-16	6 Ply	\$56.00
1000-16	8 Ply	\$82.00
1100-16	8 Ply	\$99.00

**POWER
GLIDE**



4 Rib

Size	Ply	Price
1000-16	8 Ply	\$ 86.00
1100-16	8 Ply	\$109.00



**BATTERY
BARGAIN**

\$47.00
5-26 515 AMPS

- Dependable performance in all weather conditions
- Unique billboard vent appearance

- Higher cranking than conventional batteries
- Sizes to fit most domestic and import cars and light trucks

**FARM
TRAC TOR
BATTERIES**

\$66.00
FC-30H 560 AMPS

- Rugged high impact case and cover for vibration resistance



- Increased starting power
- Built to last season after season
- Made in the USA

**Participating
SAFEMARK Dealers**

- Adams**
Mar-Bar Tire Service
Hanover, PA 17331
(717) 633-6412
- Biglerville Tire & Auto**
Biglerville, PA 17307
(717) 677-8338
- Yinglings Implement**
Gettysburg, PA 17325
(717) 359-4848
- Blair**
Rhode's Farm Supply
Williamsburg, PA 16693
(814) 832-2491
- Bradford/Sullivan**
Hiland Farm & Home Service
Rome, PA 18837
(717) 744-2371
- Bradford**
Isaac's Tire Sales
Canton, PA 17724
(717) 673-8121
- Centre**
Dunkle & Grieb
Centre Hall, PA 16828
(814) 364-1421
- Chester/Delaware**
J&L Tire Service
Chatham, PA 19318
(215) 869-0450
- S.G. Lewis & Sons**
West Grove, PA 19390
(215) 869-2214
- Stoltzfus Farm Service**
Cochranville, PA 19330
(215) 593-2407/2408
- Clinton**
Dotterer Equipment, Inc.
Mill Hall, PA 17751
(717) 726-3471
- Columbia**
Steve Shannon Tire Co., Inc.
Bloomsburg, PA 17815
(800) 343-TIRE
- Yost Tire & Auto Center**
Rte. 487, Benton, PA
(717) 925-2821
- Crawford**
J.D. Oil Supply
Springboro, PA 16435
(814) 587-2501
- Cumberland**
Barrick Tire Sales
Newville, PA 17241
(717) 776-5762
- Erie**
Mike's Auto Repair
North East, PA 16428
(814) 725-9091
- Franklin**
Forrester Farm Equip., LTD
Chambersburg, PA 17201
717-263-0705
- Stoneham's**
Waynesboro, PA 17268
(717) 762-3614
- Bruce B. Gamble & Sons**
Concord, PA 17217
(717) 349-2670
- Fulton**
Clugston Farm Equipment
Needmore, PA 17238
(717) 573-2215
- Greene**
Burns Tire Service
Waynesburg, PA 15370
412-627-8263
- Lancaster**
Leola Tire Service
Leola, PA 17540
(717) 656-2574
- Messick**
Farm Equipment
Lancaster, PA
(717) 367-1319
- Lebanon Valley Implement Co., Inc.**
Richland, PA 17087
(717) 866-7518
- Lehigh Co**
Kermit K. Kistler
Lynnport, PA 18066
(215) 298-2011
- Joe's Battery & Tire**
Allentown, PA 18103
(215) 437-4961
- Mifflin**
Miller-Lake, Inc.
Belleville, PA 17004
(717) 935-2335
- Northampton/Monroe**
Northampton Farm Bureau
Tatamy, PA 18085
(215) 759-3254
- Northumberland**
Rovendale Supply
Watsontown, PA 17777
717-538-5521
717-742-7521
- Schuylkill**
Charles Snyder, Inc.
Tamaqua, PA 18252
(717) 386-5945
- Somerset**
Maple City Tire
Meyersdale, PA 15552
(814) 634-0545
- Union**
Mifflinburg Farm Supply, Inc.
Mifflinburg, PA 17844
(717) 966-3114/3115
- Washington**
Canonsburg Supply & Equipment Co., Inc.
Canonsburg, PA 15317
(412) 746-2500
- David Cowden**
Avella, PA 15312
(412) 587-3225
- Wyoming Co.**
J. Roberts & Son Tire Co.
Meshoppen, PA 18630
(717) 833-5582
- York Co.**
Corn Hill Farm, Inc.
Elters, PA 17319
(717) 938-2012



SAFEMARK

Division of Pennsylvania Farmers' Association
Camp Hill, PA 17011

CALL TOLL FREE
1-800-PFA-TIRE

For Dealer Nearest You

A Proud Tradition of Quality,
Value and Service.

- QUALITY
- SERVICE

- DEPENDABILITY
- ECONOMY

**NOW SERVING
NEW YORK &
NEW JERSEY**