

TILLAGE

JD 4030 4 post w/quad, 2 remote, 80 H.P.
 IH 710 4x16 plow w/gauge wheel
 JD 1450 4x16 semi mount plow w/gauge wheel
 IH 510 4x16 plow, gauge wheel, side hill hitch
 IH 45 12' field cultivator, pull type, nice \$1,250
 IH 16' wheel harrow, hyd. fold, nice
MISC.
 NH 512 manure spreader, nice
 Brillion 11' cultipacker, 4" axle
 NH 256 rake, real good
 42' Little Giant elevator
 NH 352 grinder mixer w/extended auger
 Gehl 95 grinder mixer for parts
 JD 54 manure spreader for parts
 Farmall Cub power unit w/reduction
 Clutch, 8 hrs. since rebuilt
 IH 1150 grinder mixer, for parts
 NI 212, 3 beater manure spreader, good
 JD 300 26' elevator w/motor
 JD round bale grapple for front end loader
 IH 110 Forage Wagon, 3 beater w/Roof, Nice \$1,250
 NH 354 grinder mixer w/extended auger
 Gehl 65 grinder mixer, good
 1 set of dual wheels w/tires, 14 9x28

Balers & Haybines For Parts

KETTER'S USED FARM MACHINERY

Robert L. Ketter
 Halifax, PA 17032 (Carsonville)
 25 Miles North of Harrisburg
(717) 362-9096
 We Ship UPS!

COLLECTOR TRACTORS FOR SALE

JD Cultivator For M.....\$250
 JD B - Cyclone - Running - 1950? ..\$1,100
 JD A - Styled - Good Tin - 1947.....\$1,250
 JD B - Cyclone - Good Tin - 1950?.....\$1,450
 JD B - Cyclone - New Paint - 1949 ..\$1,450
 JD 620 - Runs - To Restore - 1957 ..\$1,950
 Oliver 66 w/Wide Front - 1953.....\$2,000
 JD G- Single Front- Runs - 1952.....\$2,500
 JD 40 Dozer - As Received - 1954.....\$2,500
 JD Styled D - Runs Good - 1941.....\$2,900
 (2) JD G- Runs Good - 1947 .. Each \$2,900
 JD Unstyled A - Runs Good - 1937 ..\$2,900
 JD Unstyled D - Runs Good - 1938 ..\$2,900
 Oliver OC46 Crawler Loader - As Is \$2,900
 JD R - Not Running - Good Tin - 1954\$2,900
 JD 420 Dozer - As Received - 1959.....\$2,900
 MM G705LP- Cab- 1650 Hours.....\$3,450
 JD 440 Crawler Loader (GM Diesel) - 1959?.....\$3,500
 JD 720 Diesel Standard - 1957.....\$3,900
 JD 720- Try-DE - 1958.....\$3,900
 JD Unstyled A - Nicely Redone - 1936.....\$3,900
 JD Unstyled B - Nicely Redone - 1936.....\$3,900
 JD Unstyled D - Nicely Redone - 1936.....\$3,900
 JD 720- WF- 3 Pt.- Pony - 1957.....\$4,250
 JD G- WF- 3 Pt. - 1952.....\$4,300
 JD 730- Standard - 1959.....\$4,700
 JD 60 High Crop- Poor - 1954?.....\$4,800
 JD 320 Utility - 1 Owner - 1957.....\$4,900
 JD 530- 3 Pt.- Nicely Redone - 1960\$4,900
 JD 730- LP- WF- 3 Pt.- Fenders - 1960.....\$4,900
 JD 80 - 1956 - High S/N.....\$5,200
 JD A High Crop- Poor - 1950?.....\$5,500
 JD 80 Diesel - Runs Good - 1955.....\$5,900
 JD 820 - Runs Good - 1957.....\$5,900
 JD 620 Standard- Nicely Redone - 1957.....\$5,900
 JD 830 - 1959 - Pony.....\$5,900
 JD 830 - Direct Ele. - 1959.....\$5,900
 JD 320S- Very Nice Original - 1957.....\$6,500
 JD 330S - Runs Good - 1959.....\$8,500
 JD 720 High Crop - 1957.....\$12,500
 JD 730 High Crop- Very Nice - 1958.....\$13,500
 Ferguson 35 "New" - Under 1 Hour - 1956.....\$24,500
 JD Unstyled G.....Coming In
 JD R.....Coming In
 JD D Unstyled.....Coming In
 JD B Unstyled.....Coming In

I Am Rebuilding My Collection, Will Buy Clean Or Odd John Deere's. Buy-Sell-Trade.

LLOYD WENGER
 251 S. Race St.
 Myerstown, Pa. 17067
 717-866-2130 Days
 717-866-7147 Evenings



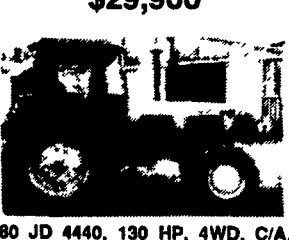
84 JD 4850, 183 HP, MFWD, C/A, 20.8Rx38, 3400 Hrs., 2 Rem., PS
\$41,500



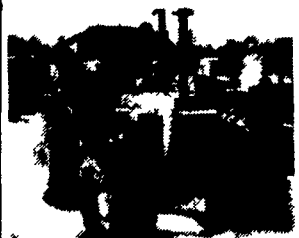
84 JD 4250, 120 HP, MFWD, C/A, 18.4Rx38, 3100 Hrs., 2 Rem., Quad.
\$29,900



84 JD 4450, 140 HP, MFWD, C/A, 20.8Rx38, 4300 Hrs., 3 Rem., PS
\$39,600



80 JD 4440, 130 HP, 4WD, C/A, 18.4Rx38, 3200 Hrs., 2 Rem., Quad.
\$21,500



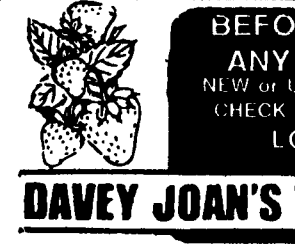
83/84 JD 4250, 120 HP, MFWD, C/A, 18.4x38, 3250 Hrs., 2 Rem., Quad.
\$33,200



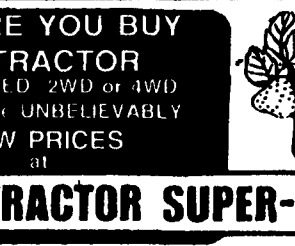
80 JD 2940 (3140), 85 HP, 4 WD, C/A, 16.9Rx38, 2950 Hrs., 2 Rem., Std. Tranny, w/Leone Loader
\$17,700

PARTS! PARTS! PARTS!
 The Majority Of Our Tractors Are 100% Parts Compatible From U.S. Sources. A Few Have Some Parts That Must Be Obtained From Canada But None Of Our Tractors Require Parts to Be Ordered From Europe.

81 JD 4858, 203 HP, MFWD, C/A, 30.5x32, 1100 Hrs., 2 Rem., SP.....\$69,500
 80 JD 4858, 203 HP, MFWD, C/A, 30.5x32, 1800 Hrs., 2 Rem., PS.....\$59,500
 81 JD 3258, 100 HP, MFWD, 4-Post, 18.4x38, 800 Hrs., 2 Rem., Fenders w/Creeper Gear, Hi-Lo.....\$32,900
 80 JD 8640, 229 HP, 4WD, C/A, 18.4Rx38 (Axle Duale), 900 Hrs., 2 Rem., Quad.....\$32,900
 84 JD 2018, 47 HP, 2WD, 1 Rem., 14.8x28, 8200 Hrs., Synchro.....\$4,700
 84 Case 3084, 110 HP, MFWD, C/A 18.4Rx38, 2400 Hrs., 2 Rem., PS.....\$22,900
 82 FD 8340, 108 HP, 4WD (SLE), C/A, 18.4Rx38, 500 Hrs., 2 Rem., Air Seat, Performance Monitor.....\$39,900
 80 FD 8830, 170 HP, 4 WD, C/A 20.8Rx38, 1800 Hrs., 2 Rem., PS.....\$37,900
 82 FD 7840, 90 HP, 4WD (SLE), C/A, 18.4Rx38, 400 Hrs., 2 Rem., PS.....\$35,900
 82 FD 7840, 90 HP, 4 WD, C/A, 18.4Rx38, 328 Hrs., 2 Rem., DP.....\$31,900
 89 FD 8216, 95 HP, 4 WD, C/A, 18.4Rx38, 1173 Hrs., 2 Rem.; DP.....\$25,500
 88 FD 8216, 95 HP, 4WD, Series 2 C/A, 18.4Rx34, 2100 Hrs., 2 Rem., DP.....\$21,900
 78 Long 810, 85 HP, 4 WD, Cab, 18.4x34, 3100 Hrs., 2 Rem., Hi-Lo.....\$7,900
 86 IH 858, 85 HP, 2WD, 18.4x30, 1 Rem, Gear w/TA.....\$5,500
 JCB830 Fork Lift 1980, 4 Cyl. Perkins Diesel, 4WD, 6000 Lb. 21' Mast, 847 Hrs.....\$27,500
 "Used" Hopper-Type Rockpicker, Good Condition.....\$4,750



76 JD 8430, 180 HP 4WD, Cab, 23.1x30 (Axle Duale), 5000 Hrs., 2 Rem. Quad., Eng./Tranny/Clutch Gone Thru \$15,900



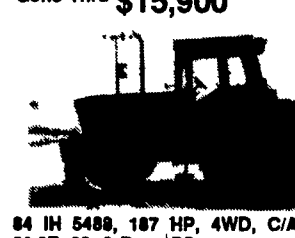
81 FD TW-30, 65 HP, 4 WD, C/A, 20.8Rx38, 2900 Hrs., 2 Rem., DP
\$23,100



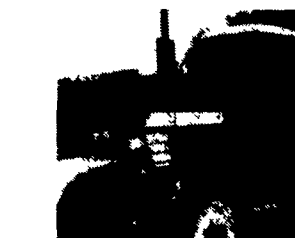
84 IH 5488, 187 HP, 4WD, C/A, 20.8Rx38, 2 Rem., PS
\$30,900



83 FD 6710, 72 HP, 4 WD, Cab, 16.9Rx34, 2 Rem, DP
\$19,900



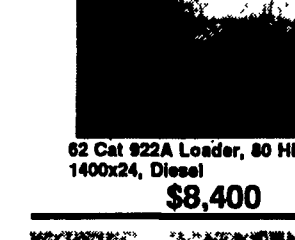
84 IH 5288, 180 HP, MFWD, 20.8Rx38, 3600 Hrs., 2 Remotes, PS
\$29,900



82 Cat 922A Loader, 80 HP, 4WD, 1400x24, Diesel
\$8,400



81 Case (David Brown) 1890, 80 HP Cab, 16.8Rx38, 3400 Hrs., 2 Rem, 12F/4R
\$11,400



200,000 BU. GRAIN COMPLEX:
 • 4 Ea. Grain Bins (50,000 Bu.)
 • 2 Ea. 80,000 Lb. Twin Cyl. Energy Platform Hoist (20 HP)
 • 2 Ea. 21'x39'x45' Hopper Tanks (9,000 Bu.)
 • 2 Ea. 8'x25' Tuber Augers w/Motors
 • 1-13'x7'x90' Bucket Elevator
 • 1-9'x5'x100' Bucket Elevator (3,000 Bu. Capacity)
 • 1-18'x84' U-Trough Auger
 • 2 - 975 MC Continuous Flow Dryers:
 20 HP Gas Furnaces w/25 HP Centrifugal Fans
FOR SPECIFICS CALL OR WRITE!
\$120,000

PLEASE VISIT US AT THE PA FARM SHOW - BOOTHS 548, 549, 566 & 567

WE CAN HELP! CALL ANYTIME! OPEN 24 HOURS A DAY, 7 DAYS A WEEK. FREE ESTIMATES. FREE ENGINEERING. FINANCING AVAILABLE. IMMEDIATE DELIVERY. NEW & USED EQUIPMENT.

TICO IRRIGATION SYSTEMS

NEW! TICO/FERBO

HOSE REEL IRRIGATOR
 available in many sizes to automatically irrigate from 20 to 200 acres. Quickly portable from area to area. Hose lengths from 400 to 1310 ft. Variable travel speed selection with automatic constant compensation provides uniform irrigation over entire length of pass.



ACRES IRR/WK.	ACRES IRR/RUN	HOSE O.D.	HOSE I.D.	IRRIGATED LENGTH	WIDTH	OPTIMUM GPM	MODEL	PRICE
20	2.5	1.9"	1.67"	700'	150'	50	50-180	\$5,250
40	4.0	2.4"	2.1"	725'	180'	100	63-250	\$11,900
55	5.0	2.9"	2.5"	1150'	200'	200	75-320	\$15,900
70	5.5	3.2"	2.8"	1100'	240'	250	82-300	\$15,900
90	7.5	3.5"	2.9"	1280'	260'	300	90-350	\$19,900
130	9.0	4.3"	3.7"	1350'	300'	400	110-350	\$24,900
120	10.0	4.3"	3.5"	1475'	300'	400	110-400	\$28,900
160	10.5	5.0"	4.1"	1350'	340'	550	125-350	\$29,900
160	13.0	5.0"	4.0"	1650'	340'	550	125-450	\$34,900

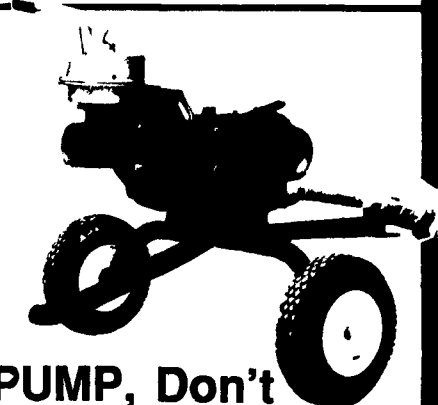
OFF-SEASON SPECIAL: 20% OFF Price Quoted Or Receive A FREE Pump With Any Reel Purchase (Except 50-180)

TICO MANUFACTURING, INC.

IRRIGATION HEADQUARTERS EASTERN UNITED STATES

RT. 13, WILLIAMSTOWN, NY 13493
 PHONE (315) 964-2214

IN VIRGINIA AREA CALL:
 LLOYD INGRAM (703) 369-4486



PUMP, Don't Haul Your MANURE!

WITH TICO IRRIGATION and WRIGHT-RAIN PUMPS
 ...you can pump and spread in one day what would take a week to haul, regardless of field conditions

We Can Design & Install All Types Of Irrigation Systems: Solid Set & Frost Control, Trickle, Giant Sprinkler, Wheel Row, Center Pivot, Hand Move, Liquid Manure (Or Waste Water Disposal). Virtually All Makes Of Used & New Pipe, Couplers, Fittings, Gaskets, Pumps & Sprinklers Are On-Hand & Ready For Immediate Delivery.

Over 30 Years Service To U.S. And Canadian Growers.