

CLEARANCE SALE!

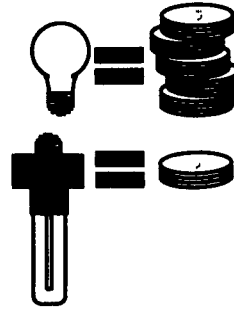
IN STOCK ITEMS ONLY

U-TUBE LAMPS & SUPPLIES

"... the biggest advantage of these lamps is the economic savings over the life of the bulb. Once the initial investment is paid back, which will be done in less than six months, the increased electrical economy makes such bulbs the most logical way to light..." Michael J. Darre -

PHD Animal Science,
University of Connecticut

Light Bulbs Cost 5 Times
More To Operate!



	Tube Wattage	5	7	9	13
	Ballast Wattage	2	2	2	2
	Total Wattage	7	9	11	15
	Initial Lumens	250	400	600	900
	Approx. Equivalent Incandescent	15-25W	25-40W	50-60W	60-75W
	Minimum Ambient Starting Temp	0°F	0°F	23°F	23°F
	Wattage Saved over Incandescent*	6-16W	14-31W	39-49W	45-60W
	Color Temperature	2700K	2700K	2700K	2700K
	Average Tube Life Hours	10,000	10,000	10,000	10,000

*Incandescent light output varies for a given wattage

POTTED U-TUBE (LAMP & POTTED BALLAST)

STK #	ITEM
LL1010	5 Watt U-Tube
LL1020	7 Watt U-Tube
LL1030	9 Watt U-Tube
LL1040	13 Watt U-Tube
LL1050	13 Watt Quad U-Tube

REPLACEMENT U-TUBE LAMP ...Fits all Compact Fluorescent Fixtures!

STK #	ITEM
LA1010	5 Watt U-Tube Lamp
LA1020	7 Watt U-Tube Lamp
LA1030	9 Watt U-Tube Lamp
LA1040	13 Watt U-Tube Lamp
LA1050	13 Watt Quad U-Tube Lamp

REPLACEMENT U-TUBE BALLAST

STK #	ITEM
LG1010	5 Watt U-Tube Ballast
LG1020	7 Watt U-Tube Ballast
LG1030	9 Watt U-Tube Ballast
LG1040	13 Watt U-Tube Ballast



OUR PRODUCT LINE



BOLTS

HEX HEAD CAP SCREWS
SLOTTED FLAT HEAD CAP SCREWS
SQUARE HEAD SET SCREWS
HEX TAP
SQUARE HEAD
CARRIAGE
LAG SCREWS
HANGER
ANCHOR
LOAD INDICATOR
PLOW
ELEVATOR
EYE-SHOULDER
U BOLTS

MASONRY FASTENERS

POWDERED ACTUATED
TOOL & SUPPLIES
ANCHOR BOLTS
DROP IN ANCHORS
RAWL STUDS
SELF DRILLING ANCHORS
EXPANSION BOLT SHIELDS
CAULKING ANCHORS
LAG SHIELDS
LEAD-PLASTIC ANCHORS
HAMMER WALL ANCHORS
HOLLOW WALL ANCHORS
MASONRY DRILLS
TOGGLES

SCREWS

MACHINE, RH, FH, PAN, BINDING, FILL
SLOTTED MACHINE
PHILLIPS MACHINE
SLOTTED INDENTED HEX
UNSLOTTED INDENTED HEX
SLOTTED WOOD
PHILLIPS WOOD
SLOTTED TAPPING
PHILLIPS TAPPING
HEX SOCKET CAP FLAT ROUND BOTTOM

SHOULDER
THUMB
SET SCREW CUP, FLAT, 1/2 DOG,
CONE, OVAL, SQ. HD. SET SCREWS
U DRIVE
TEKS HEX & PAN
NYLON LOCKING
SOCKET SCREW ASSORTMENTS
SEMS
DRILL
HOLLOW LOCK

QUALITY BROODER LAMPS

Complete With
Guard And
Hanger Two
Piece Porcelain
Replacement
Socket With
Screw
Terminals
BROODER w/
6' CORD &
WIRE GRILL

HEAT
LAMPS -
RED OR
WHITE
AVAILABLE

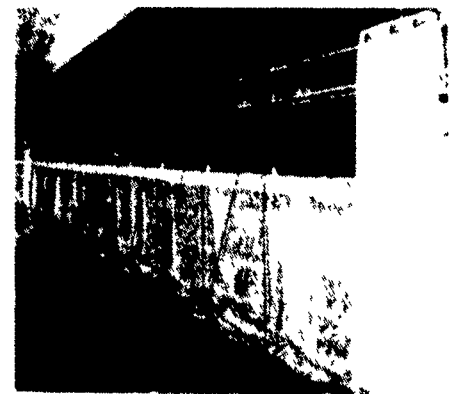


Nobody does it better

AGRICULTURAL
HEATERS
w/Hot Surface
Ignition
• Durability
• Safety
• Performance
• Quality



CURTAINS - Clear Or Insulated Hardware Winches



From Farrowing To Nursery COUNT ON KANE QUALITY

Durable, High Density Polyethylene —
No Rust! No Corrosion!

KANE Sure Start Creep Feeders

Divider groove holds feeder
in place between crates
Heavy duty double
wall design

KANE Baby Pig Creep Feeders

Features feed flow ad-
justment panel to save
on feed. Mounts on far-
rowing crate. Long-lasting
easy cleaning

KANE Milk Replacement Feeders

Model shown designed for
farrowing crate. Easy to
clean easy to fill easy-to-
see milk level. Larger unit
also available

KANE Baby Pig Heat Mats

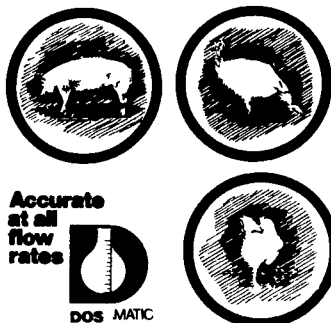
For all types of farrowing. Helps prevent
heat lamp piling. Economical and
safe. One year warranty



DOS MATIC PLUS

medicator

A simple, accurate,
reliable propor-
tional liquid
dispenser for inject-
ing metered
amounts of:
• Vitamins
• Medications
• Tranquilizers
• Mineral Salts
• Other Soluble
Additives
into your water line
WITHOUT
ELECTRICITY



PLUMBING SUPPLIES Galvanized & PVC



PVC
Ball Valve

WATER
FILTER
CARTRIDGES



Check Our
Warehouse
Prices

WE
SHIP
UPS

Swine & Poultry Systems Specialists

FARMER BOY AG.

410 E LINCOLN AVE

MYERSTOWN, PA 17067

PH. 717-866-7565

Full Line Of Parts
In Stock For Your
Poultry & Hog Needs

Hours:
M-F 7:00-5:00;
Sat. 7:30-11:30

