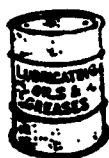


# Larry L. Adair

55 Gal. Drum  
Delivered Free  
80 Mi. Radius  
From York, PA



15W40 \$188.00  
SAE 30 \$183.75  
Tractor Hydraulic \$193.50  
Hydraulic Oil \$145.00

(717) 755-8638  
800-755-OILS (6457)  
Call Early Morning Or Late Evenings

**Ford 3000**  
w/730 F.E. Loader, Ready For Work  
**\$4,300**  
**410-833-9091**

## 1 FARM EQUIPMENT

SHIP PARTS ——— UPS DAILY!

### CHARLES S. SNYDER, INC.

ROUTE 3 ON ROUTE 443  
TAMAQUA, PA. 18252  
PHONE: 717-386-5945



MON. THRU FRI. 8:00 A.M. TO 5:00 P.M.;  
SAT. 8:00 A.M. TO 12:00  
EVENING HOURS BY APPOINTMENT

#### USED TRACTORS

TAG#	DESCRIPTION	HOURS
6587	Ford 3930 Demo (Excellent) 2WD	114
6984	Ford 8600 w/Cab	921
7437	Ford TW20 Cab 2 Remotes 18-4-38 Duals New	4029
7501	Ford 7710 4WD Cab 2 Remotes 16-9-38 14-9-24	2768
7517	Ford 9N 3 Speed, Nice	
7529	Ford 5000 Gear Diesel 8 Speed	2768
7688	Ford 2000 Gas w/Ind. Loader	2510
7738	Ford 7710 4WD Cab 3 Remotes & Load Monitor	2680
7761	Ford 4610	1441
7764	MF 101 4WD w/48" Mower	
7832	JD 2640 Diesel Wide Front End 1 Remote	4381

#### INDUSTRIAL & SKID LOADERS

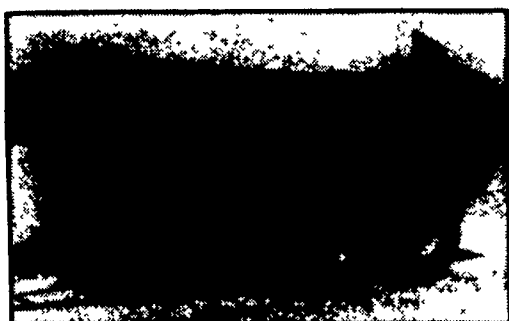
5941	Ford 555 TLB ROPS 2WD 4L	
7454	Ford 550 TLB Cab 2WD 4 Lever	1664
7728	TD6 Int. Dozer 7' Blade	
7757	Ford 655C TLB 4WD Cab	1263
7786	MF T035 TLB	
7791	Ford 655A TLB Cab Ext Hoe 4L IH 340 TLB	411.2
7843	Ford 555B TLB 4WD Ext Hoe 2L	2081
6862	710 Leaf Loader Left Side Pick Up	445
6870	710 Leaf Loader Left Side Pick Up	277
6873	710 Leaf Loader Left Side Pick Up	185
7151	NH L555 Skid Loader w/Bucket	2056
7367	NH L553 Skid Loader (No Buckets)	

#### COMBINES

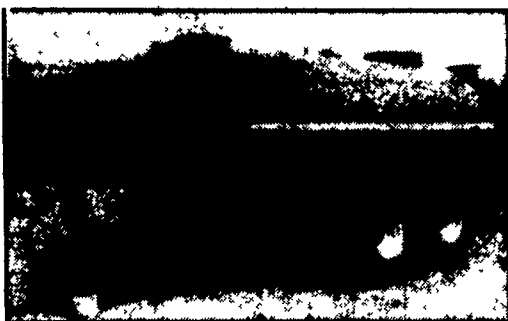
4696	Ford 15' Grain Head	
4831	Ford 13' Grain Head	
4832	Ford 4 Row Wide	
5676	NH 6 Row Narrow F/TR70	
5943	Ford Corn Head 6 Row Narrow	
6940	NH 15 Foot Grain M960	
6964	Ford 4 Row Narrow Corn Head	
6995	TR70 Gear New Short Block No Heads Diesel	2045
7523	NH TR70 Combine Hyd	1825
7631	NH 975 Combine w/2 Heads	
7632	NH 924 4 Row Corn Head Wide	
7741	NH 15' 960 Grain Head F/TR70	
7771	NH 4 Row Corn Head Wide	
7772	Ford 620 Combine Gas w/13' Head	
7776	NH 4 Row Wide Corn Head F/TR70	
7793	JD 6 Row Narrow F/NH TR86	

## MANURE TANK REBUILDING

REBUILD YOUR OLD TANK AT A FRACTION OF THE COST OF A NEW ONE



Before Rebuilding



After Rebuilding

### COMPLETELY REBUILT FROM TOP TO BOTTOM

- Tank Replaced
- Wheels & Chassis Sandblasted
- New Paint
- All Moving Parts Replaced

Complete Job For Under \$4,500<sup>00</sup>

We Also Build Truck Tankers



Full Line Of Rebuilt Tankers In Stock

\$2500<sup>00</sup> - \$6000<sup>00</sup>



## DILLER EQUIPMENT

Chambersburg, PA 17201 • (717) 369-2691 or 1-800-523-8002

## Leaman Tractor Parts

329 Brenneman Rd.  
Willow Street, PA 17584

(Lancaster Co.) 717-464-2874 Fax 717-464-4130  
(Turn Left on Brenneman Rd. from 222 S at Refton)

Inquiries  
Welcome



#### TORQUE AMPLIFIERS & CLUTCHES

- ★ New Wider Heavy Duty Super Sprag 1-1/32" Wide
- ★ 5 Yr. Warranty Against Sprag Failure
- ★ Price \$695.00

\* 5 yr. - 100% parts & labor against sprag  
\* 2 yr. - 100% parts & labor on remainder of unit  
Our standard heavy duty TA is still available at \$645.00 and carries a \*2 yr. - 100% parts & labor warranty.

\* Certain restrictions apply and there will be a maximum labor pay-out of \$450.00

We also have units & parts available to rebuild old style TA's, including ramp & carrier sets.

NEW price on ramps & carriers - \$200.00

#### COMBINE PARTS

Final drives for 6620 Hillside, 6600, JD 7720, 8820

We Also Have unloading augers, straw walkers and other various parts for JD and IH combines

- 1) MF 750 complete, but will sell any part

#### ENGINES

IH D-282 fits 560, 656, 706

IH D-282 from 1468, complete w/frame

Perkins 640 cu. in. V8, short block or long block

IH D-310 fits 706, 756, 716 combines  
Cummins KTIA (1155), one new block and 4 recon heads

Cummins 290 small cam, needs rebuilt

#### QUALITY USED PARTS

We specialize in IH tractors but we also have Case, AC, JD, Oliver, Massey and White tractors in our inventory.

##### Recent Additions To Parts:

IH 1066, 1086, 886, 560, 966, 1468, 1566

IH 2424, 460, 706, 806

IH 404 986, 884, 826, 856, 606, 2606

IH 1066, IH 340,

1981 Model 986

IH 815 Combine

JD 6620 Sidehill - MF 750

#### COLLECTORS

JD 8020 serial #1074, complete, running condition, where will you find another?

M Harris loader w/hyd. bucket, will fit 44 & 55

IH 350 high crop diesel, good shape, only 29 built

M Harris 55 gas, western special

1911 Minneapolis 20-45, 1 of 4 known to exist, older restoration

JD BHN Serial #46180, unstyled

JD BWH Serial #57881, unstyled

These tractors are very low production, very rare restorable tractors

\$34,000/Pair... Call For individual pricing

JD 430 vegetable, serial 3181016, good restorable condition

Some of these tractors are not at our location yet...Call to confirm

#### USED TRACTORS

IH 1568 cab, air, very clean  
IH 1066 red cab w/2090 hrs., fully equipped Heagey sprayer, model 647, 318 Chrysler engine, 4 WD, hydro, very low hrs. (Showing some weather)

1981 JD 860 3 Pt. PTO, 20x38 tires w/duals, new engine (fixer upper)

IH 4156 Cab w/Air, 18x34 Tires, Very Good Condition, PTO Available

Case 900 Diesel w/or w/out Steel Wheels Complete MFD Axle to fit JD 5020

PFA from JD 4430 (Hyd. Type)

AVAILABLE: JD 1050 MFD w/#75 Loader, 900 Hrs., Excel. Cond. \$10,200

JD 7520 Cab, Air, Duals, 3 Pt., PTO, Good Condition

IH 766 Gas, WF, 38" tires, 3 pt. very good condition

Farmall 450 Diesel, Runs Great, No TA

IH 1026 hydro, 18x38 tires, dual hydraulics & PTO, excellent condition

IH 1466 cab, air, 1976 model, very good condition

Several WF ends to fit IH & JD tractors \$350 to \$750

#### COMBINES AND HEADS

JD 4400 Gas, 2600 Hrs., 13' bean head

JD 213 grain head rigid pickup reel

JD 224 Black reel flex head

Final Drives For JD 8820 and 7720

Complete heavy duty dry axle including final drives for under 7720 combines

WILL VIRTUALLY ELIMINATE FINAL DRIVE FAILURE ON THESE MACHINES

#### HOW YOU CAN GET UP TO 15% MORE IN THE BAG WITH THE KELLY RYAN SELF-CLEANING CENTERLINE BAGGER



- Pack more punch from the center with less h.p. for tighter and more uniform bags of feed
- 8' & 9' diameters 2 wh standard (up to 12' by special order)
- 1/2" cables, 150' and 200'
- No hydraulics. Rust-free, chrome disc mechanical brake
- Tongue centered for close bag spacing and road travel
- Oil bath gearbox & drive chain
- #160 roller chain main rotor drive
- Gearbox 540 or 1000 rpm PTO
- Safety-first, V-belt driven conveyor for side feeding
- Design permits bagging nearly twice as fast as other models
- Adapts quickly for road transport
- Frontload dump hopper available
- 6' Rotor 3-4' above ground
- Many more desirable features

UP NORTH SILAGE BAGS 9 Mill

CUSTOM BAGGING - All items USA made.

AG PRODUCTS CO., INC.

717/328-3177



Dependable farm equipment since 1945