

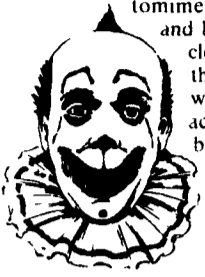


DECEMBER 14-20, 1992

HALCYON DAYS NOW

**PUT ON A HAPPY FACE**

Joseph Grimaldi was born in London on December 18, 1778, but his influence spread far beyond that time and place. He is best remembered as the original Joey the Clown — the "greatest clown in history." Prior to Joey, the Harlequin was the type of "clown" seen in theater pantomimes. Grimaldi displaced the Harlequin and began the tradition of the white-faced clown. His innovative humor influenced the clown's role in theater and paved the way for the circus clown of today. An accomplished singer, dancer, and acrobat, Joey the Clown left the world a legacy of laughter.



*A little nonsense now and then  
Is relished by the best of men.*

**TIP OF THE WEEK**

Lemons will yield almost twice as much juice if submerged in boiling water for a few minutes before squeezing.

**EARTHWISE**

When you're purchasing wrapping paper for your Christmas gifts look for the recycled mark. Gift wrap is now widely available in a variety of styles and colors on good-quality recycled paper. Try to avoid metallic wraps which usually cannot be recycled and are harder on the environment. After the holidays, send all that paper back to the recycling center for a new lease on life.

**MULLED CIDER**

- 1 quart cider
- 1/2 cup orange juice
- 2 tablespoons fresh lemon juice
- 1 tablespoon brown sugar
- 1 1/2 teaspoons cinnamon
- 1/2 teaspoon nutmeg
- 1/2 teaspoon ground cloves
- 1/2 teaspoon allspice
- 4 cinnamon sticks, optional

Combine all ingredients and heat to boiling. Place cinnamon sticks in serving mugs and fill with hot cider.

Makes 4 servings.



**The OLD FARMER'S WEATHER FORECAST**



**NORTHEAST:**  
Rainy and mild, then cloudy and cold, some flurries.

**SOUTHEAST:**  
Rainy and warm, clear Florida; then cold wave, hard frost west.

**MIDWEST:**  
Clearing and warm, snowstorm north, rain east, then clear and very cold.

**NORTHWEST:**  
Snowstorm and cold wave; clearing in the mountains then snow, freezing rain and snow coast.

**SOUTHWEST:**  
Cold and rainy, clear California, snow mountains, clearing, very cold then milder, showers, snow mountains.

**Eighty-Four Livestock**

Eighty-Four, Pa.  
Monday, Dec. 7, 1992  
Report Supplied by Auction

**CATTLE** 324. STEERS, SELECT 65.00-70.50; STANDARD 50.00-64.00; UTILITY 50.00 AND DOWN.  
HEIFERS: STANDARD 50.00-63.00; UTILITIES 45.00-54.00.  
**COWS:** UTILITY AND COMMERCIAL 48.00-57.50; CUTTERS, BONERS AND UTILITIES 44.00-47.50; CANNERS AND LOW CUTTERS 38.00-43.50; SHELLS 37.50 AND DOWN.  
**BULLS:** GRADE #1 58.00-65.00; #2 47.50-57.00.  
**FEEDER STEERS:** 200-300 LBS. 65.00-82.50; 301-500 LBS. 60.00-85.00; 501-800 LBS. 54.00-79.00.  
**HEIFERS:** 200-300 LBS. 57.50-86.00; 301-500 LBS. 52.00-75.00; 501-800 LBS. 50.00-64.00.  
**BULLS:** 200-300 LBS. 70.00-90.00; 301-500 LBS. 51.00-78.00; 501-800 LBS. 48.00-74.00.  
**CALVES:** 180 HEAD. VEALERS CHOICE 90.00-111.00; GOOD 78.00-88.00; STANDARD AND GOOD 57.50-75.00; UTILITIES 55.00 AND DOWN.  
**FARM CALVES, HOLSTEIN BULLS** #1 120.00-152.50; #2 85.00-122.50; BEEF BULLS 78.00-137.50.  
**HOLSTEIN HEIFERS:** 75.00-150.00.  
**BEEF X HEIFERS** 68.00-135.00.  
**HOGS:** 108 HEAD. #1&2 220-260 LBS. 41.40-43.50; #1&3 200-220 LBS. 40.75-42.00; #2&3 100-200 LBS. 32.00-36.00.  
**SOWS:** UNDER 500 LBS. 25.00-35.50; OVER 500 LBS. 32.50-34.00.  
**BOARS:** 29.00-32.00.  
**FEEDER PIGS:** 69 HEAD. #1&3 30-50 LBS. 16.50-27.00; #1&3 50-60 LBS. 24.50-32.00; #1&3 20-30 LBS. 16.50-19.00; #1&3 68 LBS. 28.00; UTILITIES 15.00 AND DOWN, ALL BY THE HEAD.  
**SHEEP AND LAMBS:** 208 HEAD. CHOICE 76-100 LBS. 70.00-73.00; 101-125 LBS. 64.00-70.50; GOOD 57 LBS. AT 68.50; FEEDER LAMBS GOOD AND CHOICE 50-75 LBS. 70.00-80.00; 50-75 LBS. 65.00-68.50 GOOD; UTILITIES 65.00 AND DOWN; EWES 27.00-32.50.  
**GOATS:** 28 HEAD. LARGE

45.00-53.00; MEDIUM 37.00-42.00; SMALL 14.00-25.00, BY THE HEAD.  
1 HORSE BROUGHT 54.50 PER HUNDREDWEIGHT.

**Aberdeen Sales Company, Inc.**

Complete Auction & Appraisal Service  
Churchville, Md.  
Wednesday, Dec. 9, 1992

**SLAUGHTER STEERS:** MARKET 1.00 LOWER. CHOICE 2-4 1100-1400 LBS. 74.00-76.50; SELECT & LOW CHOICE 1000-1500 LBS. 69.00-72.50; HOL. STEERS HI CHOICE & PRIME 1250-1400 LBS. 67.00-69.00; CHOICE 1200-1500 LBS. 65.00-67.00; SELECT, ALL WEIGHTS 58.00-62.00.  
**SLAUGHTER HEIFERS:** MARKET 1.00 LOWER. CHOICE & PRIME 950-1300 LBS. 72.00-75.00; SELECT ALL WEIGHTS 900-1400 LBS. 64.00-69.00.  
**COWS:** MARKET 2.00 LOWER. BRK. UT. & COMM. 2-4 BULK 46.00-49.00; HI DRESSING 49.00-52.00; CUTTER & BON. UT. 45.00-47.50; HI DRESSING 48.00-51.00; CANNER & CUTTERS 42.00-45.00; LOW DRESSING 42.00-DOWN.  
**BULLS:** MARKET 2.00 LOWER. ALL WEIGHTS 1100-1900 LBS. 59.00-63.00.  
**VEAL CALVES:** MARKET 3.00 LOWER. CHOICE AND PRIME 200-400 LBS. 65.00-82.00; HI GOOD AND LOW CHICE ALL WEIGHTS 60.00-77.00.  
**FARM CALVES:** MARKET STEADY.  
**HOL. BULLS** 100-125 LBS. 135.00-150.00; HOL. BULLS 85-95 LBS. 95.00-135.00; HOL. HEIFER CALVES 100-120 LBS. 130.00-145.00; SMALL FRAME 70-105 LBS. 75.00-95.00; SLAUGHTER CALVES ALL WEIGHTS 56.00-68.00.  
**FEEDER CATTLE:** MARKET 3.00 LOWER. BULLS & STEERS 400-900 LBS. 58.00-77.00; HEIFERS 300-700 LBS. 56.00-72.00.  
**LAMBS:** MARKET 8.00 HIGHER. CHOICE & PRIME 90-110 LBS. 63.00-72.00; LIGHTER LAMBS 70.00-95.00; EWES - HEAVY 22.00-27.00; EWES - LIGHT 29.00-40.00.  
**GOATS:** MARKET STEADY. SMALL 15.00-30.00; MEDIUM 30.00-45.00; LARGE 50.00-90.00.  
**HOGS:** MARKET 1.00 LOWER.

**Frederick Livestock Auction**

Frederick, Md.  
Dec. 7, 1992  
Report Supplied by Auction

**SLAUGHTER COWS:** 95 HEAD, 1.50 LOWER. UTILITY 45.00-48.75; HIGH DRESSING 49.00-50.00; CANNERS 41.00-45.00; SHELLY 41.00 DOWN.  
**BULLS:** YG#1 1875 LBS. AT 59.25; YG#2 LOW DRESSING 52.00-53.00.  
**FED STEERS:** NO SELECT OR CHOICE; FEW STANDARD HOLSTEINS 1100 LBS. TO 56.50.  
**HEIFERS:** STANDARD AND UTILITY 49.00-54.00.  
**VEAL CALVES:** CHOICE 135-200 LBS. TO 89.00; GOOD 70.00-80.00; CULLS 85-110 LBS. 45.00-55.00; 50-80 LBS. 42.00-50.00; WEAK/ROUGH 40.00 DOWN.  
**FARM CALVES:** HOLSTEIN BULLS TO 150.00; BULK #1 90-120 LBS. 130.00-142.00; #2 80-95 LBS. 80.00-125.00; HOLSTEIN HEIFERS FEW 100-125 LBS. 140.00-170.00; 80-95 LBS. 90.00-125.00.  
**BUTCHER HOGS:** 65 HEAD, 1.00 HIGHER. US#1&2 240-250 LBS. 40.00-41.00; US#1&3 215-260 LBS. 38.00-39.75.  
**SOWS:** NONE.  
**BOARS:** NONE.  
**STOCK CATTLE:** STEERS, NONE.  
**HEIFERS:** 300-500 LBS. 58.00-68.00; 500-700 LBS. 56.00-63.00; 700-850 LBS. 51.00-58.00.  
**BULLS:** 300-500 LBS. 62.00-70.00; FEW HOLSTEINS 63.00-71.50; BEEF TYPE 950-1050 LBS. 53.00-55.00; 1 HOLSTEIN BRED COW AT 735.00.  
**SHEEP AND LAMBS:** NONE OFFERED.  
**GOATS:** MEDIUM TO 61.00.  
**PIGS AND SHOATS:** BY THE HEAD, 30-40 LBS. 12.00-20.00; 50-65 LBS. 26.00-27.00; BY THE POUND, 150-200 LBS. 33.00-35.00.  
**NEXT MON., DEC. 14, SIRE POWER WILL BE HERE TO BUY STRONG OPEN COWS FOR THEIR BREEDING SCHOOL.**

**Coming...**

**Binkley & Hurst Bros., Inc. Annual**

**DISCOUNT CASH & CARRY DAYS**

Starting Monday, December 21st, 1992  
Thru Saturday, January 9th, 1993

**BIG SAVINGS ON PARTS AND OTHER MACHINERY SPECIALS**

LOOK FOR FULL DETAILS IN THE DEC. 19th ISSUE OF LANCASTER FARMING

**Purina Mills**

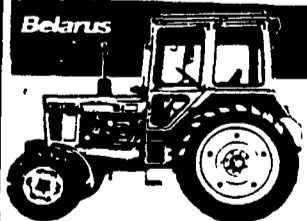


Are You A Current Pork Producer  
OR  
A Future Pork Producer  
And  
Want Your Income To Reflect  
Your Performance  
THEN: Ask About Our Alternative  
"Hog Contracts"  
1-800-873-5300



Leaner pork for leaner people.

**Belarus**  
Sensible Down-To-Earth Tractors

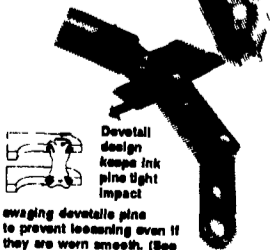


- Belarus Sales, Parts And Service
- Tractors Available From 31 HP to 100 HP
- SPECIAL:** 525- 4 WD, 65 HP, PTO, 3 Pt. Hitch, Remote, Hyd. w/Power Steering
- CASH PRICE - \$12,755**

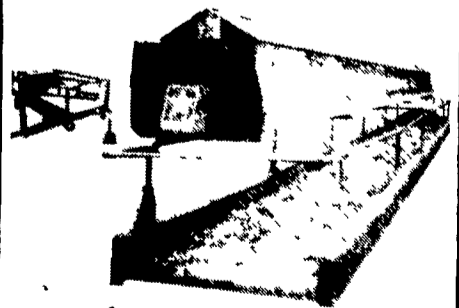
Now That The Silos Are Full, It's Time To Think About Barn Cleaners And Feed Conveyors...Call And Check Us Out!

**BETTER CHAIN, BETTER PRICE.**

10 Year Warranty



Devetail design keeps link pins tight impact swaging devetail pins to prevent loosening even if they are worn smooth. (See diagram) Reversible chain lasts longer.



**NEW! Feed-Trak™ High-Capacity Feeder**

**ROVENDALE AG & BARN EQUIP.**

717-538-9564  
or 717-742-4226

Watsonstown, PA 17777  
Exit 31, I-80 to I-180 Watsonstown Exit  
Hours: Mon.-Fri. 8 to 5; Sat. 8 to 12

