



Hog Markets

New Holland Feeder Pigs

New Holland, PA
Wed., Dec. 10, 1992

Report Supplied by Auction

TODAY: 778 HEAD
LAST WEDNESDAY: 522 HEAD
LAST YEAR: 1436 HEAD
TREND: COMPARED TO LAST WEDNESDAY, FEEDER PIGS 2.00-5.00 HIGHER; WEIGHTS UNDER 40 LBS. SOLD MAINLY FOR SLAUGHTER. ALL PIGS WEIGHED ON ARRIVAL AND SOLD BY THE HUNDRED WEIGHT.
US #1&2: 36 HEAD 39 LBS. 92.00-96.00; 240 HEAD 40-49 LBS. 82.00-90.00; 122 HEAD 50-55 LBS. 84.00-90.00; 25 HEAD 54 LBS. 96.00; 6 HEAD 60 LBS. 76.00; 11 HEAD 72 LBS. 64.00.
US #2: 26 HEAD 43-49 LBS. 78.00-80.00; 27 HEAD 50-56 LBS. 72.00-81.00; 17 HEAD 76-80 LBS. 66.00.
SLAUGHTER: 65 HEAD 19-31 LBS. 116.00-154.00; 120 HEAD 16-40 LBS. 100.00-108.00.

New Holland Hog Auction

Lancaster, PA
December 7, 1992

HOG RECEIPTS
TODAY 1156
LAST MONDAY 846
LAST YEAR 1292
TREND: Compared to last Monday barrows and gilts firm to 50 higher.
BARROWS AND GILTS: US 1-2 210-245 lb 42.00-43.00.
US 1 215-235 lb 43.25-44.00, 15 head 44.50-45.00.
US 1-3 210-250 lb 40.00-41.50.
US 2-3 240-260 lb 38.50-39.50.
260-270 lb 38.00-38.50.

Lancaster Hogs

Lancaster Stockyards
Sat., Dec. 5, 1992

Report supplied by auction

500 HEAD.
US 1 215-245 LBS. 43.00-44.00.
US 1-2 215-245 LBS. 41.50-42.50.
US 1-3 215-245 LBS. 40.00-41.00.
US 2-4 215-255 LBS. 39.00-40.00.
195-210 LBS. 38.00-39.00; 180-195 LBS. 36.00-38.00; 120-180 LBS. 35.00-37.00; 80-120 LBS. 30.00-35.00; 50-80 LBS. 30.00-35.00; 30-50 LBS. 25.00-35.00.
SOWS: GOOD SOWS 31.00-33.00; MEDIUMS 28.50-31.00; THINS 25.00-29.00.
BOARS: HEAVY BOARS 28.50-30.00; LIGHT BOARS 32.00-34.00.

State Graded Feeder Pig Sale

at Westminster
Livestock Auction
Dec. 4, 1992

499 PIGS, 2 WEEKS AGO 747.
PRICES 2.00-10.00 HIGHER ON 35-50 LB. PIGS. HEAVYWEIGHTS SOLD STEADY.
GRADE 1: 44 HEAD 38-40 LBS. 70.00-75.00, 60 HEAD 60-69 LBS. 57.00-61.00, 116 HEAD 69-74 LBS. 53.00-57.00.
GRADE 1 & 2: 53 HEAD, 44-47 LBS. 68.00-72.00, 58 HEAD 48-66 LBS. 55.00-60.00; 121 HEAD 74-76 LBS. 52.00-53.50.
GRADE 2: 10 HEAD 45 LBS. 68.00.
NEXT STATE GRADED SALE DEC. 18, 1:30 P.M. NO SALE JAN. 1, 1993.

Indiana Hogs

Louisville, Kentucky
Thursday, December 10, 1992

INDIANA DIRECT HOGS FLASH BARROWS AND GILTS: .50-1.00 HIGHER. DEMAND MODERATE TO GOOD.
COUNTRY: PLANTS: US 1-2 230-260 LBS. 42.50-44.00 43.00-44.00
US 1-3 230-260 LBS. 40.00-42.50
210-230 LBS. 39.00-41.50
SOWS: UNDER 500 LBS. FIRM; OVER 500 LBS. FIRM TO 1.00 HIGHER.
US 1-3 300-500 LBS. 28.00-31.00
500-650 LBS. 30.00-32.00, FEW TO 33.00.
PRELIMINARY ESTIMATE: *26,000
*RECEIPTS HAVE CHANGED DUE TO CHANGE IN REPORTING BASE.

St. Louis Cattle, Hogs

Thursday, December 10, 1992

OPENING MID-SESSION WEEKLY CLOSE
CATTLE & CALVES: 400 (0 SLTR, 400 FDRS)
RECEIPTS CONSISTS OF FEEDER CATTLE AND SLAUGHTER COWS AND BULLS FOR THE REGULAR THURSDAY AUCTION.
SLAUGHTER CLASSES: COWS BUTT, UTIL, COMM BULK SALES HINDRESS % LO-DRESS % BREAKING 2-4 BONEING 1-2 LOW TO AVG. CUTTER
RECEIPTS THIS WEEK 1,200 WEEK AGO 1,700; YEAR AGO 1,900
COMPARED WITH LAST WEEK'S TERMINAL MARKET CLOSE, SLAUGHTER STEERS MOSTLY 50 HIGHER EXCEPT HOLSTEIN STEERS STEADY. SLAUGHTER HEIFERS MOSTLY 1.00 HIGHER.
COWS 4.00-5.00 LOWER. BULLS 3.00-4.00 LOWER.
SLAUGHTER SUPPLY MAINLY CHOICE
SLAUGHTER STEERS AND HEIFERS WITH AROUND 15% COWS AND A VERY LIGHT SUPPLY OF HOLSTEIN STEERS.



Hay & Grain Markets

Kirkwood Hay Auction

Kirkwood, Pa.

Tuesday, Dec. 8, 1992

Report Supplied by Auction
30 LOADS OF HAY.
MIXED HAY: 1ST CUTTING 138.00-139.00, 2ND CUTTING 137.00-140.00.
TIMOTHY: 155.00-170.00.
ALFALFA: 1ST CUTTING 109.00-121.00; 2ND CUTTING 118.00-132.00; 3RD CUTTING 116.00-156.00.
CLOVER: 115.00-126.00.
GRASS: 131.00-150.00.
WHEAT STRAW: 81.00-101.00.
BARLEY STRAW: 92.00.
OAT STRAW: 75.00.
RYE STRAW: 83.00.
EAR CORN: 82.00.
TIME 11 A.M.

Leinbach's Hay

Shippensburg, PA
Dec. 5 and 8

Report Supplied by Auction
ALFALFA: GOOD 115.00-150.00, MEDIUM QUALITY 80.00-160.00.
MIXED HAY: 65.00-140.00.
CLOVER: 80.00.
TIMOTHY: 65.00-97.00.
BROME GRASS: 72.00-97.00.
ORCHARD GRASS: 62.00-80.00.
STRAW: 50.00-75.00, 1 LOAD AT 29.00.
EAR CORN: 43.00-80.00.
OATS: 1.75 BU.
WOOD: 25.00-42.50 PICK-UP LOAD.
TOTAL LOADS: 59.00.

Westminster Hay

Westminster, Md.
Tuesday, Dec. 8, 1992

Report Supplied by Auction
TOTAL LOADS: 105.
ALFALFA: 80.00-120.00, 21.00 LARGE ROUND.
TIMOTHY: 62.50, 1.30-3.00 BALE, 13.00-31.00 LARGE ROUND.
MIXED HAY: 1.15-2.30 BALE.
GRASS: 72.50, 1.15-2.30 BALE.
CLOVER: 1.60 BALE.
OATS HAY: 55.00.
STRAW: 54.00-59.00, 1.00-1.70 BALE.
OATS: 3.20 BU.
WOOD: 47.50-85.00 CORD.
NEXT STATE GRADED FEEDER PIG SALE FRI., DEC. 18, 1:30 P.M.

Green Dragon Hay

Ephrata, Pa.

Friday, Dec. 4, 1992

Report Supplied by Auction
TOTAL LOADS: 86.
MIXED HAY: 55.00-170.00.
ALFALFA: 46.00-145.00.
TIMOTHY: 112.00-147.00.
GRASS: 100.00-135.00.
STRAW: 73.00-117.00.
EAR CORN: 52.00-78.00.
FIREWOOD: 55.00-62.00 LOAD.

Regional Hay

December 7, 1992
Eastern, Pa.

HAY & STRAW MARKET FOR EASTERN PA. - (ALL HAY NO. 2 AND BETTER, PRICES PAID BY DEALERS AT THE FARM & PER TON). HAY AND STRAW STEADY.
ALFALFA 90.00-120.00; MIXED HAY 70.00-120.00; TIMOTHY HAY 70.00-110.00, FEW REPORTED 135.00; STRAW 40.00-85.00; MULCH 20.00-40.00
SUMMARY OF LANCASTER CO. HAY AUCTIONS FOR WEEK ENDING 12/04/92. PRICES PER TON: LOADS: 99 HAY, 10 STRAW & 7 EAR CORN.
ALFALFA 80.00-131.00; MIXED HAY 66.00-125.00; TIMOTHY HAY 86.00-124.00; STRAW 45.00-95.00; EAR CORN 42.00-80.00.

SUMMARY OF CENTRAL PA. HAY AUCTIONS FOR WEEK ENDING 12/04/92. PRICES PER TON: LOADS: 99 HAY, 10 STRAW & 7 EAR CORN.
ALFALFA 80.00-131.00; MIXED HAY 66.00-125.00; TIMOTHY HAY 86.00-124.00; STRAW 45.00-95.00; EAR CORN 42.00-80.00.

Keister's Hay

Middleburg, PA
Dec. 8, 1992

Report supplied by auction
27 LOADS OF HAY.
MIXED HAY: 60.00-125.00.
ALFALFA: 95.00-132.50.
TIMOTHY: 125.00-130.00.
STRAW: 7 LOADS, 55.00-85.00.
EAR CORN: 9 LOADS, OLD 75.00-85.00, NEW 50.00-60.00.
OATS: 2 LOADS, 1.80 AND 2.20 BU.
WOOD: 7 LOADS, 25.00-47.50.

Greencastle Livestock Market

Hay & Straw
Dec. 3 and 7, 1992

35 LOADS.
ALFALFA: GOOD 85.00-109.00, FAIR 76.00-90.00.
ALFALFA MIXED: 89.00-106.00.
TIMOTHY HAY: 82.00-92.00.
MIXED HAY: 70.00-89.00.
BROME GRASS: 77.00-91.00.
WHEAT STRAW: 68.00-72.00

Diffenbach Auction Center

New Holland, Pa.

Monday, December 7, 1992

Report Supplied by Auction
TOTAL LOADS: 138.
ALFALFA: 67.00-195.00.
MIXED HAY: 86.00-197.00.
TIMOTHY: 85.00-165.00.
ORCHARD GRASS: 132.00-138.00
STRAW: 65.00-117.00.
EAR CORN: 50.00-79.00.
OATS: 2.35 BU.
This sale was formerly held at the New Holland Sales Stables. It is now held at Diffenbach's New Holland Auction Center Ltd., 100 W. Jackson St., New Holland, across from the prior sale location. Auction time is 10:00 a.m. Monday.

North Jersey Market

Hackettstown, N.J.
Tuesday, Dec. 8, 1992

Hay—Straw & Grain Report
ALFALFA: 1.90 BALE.
MIXED HAY: 1.60-2.30 BALE
TIMOTHY HAY: 1.90 BALE.
GRASS HAY: 1.90-2.30 BALE
WHEAT STRAW: 1.20 BALE.
SHELLED CORN: 3.50 BAG
OATS: 6.00-6.25 BAG
TOTAL: 22 LOTS

Good's Hay

Leola, Pa.
Wed., Dec. 9, 1992

Report Supplied by Auction
TOTAL LOADS: 85.
MIXED HAY: 88.00-152.00.
ALFALFA: 78.00-119.00.
STRAW: 64.00-100.00.
TIMOTHY: 100.00-160.00.
CORN: 55.00-85.00.
GRASS: 101.00-115.00.
BEAN STUBBLES: 44.00.
FIREWOOD: 64.00 LOAD.

Dewart Hay

Dewart, PA.
Monday, Dec. 7, 1992

Report Supplied by Auction
19 LOADS OF HAY, 35.00-132.00.
STRAW: 5 LOADS, 67.00-76.00.
WOOD: 10 LOADS, 29.00-80.00.
CORN: 3 LOADS, 71.00-85.00.

Vintage Hay

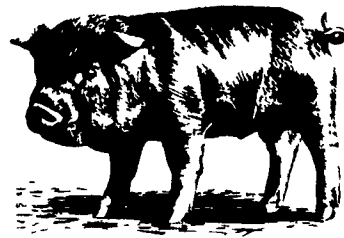
Paradise, PA
Thurs., Dec. 10, 1992

Report Supplied by Auction
4 LOADS.
MIXED HAY: 57.50-128.00.
WHEAT STRAW: 80.00-83.00.

Belleville Hay

Wednesday, Dec. 9
Belleville, PA

Report Supplied by Auction
32 LOADS OF HAY.
ALFALFA: 85.00-145.00.
MIXED HAY: 60.00-130.00.
STRAW: 7 LOADS, 75.00-90.00.
OATS: 1.70 BU



Walter M. Dunlap and Sons offers all cattle feeders two marketing days - Give us a call for advice and marketing conditions.

MONDAYS OR WEDNESDAYS

Consign With Us - For The Marketing Edge

Consign Your Beef Cows
Mondays and Wednesdays
No Waiting to Unload - Good Weight Conditions

Next Feeder Cattle Sale
Friday, Dec. 18 - 11:00 A.M.

HOLIDAY SCHEDULE
Closed Christmas Day Dec. 25 & Sat. Dec. 26
New Year's Day Jan. 1 & Sat. Jan. 2

Walter M. Dunlap and Sons

Lancaster Stockyards

Tel. (717) 397-5136

An Old Line Commission Firm Keeping
Abreast With The Times



KIRKWOOD
HAY AUCTION
Hay, Straw and
Grain Auction
EVERY TUESDAY

11:00
Located Rt. 472 5 miles
south of Quarryville or 6
miles north of Oxford
corner of Rt. 472 and Noble
Road.

Lloyd H. Kreider,
Auctioneer
AU-000513L
No out of state checks

In This Issue

Four Sections

COLUMNS

Now is the Time.....A10
Foraging Around.....A30
Taking Time.....B 4
On Being A Farm Wife.....B 5
Have You Heard.....B 9
Ida's Notebook.....B 7
E-I-E-I-O.....C 2
Poultry Pointers.....C 3
Beef Briefs.....C 8
Farm Management.....C15

DEPARTMENTS

Editorial.....A10
Farm Calendar.....A10
Mailbox Markets.....B22
Sale Reports.....B28
Public Auction Register.....B29
Business News.....C 6
Classified Ads.....C16, D 6

FEATURES

Century Farm.....B14
Grange Cookbook.....B15

HOME AND YOUTH

Homestead Notes.....B 2
Home On The Range.....B 6
Cook's Question Corner.....B 8
Kid's Korner.....B10
Farm Women Societies.....B11,12
4-H Happenings.....B20

DAIRY

Heilinger Brown Swiss.....A30
Mase Mixed Breed.....A32
Ardrossan Farm.....A33
Spruce Row Jersey.....A34
DHIA Focus.....C12