

Lancaster Co. Livestock Market Auctions

Lancaster Livestock Auction

LANCASTER, PA
DECEMBER 8, 1992
Cattle Calves Hogs Sheep Goats
MONDAY'S AUCTION
894 115 221 1013 723
LAST MONDAY'S AUCTION
684 113 133 577 287
LAST YEAR'S AUCTION
930 83 245 1212 184

CATTLE: Slaughter steers 1.00-1.50 lower; slaughter heifers steady to weak; cows weak to 50 lower; bullocks fully steady; bulls firm to 1.00 higher. Supply included 48% slaughter steers, 14% slaughter heifers, 28% cows, with the balance bulls.

SLAUGHTER STEERS: Choice 2-3 few 4 1100-1400 lb 74.50-76.50; few Choice 2 1150-1300 lb 77.00-78.00; few lots Choice 3-4 1250-1450 lb 73.75-74.50; Select and low Choice 2-3 1075-1350 lb 72.75-74.50, few 74.50-75.00, around 30 head 1050-1150 lb returned to feedlot at 72.25-74.50.

HOLSTEINS: Choice 2-3 1125-1400 lb 66.00-67.00; Select 1-3 1050-1525 lb 61.50-63.75; few Standard 1100-1450 lb 57.00-59.50.

SLAUGHTER HEIFERS: Choice 2-3 950-1200 lb 71.50-75.10; couple Choice 2 1125-1250 lb 75.50-76.50; Select 2-3 950-1200 lb 66.75-71.00.

COWS: LO DRESSING BULK HI DRESSING Breaking Utility & Commercial 2-3 45.50-49.00 49.00-50.50 Commercial 3-4 43.50-46.50 Cutter & Boning Utility 1-2 44.00-45.00 45.00-49.00 49.00-50.50 Canner and low Cutter 40.00-42.00 42.00-45.00

BULLOCKS: Choice 2-3 1050-1350 lb 66.50-68.50, couple 71.00-72.25; Select 1-3 1100-1350 lb 62.25-66.00

BULLS: Yield grade 1 1200-2350 lb 61.00-66.00, few 66.00-68.00, with five head 69.75-72.50; Yield grade 2 1200-1600 lb 56.00-61.00.

CALVES: Vealers scarce, slaughter calves steady. Demand good for Holstein bulls to return to farm.

VEALERS: Few high Good and low Choice 80-110 lb 45.00-55.00.

SLAUGHTER CALVES: Good and Choice 275-450 lb 60.00-85.00.

RETURNED TO FARM: Bulk 90-125 lb Holstein bulls 120.00-150.00.

HOGS: Barrows and gilts firm to 50 higher; sows steady, instances 1.00 higher.

BARROWS AND GILTS: US 1-2 210-250 lb 42.00-42.50. US 1-3 210-255 lb 41.00-42.00.

SOWS US 1-3 300-625 lb 31.00-33.00, Few 500-625 lb 33.00-34.00.

BOARS: All weights 29.00-30.50

SHEEP: Woolled lambs 5.00-8.00 lower; slaughter ewes steady to weak. Supply included 75% woolled lambs, 5% New Crop lambs, with the balance slaughter ewes

WOOLED LAMBS: Choice 2-3 50-110 lb 80.00-90.00; few 50-75 lb 90.00-100.00; few 110-125 lb 75.00-85.00.

NEW CROP LAMBS: Few Choice

Vintage Livestock Auction

Paradise, Pa
Tuesday, December 8, 1992
Cattle Calves Sheep Goats
TODAY
685 894 3 0
LAST TUESDAY
655 1053 5 0
LAST YEAR
962 1065 6 0

CATTLE...USDA... Supply included 27% slaughter steers and 63% cows Compared with Monday's market: Small supply sl. steers steady, instances .50 higher on few Choice 2; sl. heifers not tested, bulls steady to weak; cows weak to 50 lower. SL. STEERS: Choice 2-3 few 4 1100/1450 lbs. 74.35-76.50, few 76.50-77.25, Choice 2 1100/1325 lbs. 77.25-78.75, few Choice 3-4 1300/1450 lbs. 73.00-74.25, Select and Low Choice 2-3 1050/1450 lbs. 71.75-74.75, Select 2-3 1000/1300 lbs. 67.00-71.00. COWS: Breaking Utility and Commercial 2-3 bulk 46.50-48.75, high dressing 48.75-50.00, Commercial 3-4 bulk 40.00-45.00, Cutter and Boning Utility 1-2 low dressing 44.25-45.00, bulk 45.00-48.50, high dressing 48.50-51.00, Canner & Low Cutter low dressing 40.00-41.50, bulk 41.50-44.75

BULLS: Yield Grade 1 1435/1700 lbs 65.50-66.75, Yield Grade 2 1300/1900 lbs 56.00-59.75 CALVES.. Vealers steady Supply included 747 in graded sale of which 92% sold to return to farm VEALERS: few High Good and Low Choice 155/350 lbs 70.00-82.00, 80/110 lbs. 42.00-50.00, Standard and Low Good 60/85 lbs. 20.00-42.00. RETURNED TO FARM: 40 head Holstein bulls 120/125 lbs. 130.00-133.00, 215 head 95/115 lbs 140.00-155.00, 45 head 100/105 lbs 160.00, and 100 head 80/90 lbs. 121.00-128.00, 20 head small frame 110/120 lbs. 115.00, 40 head 100/105 lbs. 121.00-122.00, 50 head 90/95 lbs 106.00-109.00 and 25 head 80/85 lbs. 100.00. 25 head Holstein heifers 100/120 lbs 175.00-182.00, 50 head 80/95 lbs 134.00-142.00 and 15 head 70/75 lbs. 90.00, 10 head small frame 90/105 lbs. 110.00-115.00, 10 head 80/85 lbs 77.00 and 10 head 65/75 lbs 61.00.

SHEEP...No market test.

GOATS...No market test.

30-55 lb 110.00-137.00, with about 10 head 35-40 lb 179.00-190.00.

SLAUGHTER EWES: Utility and Good 28.00-42.00; Yearlings and two-year olds 40.00-60.00.

GOATS: All goats sold by the head Large Billies 75.00-100.00, few 100.00-140.00; Large Nannies 55.00-75.00. Medium 50.00-60.00; few Thin 45.00-50.00. Small, mainly kids, 30.00-45.00, few Thin 20.00-30.00.

Lancaster Livestock Auction

Wednesday's market report has been discontinued until further notice because of insubstantial receipts.

Morrison Cove Livestock

Martinsburg, Pa.
Dec. 7, 1992
Report supplied by auction
CATTLE 218. STEERS CHOICE 76.50-79.10; GOOD 67.50-71.50. HEIFERS: CHOICE 74.50-77.10; GOOD 65.50-70.50. COWS: UTILITY & COMMERCIAL 41.00-49.50; CANNER & LOW CUTTER 31.50-42.50. BULLOCKS: GOOD & CHOICE 58.50-61.50. BULLS: YIELD GRADE NO. 1 54.50-58.50. FEEDER CATTLE: STEERS 65.00-79.00; BULLS 53.00-68.00; HEIFERS 54.00-71.00.

CALVES 318. PRIME AND CHOICE, NO MKT. TEST; GOOD 91.00-95.00; GOOD 66.00-89.00; STANDARD 25.00-55.00; HOLSTEIN BULLS 90-130 LBS. 125.00-147.00; HOLSTEIN HEIFERS 90-130 LBS. 120.00-151.00. HOGS: 156. US NO. 1-2 41.50-42.50; US NO. 1-3 39.00-40.50. SOWS: US NO. 1-3 29.00-34.50. BOARS 27.50-32.00. FEEDER PIGS: 66 HEAD. US#1-3 20-50 LBS. 19.00-29.00. SHEEP: 23 HEAD. CHOICE 60.00-79.00; GOOD 52.00-59.00; SLAUGHTER EWES 17.00-23.00. GOATS: 37.00-49.00.

28 LOADS OF HAY. ALFALFA 86.00-102.00; TIMOTHY 76.00-108.00; 11 LOADS OF STRAW 70.00-89.00.

North Jersey Livestock

Hackettstown, NJ
Tuesday, Dec. 8, 1992
Report supplied by auction
CALVES .21-.72% . EASY COWS .24-.45. HEIFERS .39% .65% . BULLS .47-.61% . STEERS .47% -.70% . HOGS .29-.38. ROASTING PIGS EACH 10.00-25.00. SOWS .25-.30. BOARS .27-.30. SHEEP .21-.66. LAMBS EACH 14.00-70.00. LAMBS PER LB. .45-.91. GOATS EACH 35.00-112.50. KIDS EACH 25.00-70.00. HIDES 15.00. TOTAL 1214

New Holland Livestock Auction

Lancaster, Pa.
Thursday, December 10, 1992
Cattle Calves Sheep Goats
Today
781 451 365 134
Last Thursday
1209 679 164 93
Last Year
1126 690 311 165

CATTLE: Slaughter steers 1.00 higher, instances 1.50 higher; slaughter heifers scarce; cows 50-1.00 higher; bullocks steady; bulls steady, although yield grade 1 not fully tested. Supply included 29% slaughter steers and 48% cows.

SLAUGHTER STEERS: Choice 2-3 few 4 1080-1480 lb 75.25-78.00; mixed Choice and Prime 2-3, few 4 1250-1425 lb 77.25-79.00; few Choice 3-4 1200-1475 lb 74.00-75.00; Select and low Choice 2-3 1050-1450 lb 72.00-75.50; few Select 2-3 1050-1300 lb 67.00-71.50.

HOLSTEINS: Few Choice 2-3 1200-1560 lb 64.50-67.50, couple 68.00-68.75.

SLAUGHTER HEIFERS: Few Choice 2-3 1050-1250 lb 71.00-73.75.

COWS: LOW DRESSING BULK HIGH DRESSING Breaking Utility & Commercial 2-3 46.50-49.25 49.50-52.00. Commercial 3-4 42.75-47.00. Cutter & Boning Utility 1-2 45.50-49.50 49.50-51.75. Canner and low Cutter 40.00-42.00, 42.00-45.00. few 38.00-40.00.

BULLOCKS: Few Select 2-3 1150-1300 lb 59.25-63.50.

BULLS: Yield grade 2 1050-1600 lb 55.00-59.00; few yield grade 1 1350-1700 lb 59.00-62.25.

CALVES: Vealers steady to weak. Demand good for Holstein bulls and heifers to return to farm.

VEALERS: Individual Choice 270 lb 91.00; high Good and low Choice 180-365 lb 65.00-81.00, 80-110 lb 45.00-50.00; Standard and low Good 55-80 lb 30.00-42.00.

RETURNED TO FARM: Bulk 90-125 lb Holstein Bulls 125.00-160.00, few 160.00-165.00; small frame 95-120 lb 100.00-125.00, 80-90 lb 85.00-100.00; few 90-120 lb Holstein Heifers 140.00-170.00.

SHEEP: Woolled lambs and slaughter ewes steady. Supply included 70% woolled lambs, 10% New Crop Lambs, with the balance slaughter ewes.

WOOLED LAMBS: Choice 2-3 80-100 lb 64.00-81.00, 50-75 lb 76.00-85.00.

NEW CROP LAMBS: Choice 30-65 lb 105.00-130.00, 10 head 30-45 lb 150.00-180.00.

SLAUGHTER EWES: Utility and Good 25.00-37.00.

GOATS: All goats sold by the head; Large 60.00-90.00, few 94.00-108.00; Medium 36.00-58.00, few fleshy 60.00-71.00; Small, mainly kids, 25.00-40.00, few fleshy 55.00-64.00.

Lancaster County Weekly

Lancaster, Pa.
Friday, December 11, 1992
Cattle Calves
This Week
2800 1460
Last Week
2973 1845
Last Year
3269 1826

CATTLE: Small supply slaughter steers on Thursday weak to 50 lower, with the bulk of the early week sales 1.00-1.50 lower; slaughter heifers steady to weak; cows closed steady to 50 lower, after being 1.00-1.50 lower early; bullocks fully steady; bulls firm to 1.00 higher, although Yield grade 1 not fully tested late. Supply included 30% slaughter steers, 7% slaughter heifers, 38% cows, 5% bulls, with balance feeders.

SLAUGHTER STEERS: Choice 2-3 few 4 1080-1480 lb 74.35-76.50, few late 76.50-78.00; Choice 2 1100-1325 lb 77.00-79.00; few Choice 3-4 1200-1475 lb 73.00-75.00; Select and low Choice 2-3 1050-1450 lb 71.75-75.50; few Select 2-3 1000-1300 lb 67.00-71.50.

HOLSTEINS: Choice 2-3 1125-1550 lb 64.50-67.50; Select 1-3 1050-1525 lb 61.50-64.50.

SLAUGHTER HEIFERS: Choice 2-3 950-1200 lb 71.50-75.10; couple Choice 2 1125-1250 lb 75.50-76.50; Select 2-3 950-1200 lb 66.75-71.00.

COWS: LOW DRESSING BULK HIGH DRESSING Breaking Utility & Commercial 2-3 46.50-49.25 49.50-52.00. Commercial 3-4 42.00-47.00. Cutter & Boning Utility 1-2 44.00-45.00 45.00-49.50 49.50-51.75. Canner and low Cutter 40.00-42.00 42.00-45.00.

BULLOCKS: Choice 2-3 1050-1350 lb 66.50-68.50, couple 71.00-72.25; Select 1-3 1100-1350 lb 62.25-66.00.

BULLS: Yield grade 1 1200-2350 lb 60.00-66.00, few early 66.00-68.00; Yield grade 2 1050-1600 lb 55.00-61.00.

CALVES: Vealers steady to weak; slaughter calves steady. Demand good for Holstein bulls and heifers to return to farm.

VEALERS: Couple Choice 200-270 lb 85.00-91.00; high Good and low Choice 155-365 lb 65.00-85.00, 80-110 lb 42.00-52.00; Standard and low Good 55-85 lb 20.00-42.00.

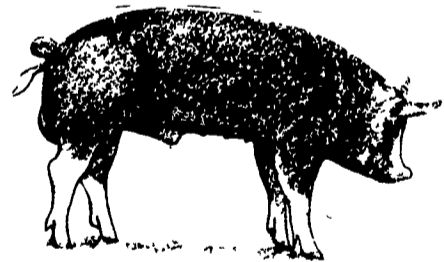
SLAUGHTER CALVES: Good and Choice 275-450 lb 60.00-85.00.

RETURNED TO FARM: Bulk 90-125 lb Holstein bulls 120.00-160.00, few 160.00-165.00; small frame 90-120 lb 100.00-125.00, 80-90 lb 85.00-100.00. Few 80-125 lb Holstein heifers 134.00-170.00, with 25 head 175.00-182.00; small frame 90-105 lb 110.00-130.00, few 65-85 lb 61.00-77.00.

LANCASTER STOCK YARDS
Open 24 hours a day
365 days a year
(717) 394-2611

AUCTIONS
MONDAY
9:00 A.M. - Slaughter Bulls, Heifers, Steers, Cows
10:00 A.M. - Goats, Veal Calves, Lambs
12:00 Noon - Slaughter Hogs
WEDNESDAY
8:00 A.M. - Slaughter Hogs
10:00 A.M. - Slaughter Bulls, Heifers, Steers, Cows
11:00 A.M. - Veal Calves, Lambs
FRIDAY
11:00 A.M. - Stocker and Feeder Cattle
SATURDAY
8:00 A.M. - Slaughter Hogs

Holiday Schedule
No Hog Sale Sat. Dec. 26 & Sat. Jan. 2
Next Feeder Cattle Sale
Friday, Dec. 18 - 11:00 A.M.
LANCASTER STOCKYARDS, INC.
1147 Litz Pike, Lancaster, PA 17601
Incorporated in 1993 - Serving The Community for 97 Years



VINTAGE SALES STABLES, INC.

SALE TUESDAYS
10:30 A.M.
SLAUGHTER CATTLE AUCTION — STEERS, BULLS, HEIFERS, COWS, FEEDER CATTLE
7:30 P.M.
CALVES, SHEEP, GOATS * GET CALVES IN EARLY — OUR STATE GRADER STARTS AT 1:00 P.M.

Selling Feeders Every Tuesday
At Approx. 2 PM

L. ROBERT FRAME, SR., PRESIDENT
GLENN S. FRAME, MGR.
BUS (717) 442-4181 BUS (717) 768-8204
HOME (215) 458-8518
IRWIN MARTIN, FIELD REP. (717) 733-7434
KENNETH E. HERSHEY, FIELD REP. (717) 442-4874

TRUCKING SERVICE
AVAIL-LOCAL & LONG DISTANCE
(RT. 30, 10 MILES EAST OF LANCASTER IN PARADISE, PA)

LEBANON VALLEY LIVESTOCK MARKET, INC.
1 mile East of Fredericksburg along Rt. 22
PHONE JONESTOWN 865-2881
Flea Market Auction every Tuesday at 12:30. Tools, Eggs, Produce, etc.
Buyers & Sellers Welcome

B&R CATTLE CO.
RD 1, Marietta, PA 17547
Office Phone: (717) 653-8164
Specializing In Stockers & Feeders
JOHN BOWMAN
Ph (717) 653 5728
RON RANCK
Ph (717) 656 9849

HAY, STRAW & CORN —SALE—
Please Note New Sale Time! Starting Jan. 3
Sale Starts 10 AM
Every Friday At 10 AM
GREEN DRAGON MARKET & AUCTION
RD No. 4 Ephrata, Pa. 717-738-1117
1 mile North of Ephrata on N. State St.
Out of State Buyers - Cash or Certified Check Only