

1a CONSTRUCTION EQUIPMENT

FORK LIFT Baker Model B50PD, 130" lift, 6000 lb cap, 4' forks, diesel, pneumatic tires, very good condition, \$5800 (717)354-3105

Forklift 1979 Hyster S125H, 12,500 lb. solid tires, LP gas, 218" lift, \$12,500 (717)354-3105

FORKLIFT LULL 400, gas, 4,000 lbs., 34', 1 owner, low hrs., must see to appreciate, \$6,800 410-833-9091

HIGH TENSILE FENCE SPECIAL 1 slot crimping tool for 1/2 length sleeves, includes bolt cutter, \$25 No guarantee

KENCOVE FARM FENCE 4 1 2 - 4 5 9 - 8 9 9 1, 1-800-245-6902

JD 440L Loader Backhoe Parts Only Everything Except Engine and Radiator \$1200 302-834-4508 Jim Weir

JD 544-A rubber tire loader w/cab, 4-in-1 bucket, new engine, excellent condition, \$12,500 (717)752-7131

MIG WELDER 160 Hanson, 220 volts w/2 tanks, does aluminum & steel, \$1200 215/348-3427

★★★★★★★★★★★★
1987 Ford NH Skid Steer Loader Model 781, 1950 Hrs. Implements
 Bucket, Grapple
 Bucket, Forklift,
 Digging Bar, Spare Rim.
717-738-3003
 ★★★★★★★★★★★★

G&H Service, Inc.

Route 206 North, P.O. Drawer E
 Newton, NJ 07860 (201) 383-3370
Outside NJ 1-800-545-1278
Toll Free NJ (Parts) 1-800-382-9207
JD FINANCING AVAILABLE TO QUALIFIED BUYERS
FAX: 201-383-5756

CRAWLER LOADER

1984 JD 455D w/4 & 1 Bucket.....	\$22,000
1986 JD 455E w/ROPS, Reg. Bucket.....	\$24,000
1981 JD 555 w/ROPS Regular Bucket.....	\$16,000
1980 JD 555, ROPS, 4&1 bucket.....	\$16,000
1986 JD 555B, 4-1 bucket.....	\$22,000
1984 JD 755B w/ROPS cab, multi purpose bucket, new u/c.....	\$45,000

CRAWLER DOZERS

1969 JD 350 dozer, 6 way, ROPS, VG bottom.....	\$9,500
1971 JD 350B w/ROPS.....	\$13,500
1987 JD 450E Wide Track Dozer.....	\$30,000
1985 JD 450E Dozer.....	\$24,000
1980 JD 550 Dozer, 4500 hrs.....	\$19,000
1988 JD 650G, 1000 hours.....	\$42,000
1988 JD 750B w/Cab, 1700 Hrs.....	\$48,000
1987 JD 750B w/Rops, 1800 hrs.....	\$42,000
1979 JD 850 Dozer, 5500 Hours, Root Rake.....	\$30,000
1986 Komatsu D-85E-18 Dozer, 2650 Hrs.....	\$48,000

4 WHEEL DRIVE LOADERS

1981 JD 544C, cab, 6415 hrs., 2.70 yd. material bucket.....	\$31,000
1985 JD 544D, cab, 4036 hrs., 2 yd. GP bucket.....	\$42,000
1987 JD 544D, cab, 2800 hrs.....	\$45,000

AGRICULTURAL & MISCELLANEOUS

RM Demco Sprayer, like new.....	\$1,000
New JD 350 Crawler Loader Series 4-1 Bucket Replacement clam and back.....	\$1,500
JD 603 Rotary cutter.....	\$700
3 Yd. 444E Material bucket, new.....	\$2,400
New York Rake RW 7' all options.....	\$1,600
New York Rake RE 8' bare.....	\$1,200

Repower With New JD Engines Up-Grade Your Tractors, Pumps, Air Compressors, Generator Sets, And Most OEM Engine Applications.
2 Year Warranty With Options To 5 Years.



TRAIL KING

STANLEY

SAKAI

TOYOTA

WANTED TO BUY Good Used 490D, 590D Excavators; 750B Dozer

WHEEL LOADER BACKHOES

1984 JD 310B w/cab, 3000 hrs.....	\$14,000
1986 JD 415B, cab, side shift, extend-a-hoe.....	\$16,000
1979 JD 510 w/cab, 4&1 bucket, hammer plumbing, 3000 hrs.....	\$14,000
1983 JD 510B w/ROPS, Hyd. for Hammer.....	\$22,000
1985 JD 515B with Cab & side shift Backhoe Hammer Plumbing.....	\$24,000
1987 JD 610C 4WD, Cab, 2217 Hrs.....	\$38,000
1972 MF 50A w/ROPS.....	\$7,500
1972 Dynahoe 190 w/Cab.....	\$9,000
1978 Dynahoe 200 4WD w/cab, side dump bucket.....	\$10,000

WHEEL TRACTOR

1985 Bradco (Ford 1910) Loader Backhoe 4WD.....	\$14,500
1988 JD 950, 600 Hrs., 4 WD, Turf tires.....	\$9,000

SKID STEER LOADER

1985 Bobcat 843 w/grapple bucket.....	\$8,500
---------------------------------------	---------

HYDRAULIC EXCAVATORS

1975 Cat 225, as is.....	\$21,000
1978 JD 690B, 8000 hrs.....	\$30,000
1988 JD 690D-LC, 2600 hrs.....	\$65,000
1986 JD 25 Excavator, 2428 Hrs., New Tracks.....	\$15,000
1988 JD 70D w/blade, long stick, 1350 Hrs.....	\$39,000
1989 JD 290D, 1600 Hrs., Power Train Secure.....	\$42,000
1988 Komatsu 120-3, low hrs., Esco bucket.....	\$24,000
1986 Komatsu 150-3, 3800 hrs.....	POR

ROAD & COMPACTION EQUIPMENT

1986 Eager Beaver SRH 300, 102 hrs., like new.....	\$7,000
1973 7-10 Ton Rex Roller.....	\$6,500
1977 Hyster C-350BD 8-12 Roller.....	\$7,500
1990 Sakai SW-25 74" double drum, 328 hrs.....	\$22,000
1988 Sakai SW-41 52" double drum, 384 hrs.....	\$32,000
* 1991 Sakai SV70D 67" Smooth drum, 368 hrs.....	\$50,000
* 1990 Sakai SV91D 84" smooth drum, 554 hrs.....	\$62,000
* Drum Drive	

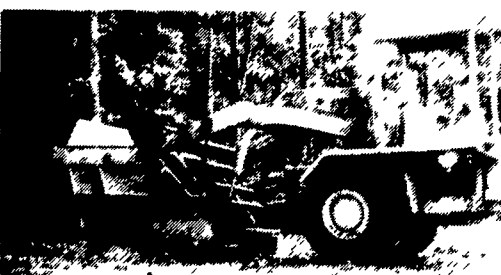
TRAILERS & TRUCKS

1988 Eager Beaver 35 Ton Detachable Gooseneck.....	\$11,000
Mighty Mover landscape trailer, 2 axles, long bed.....	\$1,700
1973 Gas International 1800 tandem dump truck.....	\$5,500
1975 Gas International 1600 rack body truck.....	\$2,000



BOBCAT 732 Skid Steer Loader
 Deutz Diesel, New Hydraulic Sector,
 40% Tires, \$7,950
Want To Sell-Make an Offer
Curry Supply Co.
 Curryville, PA
Call 1-800-345-2829

SALE or TRADE...
717-933-8853 or 933-4062



(2) Webco 101-F's, Self Loading Scrapers, 9 Cu. Yd., Cummins Diesel, 1 Very Good, 1 Parts Machine.....Both For \$12,500
 Webco 101-G Self Loading Scraper, 11 Cu. Yd., Cummins Diesel..... \$17,500



MANADA CONSTRUCTION CO.
 Larry R & Vaughn E Brubaker, Owners
 Land Improvement Contractors
 151 Meckville Road Ph 717 933 8853
 Myerstown, PA 17067 or 933 4062
 Certified Installers of Environmental Liners & Excavation



WENGERS, INC.

251 South Race St., Myerstown, PA 17067

717-866-2130

HOURS: Mon.-Fri. 7:30 to 5:00; Sat. 7:30 To Noon

NIGHTS, PHONE:

717-866-7147

717-273-9089

FAX

717-866-4300

(9) BACKHOES

(9) Hoe Attachments.....From \$2,000	
Dig It 148 Compact.....	\$5,500
Case 580B - Diesel - 1972.....	\$8,900
Ford 515 Diesel - 1975.....	\$8,900
IH 260A - Diesel - 1979.....	\$8,900
IH 270A - 1979 - Diesel.....	\$9,900
JD 310A - ROPS - 1977.....	\$12,500
Case 580 Super E - Cab 1986.....	\$15,000
Dynahoe 200B - 4x4 - Big.....	\$15,000
JD 710B - EROPS - 1985.....	\$28,500

(12) CRAWLER LOADERS

JD 440 Diesel.....	\$4,500
JD 450B - ROPS - 1972.....	\$9,900
IH 100E - ROPS - 1975.....	\$9,900
Cat 955K - Ripper - 1968.....	\$10,500
JD 350C - With Hoe - 1977.....	\$12,500
Cat 977K - ROPS - 1970.....	\$15,000
Cat 941B - 1974 - 4 In 1 - ROPS.....	\$16,500
Fiat FL9 - ROPS - 1979.....	\$16,500
Case 1150C - ROPS - 1981.....	\$18,500
Case 455C - ROPS - 1986.....	\$22,500
Case 1155D - 4NI - 1983.....	\$24,500
CAT 983 - Cab - 1969.....	\$35,000

(4) TRACTORS WITH LOADERS

(2) Kubota L345 - 4x4 - 3 Pt. - PTO.....	\$5,900
Versatile 150 - 4x4 - 3 Pt. - PTO - 1977.....	\$9,500
Ford 5600 - 4x4 - 3 Pt. - PTO - 1981.....	\$14,500

(3) SKID LOADERS

JD 90 - Gas - 1980.....	\$4,500
Case 1845 Diesel - 1981.....	\$6,900
Case 1818 Diesel - New.....	Coming In

MISCELLANEOUS CONSTRUCTION

(75) New & Used Hoe Buckets.....	COME SEE
(75) Loader Buckets.....	COME SEE
(75) Set Forklift Forks.....	COME SEE
(3) Tree Planter.....	\$595-\$795
Giant Leaf Vacuum.....	\$900
Ripper For Crawler.....	\$1,000
Root Rake - 7'.....	\$1,200
Concrete Pump - Gas.....	\$1,500
(2) Sweepers.....	\$695-\$2,000
Layton Asphalt Spreader Box.....	\$2,500
Schramm 160 Air Comp.....	\$3,000
Large Snowblower For Loader.....	\$3,000
1987 1 1/2 Ton Vibratory Roller.....	\$3,500
Vermeer Stump Grinder.....	\$3,500
IH 140 w/Power Broom- 1972.....	\$3,900
Vibratory Pull Type Roller - Diesel.....	\$3,900
(7) Sheeps Foot 2 Drum Roller.....	\$2,500/\$4,500
JD 5010 Scraper.....	\$5,900
Ingersol 175 Diesel Air Compressor.....	\$5,900
Construction Ramp, 35' Long.....	\$6,900
Huber 1500 Grader - Diesel.....	\$7,900
JD 760 Scraper.....	\$10,900
Insley H1000 Excavator- 1974.....	\$13,500
Clark Super 501 Grader- 6x6.....	\$14,500
Galion V05-84A Vib Roller- 84".....	\$19,500
Bucyrus Erie 45C Truck Crane.....	CALL

(9) DOZERS

IH TD5 - Winch - No Blade.....	\$2,500
AC HD6 - Diesel.....	\$4,900
JD 350C-6 Way - 1984.....	\$12,500
Case 350B - ROPS - 6 Way- 1980.....	\$12,500
JD 450B - 6 Way - ROPS - 1973.....	\$12,500
Cat D3 - 6 Way - 1976.....	\$13,500
IH TD7E - 6 Way - 1984.....	\$17,500
Komatsu D65E - ROPS - 1976.....	\$19,500
Case 850C - ROPS - 6 Way - 1981.....	\$22,500

(9) TRUCKS/CARS

1965 Chevy C80 Dump.....	\$1,000
1982 Yamaha 650 Maxim Cycle.....	\$1,500
1985 Honda Accord LX - 4 Dr.....	\$3,900
1977 IH 31' Bucket Truck.....	\$5,900
(2) 1979 Ford F600 31' Bucket Truck.....	\$6,900
1985 Ford E350 Mini Bus - V8 Gas - 18 Pass - Double Air.....	\$6,900
1980 Ford F600 28' Bucket Truck.....	\$8,900
1989 Acura Legend L Sedan.....	\$15,900

(3) FORKLIFTS

White 4000 Lb - LP Gas - Air Tires.....	\$4,900
Yale 15000 Lb - Diesel.....	\$5,900
Pettibone B66-4x4-Extendo.....	CALL

(2) LOG SKIDDERS

JD 440A - Diesel - 1970.....	\$8,900
JD 440C - Diesel - 1980.....	\$18,500

(22) TRAILERS

1991 5 Ton - Tag-A-Long - 16'.....	\$1,895
(2) 1992 5 Ton Tag-A-Long - 16'.....	\$1,995
1979 3 Axle Tag-A-Long - 12 Ton.....	\$1,999
(4) 1993 5 Ton Tag-A-Long - 18'.....	\$2,195
1977 2 Axle 7 Ton Tag-A-Long.....	\$2,400
1978 3 Axle 11 Ton Tag-A-Long.....	\$2,700
2 Axle 12 Ton Tag-A-Long.....	\$2,900
18 Ton Tag-A-Long.....	\$2,900
13 Ton 3 Axle Tag-A-Long.....	\$3,400
1984 11 Ton Tag-A-Long.....	\$3,500
35 Ton Lowboy.....	\$3,900
1987 10 Ton Tag-A-Long.....	\$4,200
1968 40 Ton Lo-Boy.....	\$4,900
Hyster 25 Ton LowBoy.....	\$4,900
1992 9 Ton Tag-A-Long.....	\$5,850
1992 10 Ton Tag-A-Long.....	\$6,450
1973 Transport 35 Ton Detachable.....	\$9,900
1979 Load King 35 Ton Folding Gooseneck - Tri Axle.....	\$13,900

(6) RUBBER TIRE LOADERS

Hough 90 Diesel - 1959.....	\$4,000
Michigan 55 - Cab - Diesel - 1968.....	\$6,900
Versatile 150 - Cab - 1977.....	\$9,500
Fiat 545 - Cab - 1964.....	\$10,500
Fiat 940 - Cab - 1976.....	\$11,900
Cat 950 - Cab - 1970.....	\$25,000