

Okla. City Feeder Cattle

Oklahoma City, Okla.

Wednesday, December 2, 1992

Compared to last week: Feeder cattle and calves over 500 lbs. steady to \$1.00 higher; lighter weight calves regained last weeks weather loss and steady to \$2.00 higher. Demand very good on all classes and grades. Weather clear with temperatures in 50's; ideal for handling cattle. Conditions very attractive to buyers on both calves and yearlings; weigh-ups gaunt to average; flesh average to moderately thin. Calves in the hardest condition of this season which is marked contrast and improvement for buyers over the softer variety offered previously. Wheat growth is limited. Best grazing appears to be in southwestern and north central parts of Oklahoma. Slaughter cows steady to \$1.00 lower than last week's sharp advance, exception noted on Breaking Utility \$2.00 higher. Slaughter bulls steady to \$1.00 higher. Demand good for cows and bulls. Receipts this week 5,675; last week 3,335; last year 4,047. Supply consisted of 41 percent yearlings and calves over 600 lbs.; 45 percent calves; 14 percent cows and bulls. Bulk prices follow; weighted average prices in parenthesis.

Feeder Steers: Medium and Large Frame 1, 300-400 lbs. \$104.50-\$111.50 (\$109.24); 400-450 lbs. \$100.00-\$107.00 (\$102.40); 450-500 lbs. \$95.00-\$98.25 (\$96.71); 500-550 lbs. \$93.00-\$96.00 (\$94.11); 550-600 lbs. \$87.00-\$92.25 (\$88.63); 600-700 lbs. \$84.00-\$90.00 (\$86.18); 700-800 lbs. \$83.50-\$88.75 (\$85.88); few 800-900 lbs. \$86.00-\$83.75 (\$81.30). Few Large Frame 2 Holsteins, 250-350 lbs. \$82.00-\$85.50; 500-550 lbs. \$72.50-\$79.50; 625-750 lbs. \$68.00-\$70.00.

Feeder Heifers: Medium and Large Frame 1, 300-400 lbs. \$89.00-\$94.00, thin \$94.00-\$104.50 (\$96.85); 400-500 lbs.

\$85.25-\$90.00 (\$88.29); 500-600 lbs. \$82.00-\$87.00 (\$84.36); 600-700 lbs. \$82.00-\$85.00 (\$83.55); few 700-800 lbs. \$77.50-\$81.75 (\$78.93).

Slaughter Cows: Cutter, Boning and Breaking Utility Y.G. 1-3 average. dressing \$44.50-\$48.50; high dressing \$48.00-\$53.00; low dressing \$40.00-\$44.00. Canner \$39.50-\$42.00, full \$35.00-\$38.00.

Slaughter Bulls: Y.G. 1 1400-2000 lbs average dressing \$56.00-\$59.50; high dressing \$62.50-\$64.75.

Replacement Cows: Pre-tested for Bangs, Pregnancy, and Age: Medium and Large Frame Average to High Quality Cows: 2-5 year old 800-900 lbs. 3-7 months bred \$66.50-\$74.00 per cwt 5-8 year old 850-1100 lbs. 2-8 months bred \$58.00-\$68.00 per cwt 1150-1400 lbs. \$48.00-\$57.00 per cwt 9-10+ yr old 800-1200 lbs. 2-8 months bred \$45.00-\$54.00 per cwt.

Westminster Livestock

Hagerstown, Md.

Dec. 1, 1992

Report supplied by auction

SLAUGHTER COWS: 104 HEAD, 1.50 HIGHER. UTILITY 46.50-50.00; HIGH DRESSING 50.00-52.25; CANNERS 43.00-47.00; SHELLY 43.00 DOWN.

BULLS: YG#1 1400-2000 LBS. 59.00-62.50; YG#2 53.00-58.00.

FED STEERS: 1 PRIME 1075 LBS. AT 75.00; 2 HIGH CHOICE HOLSTEINS 1100-1200 LBS. 69.00-71.50; SELECT 1300-1500 LBS. 65.00-69.00.

FED HEIFERS: 1 PRIME 950 LBS. AT 74.00.

VEAL CALVES: 1 CHOICE 400 LBS. AT 84.00; FEW 150-300 LBS. 78.00-88.00; CULLS 5.00-8.00 LOWER; 60-100 LBS. 42.00-49.00; WEAK/ROUGH 40.00 DOWN.

FARM CALVES: HOLSTEIN BULLS #1 90-120 LBS. 135.00-151.00; #2 80-110 LBS. 90.00-125.00; HOLSTEIN HEIFERS FEW TO 132.00.

BUTCHER HOGS: 70 HEAD. US#1&3 215-260 LBS. 39.00-39.75; 280-325 LBS. 30.00-36.50; 265-280 LBS. 35.00-37.25.

SOWS: 70 HEAD, 2.00-3.00 LOWER. 300-500 LBS. 30.00-32.75; 500-700 LBS. 31.00-33.75.

BOARS: 400-750 LBS. 28.75-29.75.

STOCK CATTLE: 163 HEAD. STEERS 300-500 LBS. 74.00-86.00; 500-700 LBS. 68.00-77.00; 700-900 LBS. 64.00-74.00; 900-1050 LBS. 62.00-74.00.

HEIFERS: 300-500 LBS. 65.00-73.00, FEW 75.00-78.00; 500-700 LBS. 62.00-70.00; 700-900 LBS. 60.00-68.00; 900-1000 LBS. 56.00-63.00.

BULLS: 300-500 LBS. 70.00-86.00; 500-600 LBS. 62.00-77.00; 600-800 LBS. 53.00-64.00.

LAMBS: 6.00-10.00 HIGHER! HIGH CHOICE 100-120 LBS. 57.00-64.00; 70-95 LBS. 74.00-85.00; 60-70 LBS. 77.00-90.00; MEDIUM-GOOD 80-90 LBS. 58.00-64.00.

SHEEP: 5.00 HIGHER. FEW 100-200 LBS. 32.00-42.00; 200-300 LBS. 22.00-27.00.

GOATS: LARGE 60.00-82.00; MEDIUM 30.00-60.00; SMALL FLESHY 35.00-40.00.

PIGS AND SHOATS: 127 HEAD, 2.00 HIGHER. BY THE HEAD, 30-40 LBS. 22.00-29.00; 50-70 LBS. 28.00-31.00; BY THE POUND, 110-150 LBS. 26.00-30.00; 180-200 LBS. 35.00-37.50.

STOCK BOARS: 190-290 LBS 32.00-34.00.

Lancaster Farming, Saturday, December 5, 1992-A7

Carlisle Livestock Market

Carlisle, Pa.

Tuesday, Dec. 1, 1992

SLAUGHTER HEIFERS: SELECT 900-1050 LBS. 64.00-67.25.

SLAUGHTER COWS: BREAKING UTILITY AND COMMERCIAL 48.00-52.00; CUTTER AND BONING UTILITY 47.00-50.00; CANNER AND LOW CUTTER 42.00-46.50; BIG MIDDLE 43.00-47.50; SHELLY 41.00 AND DOWN.

SLAUGHTER FAT BULLS: YG#2 56.50-57.00.

FEEDER STEERS: ALL WEIGHTS, MEDIUM AND LARGE #2 69.00-73.00.

FEEDER HEIFERS: ALL EIGHTS, MEDIUM AND LARGE #1 64.00-72.00; MEDIUM AND LARGE #2 56.00-62.00.

FEEDER BULLS: ALL WEIGHTS, LARGE #2 69.00-72.00.

VEAL CALVES: CHOICE 95.00-110.00; GOOD 80.00-95.00; STANDARD 55.00-70.00; LIGHT/WEAK 50.00.

HOLSTEIN FARM BULLS: ACTIVE. OVER 95 LBS. TO 166.00; UNDER 95 LBS. TO 157.50.

HOGS: BARROWS AND GILTS, US#1-3 210-260 LBS. 38.00-39.75; OVER 270 LBS. 38.00-39.00.

SOWS: 300-550 LBS. 28.50-31.75; #2&4 ALL WEIGHTS 22.00-27.50.

BOARS: 24.75-32.00.

SHEEP: EWES 22.00-40.00.

LAMBS: CHOICE 50-60 LBS. 130.00-135.00; CHOICE 70-90 LBS.

76.00-97.50; GOOD 40-60 LBS. 86.00-105.00; GOOD 75-110 LBS. 58.00-73.00.

GOATS: BY THE HEAD, LARGE 75.00-89.00; SM/MED 47.50-57.00.

SALE EVERY TUES. PRODUCE, RABBITS, POULTRY AND EGGS 4:30 P.M. AND LIVESTOCK AT 7 P.M.

Belleville Livestock Auction

Belleville, Pa.

Wednesday, December 2, 1992

CATTLE 136...Supplied by the auction... COWS: Breaking Utility and Commercial 47.75-49.85, one at 50.60, Cutter and Boning Utility 46.00-48.60, Canner and low Cutter 42.00-45.75. Shells down to 38.00. BULLS: Yield Grade No. 2 53.00-54.50. FEEDER CATTLE: steers 69.00-81.00, heifers 62.00-72.00.

CALVES 120... VEALERS: Good 54.00-65.00, Standard and Good 48.00-54.50, Utility 40.00-47.50. FARM CALVES: No. 1 Holstein Bulls 140.00-166.00, No. 2 100.00-140.00, No. 1 Holstein heifers 130.00-160.00.

HOGS 152... BARROWS AND GILTS: US No.1-2 230/260 lbs. 41.50-42.50, 1-3 200/280 lbs. 40.25-41.25. SOWS: US 1-3 31.00-34.60, lot 39.00.

FEEDER PIGS 100...US 1-3 40/50 lbs. 28.00-34.00, 30/40 lbs. 22.00-25.00.--- all per head.

SHEEP 0..No market test.

GOATS 0. No market test.

Help in Buying ANGUS

as close to you as 301/271-2767

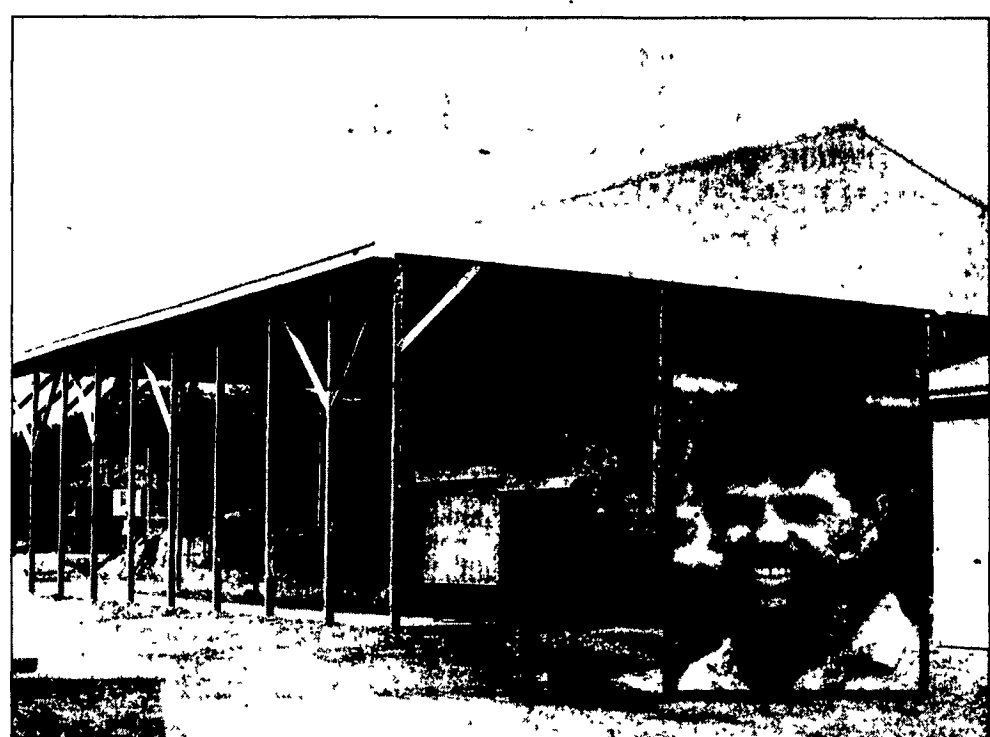


Just pick up the phone and call. Or drop a note. I'll be happy to talk over the type and kind of Angus for your needs—and help you find them. No obligation whatever.

Call or write me today

BILL POWELL, Regional Manager
American Angus Association

Call 301/271-2767 Box 295, Thurmont, MD 21788



A SALUTE FOR ENVIRONMENTAL STEWARDSHIP AND COMMUNITY SERVICE

Reading Bone Fertilizer Cited For Facility Improvements

The Ciba-Geigy Agricultural Division recognizes Reading Bone Fertilizer, Leesport, for continued environmental stewardship and community service.

The farm supply operation has made several important site improvements aimed at safeguarding the environment. Since 1990, the farm center added new diking and rinsate systems, plumbing, and bulk tanks, all sealed and roofed in its new warehouse

Facility Manager Randy Weyer says his staff is committed to environmental responsibility "We're located in the center of Leesport, so it's important that we're good neighbors to the people in town," he says. "We also have a river about 400 yards from our plant, so we are dedicated to groundwater and

surface water protection. Our containment systems ensure protection."

A major agrichemical manufacturer, Ciba-Geigy sponsors a site-improvement program that helps defray the costs of such environmental upgrades. And for more than 30 years, Ciba-Geigy has helped farmers protect their crops from weeds, disease and insects while preserving the area's natural resources.

Progressive and responsible dealers like Leesport's Reading Bone Fertilizer ensure that American agriculture remains the most efficient, productive and environmentally responsible agricultural system in the world.

CIBA-GEIGY

BOYDELL FARMS

302 Iona Rd., Lebanon, PA 17042

Phone: 717-272-8943

DISTRIBUTORS FOR:

SILO QUEEN



NEW LESS 2329
2525 6% BIRD FOOD
PAID IN DECEMBER

SOYBEANS



3090 E 354-284-Shore
Resnick - Pella

TIMOTHY, TORO and
CLIMAX TIMOTHY

ALFALFA
84 VWAP VERNAL WETFOOT ERIE

BALER TWINE
Early Payment By Dec. 24th

FERTILIZER

BALBOA TYPE RYE
TP RYE & DANCO RYE

FIELD PEAS & SPECIAL OATS | PECAL COMBINATION OF PEA & TRICAL

WHOLESALE & RETAIL

Agricultural Producers

Today's ag-markets are extremely volatile and likely will remain that way for the balance of this marketing year.

Let us help...

- Cash Grain Merchandising
- Cash Feed Stuff Sales (including cotton seed and hominy)
- Grain Forward Pricing
- Livestock Forward Pricing
- Full Service Futures Brokerage
- Market Consulting
- Rail-to-truck Facilities at Palmyra-Greencastle

IN USA - 1-800-722-6246

LOCAL - 1-717-838-7050

