

Christmas Tree Farm

(Continued from Page B16)

If desired, workers will also drill a hole in the tree trunk so that it will fit a fail-proof tree stand, which is sold at the farm.

"Even if the tree is crooked, it will stand straight when the hole is drilled," Pierce said.

Elizabeth Farms also offers a recycling service by providing tree bags to those interested in returning trees to be shredded for mulch.

Live balled and burlapped trees are also available.

Six pine tree varieties are grown on the farm:

- Scotch Pine: One of the most popular Christmas trees. Has medium to long green needles with very good needle retention.

- White Pine: Very popular as a Christmas tree and ornamental. Has long soft needles and delightful fragrance. The color is blue-green to green.

- Douglas Fir: Extremely popular as a Christmas tree. Needles are flat, about 1-inch long and range in color from blue-green to green. Excellent needle retention.

- Fraser Fir: Popular ornamental and Christmas tree. Most fragrant

of Christmas trees. Has excellent needle retention and a rich green blue color.

- Colorado Blue Spruce: A popular Christmas tree that ranges in color from dark green to silver blue. This is a short needle tree.

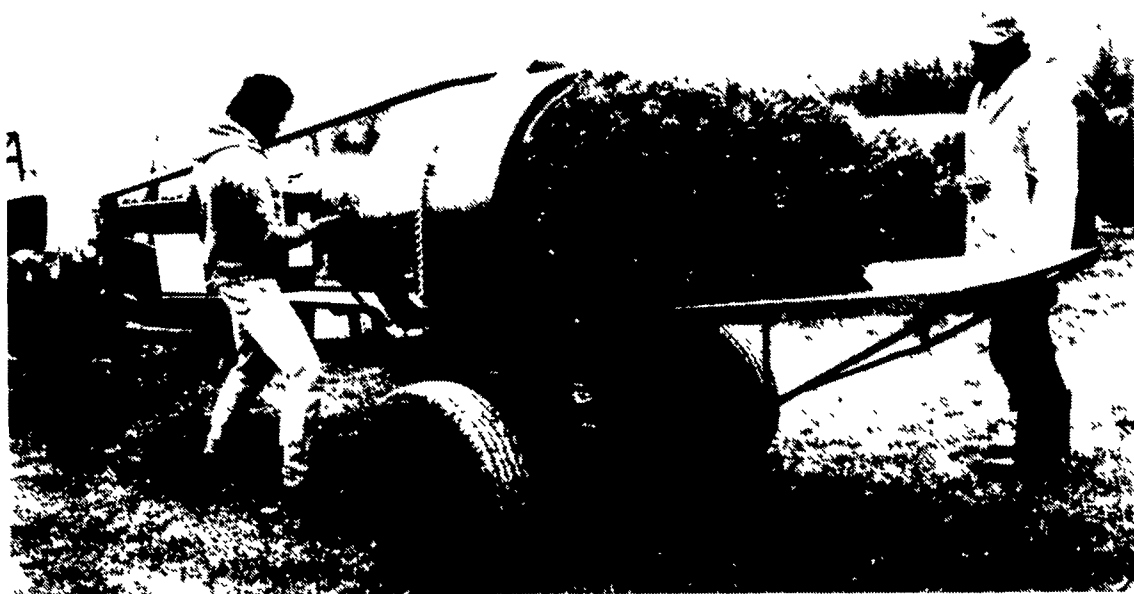
- Norway Spruce: Excellent for windbreak. Deep green, stiff needles. Can be used for Christmas trees but must be maintained properly for needle retention.

In addition to tree sales, workers make fresh wreaths and swags, which are dipped in a preservative to make them long lasting. Poinsettias are also sold.

A wreathmaking machine with a foot pedal is used to close points on a wreath to hold the greens in place. Mixed greens are used for the wreaths although customers may choose any greens they prefer.

Both retail and wholesale selling is done. Pierce said that he has several retail lots located in Philadelphia. In addition, truckloads of the trees are shipped to New York, New Jersey, Maryland, Delaware, Connecticut, and other areas of Pennsylvania.

Elizabeth Farms also offers



A baling machine tightly ties the tree so that it can be easily transported by car.

tours. Students that tour the farm are given brochures and coloring books that tell about the work tree farming requires.

Elizabeth Farms is located on

Hopeland Road, Brickerville. It is open every day until Christmas, from 9 a.m. to 4:30 p.m. For more

information, call (717) 626-7878 daytime or at (717) 949-3248 evenings.

Multi Fuel Furnaces & Boilers Wood, Coal & Oil



Hand fired wood & coal models also available for central heating.

PENN MFG. CO.

393 W. Lexington Rd., Litzitz, PA 17543
Call (717) 626-1397 or 627-2303

KEYSTONE GUN-KRETE




CONCRETE PUMPING SERVICE

Featuring

- Sidewinder 46 Concrete Pump • Up To 40 Cubic Yards Per Hour
- Pump Up To 150 Ft. Vertical And 800 Ft. Horizontal

CONCRETE SPRAYING SERVICE
A Proven Way Of Applying Concrete

- Repair Retaining Walls
- Manure Pit Construction
- Strengthen Existing Masonry Walls
- Trench Silo Construction
- Reseal Manure Pits
- Silo Repair

KEYSTONE GUN-KRETE
61 Poplar Street Gordonville, PA 17529
(717) 768-3641

CUSTOM MADE FEED BINS FOR FARMS — FEED MILLS



- Made of 13 gauge Steel
- All welded seams
- Gravity Flow or Auger

Free Estimates

Also - Steel Roof Trusses for Buildings - Portable Hog Buildings - Bucket Elevators - Grain Augers Distributors - Flow Pipes & Accessories

We Sell, Service & Install
Ph: 717-345-3724

STOLTZFUS WELDING SHOP

Owner - Samuel P. Stoltzfus
RD 3, Box 331
Pine Grove, PA 17963

MILK AMERICA'S HEALTH KICK

Strickler Metal Roofing

**SPECIALIZING IN
STANDING SEAM ROOFING**

ROLL FORMED PANELS FOR CONTINUOUS UNIFORM SEAMS Galvalume, Galvanized and other materials available.



Work approx. 80 mile radius of Lebanon, PA



CONCEALED FASTENERS **WATER TIGHT DOUBLE LOCK APPLICATION**

For Free Estimate Phone
Route #2, Box 350-A Annaville, PA 17003 717-865-3093

ECI Calf Milk Replacer

New ... Improved

Now contains
INSTANT PLUS

Now ECI Milk Replacer is even easier to use with this newly developed additive. *Instant* solubility . . . and the mixed formula *stays* mixed with all the necessary nutrients suspended in the liquid. Sedimentation is virtually eliminated. Same feeding directions, same size bag, same measuring cup, same top quality you associate with all ECI labeled products. *Now available in 10% and 20% high fat content.*



LOOKS LIKE MILK . . . FEEDS LIKE MILK . . .

at less than half the cost!

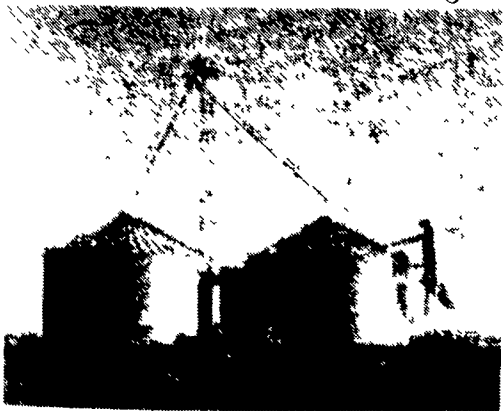
Excellent feeding results at a dollar cost you'll find hard to believe. One 50 lb. bag makes 500 lbs. of food. Economy PLUS the scientific way to raise outstanding herd replacements. Use ECI Calf Milk Replacer with the high performance, high energy formula containing oxytetracycline for better health and faster growth with Instant Plus for easier mixing and more efficiency.

EASTERN CROWN INC.
Box 216, Vernon, N.Y. 13476

DISTRIBUTORS OF QUALITY DAIRY SUPPLIES AND ECI SOFT DESIGN INFLATIONS

GRAIN STORAGE

NATURAL GRAIN DRYING FEED BINS AUGERS
FLOORS **GSI** DRYING FANS AND HEATERS
WET TANKS GRAIN DRYERS



automatic farm systems

608 Evergreen Rd.
Lebanon, PA 17042
(717) 274-5333

"We not only give you what we have; but also what you want."