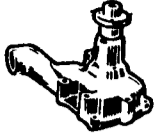
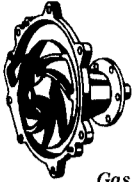


### Spring Garden Repair

**Isaac S. Stoltzfus**  
145 Spring Garden Road  
Kinzers, PA 17535



Gas & Diesel Engine Rebuilding  
Cast & Aluminum Head Rebuilding & Welding  
Block Boring & Sleeving  
Flywheel Grinding  
Engine Parts  
Tractor Pistons & Sleeve Kits  
Rebuild Tractor Heads  
New & Rebuilt Water Pumps



**Case W24C**  
New Center Pin, Excellent Rubber, Ready To Work  
**\$14,500**  
410-833-9091



**IH 3388, 2+2, dual PTO, clean \$10,500**  
IH 966 TA, dual hydraulic \$4,900  
IH 1066 Black, Stripe, New Rubber \$5,900  
IH 2 Post Roll Guard \$595  
IH Front Wts. \$35.00  
**(717) 532-8926 No Sunday Calls**

### ATTENTION FARMERS

If you have deteriorating concrete masonry or stone walls, have it repaired with GUNITE®

For information and estimates call  
**Martins Silo Repair**  
**(215) 445-9834**

# WENGERS FARM MACHINERY, INC.

Ask For:  
**Dave Wenger**

**ROUTE 501 - 1 MILE SOUTH OF MYERSTOWN, PA.**  
**717-866-2135**

Mailing Address: 251 S. Race St.  
Myerstown, PA 17067

**HOURS:**  
MON.-FRI. 7:30-5  
SAT. 7:30-NOON



1976 John Deere 4400 Diesel w/13' Platform Big Tires, Nice Condition.



New Holland 1002 Stackliner, 56 Bale Capacity, Very Nice Condition, Not Much Use.



Long 3 Pt. Rotary Tillers.  
55" — \$1,495 63" — \$1,795  
72" — \$1,995



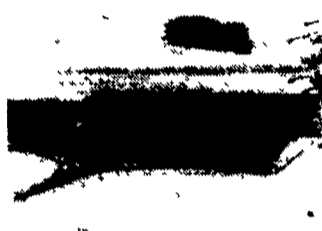
Several Used Tractor Cabs. I May Have One To Fit Your Tractor. Call Now, Ask For Dave Wenger.



Kewanee 750 13'6" Cushman Gang Disc, 8 1/2" Spacing, 19" Front, 20" Rear Blades.



Several New & Used Loader Buckets To Fit Various Loaders, JD, IH, Ford, Case, Etc.



Brillion 15' Cultimulcher, Very Nice Condition, 2 Available.



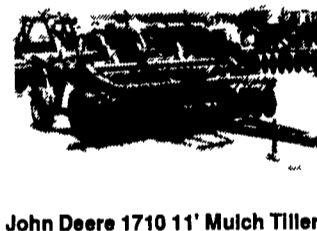
International 500 Cutting Disc, 32 Blades 21" Front Blades, 22" Rear And 10" Spacing Tandem Wheels, New Paint.



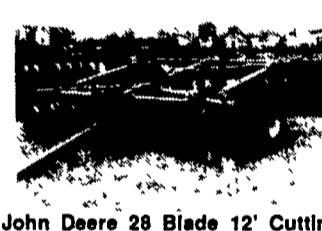
John Deere 40 Blade Finishing Disc 20" Front, 18" Rear, 8 1/2" Spacing.



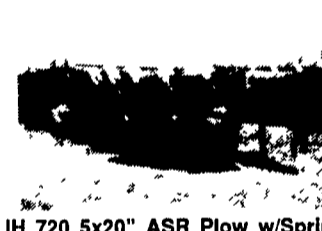
Massey Ferguson 57 4x16" Roll-Over Plow (2 To Choose From).



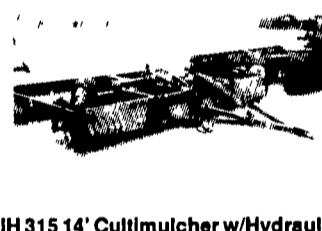
John Deere 1710 11' Mulch Tiller w/Walking Tandems In Good Condition, Also 9 Shank.



John Deere 28 Blade 12' Cutting Disc, 11" Spacing, 22" Front Blades, 24" Rear Blades.



IH 720 5x20" ASR Plow w/Spring Coulters And Trash Boards.



IH 315 14' Cultimulcher w/Hydraulic Cylinder, Good Condition.



Oliver 6x18" Automatic Spring Reset w/Spring Coulters And Cover Boards.

### FARM TRACTORS

- 1980 JD 4440, Cab, Air, Quad, Near New 18x38 Radials, Front & Rear Weights, Nice
- 1979 JD 4040, ROPS, Powershift, 18.4x38 Tires, Nice
- 1974 JD 4430, Cab, Air, Quad, 18x38, Very Good
- 1975 JD 4230, Cab, Air, Quad, New 18x38, Front Weights
- 1963 JD 3010 Diesel, Tricycle, Clean Tractor w/Front & Rear Weights
- 1968 JD 3020, 16.9x34 Tires, WF, Syncro, Very Nice
- 1976 IH 1486 Cab, Air, Very Good 18x38, Front Weights, Nice Inside And Out
- 1976 IH 1086 Cab, Air, Good 18x38 Radials, Front & Rear Weights, Nice Tractor
- 1974 IH 1066 w/Year-A-Round Cab 18.4x38, Weights, Sharp, Low Hours, Axle Duals
- 1985 IH 385, Low Hours, 1 Remote, Very Nice, 35 HP
- 1982 Case 4490, 4WD, Cab, Air, Near New 18x34, 3 Pt., PTO, A Very Nice Tractor
- 1981 White 2-85, Fender, Low Hours, 16.9x38, Red Stripe, Very Nice
- 1976 White 2-70, 4WD, Year-A-Round Cab, 18.4x34 Tires, 2 Remotes
- 1965 Oliver 1650 Diesel, WF, 2 Remotes, Poor 18.4x34 Tires
- 1977 Case DB 990 Diesel w/Loader
- 1970 JD 1520 Gas w/JD 145 Loader
- 1990 Kubota L2050 4WD w/Loader, Turf Tires, 20 HP
- 1965 Case 930CK, WF, 3 Pt., 18.4x34 Tires
- 1962 Case 930 Standard 18.4x34 Tires, Hand Clutch, 2 Remotes, No 3 Pt.
- 1956 MM 445, WF, P.S., 3 Pt. 38" Tires, A Nice One
- 1976 Farmall 140 w/Snow Blade- Woods L59 Mower Available
- 1972 AC 170 Diesel, WF, 3 Pt., Good Tractor
- 1940 Farmall A w/Plow And Cultivator, Crank Start

### TILLAGE

- IH 720 5x20 ASR Plow
- IH 642 4x16 Rollover Plow- 3X Base
- JD 4200 4x18 Rollover Plow
- JD 1450 4x18 Trip Back Plow
- JD 1450 5x16 Trip Back Plow
- (2) JD 3x16- 3 Pt. Plow
- (2) JD 3x14- 3 Pt. Plow
- White 3x16- 3 Pt. Plow
- White 508 3x18 ASR Plow
- Oliver 6x18 ASR Plow
- MF 880 4x16 ASR Plow
- (2) MF 57 4x16 Rollover Plow
- Long 4X 2 Way Plow- 3X Base
- JD 1710- 11' Mulch Tiller
- JD 1710A 9' Mulch Tiller
- Brillion 12' Pull Chisel Plow
- MF 9' 3 Pt. Chisel Plow
- JD 9' Offset Disc
- Miller 11' Offset Disc
- (3) IH 500 Cutting Disc, 12', 13' & 14'
- JD 12' Cutting Discs
- (2) White 271- 18' Wing Fold Rockflex
- IH 470- 14' & 15' Discs
- (2) IH 37- 9 1/2 Discs
- Kewanee 12' Disc
- Bush Hog 12' Cutting Disc
- JD RWA 8' Disc
- JD 110 14' Disc
- JD 215 10' Finish Disc
- JD KBA Disc
- JD 13' 3 Pt. Field Conditioner
- Lorenz 13'-3 Pt. Field Conditioner w/Rolling Basket
- IH #45- 21' Wing Fold Field Cult.
- (2) IH #45- 19' Wing Fold Field Cult.
- IH #45- 18' Wing Fold Field Cult.
- (3) IH #45- 12'- 3 Pt. Field Cult.
- IH #45- 12' Fast Hitch Field Cult.
- White 16' Wing Fold Field Cult.
- Glencoe 10' Field Cult.
- Case IH 183 6x30 Danish Cultivator
- JD RM 4 3 Pt. Cultivators
- (5) JD- RM- 6 Row Cultivators
- Ford 2 Row- 3 Pt. Cultivator
- Brillion 15' Cultimulchers
- IH 315- 14' Cultimulcher
- JD 930 12' 3 Pt. Cultimulcher
- Dunham 10' Cultimulcher
- Kewanee 10' Cultimulcher
- JD 10' Cultimulcher
- Dunham 15' Cultipacker w/Transport
- Brillion 14 Cultipacker w/End Transport & Star Wheels
- Brillion 11' Cultipacker
- Brillion 12' Cultipacker
- Chattanooga 12' Circw/foot
- (2) Brillion 8' Cultipacker

## MANY MORE ITEMS NOT LISTED

### MISC. EQUIPMENT

- 1976 JD 4400 Diesel 13' Grain (Will Separate)
- Woods 0121- 10' Offset Mower
- Terrain King TK15 Wing Mower
- (2) JD 327 Baler w/Ejector
- JD 346 Baler w/Ejector
- JD 1240 Plateless 4x Cornplanter
- JD 7000 4x36 Cornplanter
- NH 478 Haybine
- NH 472 Haybine
- IH 990 9' Haybine
- (3) NH 451 Sickle Mower
- (2) Farmco 18x8 Steel Hay Wagons
- JD 1500 3 Pt. Power Drill

- New Holland 1002 Stackliner
- Richardson Side Dump Wagon
- New Loader Buckets In Stock
- JD 3800 Direct Cut Grass Head
- (5) Small Manure Spreaders
- JD 400 Grain Buggy- Coming In
- JD 148 Loader w/3020 Brackets

- Bush Hog Loader To Fit MF35
- Brillion 6' & 8' Packer Seeders
- New Idea 324 2RW Cornpicker
- Duals- 18.4x38, 20.8x38, 16.9x34
- Ford 172 Cu. In. Power Unit
- Cub And Super A Snowblades