

Ford New Holland Adds High-Clearance 'Mudder' Tractors

NEW HOLLAND (Lancaster Co.) — The new Models 5530 and 6530 high-clearance "mudder" Ford tractors from Ford New Holland feature 12x12 shuttle transmissions with three ranges of four synchronized forward speeds each.

Both tractors are available with optional creeper gears that provide

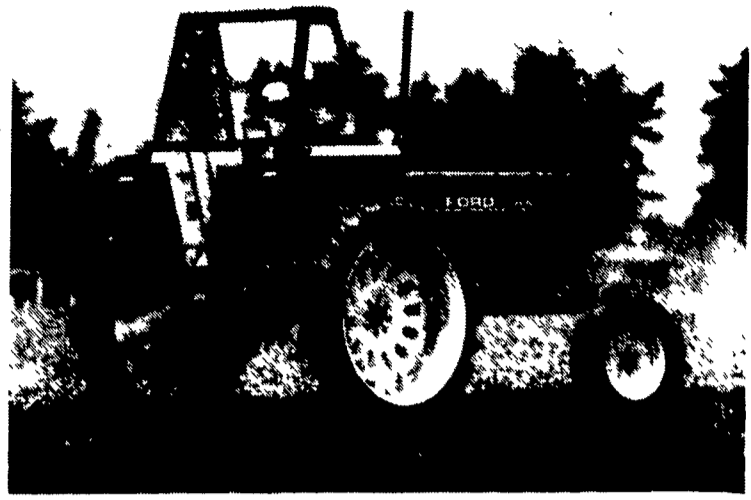
eight additional speeds under 1.5 mph for transplanting, vegetable harvest, and other slower field-work. Both tractors are available in two- or four-wheel-drive.

The Model 5530 is powered by a 220 CID 4-cylinder diesel rated at 62 PTO HP. The 70 PTO HP "6530" is powered by a 4-cylinder 238 CID diesel. Both tractors have

category II 3-point hitches and independent PTO. A convenient mechanical shuttle shift saves time for work requiring frequent reversing. Axle tread width is adjustable.

Their high clearance makes these tractors a natural choice for vegetable producers, said Ford New Holland Product Manager Dave Dell. And, with 4WD they can get working when crops are ready to harvest even if the ground is soft. Their higher clearance and all-wheel drive will also be appreciated by custom fence builders who need to carry post drivers and augers over rough and marshy terrain.

The more economical 2WD option for both models offers high clearance suitable for spraying, cart towing and other jobs where four-wheel drive is not required. Front axle clearance on 2WD models is over 31 inches.



Two new high-clearance "mudder" Ford tractors from Ford New Holland are available in two- or four-wheel-drive. The 62 PTO HP Model 5530 is powered by a 220 CID diesel, and the 70 PTO HP Model 6530 by a 238 CID diesel. Both have 12x12 three-range transmissions with four synchronized gears in each range. Optional creeper gears provide eight additional speeds under 1.5 MPH.

Pa. Association Of Conservation Districts Elects Officers

HARRISBURG (Dauphin Co.) — At its fall Annual Conference, the Pennsylvania Association of Conservation Districts (PACD) elected a new slate of officers for the 1992-1993 fiscal year.

Robert Wagner of Lancaster County will serve as president, leading the statewide, nonprofit organization which represents Pennsylvania's 66 county conservation districts.

Assisting Wagner in providing direction for the organization are the following: first vice president, Bernard Hoffnar of Bedford County; second vice president, Robert Kaufman of Clarion County; treasurer, Harold Grow of Wyoming County; and secretary, Ann Bates of Delaware County. Immediate past president Melvin S. Worley of Adams County was appointed to serve as representative to the National Association of Conservation Districts (NACD) Council.

The new PACD president has been a member of the Lancaster County Conservation District board of directors for 16 years, currently serving as board chairman. Wagner has also been a farmer in the Quarryville area since 1963.

By state law, county conservation districts are generally governed by a seven-member board of directors (under certain circumstances a board may consist of five or of nine members). One member of the board is a representative of the county governing body. The remaining members represent both the agricultural community and the urban or public sector in a ratio representing the make-up of the county: not more than four nor less than two farmer members or public members. The officers and governing board of the PACD are composed of county conservation district board members.

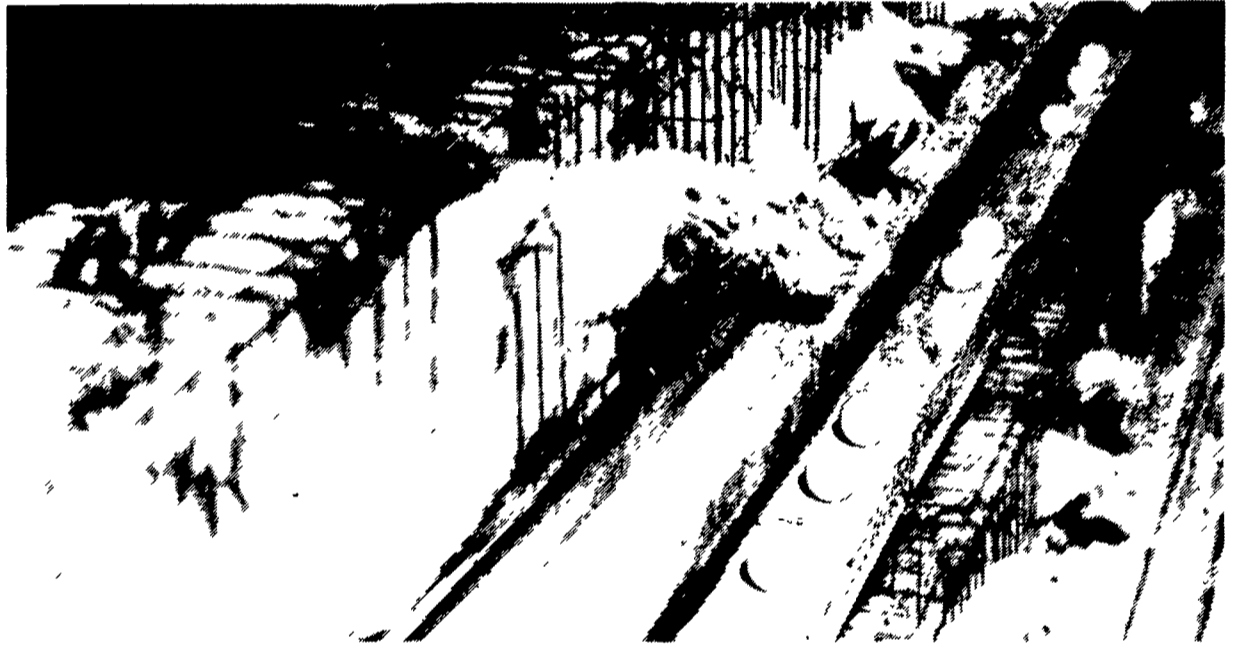
Wagner sees conservation districts as a valuable link between the Pennsylvania Department of Environmental Resources and the local community.

"We act as a liaison, informing farmers, developers and municipalities of regulations and helping them with compliance, as well as carrying their needs and concerns back to DER," he said. "Our challenge for the future is to heighten awareness of the work of conservation districts so that more citizens can avail themselves of our services."

Early conservation districts served the singular purpose of assisting farmers with soil erosion problems. Over the years they have developed a broader range of services, assisting all segments of

the local community in the resolution of soil and water conservation problems. For more information, contact your local conservation district office or the PACD at 225 Pine Street, Harrisburg, PA 17101, (717) 236-1006.

19 More Reasons Why you should buy Big Dutchman from Hershey Equipment



NEW CONSTRUCTION OR REMODEL WORK

1. Big Dutchman and Hershey Equipment is #1 in owner loyalty. More people buy Big Dutchman when they remodel than any other system.
2. Our Profit-tier system adapts to your old building.
3. Re-use your old corners to save money.
4. Big Dutchman's superior suspension system keeps the cages from sagging between stands. Competitive systems sag.
5. Lower maintenance costs. Talk to our customers - Then talk to theirs!
6. Better Performance! This isn't just talk. Ask your feed company to show you records from a Big Dutchman system to compare to a competitive system.
7. Big Dutchman high lip feed trough is designed to reduce spillage into the walkways. Look at a competitor's walkway and measure the thickness of wasted feed.
8. Your old hoppers aren't wore out. Save money and re-use them on your new system.
9. We have our own installation crews to be sure the equipment is properly installed. Competition hires outside crews.
10. Eggs move gently from the birds, to the belts and thru the collector unit. The eggs are not like balls in a bowling alley as in some competitive systems.
11. Incredible! New left hand drive allows feed chain to travel up to 120 F.P.M.
12. Your present gearboxes and motors can be re-used to save money.
13. The Big Dutchman chain feeder gives 2 1/2 times more feeder space than the grind auger.
14. It's a proven fact. Chain feeder systems use less electricity.
15. Big Dutchman has a stronger cage top and front than competitive cages.
16. The sliding door on a Big Dutchman system is easy to open and close and it stays closed.
17. The Big Dutchman collector is the best there is. Don't accept an imitation.
18. Our cage design allows eggs to roll front and out of the cage, not get stepped on and cracked by birds as in competitive cages.
19. Big Dutchman systems provides a bigger percentage of larger eggs for a longer period of time.

HERSHEY

EQUIPMENT CO.

SYCAMORE IND. PARK
255 PLANE TREE DRIVE
LANCASTER, PA 17603
(717) 393-5807

We Take Customer Satisfaction Personally