

# Cattlemen Recognized At Angus Conference

WEST SALEM, Ohio — For the first time, a seedstock producer, commercial producer, and feedlot received Certified Angus Beef Commitment to Excellence awards during the Program's 1992 national conference recently held in Houston, Texas.

Summitcrest Farms of Summitville, Ohio, represented by Sam Johnson, received the Certified Angus Beef Commitment to

Excellence Award for a seedstock producer.

The award is presented to a seedstock producer for long-term commitment to sire testing, making breeding decisions to improve carcass traits, sharing information with those involved in the sire evaluation chain, and communicating with commercial producers, the Certified Angus Beef Program staff, and the American Angus Association.

With 56 years in the cattle business, Summitcrest Farm strives to produce consistent, quality breeding stock for the industry by making breeding decisions based on carcass data. Specific carcass data has been collected for 1,198, or 66.6 percent of Summitcrest Farms' 1,800 steers since 1987. In addition, 25 bulls have data identified based on over 10 head progeny, and three bulls have data identified based on over 100 head progeny. Summitcrest Farms participated in both the 1991 and 1992 Certified Angus Beef Program's feedlot gain and carcass evaluation projects, receiving reserve champion honors in 1991.

Bar S Ranch of Paradise, Kan., represented by Ken Stielow, owner/operator, received the Certified Angus Beef Commitment to Excellence Award for a commercial producer. The award is presented to a commercial producer for working with the purebred industry to evaluate the carcass merit of bulls, keeping excellent records, employing progressive management strategies and communicating with the Certified Angus Beef Program staff, the American Angus Association and feedlots.

Since 1986, Bar S Ranch has been testing bulls for carcass merit by retaining ownership of test

cattle to ensure identity from conception to the packing plant. The organization helps collect carcass data and coordinates feeding and processing information with the supply development division of the Certified Angus Beef Program. This commercial operation has 10- sires in the Program's 1993 sire evaluation program. Bar S Ranch's progressive management strategies include total quality management of vaccination site and branding.

The 37 Cattle Company of Holdrege, Neb., represented by Rich Waller, owner/operator, received the Certified Angus Beef Program Commitment to Excellence Award for a feedlot. The award is presented to a feedlot and manager for keeping identified cattle in groups, retaining feed data and close-out information, properly tagging or identifying cattle and communicating with the Certified Angus Beef Program staff and American Angus Association regarding processing locations and dates.

With a 6,000 head capacity, 37 Cattle Company feeds cattle in contemporary groups and does not mix identified cattle with other cattle. Waller communicates with the supply development division of the Certified Angus Beef Program on a regular basis regarding processing locations and dates and

helps collect carcass data at packing plants. In addition, the organization keeps accurate records of feed data and close-out information for producers. The 37 Cattle Company accurately represents cattle and information in a professional and honest manner to all parties involved.

"The Certified Angus Beef Program is proud of its partnering relationships with these cattlemen as their efforts to increase end product value with ensure continued growth for the Program and the Angus breed," said Louis "Mick" Colvin, executive director of the Certified Angus Beef Program.

The 1992 Certified Angus Beef National Conference brought producers, packers, fabricators, exporters, retailers and food service distributors together for sharing ideas, learning, recognizing achievements and planning for the Program's future.

As the world's leading specification-branded beef program, the Certified Angus Beef Program sold 93-million pounds of Certified Angus Beef product during its 1992 fiscal year. For this same period, 2,587,476 head were identified to meet the program's cattle specifications, and 412,958 of those carcasses were certified as Certified Angus Beef product.

## Western Pa. Vegetable Growers Meeting Set

GREENSBURG (Westmoreland Co.) — The annual Western Pennsylvania Commercial Vegetable Growers Seminar will be held on Monday, December 7, at the Days Inn, Butler, from 8 a.m. to 4 p.m.

Every year, vegetable growers from western Pennsylvania as well as parts of Ohio and West Virginia meet to learn the latest information and products available to help them grow top quality produce.

Speakers from universities and private industry will discuss production practices, marketing, pest management, and other topics. Commercial exhibitors include seed companies, chemical companies, machinery dealers, greenhouse suppliers, and distributors of a wide range of products, including irrigation equipment, for the commercial vegetable grower.

Penn State Extension and commercial suppliers are again co-sponsoring this event.

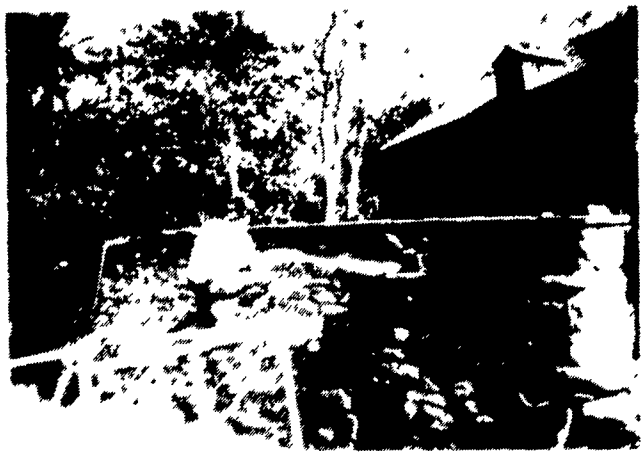
This year's educational ses-

sions will emphasize commercial production of tomatoes and peppers, including talks on irrigation and marketing. Dr. Charles McClurg, vegetable specialist from the University of Maryland, will speak on the topics, "Staked Tomato Culture," and "Variety Recommendations for Tomatoes, Peppers, and Pumpkins."

Speakers from Penn State and private industry will address topics such as "Weed Management for Tomato Production," "Designing an Effective Trickle Irrigation System for Vegetable Crops," and "Disease Management in Tomatoes and Vine Crops."

If you are involved in, or seriously considering commercial vegetable growing, plan to attend the Western Pennsylvania Vegetable Growers Seminar. To register or for more information, contact Penn State Extension, Westmoreland County, Box 250, Greensburg, PA 15601, (412) 837-1402 or any Penn State extension office in western Pennsylvania.

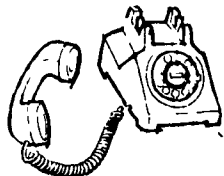
### PRESSURE POINTING



This Is THE ANSWER For A Structurally Sound Wall

- Stronger Than Repointing Methods
- Longer Life Span
- Fast & Economical Installation

So Please Give Us A



WE CAN STRENGTHEN ANY WALL

- Stone Wall Repairs
- Installation & Maintenance of Concrete Bunker Silos
- PreCast Gunite Lined Water or Manure Storage Tanks
- Dam, Reservoir & Spillway Repair
- Slatted Floor Systems
- Silo Repairs

We're The "Concrete Specialists"

**MAR-ALLEN CONCRETE PRODUCTS, INC.**



Gunite Construction • Precast Concrete Products  
Bridge Repair • Tank Repair • Holding Tanks • Installation • Pre-Qualified by PennDot

20 Cocalico Creek Rd.,  
Ephrata, PA 17522  
(717) 859-4921

Two Convenient Locations!

P.O. Box 337  
Ebensburg, PA 15931  
(814) 472-8690  
Ask For Mike

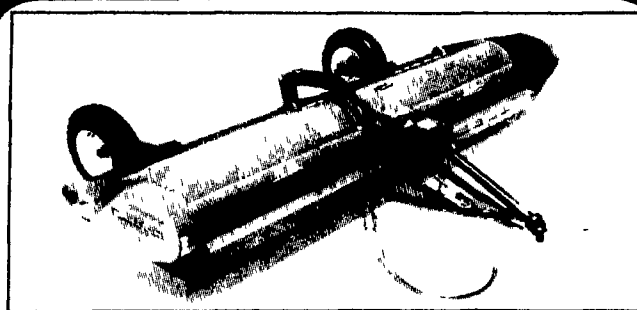
Subsidiary of Seal-Crete Corp.

ROLLING ON...IN THE 90's

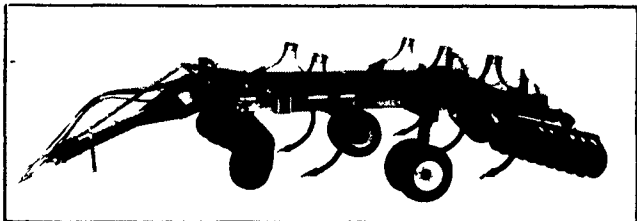


MEETS THE CHALLENGE

When You Buy A Brillion You Get The Best



**BRILLION FLAIL SHREDDERS** keep going when others stop! One of the most important features is that you get the heaviest gearbox on the market with this machine. 12 & 15 foot.



### LANDCOMMANDER

Controls compaction, rough fields, soil erosion & residue management problems.

Adjustable front disc gangs cut the residue. Auto-reset shanks penetrate the soil 8 to 20" to breakup compaction. The rear discs break clods, incorporate residue and level fields. To leave more surface residue and control erosion, raise the gang. Easy manual or hydraulic adjustments change disc cutting depth. Now there's one way to manage surface residue and compaction problems...stop in and we'll talk.



**SOIL BUILDERS** are a primary conservation tool that breaks up plow pan to absorb moisture and blends surface residue into the soil with enough residue left on top to control wind and water erosion. 5-13 Shank.

#### PENNSYLVANIA

Adamstown  
ADAMSTOWN  
EQUIP. INC.

Bechtelsville  
MILLER  
EQUIP. CO.

Berwick  
C.H. RINEHIMER  
& SONS

Carlisle  
GUTSHALLS, INC.

Dover  
GEORGE N.  
GROSS, INC.

Easton  
GEORGE V.  
SEIPLE

Elizabethtown  
MESSICK FARM  
EQUIPMENT CO.

Gettysburg  
YINGLING  
IMPLEMENT

Intercourse  
C.B. HOOBER  
& SON

Lancaster  
LANDIS  
BROTHERS, INC.

Lebanon  
UMBERGER'S  
OF FONTANA

Loyville  
GUTSHALLS, INC.

Maxatawny  
N.H. FLICKER &  
SONS, INC.

Needmore  
CLUGSTON  
FARM EQUIPMENT

New Holland  
A.B.C. GROFF, INC.

Oley  
PIKEVILLE  
EQUIPMENT, INC.

Quarryville  
GRUMELLI FARM  
SERVICE

Tamaqua  
CHARLES  
SNYDER, INC.

Watsontown  
DEERFIELD AG &  
TURF CENTER, INC.

West Grove  
S.G. LEWIS &  
SON, INC.

#### MARYLAND

Rising Sun  
AG INDUSTRIAL  
EQUIPMENT

Frederick  
CERESVILLE FORD  
NEW HOLLAND

#### NEW JERSEY

Bridgeton  
LESLIE FOGG

Columbus  
REED BROTHERS  
EQUIPMENT

Elmer  
POLE TAVERN  
EQUIP.  
SALES CORP.

Fairfield  
CALDWELL  
TRACTOR &  
EQUIPMENT

ROLLING ON...IN THE 90's



MEETS THE CHALLENGE