

State Ag Board Approves Purchase Of 14 Easements

HARRISBURG (Dauphin Co.) — The Pennsylvania Agricultural Land Preservation Board approved 14 easement purchases Wednesday, including the first in Westmoreland County, making that county the 20th to permanently protect farmland under Pennsylvania's farmland protection program.

During the meeting, the board approved more than \$3.5 million for easement purchases, including \$188,665 for Lowell C. and Sally R. Lash's Westmoreland County farm.

"The Lash farm in Sewickley Township is one of many fine farms in Westmoreland County," said State Agriculture Secretary Boyd E. Wolff, who chairs the board. "We're very pleased to have this farm in our program."

A breakdown of the properties - by county, owner, township, acreage, and purchase cost — includes:

- Adams - George Adams Dairy Farm, Partners, Franklin Township, 153 acres, \$231,972; and Mildred L. Musselman, Butler Township, 162 acres, \$235,175.
- Cumberland - Marlin L. and Dorothy Blosser, West Pennsboro Township, 113 acres, \$232,811; Edgar and Judith Heberlig, West Pennsboro Township, 125 acres, \$214,000; and David and Sandra Hukill, Middlesex Township, 71 acres, \$182,933.
- Chester - W.B. Dixon and Allison F. Stroud, Jr., London Grove Township, 141 acres, \$500,000.
- Franklin - J. Nelson and Jean

A. Wengert, Greene Township, 181 acres, \$277,695; and Merle D. and Nancy K. Woodring, St. Thomas Township, 100 acres, \$135,125.

- Lebanon - Anna D. Bomgardner, North Annville Township, 197 acres, \$206,000.
- Lehigh - Gerald I. and Dorothy I. Hunsicker, Lower Macungie Township, 183 acres, \$677,448; Donald L. Fink, Heidelberg Township, 109 acres, \$184,739; and Carl H. Reitz, Heidelberg Township, 69 acres, \$132,023.
- Susquehanna - Paul R. and Kimberly Wells, Bridgewater Township, 184 acres, \$102,400.
- Westmoreland - Lowell C. and Sally R. Lash, Sewickley Township, 106 acres, \$188,665.

Farm Calendar

(Continued from Page A10)

Thursday, December 10

- Ag Issues Forum, Kreider's Restaurant, Manheim, 7:30 a.m.-9 a.m.
- Dairy Production Diseases and Economics Seminar, Farm Show Complex, Harrisburg, 9 a.m.-3 p.m.
- Ag-Service School, Embers (Quality Inn), Carlisle, 9 a.m.-3 p.m.
- Grounds Managers' Winter Seminar, Warrington Motor Lodge, Warrington.
- Lancaster County Poultry Association dinner, Dutch Apple Dinner Theater, Lancaster.
- Soil Nutrient Management Workshop Session 1, West Penn Township Building, Tamaqua,

7 p.m.-9 p.m. and session 2, Dec. 17, 7 p.m.-9 p.m.
Land Preservation Education Meetings, Lemon Drop Lounge north of Ebensburg, 8 a.m.-3:30 p.m.

Friday, December 11

Pesticide Test, Schuylkill County Cooperative Extension Office, 9 a.m.-noon.

Saturday, December 12

National Young Farmers Institute, Des Moines, Iowa.

Sunday, December 13

Monday, December 14

Northwestern Pa. Fruit Dinner Meeting, New Wilmington Grange Hall, 5:30-8:30 p.m.
Land Preservation Education Meeting, East Manchester Township Building, 7:30 p.m.

Tuesday, December 15

Capital Region Ag Chemical Safety Compliance School, Farm Show Complex, Harrisburg, 8:30 a.m.-3 p.m.

Land Preservation Education Meeting, Southeastern Middle School, 7:30 p.m.

Western Pa. Commercial Tree Fruit Seminar, Airport Holiday Inn, Pittsburgh, 8 a.m.-3:15 p.m.

Wednesday, December 16

4-H Learn and Earn For Fun and Profit program, Berkes County Ag Center, 10 a.m.-3 p.m.

Thursday, December 17

Agriculture Issues Forum, Kreider's Restaurant, Manheim, 7:30 a.m.-9 a.m.

Mid-Atlantic Conservation Tillage Conference, Embers Inn and Convention Center, Carlisle.

Are You Getting Tired Of Repairing Your Cage System?

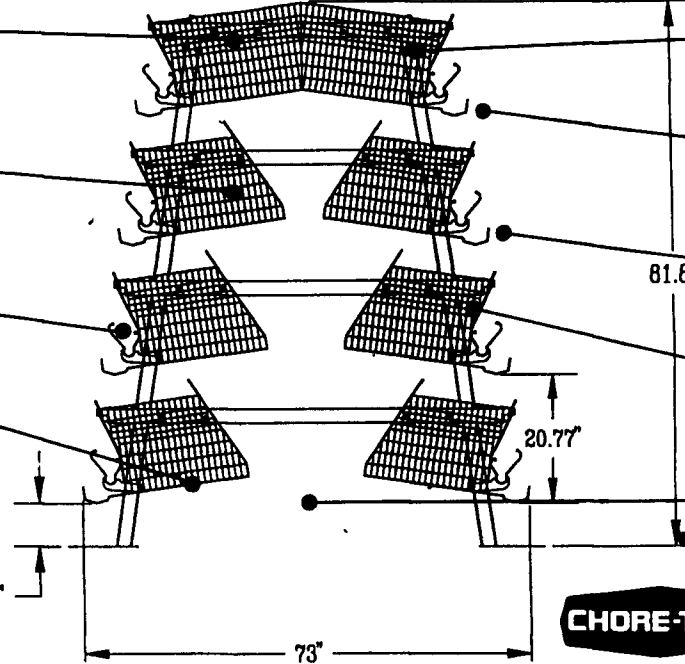
You Can Have More Birds, Better Performance, More Income And Less Maintenance With A New Chore-Time Duratrim

You get more room in our top cage for extra birds

Note the extra wire in partitions, backs and tops for added strength

ULTRAFLO® goes 80 feet per minute and has a 5 year warranty

Special wire on cage floors is welded before being galvanized. This gives stronger welds and better coating, one more reason why Chore-Time outlasts other systems



Ten year warranty on cages. Call or send for a copy

Egg tray is out farther to prevent egg jam-ups

This extra high lip on the egg tray saves eggs

Available with 24"x20" cages or 16"x20" cages

Get 33% more birds because it is only 73" wide



Remodel with Chore-Time and you can have more birds, better performance and less maintenance. Chore-Time's 4 tier, 20 inch deep Duratrim is the same width as 3 tier dropping board systems and 4 tier reverse cages. Go from 60,000 birds to 80,000 birds.

ULTRAFLO® saves feed. Birds can't pick over feed while the feeder is running. When they eat the auger stops birds from piling feed and flinging feed. **WHY NOT CHECK OUT THE FACTS FOR YOURSELF?** Contact us now - or ask any producer who owns ULTRAFLO®

Chore-Time's Popular ULTRAFLO® Cage Feeding System Is Now Even More Outstanding!

We've developed and tested the second generation of ULTRAFLO® feeders and named it the ULTRAFLO® II.

ULTRAFLO® II offers you even greater reliability, durability, and outstanding feed-saving performance — up to 1 gram of feed per bird per day — over the original ULTRAFLO®. And even the original ULTRAFLO® was beating our competitors in feed savings!

So, join the cage feeding leader. Contact us today. Find out how Chore-Time and ULTRAFLO® II can help you be a leader, too!

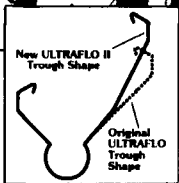


EASY AUGER CONNECTOR.

Allows fast and simple installation, also quick and easy repair of auger if ever necessary. Auger and trough are both warranted 5 full years. Chain feeders are not



New Shape
The difference is the shape of the feeder's trough (at right) ULTRAFLO® II's higher trough lip reduces feed waste by keeping it in the trough and not on the floor or in the pit.



Northeast Agri Systems is Pennsylvania's Authorized **CHORE-TIME** Master Distributor



Northeast Agri Systems, Inc.

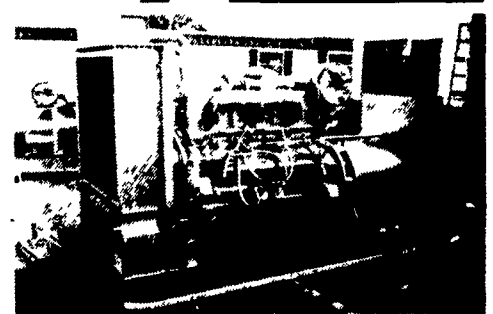
FLYWAY BUSINESS PARK
139 A West Airport Rd.
Lititz, PA 17543

717-569-2702
TOLL FREE CUSTOMER SERVICE NUMBER:
1-800-673-2580



IF YOU ARE THINKING OF REMODELING OR FOR FREE ESTIMATES CALL OUR TOLL-FREE CUSTOMER SERVICE NUMBER: 1-800-673-2580

MARTIN MACHINERY



GENERATORS

Sales ★ Service ★ Rentals
★ Complete Generator Systems
★ PTO ★ Portables ★ 2-1600 KW
"We Service It If You Have It And Sell It If You Need It"

34 W. Mohler Church Rd.
Ephrata, PA 17522

Tel: 717-738-0300
Fax: 717-738-4329