

'90 Ford XL F250 4x4, 351 FI, auto, PS, PB, AM-FM, dual tanks, lock-out hubs, 8,600 GVW, 17,000 miles, excellent condition. \$13,500. 717-733-2873

FOR SALE: 1978 Peterbilt cabover, less than 100,000 since overhaul, 15-speed, 3406 Cat, all records available, one-owner Call (717)626-2153 between 9am-3pm.

Good 1978 1750 International Loadstar, also, 20,000 pound lift axle. 717-442-8223.

International 3/4 ton 4X4, Pickup w/Pontiac 400 V-8 engine plus turbo-hydro transmission, 8' Western snowplow w/hydraulic angling Custom built for snowplowing \$1100 (717)386-3727

MF Loader Unit, 1.5 yard bucket, all hydraulics included, ready to clip onto tractor, \$650 OBO 215/626-2555

Omaha 8X16 Truck Body, Steel Floor, Call after 6PM 717-648-2078

One tandem axle Chevy spreader truck w/stainless steel body, brand new chain, excellent condition 717-463-3701.

SALE OR TRADE FOR FLAT TRAILER, 4 horse gooseneck trailer w/ dressing room, good condition 215/932-2767.

Trailer Hitches
Brake Controllers
Pintle Hooks
and Much More!
* Free Catalog *
Free UPS/Credit Cards
Weaver Distributing
1-800-Weaver-D

'89 Ford F350 crew cab, dual wheels, 7.3 diesel, 5 speed overdrive, Centurion package w/all options, gooseneck and custom bumper hitch, garage kept, excellent shape 908-322-4038

42' BoCat Trailer Well Maintained w/Chain Floor, \$14,500
Cabover International w/400 Cummins, 13 Speed Transmission \$4500
717-597-7963 Ask for Richard

(2) Grain Trucks Your Choice, Haul 550 Bushel Capacity, GMC Gas 427, International Cummins Excellent Condition 717-665-5617 Leave Message

E-TOWN DODGE
1989 W150 4x4 Short Bed, Like New
1989 Chevy C-1500, 27,000 Miles
1992 B-350 Maxi Wagon, 15 Passenger, 20,000 Miles
(8) 1993 Diesels In Stock
CALL MILTON HESS
717-367-6644
717-653-6667
Elizabethtown, PA



1989 Mits. FH w/14' Flatbed, 4.9 6 Cyl. Turbo Diesel, 5 Speed, 17,000 GVW, 50,000 Miles.



1989 Ford Ext. Aerostar Cargo, V6, ATO, PS, PB, AC, 50,000 Mi. Stk #1488.



1990 Chevy P30 Dual Wheel, 16' Alum. Roll-Up Door, 10,000 GVW, 350, AT, PS, PB, Only 14,000 Miles



1989 Ford E350 Super Cargo, 351 V8, ATO, PS, PB, AC, 38,000 Miles

Four Way Auto Sales

770 West Main St., New Holland, PA 17557

717-354-3199

USED TRUCKS



1989 Chev Ext-Cab, 4x4, 8600 GVW, Scottdale, 350 FI, Auto, PS, PB, AC, AM & FM Stereo Cass., Delay Wipers, Rear Sliding Window

\$12,900.00



1989 Ford F-250 4x4, XL, 8600 GVW, 351 FI, Auto, PS, PB, AC, Tilt Wheel, Cruise, Rear Sliding Window, Dual Tank, 45,000 Miles

\$11,900.00



1990 Ford F-250 Heavy Duty, 351 FI, Auto, w/OD, PS, PB, AM&FM, Dr. Green, 52,000 Miles.

\$10,500.00



1988 Ford F-350 Dual Wheels, Cab & Chassis, 351 FI, 5 Speed, PS, PB, AM & FM, 1 Owner, 52,000 Miles.

\$8,900

Financing Available

MARTIN'S AUTO SALES

1025 W. Main St., New Holland, PA 17557

(717) 656-6621

JONES BEST BUY USED TRUCKS

JONES
PONTIAC • HONDA
GMC TRUCK
1335 Manheim Pike, Lancaster
717-394-0711



'90 PLYMOUTH VOYAGER

V6, AT, AC #7193
Was \$14,995

NOW \$12,750



'89 GMC CREWCAB DUALY

454, AT, AC, Buckets, Trailer Pkg. #7192
Was \$14,995

NOW \$11,495



'90 CHEVY SILVERADO 4x4

AT, AC, Cruise, Tilt, Cap, Loaded #7183
Was \$17,900

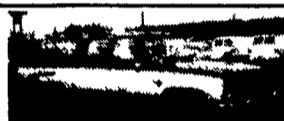
NOW \$15,700



'91 GMC RALLY STX VAN

Only 8,000 Mi., Front & Rear Air, Trailer Pkg., Rear Bed #6856
Was \$25,500

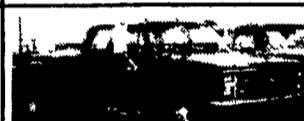
NOW \$17,200



'84 CHEVY SUBURBAN

Silverado, 350, AT, AC, 9 Pass., PW, PL, Trailer Pkg. #7178
Was \$7,900

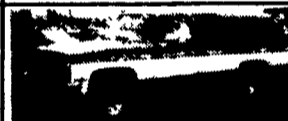
NOW \$5,300



'87 CHEVY CREWCAB DUALY

Silverado, 454, 4 Spd., AC, Only 47,000 Mi. #7101
Was \$13,750

NOW \$10,800



'91 GMC SUBURBAN 4X4

Sierra Classic, 350, AT, Front & Rear Air, Rear Heat, Trailer Pkg., Like New, 17,000 Mi. #7116
Was \$23,900

NOW \$21,700



'88 CHEVY 3/4 TON

Silverado, AT, AC, Cruise, Tilt, Loaded #7165
Was \$13,995

NOW \$12,150



'91 FORD EXPLORER EDDIE BAUER

Loaded!! #7198
Was \$21,995

NOW \$19,950



'89 CHEVY EXT. CAB 3/4 TON 4x4

8 Ft. Bed, AT, AC, Silverado, #7190
Was \$16,950

NOW \$15,100



'92 GMC 1 TON EXTENDED CARGO VAN

350, AT, AC, PL, Cruise, Tilt, #7206
Was \$19,300

NOW \$14,500



'90 CHEVY K-BLAZER 4x4

AT, AC, Cruise, Tilt, Loaded, #7184
Was \$18,100

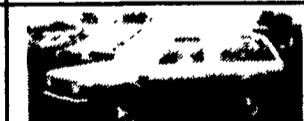
NOW \$16,100



'89 CHEVY CREW CAB DUALY 4x4

454, AT, AC, Great Cond., #7189
Was \$16,995

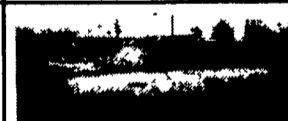
NOW \$13,800



'89 GMC JIMMY 4x4

Sierra Classic, 4.3L V6, AT, AC, Loaded, Customized Pkg. #7125
Was \$14,995

NOW \$12,900



'87 DODGE RAMCHARGER

V8, AT, AC #7197
Was \$6,995

NOW \$5,850



'86 GMC 1 TON CREWCAB 4x4

4 Spd, AC, Cruise, Tilt, 49,000 Mi., #7157
Was \$15,995

NOW \$12,430



'85 CHEVY 3/4 TON SUBURBAN

454, Trailer, Pkg., Front & Rear Air, 9 Pass., Almost Like New, #7140
Was \$8,995

NOW \$7,475



'89 GMC 1 TON 4x4

454 V8, AT, Fiberglass Cap, #7155
Was \$10,995

NOW \$9,750



'86 CHEVY SCOTTSDALE

V8, AT, PS, PB, Cap, #7199
Was \$6,995

NOW \$4,750



'92 GMC 3/4 TON 4x4

Sierra Classic, AT, AC, PW, PL, 900 Mi. #7113
Was \$25,000

NOW \$23,300

Prices based on straight sale. Tax & tags extra.