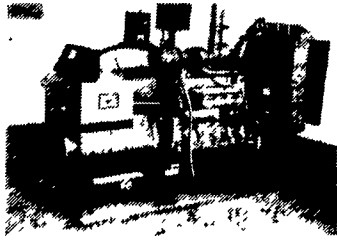


32 MISCELLANEOUS

12x16x2 red patio bricks, cost \$4.00, sale price \$2.00 215-754-6298

Three cylinder Deutz engine, almost new, \$3,400
Four cylinder Deutz engine, very good shape, \$3,000 Both are mounted on a frame, make your own power unit (814)447-3769

POWER SYSTEMS ELECTRIC, INC.



SPECIALIZING IN GENERATOR SALES, SERVICE AND RENTALS (717) 933-5617

- 220 KW Cummins Low Hrs.
- 100 KW Allis Low Hrs.
- 80 KW P-S-E (New)
- 45 KW Maxi Diesel
- 30 KW Waukeshau L-P-G
- 25 KW Diesel (New)
- 20 KW Kohler L-P-G
- 15 KW Onan L-P-G

Financing for business including many types of financial guarantees Mr Read FAX 717-354-6965

Wanted Standing Timber
Oak - Ash - Poplar in Bucks - Berks - Lehigh - Northampton Montgomery Counties And All New Jersey Veneer or Sawlogs
TOP PRICES PAID
215-579-1975

PAINTED STEEL ROOFING & SIDING
• Galvanized/Galvalume
• 29/26 Gauge
• 3 Major Brands Available
• Large Stock Trim & Sheet
• 5V Crimp Metal
AS LOW AS \$32.00 per/sq.
Conestoga Building Supply
New Holland, PA 17557
717-354-2613 or 1-800-544-9464

E&R PLUMBING
Aermotor Water Systems
399 North Shirk Road
New Holland, PA 17557
(717) 354-9320
• 500 Gal. Pressure Tanks\$215
Pressure Tanks - 1000, 1200, 1750, 1800, 2400, 2600, 2650, 12,000
Call For Price
• Stauffer Hidden View
Air Operated Water Pumps
• Used Aermotor Windmills

33 RECREATIONAL VEHICLES

'81 Yamaha motorcycle 650 cc, 3200 original miles, \$700 Fox mini-bike, runs good, \$70 (800)525-6514.

FOR SALE (2) 1990 Yamaha snow mobiles, (1) Exceter w/145 miles, (1) Phaser w/120 miles, (1) snow mobile trailer. 717-463-3701

Jeep CJ3 1963, Very Low Mileage, Used on Farm Only Last 25Yrs \$1000 OBO 301-607-6220.

34 AUTOS

1974 Right Hand Mail Jeep, low milage, \$750 Dauphin Co 717/362-3578.

1982 Chevy Malibu Classic Wagon, No Rust, Best Offer; 1981 Dodge Maxi-Van, Runs Good, Best Offer 215-445-6049.

1988 Chevy Bonaventure van 12 passenger, 350 engine, front/rear air heat, nice condition, \$7,600. (315)549-7664

90 Olds Calais - 4 Dr, Blue, Quad 4 Aluminum Wheels Loaded, 10,000 Miles **\$8,300**

89 Escort, 2 Door, Automatic, AC, 18,000 Miles **\$4,450**

90 Buick Skylark, Blue, 22,000 Miles, 4 Dr. **\$6,100**

84 Honda Accord 2 Door **\$2,800**

90 Toyota Corolla, 4 Door, 20,000 Miles **\$8,900**

86 F-150, 4 Spd., **\$3,900**

90 Plymouth Horizon 4 Door, 13,000 Miles, Stick **\$4,500**

87 Plymouth Caravelle SE, 41,000 Miles, 4 Door **\$3,600**

87 Honda Civic DX, 3 Door, Automatic, A/C, 86,000 Miles **\$3,400**

91 Honda Civic DX, 4 Door, Automatic, A/C, 28,000 Miles **\$9,400**

Burkholders Auto Danville, PA 717-437-3848

35 TRUCKS & TRAILERS

'14 construction dump box, including pump, fair condition. Asking \$1700 OBO. 717-273-6309 Eves

14' Grain Body w/12 ton twin cylinder hoist, asking \$775. 717/786-1119.

14' Parkhurst grain dump, 42" sides and hoist, PTO for Ford truck (814)793-9574

1961 International B-18C grain truck, lift axle, 14 dump, 5' metal sides, 5-speed, 2-speed rear, 392 V8, \$2500 215-286-9708

1962 Ford 350 Truck w/12 Bed, Hoist and Stock Rack Engine Fair, Best Offer 814-667-3594

1969 4-WD FC 170 Willys Flatbed Jeep Truck, Motor and Transmission Good, Body Needs Work, Has 7.5' Elec. Lift, Myers Plow Like New, Call After 6PM. 717-833-5007

1970 Diamond-Reo cattle truck, 20' bed, 26,000 GVW, excellent rubber, runs great, new inspection, \$2,500 OBO. (717)423-6758.

1971 Mack R model 10 wheel dump, 20' 600 bushel grain body, 237 engine, 5 speed Mack trans, good condition, \$6900 OBO 215/626-2555

1972 Chevy Truck, C60 series, cab chassis, 5-2speed, 366 engine, \$600 717/859-3810

1973 International 1800 Loadstar, cab & chassis, 10' cab to axle, air brakes, 392, 5+2, \$1500 717/292-3030.

1973 L9000, rebuilt 270 turbo Cummins, rebuilt front end, 10 speed Road Ranger, NEW air PTO, 11R22 tires; 25' aluminum hill dump trailer w/grain chute All w/excellent tires, brakes, extra parts, tarps, 2-35' drop deck Strick van trailers All for \$15,000 Columbia County 717-683-6191

1974 IH Transtar II S/A tractor w/45' T/A dry van trailer Good shape good appearance, would make nice Christmas tree hauler Asking \$5,000 for outfit Col Co 717-784-0911

24' Aluminum Dump Trailer, 54" sides, very good tires, brakes & body condition, \$3500 OBO 215/298-2870 days, 215/298-2596 evenings.

(2) Int 1978 gas, PS, AB, 3000 gal. Allied Aluminum tanks, pump, hose, meter, 2-way radio; 1978 Ford 2200 gal steel tank, PS \$2750/ea OBO 215-268-3900.

'62 GMC stake body truck, 305 V-8, runs good, \$995 (717)266-6015.

'69 Dump truck, White 9000, single axle, double pump hoist, 230 Cummins, 10 spd trans., \$3000 OBO 301/596-9700

73-Ford F-600 Flatbed Truck with Deck Over Cab for Hauling Hay 2-Speed Rear 21,000 Gross (717)423-6062

'74 Chevy C-65, 16' dump, 366 engine, 5+2, HD, tagged at 40,000 lbs, nice, \$5,000 (301)898-7426.

'79 Chevy 4x4 Silverado pickup, topper, class III hitch, electric brakes, new transmission and tires, good condition (215)488-6903

80&81 Mack Tractors, 318&350 Detroit Motors, Fuller 13spd. Transmission, Flat & Van Trailers; Pete Air-ride, Roto-phase; 38Int Rear-ends; Electric Motors, Starters & Switches Clearfield 814-672-3196.

81 International S Model, Diesel, DT466, 5speed, 2-speed rear, 2 car rolled \$8500 717-273-7474.

'87 Chevy C10, 1/2 ton, 4x4, 305 FI, auto, PB, PS, AM-FM, 6,250 GVW, rally whls., red & white, excellent condition, \$8,675. 717-733-2873

'88 Chevy C30 dually, 4x4 pickup, 350 FI, auto, PB, PS, AM-FM, dual tanks, 10,000 GVW, 54,000 miles, blue, excellent condition, \$10,900. 717-733-2873

'88 Dodge 150, short whl. base, 8 passenger window van, 318 auto, PB, PS, air, AM-FM cassette, 2 tone blue, 46,000 miles, excellent condition, \$8,975. 717-733-2873

'88 Ford F150 Super Cab, 300 EFI, 5 spd., PS, PB, AM-FM, dual tanks, 6,250 GVW, 45,000 miles, dark blue, excellent condition, \$8,350. 717-733-2873

'89 Dodge D250, 1/2 ton, 4x4, 318 EFI, auto, PB, PS, air, AM-FM cassette, 6,900 GVW, dark blue, \$8,975. 717-733-2873

'89 Ford E250 extended cargo van, 300 EFI, auto, PB, PS, air, AM-FM, 42,000 miles, charcoal, excellent condition, \$9,175. 717-733-2873

'89 Ford F250 HD w/8' Morrison utility body, 351 5 spd., PS, PB, AM-FM, dual tanks, 8,600 GVW, high miles, \$5,900. 717-733-2873

'89 Ford XL F150, 4x4, 300 EFI, 5 spd., PS, PB, AM-FM cassette stereo, maroon & silver, 39,000 miles, excellent condition, \$9,600. 717-733-2873

'89 Mercedes 1419 w/22' reefer/thermoking w/ electric standby Low mileage. \$21,500. 8am to 5pm (717)354-4424.

'90 Chevy Beauville Extended 11 passenger Van, 350 FI, auto, PB, PS, PW, PDL, cruise, tilt, dual air, AM-FM cassette, 28,000 miles, charcoal, excellent condition, \$13,500. 717-733-2873

1975 Mack U Model tandem axle trailer, 237 engine, 5 speed Mack trans, connected to 1971 Trailmobile trailer, 40' tandem axle w/ center mounted H model Prentice loader, pulp wood grapple and pony motor, fair condition, tractor & trailer together \$6500 OBO. 215/626-2555.

1975 Mack U Model tractor, single axle, 250hp Mack engine w/10 speed trans, not running, good for parts, \$650 OBO. 215/626-2555

1978 Chevy C65 cab and chassis. 33,000 GVW. Air brakes. 427 V-8. 5+2. Tilt front end. New paint. Good condition, \$4,000 (717)753-3210.

1978 Ford 7000 Truck, 35000 GVW, Hydraulic Brakes, 328 CAT Diesel, Good Condition. \$4200 717-776-7725.

1978 Ford LN7000, 6 wheel dump, 3208 Cat engine, Allison 4 speed automatic, PS, air brakes, very good condition. Must Sell, Best Offer 215/853-3788.

1978 GMC Sierra 6000, 366 4-barrel, 5 speed, many new parts, 48,000 original miles, PTO, 5th wheel, large tool box, carrier rack, winch; w/40' tri-axle drop deck and 26' tri-axle Beaver tail w/winch. Trailers all for \$10,000. Columbia County 717-683-6191.

1980 Ford F-700 Dump Airbrakes \$8900; 1968 Ford Tilt-Cab Brush Chipper Dump \$1500, 3-Ton Tag-A-Long \$900; 6-Ton Tag-A-Long \$1200 609-466-2953

1981 Ford 800, 429 gas, 32,000 GVW, 5+2, air brakes, PS; 1979 Ford 800, 429 gas, 32,000 GVW, 5+2, PS, air brakes. 301-877-9889.

1981 Ford 8000, new 3208 Cat, 10 speed Roadranger transmission, new paint, 18' aluminum dump w/feed blower, 54,000 GVW. Best offer. (607)359-2810.

1987 Mack 24' van w/ liftgate, 29,800 GVW, \$12,500. Curry Supply Co., Curryville, PA. 1-800-345-2829

1989 Ford Super duty, 76,000 miles w/12' Eby cattle body, like new, \$10,500 (717)349-2771 after 8 pm

1991 Aluminum Eby trailer, 14' long, 6' high Can be used for all types of farm animals 717/235-5467 after 7pm

1974 Mack F700 day cab, cab only, \$500 OBO. 717-273-6309 Eves

20' Flatbed w/power lift gate, needs floor, \$300 717/292-3030

FALL CLEARANCE SALE ON NEW TRAILERS IN STOCK

	Reg. Price	Sale Price
12' Stock	\$3053	\$2600
16' Stock	\$3495	\$3000
12' Horse & Stock Combo	\$3520	\$3195
16' Stock	\$4185	\$3700
10' Horse Trailer	\$4575	\$4000

FRANK PIERCE (717) 949-3246 After 6 PM

IN STOCK AT HOSTETLER'S TRUCK BODIES

- 8' Knaphelde Plus 50 Service Body, Tread-plate Bumper, Recessed Lights Brand New Demo Price\$1,750
- 9' Dual Wheel Gooseneck Body With Side Tool Boxes, Recessed Lights, Rear Bumper\$1,900
- 16' Scott Multi Purpose Dump Body, Hydraulic High Lift Tailgate, 62" High Sides, With Hoist, Installed\$8,295
- 16' Aluminum Grain Body, 48" High Sides, Swing Open Tailgate With Grain Chute\$5,100

TRUCKS

- 1973 International, 18' Flatbed Dump, V8 Gas, 23000 GVW\$4,295
- 1976 Ford F700, 10' Dump Body, V8 Gas, 23000 GVW\$3,995
- 1981 International, 20000# GVW, V8 Gas, 4&2 Speed, New 14' Knaphelde Grain Body and Hoist\$8,995

USED TRAILERS

- 4'x6' Utility Trailer.....\$200
- 8'x16' Single Axle Flatbed Trailer.....\$500
- 8'x14' 2 Axle Deck Over Trailer, Removable Sides\$1,995
- 8'x18' 6 Ton Deck Over, Beaver Tail and Ramps.....\$1,795
- 2 Horse King Bumper Pull Trailer.....\$1,495
- 2 Horse Shoop Bumper Pull Walk Through.....\$2,595
- 2 Horse Gore Gooseneck Horse Trailer.....\$2,595

NEW LIVESTOCK AND HORSE TRAILERS

- 2 Horse Bumper Pull, All The Padding And Matting, Fiberglass Roof, Tack and Manger, Beautiful Trailer\$5,150
- 6'x16' Bumper Pull Livestock Trailer, 7000 GVW, Electric Brakes.....\$3,200
- 6'8"x20' Gooseneck Livestock Trailer, 6000# Axles, No Inner Fender Wells, Real Worker.....\$5,495
- 6'8"x20' Gooseneck Livestock Trailer, 5000# Axles, No Inner Fender Wells, Real Worker.....\$5,495
- 6'x20' Gooseneck Livestock Trailer, Fiberglass Roof, Radial Tires, 6000# Axles, A Good Looking Hard Working Trailer.....\$5,995

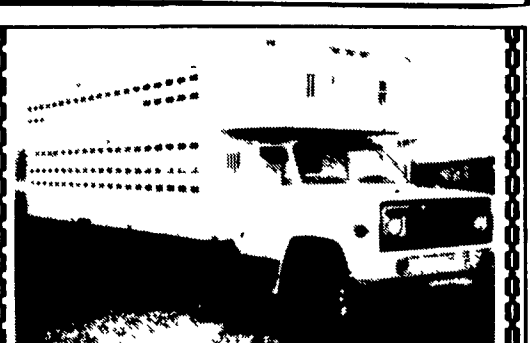
Lots of Other Things in Stock

Call For More Information
Hostetler Truck Bodies & Trailers
Rt. 322 Milroy, PA 17063
(717) 667-3921



TURN YOUR PICKUP INTO A DUMP TRUCK IN LESS THAN ONE HOUR.

Call for Free Catalog FAX: (215) 348-8041



1978 GMC Gas, w/5 Speed, 2 Speed Rears, 21 Ft. Eby Double Deck Cattle Body Call For Details 1-800-292-4752

HORSE STOCK UTILITY
Financing Available All '92 Reduced

SPECIALS:

	Retail	Reduced
Moritz '92 14' Bp Red Pa set-up	\$3050	\$2750
Custom Fab '92 12' Bp Pa set-up (1) Grey (1) Navy	\$3000	\$2850
Ponderosa '92 '92 16' Gn Pa set-up lined 6000# axle	\$3900	\$3700
Utility '92 16' Bp Pa set-up mesh gate Red	\$1795	\$1500
Utility '92 20' Gn Pa. set-up 6000# axles 16" tire	\$3,000	\$2500
EIPaso '92 16' Bp Pa. set-up Gray	\$2850	\$2650
Ponderosa '92 12' Bp Pa set-up Red torsion axles	\$2650	\$2450
Apache '92 16' Gn 6'8" wide lined Pa. Inspected, Navy	\$4200	\$3900
Other trailers '93 in stock Used 20x7x7 Gn heavy axles, new floor and paint, Red		\$2000
2-Horse bumper \$550 and up		\$2000
3-Horse Gn with large Dress room Shoop '72		\$2000
Stock Bumper		\$700 and up
Chief '81 Bp 2-Horse enclosed w/Dress room		\$2000
Temp tags, Notary, Hitches and Trailer parts available		

Fisher Trailer Sales RD #2 McVeytown, Pa. (717) 242-0941 Strodes Mills Middle Rd.