

Oklahoma City Feeder Cattle

Oklahoma City, Okla.

Thursday, November 12, 1992

WEEKLY CATTLE SUMMARY: Compared to last week: Yearling steers and heifers firm to \$2.00 higher. Yearling demand very good following last week's substantial movement from feedlots. Calves steady to \$2.00 lower than last week's major advance. Demand good for thin calves, fair for fleshy unweaned calves. Quality of calves and yearlings improved with many average through attractive cattle offered. Calf consist changed from past two weeks with much larger percentage of unweaned calves in this weeks supply. Weigh-ups improved from buyers standpoint, mostly average. Central and Eastern Oklahoma receiving substantial rainfall. Western Oklahoma wheat pastures still in dire need of moisture but chances good later this week for storms. Slaughter cows steady to \$.50 higher. Slaughter bulls steady. Slaughter cattle demand moderate. Large cow run this week with 1,039 head selling. Replacement, stocker, and feeder cow buyers aggressive and taking largest percentage of cows. Receipts this week 11,875; last week 7,992; last year 13,266. Supply consisted of 40% yearlings and calves over 600 lbs.; 51% calves; 9% cows and bulls. Bulk prices follow:

OKLAHOMA CITY 10,850. 44% yearlings. Steers: Medium and Large Frame 1, 300-350 lbs. 104.00-116.75; 350-425 lbs. 102.25-109.75; 425-500 lbs. 93.50-100.00; 500-550 lbs. 88.75-96.00; 550-600 lbs. 83.50-90.00; 600-700 lbs. even mix of calves and yrs 82.25-88.25; 700-800 lbs. 83.00-87.00; 800-850 lbs. 82.00-86.00; 850-900 lbs. 79.50-81.50. HOLSTEINS: 325-500 lbs. 78.75-84.00; 575-650 lbs. 72.00-76.75; 775-875 lbs. 65.75-68.00. Heifers: Med and Lr Fr 1, 300-400 lbs.

90.00-98.50; 400-500 lbs. 82.75-89.00; 500-600 lbs. 77.50-85.75; 600-700 lbs. 79.50-83.75; 700-800 lbs. 77.75-81.00.

Replacement Cows: Pre-tested for Bangs, pregnancy, and age Medium and Large Frame average to high quality; 1-5 year old 700-1050 lbs. 4-7 months bred 67.00-72.50/cwt. 5-9 year old 825-1125 lbs. 4-7 months bred 56.50-65.00/cwt. 9-10+ yr old 900-1000 lbs. 3-6 months bred 47.00-53.00/cwt.

Replacement Heifers: Medium and Large Frame high quality black baldy and red neck heifers, one brand; bred to Angus bulls. 1-2 year old 700-825 lbs. bred 5-7 months 710.00-790.00/head. bred 4-5 months 685.00-735.00/head.

Direct Feeder Cattle: Trade very slow. Feeder steers steady. Heifers untested. Supplies of yearlings very light. Buyers expressed limited interest and demand for feeder cattle. Demand for calves also light as wheat pastures were in mostly poor condition.

OKLAHOMA DIRECT 1,600. 87% yearlings. F.O.B. ranches, current delivery. Steers: Medium and Large frame 1, 500 lbs. 87.00; 650 lbs. 84.00; 750 lbs. 82.50-84.00; 800 lbs. 82.00. Med and Lr fr mixed 1-2, 750 lbs. 81.50. Heifers: Med and Lr fr 1, 500 lbs. 81.00; 725 lbs. 79.00.

Westminster Livestock

Hagerstown, Md.

Nov. 10, 1992

Report supplied by auction

SLAUGHTER COWS: 104 HEAD, 1.00 HIGHER. UTILITY 46.00-50.00; HIGH DRESSING BEEF TYPE 50.00-55.00; CANNERS 42.00-46.00; SHELLY 42.00 DOWN.

BULLS: YG#2 1100-1800 LBS. 53.00-59.50; LOW DRESSING 48.00-52.00.

FED STEERS: HIGH CHOICE 1000-1100 LBS. 75.00-76.00; SELECT

1200 LBS. TO 68.50; HIGH CHOICE HOLSTEINS 1100-1400 LBS. TO 69.25; STANDARD 55.00-61.00.

FED HEIFERS: 1 HIGH CHOICE LIMOUSIN 1100 LBS. AT 75.25; LOW CHOICE 1200 LBS. 67.00-69.75; FEW 1400-1500 LBS. 63.00-67.00.

VEAL CALVES: LOW CHOICE 200-300 LBS. 80.00-87.00; CULLS 50-100 LBS. 45.00-55.00; WEAK/ROUGH 45.00 DOWN.

FARM CALVES: HOLSTEIN BULLS, PRICES 20.00 LOWER. #1 90-120 LBS. 95.00-115.00; 80-90 LBS. 65.00-95.00; HOLSTEIN HEIFERS, FEW OFFERED. BUTCHER HOGS: 1.00-2.00 HIGHER. US#1&3 215-260 LBS. 38.00-39.75; US#2&3 37.00-38.00; 1 LOT 288 LBS. AT 36.25.

SOWS: 300-700 LBS. 32.00-35.00; THIN 28.00-31.00.

BOARS: 400-700 LBS. 27.00-28.00. STOCK CATTLE: 363 HEAD, SELECTIVE BIDDING.

STEERS: MEDIUM AND LARGE FRAME 300-500 LBS. 70.00-80.00; 500-700 LBS. 72.00-82.00; 700-800 LBS. 64.00-76.00; 800-1050 LBS. 62.00-74.00.

HEIFERS: 300-500 LBS. 60.00-70.00. SEVERAL TO 75.00; 500-700 LBS. 60.00-72.00; 15 HEAD 76.00-80.00; 700-900 LBS. 57.00-65.00.

BULLS: 300-500 LBS. 69.00-81.00; 500-700 LBS. 65.00-75.00; 700-800 LBS. 58.00-65.00.

LAMBS: 80 HEAD. CHOICE 100-120 LBS. 48.00-55.00; 120-130 LBS. 45.00-48.00; 80-100 LBS. 60.00-72.00. SHEEP: 22.00-35.00.

GOATS: LARGE 55.00-65.00; MEDIUM 30.00-50.00; SMALL 15.00-30.00.

PIGS AND SHOATS: BY THE HEAD, 20-35 LBS. 9.00-18.00; 40-50 LBS. 15.00-29.00; 50-60 LBS. 25.00-28.00; 1 LOT 90 LBS. AT 34.00.

STOCK BOARS: 200-260 LBS.

33.00-35.00; 275-350 LBS. 27.00-29.00.

THE FEEDER CATTLE RUNS ARE HEAVY EVERYWHERE. BUYERS WILL PAY A GOOD PRICE FOR THE RIGHT KIND OF CATTLE, BUT THE LESS DESIRABLE KINDS ARE DISCOUNTED MORE NOW THAQT THERE ARE PLENTY TO PICK FROM. ITS PAYS TO RAISE THE RIGHT KIND.

NEXT STATE GRADED FEEDER PIG SALE FRI., NOV. 20, 1:30 P.M.

Hackettstown Poultry & Egg

Hackettstown, N.J.

Tuesday, Nov. 10, 1992

Report Supplied by Auction

HEAVY FOWL .10-.80.

LIGHT FOWL .05-.10.

MIXED FOWL .20-.95.

ROASTERS .45-.80.

GEESE .10-.25.

BANTAMS .10-.50.

BUNNIES EACH 1.25.

ROOSTERS .40-1.10.

TURKEYS .40-.75.

DUCKS .20-.50.

RABBITS .70-1.05.

GUINEAS 1.00-1.40.

PIGEONS, BY LB. 1.00-1.20.

WHITE EGGS: EXTRA LARGE & JUMBO .58-1.05; LARGE .49-.75; MEDIUM .45-.65.

BROWN EGGS: EXTRA LARGE & JUMBO .75-.93; LARGE .59-.76; MEDIUMS .46-.57; PULLETS .39.

Valley Stockyards

Athens, Pa.

Monday, Nov. 9, 1992

Report supplied by auction

HOLSTEIN HEIFER CALVES TO 165.00.

VEAL CALVES TO 83.00.

VEALER BULL CALVES

125.00-165.00.

SLAUGHTER CALVES 55.00-75.00.

GRASSERS & FEEDERS 42.00-60.00.

LAMBS SMALL TO 65.00, WOOLED

TO 51.00.

SHEEP 14.00-33.00.

HOGS 200-250 LBS. 38.00-42.00, FEW

TO 50.00.

SOWS 22.00-30.00.

BOARS LARGE TO 22.00.

PIGS EACH 14.00-21.00.

HEIFERS 40.00-54.00.

MEDIUM STEERS 48.00-61.00.

FEEDER STEERS 52.00-73.00.

BULLS 48.00-55.00.

GOOD COWS 46.00-48.50, COUPLE

TO 50.00.

COWS MEDIUM 43.00-45.00.

COWS POOR OR SMALL 40.00 AND

DOWN.

HORSES TO 545.00.

GOATS TO 62.50.

CATTLE AND CALF MARKETS

STEADY. IF YOU HAVE CATTLE FOR

DAIRY SALE NOV. 19. PLEASE HAVE

HERE BY NOON.

TOP PRICES FOR ALL TYPES OF CATTLE - Also Down & Crippled Cattle

MULVANEY LIVESTOCK SERVICES



Tom Mulvaney, Jr.
Easton, PA
(215) 258-1670



In NJ-Warren, Sussex And Hunterdon Counties

NOW IN NEW YORK - ORANGE COUNTY

In PA-Northampton, Bucks, Lehigh, Berks And Schuylkill Counties

★ All Cattle Paid On Hanging Dressed Weight



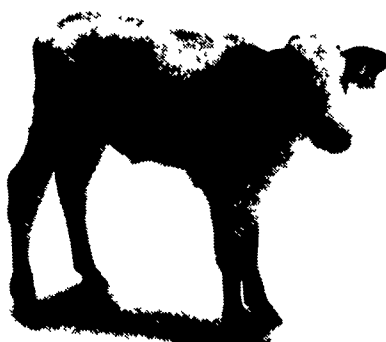
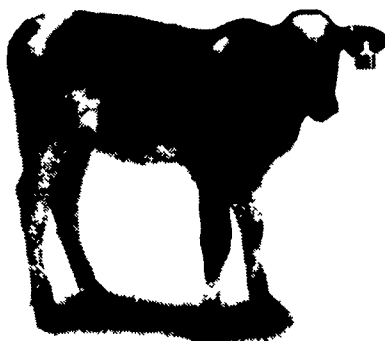
Notice Of Time Change
(Hay Sale)
Starting Jan. 1, 1992
(New Year's Day)

Hay And Straw Sales Will Start
At 10 A.M. Every Wed.

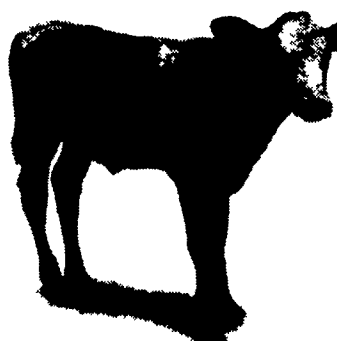
GOOD'S AUCTION
111 North Maple Ave.
Leola, PA 17540
717-656-8911
717-656-9554



THEY'RE ALL
GOING TO
GIVE MILK
SOMEDAY.



WHEN AND
HOW MUCH
IS UP TO YOU.

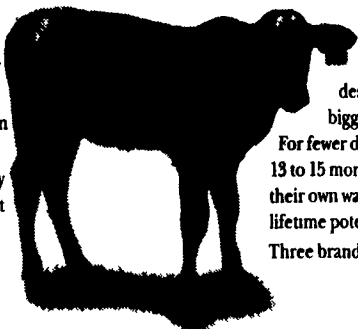


PAYBACK 24™

A complete feed program for profitable herd replacement from Agway.

Until a heifer freshens and enters the milking string, she's pure expense. And every day beyond the optimum 24 months costs you an extra \$2 to \$3 per day, per head in additional feed costs and lost milk production. At 28 months, for example, that's \$10,000 to \$15,000 worth of lost income in a 120-cow herd. A lot of money, even in good times.

Yet on many Northeast dairy farms, first-calf heifers don't freshen until 28, 30 or even 32 months!



The Problem?

Inadequate nutrition and poor management practices that result in undernourished, under-sized heifers, unable to achieve optimum growth and full potential

The Solution? PAYBACK 24.

Payback 24 is a comprehensive program consisting of eight high-quality Agway feeds, intensive nutrition and cost-effective management practices—all designed to help you raise bigger, healthier heifers faster. For fewer dollars. Ready to breed at 13 to 15 months. Ready to start paying their own way at 24 months with greater lifetime potential and profitability. Three brand-new feeds were specially

developed by Agway for use in this program. a Calf Pre-Starter that delivers exceptional performance, unlike any other in the Northeast and a calf starter containing highly palatable Ruma Sweet™, preferred by calves more than 4 to 1 in a Land O' Lakes trial of 15 competitive calf starter feeds. A selection of heifer feeds containing Bovatec™ in several protein levels rounds out the Payback 24 feed program.

Start Getting Your Payback Sooner. Talk to your Agway Feed Salesperson. Get the whole story on Payback 24. It's the first step toward a more profitable future.



Bovatec is a registered trademark of Hoffman-LaRoche

©1992 Agway Inc.

SCALE WATCHER®

ELECTRONIC WATER CONDITIONER

- Energy Saving
- No Maintenance
- Uses No Salt
- No Chemicals
- Eliminates Scale

Crandell-Thorley, Ltd.
955 Centerville Rd.
Lancaster, PA 17601
717-898-9630

