

# FINISHING BARNs NEEDED - AVAILABLE CONTRACTS

Farmer Boy Ag Offers The Latest Concept In Hog Finishing Building Design!



Consider A New Hog Unit For Added Cash Flow.  
Call Farmer Boy Ag At 717-866-7565



## BOSS HOG WOVEN WIRE

They're Talking About Boss Hog!



MOST ECONOMICAL

MOST DURABLE

REDUCES SCOURS

NON SKID FOOTING

The wire with the **BUMP!**

It's More Than A Sales Gimmick. It's Proof That You Are Getting Genuine Boss Hog Woven Flooring. So Look For The "Bump" To Be Sure You're Getting The Best...

Boss Hog Woven Wire!

Our Great New Boss Hog Super Heavy 3/8" x 16 Gauge Galvanized Woven Wire To Fit Your Needs! Tired Of Replacing? SEE US NOW! Other Gauges Also Available.

## PUMP OUT PIT FAN



Many manure storage pits have been constructed without providing for ventilation of the pit, particularly in buildings constructed several years ago when pit storage was first popular.

A non-ventilated pit results in a build-up of harmful, caustic gases, such as carbon dioxide, hydrogen sulfide, methane, ammonia and mercaptans.

Hydrogen sulfide and carbon dioxide are heavier than air and, as the level of pit waste rises closer to the slats, the gases are forced closer to the animals. Results of inhaling these gases may be deep, fast breathing from CO<sub>2</sub>. Hydrogen sulfide is one of the most toxic gases to animals and humans associated with liquid manure storage. This gas can cause severe irritation to the eyes and respiratory system and sometimes can result in death.

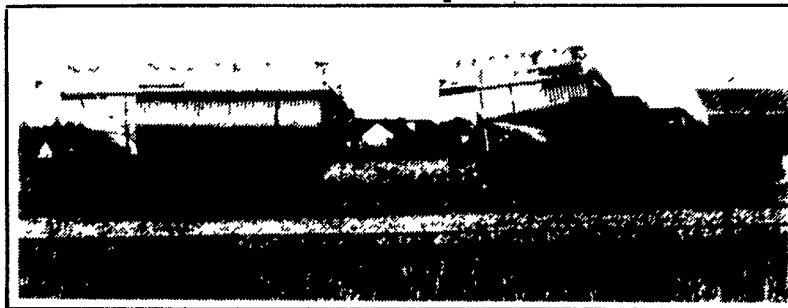
### SPECIFICATIONS

FAN SIZE	FAN MODEL	MOTOR H.P.	PROP RPM	0	.05
8"	POPF-8	1/15	3400	585	570
10"	POPF-10	1/6	3400	1155	1140

SEE US FOR YOUR VENTILATION NEEDS

## QUALITY CHORE-TIME BINS

We Assemble, Deliver & Set-Up Bins On Your Farm

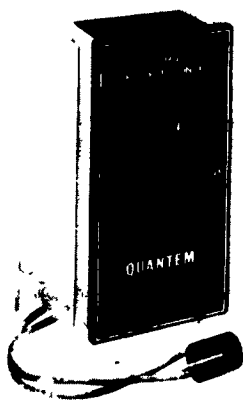


## QUANTEM

### SERIES 50

Temperature Modulating Fan Speed Control

Designed to be splash and dust resistant in accordance with NEC Article 547.



The "Vari-Speed" VENTILATING Control is a SOLID STATE, single phase, variable motor speed controller, designed to automatically ventilate industrial, commercial and agricultural facilities. The Series 50 provides ventilation control in proportion to the error sensed between the controller set point and actual space temperature as monitored by the controller's sensor. As temperature changes, voltage to the fan motor is changed proportionately.

Swine breeders: Improve your efficiency by detecting pregnancy fast and early.

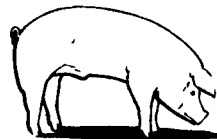
## RENCO PREG-TONE II

ULTRASOUND FOR ULTRA PROFITS

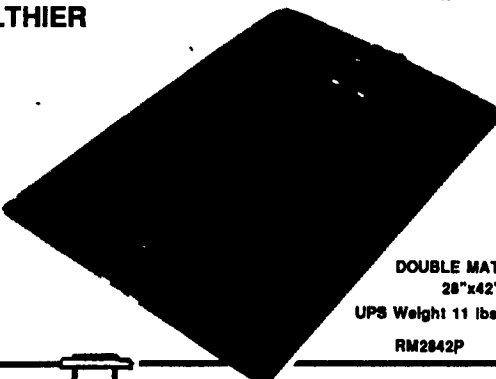


## CREEP PAD

WE MAKE YOUR WORK CLEANER, FASTER, AND HEALTHIER



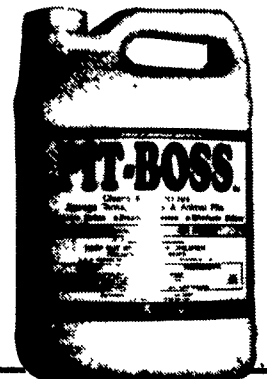
PIGS STAY WARM, DRY AND COMFORTABLE ON THIS BLACK RUBBER CREEP MAT. IT ABSORBS RADIANT HEAT WHILE BLOCKING DRAFTS THROUGH FLOORS AND PROVIDES INSULATION. ITS FLEXIBILITY PREVENTS DAMAGE WHEN KICKED BY THE SOW, WHILE TAPS LOCK IT UNDER THE CREEP DIVIDER. THE INEXPENSIVE MAT CLEANS EASILY, YET THE SOFT, RIBBED SURFACE PROVIDES EXCELLENT TRACTION FOR BABY PIGS.



DOUBLE MAT 28" x 42" UPS Weight 11 lbs. RM2842P

## NEW PIT-BOSS

Pit Additive To Reduce Pit Odor & Pit Solids



sunne controls

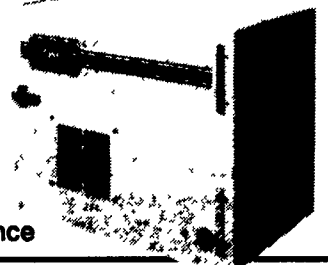


The Sunne TF115 Thermostat Has A Sealed Molded Plastic Case With All Exposed Metal Parts Of Stainless Steel, Intended For Applications That Need A Rugged Weatherproof Type Control Suitable For Either Heating Control Or Cooling Control.

L.E. WHITE Nobody does it better

## Agricultural Heaters

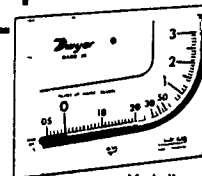
with Hot Surface Ignition



- Safety
- Quality
- Durability
- Performance

Dwyer PORTABLE STATIC-MONITORS

MARK II MOLDED PLASTIC AIR FILTER GAGES



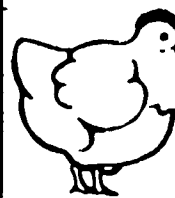
COMPACT, ECONOMY PRICED MOLDED PLASTIC GAGES

ACCURATE TO ±3% OF FULL SCALE

\$19.95

Mark II Model No. 2 molded plastic manometer

## ATTENTION POULTRYMEN!



We Now Have A Large Supply Of 36" and 48" Wide - 30 Weight Kraft Paper \$25.00 Per Roll 36"



Check Our Warehouse Prices

WE SHIP UPS

Swine & Poultry Systems Specialists  
**FARMER BOY AG.**  
INC.  
410 E. LINCOLN AVE MYERSTOWN, PA 17067

PH. 717-866-7565



Full Line Of Parts In Stock For Your Poultry And Hog Needs

Hours: M-F 7:00-5:00; Sat. 7:30-11:30