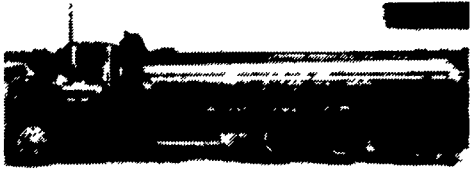


J & L Equipment
St. Thomas, PA
717-369-2637



Steel Pipe, Tubing & Sheet Steel

1/2" Through 12" Custom
Wholesale or Manufacturing
Retail Cut to Your Size
No Job Too Large Or Too Small

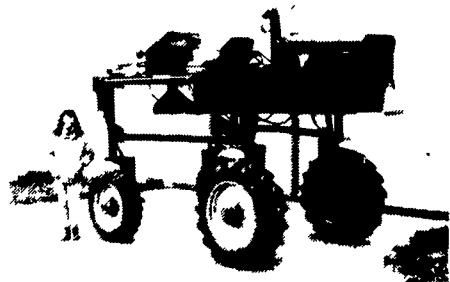


HAYBUSTER IG 10 INDUSTRIAL TUB GRINDER

8 Ft. Tub, 22 Ft. Conveyer, 265 HP Turbo Charged John Deere Power Unit, 400 Hrs. Grinds Skids, Construction Wood Waste, Sawmill Waste, Paper, Mulch, Plastics, Sheetrock, Leaves, Wood Chips, Glass, Yard Waste & Other Recyclables.

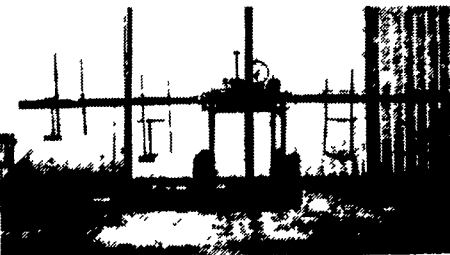
\$49,500

Call (717) 684-3975 Anytime
Ask For Jack or Jane



Hagie 470 Hi-Tractor

4 Wheel Drive, All Hydrostatic,
6' Row Clearance
\$3,500



NHD Hi-Tractors
w/Arms and Carriers,
Slow Moving Unit
\$2,500

Hagie 437 - \$1,800

Plain View Farms

Worton, MD

(410) 778-1065



DH 210 Manure Pump 6'-14'

With Dual Agitator, rotates at 270°, full or partial hydraulics & manual operated with flexible spout on agitator. It chops heavy straw. (Check our price before you buy.)
Option: Variable depth pitch. 6 to 10', 8 to 12' & 10 to 14'

Renting Lagoon & Vertical Manure Pumps

- * Gutter grate made to order
- * Self-close headgate
- * Round hay feeders
- * 2-7 horse hitch, yoke & jocket stick
- * Stainless steel & aluminum welding
- * Weather head, hydraulic hosing made to your size

— DRY HILL FARM SHOP —

Dauphin Co., RR Box 426
Lykens, PA 17048-9744
(717) 365-3109

Call 8:00 to 8:30 AM

Rt. 25, 1 Mile North of Crossroad Auction

Dealer Inquiries Welcome

C.S. SUPPLY

RD 1, Box 495A1, Millhall, PA 17751

BEILER'S MACHINERY

601 Musser School Road
Leola, PA 17540
717-656-9733

KELLER'S FARM MACHINERY

116 Richlandtown Pike
Quakertown, PA 18951
215/536-4046

USED TRACTORS

- Ford 501 off set, w/1R cultivator
- Ford 4000D, S.U., 8 speed
- Ford 445A Loader, 3 Pt., 4WD
- Ford 7000 Dual Power
- Ford 1220 4WD w/Loader
- Ford TW20, 4WD, Cab, Air, Dual Power & Weights
- Ford 7610 4WD Dual Power, ROPS, w/Canopy
- Ford 2810 Series 2, 8 Spd. w/Loader
- Ford 1720 4WD, w/Loader And Backhoe
- Ford 3600, 8 Speed, PS
- Ford 8N, Rebuilt And Repainted
- JD 350 B Crawler Loader
- JD 850 w/6' Belly Mower
- David Brown 1200
- Case 411 w/3PT
- Farmall 400, Gas, WFE
- Farmall 300, NFE, Fast Hitch
- MF 35 w/Loader, PS, Live PTO
- MF 150 w/Loader, PS, Live PTO

USED EQUIPMENT

- Badger Silage Wagon
- York 8' Rake
- NH 616 Chopper, 3 Heads
- Woods Cadet 84 Mower
- NH 357 Grinder Mixer



MASSEY FERGUSON

USED EQUIPMENT

- MF 2675 Diesel Tractor 103 HP.
- MF 760 Combine w/Grain Head
- MF 124 Baler
- NI 279 Mower Conditioner

For **SOLD** tractor

Lawn & Garden Tractors

NEW EQUIPMENT

- MF 231 Tractor
- MF 253 Tractor
- MF 362 Tractor
- MF 1020 Tractor
- MF 1020 Tractor, 2WD, Ag Tires
- MF 1020 Tractor, 4WD, Ag Tires
- (3) MF 1020 Tractor, 2WD, Turf Tires
- MF 1030 Tractor
- MF 1140 Tractor
- Woods LR108 Stone Rake
- Woods Mowers
- Herd Spreaders
- Brillion CPPG Chisel Plow
- Toro Wheel Horse Mowers

N.H. FLICKER & SONS, INC.

Box 68
Maxatawny, PA 19538
215-683-7252



WOODS BATWING MOWER 20', \$10,000
410-833-9091

WOODS D80, new, \$1,800 410-833-9091

WOODS MOWER #121, new, \$3,400.
410-833-9091

WOODS MOWER Cadet 84, like new w/warranty, only \$1,400 410-833-9091

JD 95 Combine w/heads, \$2250, 302/738-7830
10x30 Silo; 300 gal W-jonner, 410/398-1489

JD Corn Heads 4R, Model 435 40" row, 6R Model 635 30" row, kept inside, good working condition Parts available for JD 105 hydrostatic diesel combine 215/536-8624

FOR PARTS

- NH 880 N3 corn head for parts
- NH 770 harvester for parts
- JD 3800 harvester for parts
- NH 718 Harvester, For Parts
- IH 56 Blower for parts

TILLAGE

- IH 710 4x16 plow w/gauge wheel
- JD 1450 4x16 semi mount plow w/gauge wheel
- IH 510 4x16 plow, gauge wheel, side hill hitch
- IH 45 12' field cultivator, pull type, nice \$1,250
- IH 16' wheel harrow, hyd. fold, nice

MISC.

- JD 300 26' elevator w/motor
- JD round bale grapple for front end loader
- JD 2RW cornhead
- JD 38 Harvester, good condition w/2RW head
- JD 148 Loader, off 2840, nice
- IH 110 Forage Wagon, 3 beater w/Roof, Nice \$1,250
- NH 354 grinder mixer w/extended auger
- Gehl 65 grinder mixer, good
- 1 set of dual wheels w/tires, 14 9x28

KEITER'S USED FARM MACHINERY

Robert L. Keiter
Hallfax, PA 17032 (Carsonville)
25 Miles North of Harrisburg
(717) 362-9096
We Ship UPS!



WISCONSIN HEAVY DUTY ENGINES

Wisc.-Robin, Kawasaki, Kohler, Briggs & Stratton, Tecumseh, Honda

Rockford and Twin Disc Clutch Parts and Assemblies WISCONSIN

REPLACEMENT ENGINES New & Rebuilt Short Blocks

SPECIAL PURCHASE
FE 250D AS00
7.9 hp. Kawasaki - Heavy duty Engine
Overhead Valves
\$399.00 Postpaid

Authorized Service Center

• Complete Rebuilding • Large Parts Inventory

FISHER ENGINE SERVICE

3141 Old Phila. Pike, Bird-In-Hand, PA 17505 (717) 768-3729

W.N. COOPER & SON, INC.

Morgnec Rd. Rt. 282
Rt. 291 Cecilton, MD
Chestertown, MD 410-275-2195
410-778-3464



TRACTORS

- JD 4955 MF **SOLD** at 18.4x42, 950 Hrs.
- JD 4630, 1975 w/Cab & Air, Quad Range, 20.8x38 Duals, Reduced \$17,500
- JD 4230 w/Turbo & Quad Range
- JD 2550, 1985, Hi Lo Trans., Excellent Condition
- JD 950 w/Front Loader
- JD 755 w/**SOLD** & Mower
- Farmall 1586 w/Duals, 4,200 Hrs.
- 1979 AC 7020 w/Cab

COMBINES

- 1990 JD 9600, 4 WD, 326 hrs., duals.....\$94,000
- JD 9400, 1991, 135 Hrs., Sep. 643 Corn Head & 918 Platform, \$78,000
- JD 7700, 1975, 3,500 Hrs.
- JD 7700, 1971, 3,700 Hrs.
- JD 6620, **SOLD** Hrs.
- JD 6600
- JD 6600, 4WD, 1978, 2,100 Hrs.
- JD 643 Corn Head **SOLD**

Wide Selection Of Platforms
And Corn Heads Available

MISCELLANEOUS

- JD 7000 6 Row 30", Liq. Fert. Planter
- JD 7000 8RW Front Fold Planter, Dry Fert.
- JD 7000 12 Row 30" Front Fold Planter
- Brillion 13' 8 Cultimulcher
- Brillion 15' Cultimulcher w/Notched Whls.
- JD 534 Dozer Blade
- JD 10 Pt. Chisel Plow
- NH 320T Baler w/Kicker
- JD 7000 8 Row, 30" Liquid Fert.
- JD 1408 Rotary Cutter
- JD 27A Flail Shredder
- JD 16R 30" 7000 Planter, Liq. Fert., Insect.



1985 J.D. 455 D 3300 Hr.



1986 JD 450E 3000 Hr.



JD 544 Loader, Good Rubber, In Good Condition



1981 Case 450B With Backhoe In Nice Condition



Clark Forklift, 21 Ft. Reach Nice



Air Compressor With Ford Diesel, Good Engine, No Air

AA Equipment

1797 Robert Fulton Hwy.
Quarryville, PA 17566
717/529-2512