

Three Pa. Bulls Join Testing Program

Lancaster Farming, Saturday, November 7, 1992-D7

ADDISON, N.Y. — November 6 and 7 will be exciting days at the Cornell Beef Teaching & Research Center at Dryden, when 79 bulls consigned by 37 owners are delivered to start the 112-day test.

Bulls are coming from many areas in New York state, as well as from Maine, Vermont, Connecticut, New Jersey, and West

Virginia.

Angus consignors, all from New York, are Ballantrae Angus Farm, Westfield; Culvert Book Farm, Hamilton; Drover Hill Farm, Earlville; Hauman Angus Farm, Penn Yan; Kyburg Black Angus, Lyons; New Penn Farm, Truxton; North County Angus, Sandy Creek; Quakerbrook Farm, Lawtons; ShiRaLoKen Farm,

Deposit; and WayBet Angus, Morrisville.

Gelbvieh breeders consigning are Brandywine Farm, Freeport, Maine; Dunwalke Farm, Far Hills, NJ; and Elmer Newman of DeKalb Junction, N.Y.

Hereford and Polled Hereford breeds are represented by entries from Dunwalke Farm, Far Hills, N.J.; Four Oaks Farm, Somerville,

N.J.; Highlander Hollow Farm, Oneonta, N.Y.; Howes Graystone Farm, Massena, N.Y.; Scotchwater Farm, Clarence, N.Y.; Serendipity Farm, East Orland, Maine; Southwind Farm, Otego, N.Y.; Stone Ridge Farm, Livingston Manor, N.Y.; Top of the Hill Farm, Clinton Corners, N.Y.; and Valley View Farms, Buckhannon, W.Va.

The Simmental group has consignments from Caughnawaga Farm, Pittsford, Vt.; Fenton River Farm, Willington, Conn.; Forty Dollar Road Farm, Campbell, N.Y.; Porter's Simmental Lake Ranch, Waverly, N.Y.; Shag Bark Farm, Olean, N.Y.; and Triple H Farm, Carmel, Maine.

New Age Cattle Co. of New Berlin, N.Y., is consigning Salers and Salom bulls. Shorthorn consignors are Cloon Lara Farm, Youngstown, N.Y.; Stony Brook Farms, Locke, N.Y.; and Colonial Acres, Gorham, Maine.

Charolais bulls will be consigned by Cooper Charolais Farm, Windham, Maine and Mary & Bob's Farm of Hannibal, N.Y. Ken Marquis of Ithaca, N.Y. is consigning Red Angus bulls. New representatives in the bull test lineup are Blonde D'Aquitaine from Baker's Acres, Waddington, N.Y., and RX-3 from West Creek Cattle Co., Victor, N.Y.

Debbie Ketchen, coordinator of the bull test and manager of the Beef Cattle T&R Center, noted that the purpose of the test is to provide a program that allows beef producers to participate in a common test to evaluate the performance of bulls under similar, unbiased environmental conditions and to provide an opportunity for purebred breeders and commercial producers to purchase these performance tested bulls.

Interested persons are invited to observe the progress of the bulls. The test officially starts on December 1, and bulls will be weighed every consecutive 28 days until completion of the test. The bull sale will be held the evening of April 23, 1993, in the Livestock Pavilion at Cornell University.

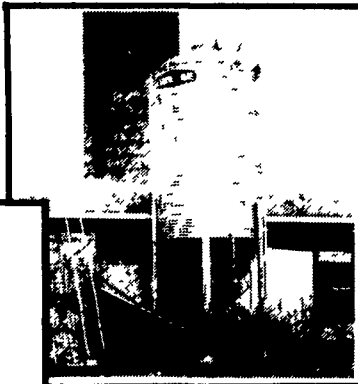
CHORE-TIME

BINS AND AUGERS



Take 'em Down!

We Stock Truckloads
Of Chore-Time Bins &
Miles Of Chore-Time
FLEX-AUGER

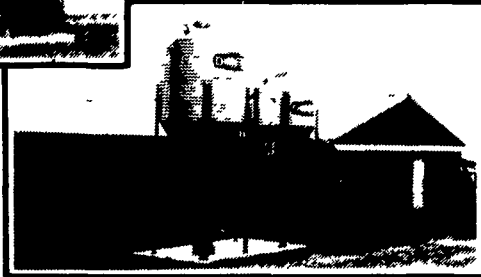


Put 'em Up!



Bins...
Large Or Small

Authorized
CHORE-TIME
Master
Distributor



Custom Applications



We Will Assemble & Deliver
Bins To Your Farm

**Northeast
agri
systems**

NORTHEAST AGRI SYSTEMS, INC.

FLYWAY BUSINESS PARK
139 A West Airport Rd.
Lititz, PA 17543
(717) 569-2702 1-800-673-2580



STORE HOURS
Mon.-Fri.
7:30-4:30
Sat. 7:30-11:30

FOR FREE ESTIMATES
CALL OUR TOLL-FREE
CUSTOMER
SERVICE NUMBER:
1-800-673-2580

AGRICULTURE'S
LEADING EDGE
FFA

PRECISE CONCRETE WALLS, INC.

For All
Your Concrete
Walls And
Construction
Needs

Agriculture - Residential - Commercial

- Buildings • Basement • Floors
- Retaining Walls • Footer
- SCS Approved Manure Storage Pits
- All Types Of Flat Work

Specializing in
Manure Storage
Round or Rectangular
In Ground or
Above Ground



12' x 83' Diameter Circular Manure Storage - Franklin County, PA

Invest In Concrete, Quality Work That Will Last A Lifetime

CALL FOR **FREE** ESTIMATES
AND SEE HOW AFFORDABLE
CONCRETE WALLS CAN BE

CONTACT
STEVE PETERSHEIM
717-355-0726

PRECISE CONCRETE WALLS, INC.

601 Overly Grove Road, New Holland, PA 17557

HAYBUSTER ROCK-EZE



combination rock picker and windrower

- Saves fuel, windrows and picks rocks in one operation
- Picks up rocks from 2' to 15" in diameter Hopper holds 1 cubic yard of rocks
- Ten-foot windrower with more aggressive tooth design for cleaner more effective rock picking
- Patented ground-driven wheel takes the rocks from the windrower and drops them in the hopper
- Choose either high-lift model for dumping rocks into a truck or on ground or select low-lift model for ground dumping only
- All hydraulic for quicker hook up and convenient operation No P T O

See your Haybuster Dealer or contact:

HAYBUSTER
Manufacturing, Inc.
P O Box 1940, Jamestown,
North Dakota 58402-1940
Phone (701) 252-4601

OR CALL:
AGRI-QUIP CORP.
1-800-228-8032

Haybuster manufactures quality
Grinders • Drills • Rock Pickers
• Big Bale Busters • Hay Stackers

DEALERS

**KNOTT &
GEISBERT, INC.**
3432 Urbana Pike
Frederick, MD 21701
301-662-3800

C.H. RINEHIMER
RD 1
Berwick, PA 18603
717-752-7131

**MESSICK FARM
EQUIPMENT, INC.**
Rheems Exit, Route 283,
Elizabethtown, PA 17022
717-367-1319