

**FARMS FOR SALE**

200+ ac. 2 1/2 miles East of Fairview, KY.  
167 ac. located in South Christian Co. Kentucky.

For more information write or call  
**Stanley Fritz Real Est. & Auction**  
1506 S. Virginia St.,  
Hopkinsville, KY 42240  
Ph. (502) 885-3117 Nights;  
Stanley Fritz (502) 886-4216

**3 Acre Property w/Large 2 1/2 Story House w/Full Basement. Approximately 2 Acres Meadow, 2 Story Barn. Buildings Only 6 Years Old. Located on Cooper Drive, Kirkwood, PA**  
**Elam Stoltzfus**  
422 Cooper Drive  
Kirkwood, PA 17536

**QUALITY SOUTHERN LANCASTER COUNTY FARMS**

171 acre Dairy Farm - 100 free stalls, silo, manure storage. Ready to go - fertile soils, many extras. Less than 6000 ac.  
101 acre farm - Fertile soils, stream, woods. Stone house - great setting or 95 acres ground only.  
50 Ac. Lovely Gentleman's Farm. Located in quiet setting in Chester Co.  
60 Acre Dairy Farm w/40 stalls. New setup. Located in Chester Co. Ready to go.

**CENTURY 21 Wagner-Hatton & Associates**  
Investment properties - Tax exchange opportunities for any buyer or seller  
Ken Rutt Farm Specialist Ray Stoltzfus  
717/786-3591 (H) 717/786-1300 (O) 717/548-3785 (H)

**PERRY COUNTY** - 212 acres ideal for steer, chicken or hog farm. 35 acres woodland, small amount of pasture & much of rest tillable.

**YORK COUNTY** - 98 acre farm in high state fertility. Stanchion barn w/pipeline & free stalls, milking equipment, large bulk tank, 3 large silos, manure holding pit, equipment shed & other outbuildings.

**JUNIATA COUNTY** - This farm has some of the better soils in Juniata. 4 Br stone house w/beautiful view of a mountain by a large river. Farm needs new barn of your choosing as dairy barn burned to the ground last Feb.

**FRANKLIN COUNTY** - 88 acre limestone dairy farm. All buildings in immaculate condition. A lot of shed areas. Can handle 50-60 cows. Shippensburg area.

All of these farms are priced between \$230,000 & \$350,000. You must see them to appreciate. Call Dale Landis, farm specialist, 626-5875.

**JACK GAUGHEN REALTOR**  
(717) 291-5921

**NEW LISTING:**

Near ski round top, York County, total 180 contiguous acres. Beef operation/ 4 sets of farm buildings on 4 deeds. 2464 sq. ft. modern rancher w/inground pool and horse barn w/1632 sq. ft. apartment on 19 ac. tract. (Super setting, very private) 44x104 equipment shed attached to bank barn, 2 1/2 story stone house (very nice) many other buildings - call for details/video.

**LANCASTER COUNTY FARMS FOR SALE**

#1 10 Acre Horse Farm w/12 stall modern barn and other outbuildings - 5 bedroom farmhouse, 2 1/2 baths.

#2 120 Ac. dairy farm - nice southern exposure, 5 silos, heifer barn, 46x100 equipment shed, room for 80 cows. **LARGE PRICE REDUCTION FOR QUICK SALE.**

#3 305 Ac. estate - This is a most unusual property!! A stately old stone house. Very good income from a 300 sow farrow-thru-finish hog operation. Includes complete feed mill w/60,000 bushel grain storage, etc, etc.

Call for details and video.

**Clinton County Nittany Valley near Rt. 80, 111 Ac. dairy w/round roof barn set up for 35 cows. Unique feature here is a spring that puts out over 4,000,000 gallons of fresh water per day. This has many potential uses: like fish hatchery, fish farming, etc., etc.**

**MAHLON OBERHOLTZER AGENCY**

Your Central PA Farm Broker  
Smoketown, PA 17576 (Lanc. Co.)  
717-392-1177

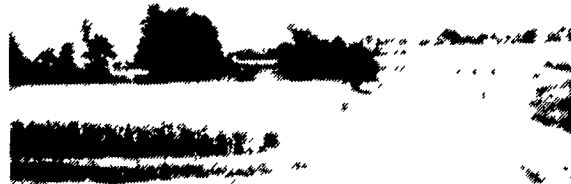
**Office/Retail Space For Rent**



4,800 sq. ft. (60'x80') of office/retail space. Will subdivide. Located in the heart of beautiful Amish Country. 9 miles east of New Holland, PA along Route 23. Approximately 3 miles west of PA turnpike, exit 22.

For more information.

**(215) 445-6580 (215) 286-9700**



**Northumberland Co.**

147± Acre dairy farm located N. of Route I-80. 2 1/2 story home with small dairy barn. 130A tillable Edom soil.

**Perry County**

111 Acre farm for horses or beef cattle. Large farm house and pole buildings. Approx. 95 acres tillable & 7 wooded acres. 1 mile west of Susq. River with river view. Priced at \$2200 per acre

**Juniata Co.**

Beautiful farmette with stream, 13 acre m/l with more available, located 1 mile west of Richfield on Route 35. 2 1/2 story farmhouse 2360 sq. ft. with 4 br. and 2 bath in good condition. Also good solid bank barn, 72x30 plus other outbuildings. Beautiful setting at \$119,500. Owner financing with 20% down.

**Lancaster Co.**

39 Acre tract in Conoy Twp. 24 A. open fields bal. wooded with stream. Current perk & probe. \$165,000.

Call Harry Zimmerman

Office: 717-299-4885  
1-800-472-2641  
Car: 717-575-2542

**TOWN & COUNTRY REALTY**



**OTHER FARMS AVAILABLE**

Please Call and Tell Us Your Preference

**PAUL M. LONGACRE**  
**REAL ESTATE BROKER**

Rt. 100 Hereford, PA 18058

Ph: 215-679-5919

Donald R. Longacre, A.S.B. (215) 679-5910  
Paul Zeisloft, R.E.S. (717) 437-2305  
Wilson Hoffman R.E.S. (215) 845-2443

**BERKS COUNTY (ALONG RT. 100)**

• 128 acres lots of road frontage, with large bank barn, beef/cow operation. Large stone and frame house with modern eat-in kitchen, lg. dining room, lg. living room containing center stairway, 4 BR, 1 1/2 baths, large sheds, 1 lg. metal shed 45x100 w/batch corn dryer, 2 car garage with shop area. Good well. Spot for trailer with all facilities. \$895,000. Reduced to \$645,000.

**NORTHAMPTON COUNTY**

• 68 acre dairy farm, 4 stall surge milking parlor with feeding, 39 free stalls and loose housing and heifer barn, 1600' M/L road frontage on Rt. 191, large frame house and small summer house, needs repairs. 65 building lots laid out by engineer. Call for details. \$595,000. Price Negotiable.

**BRADFORD COUNTY**

• 116 Acres Dairy Farm, Approx. 80 Tillable, Rest Pasture, Lg. 2 Story Frame House, Modern Family Kitchen, Lg. LR, Family Room, 2 Baths, 8 BR, Laundry, W/W Carpet, Lg. Dairy Barn With Double High Trashing Floor With 1 Story Addition, 70 Tie Stalls, Pipeline Milker With Lg. Bulk Tank, 3 Silos, Harvestore Grain Silo, Lg. 4 Bay Garage 36x60 Metal, \$225,000.

• 120 Acres, 85 Tillable M/L, Pasture 40 Acres, Remainder Wooded. Containing 3 Houses, (1) 2 Story, 8 Room, 1 1/2 Baths, w/Attached Garage, (1) 1 1/2 Story, 7 Room, 2 Car Detached Garage, (1) 1 Story, 3 Br., Bath, Detached Garage. 44 Stall Cow Barn, Milk House, Bulk Tank, Pipeline Milker. All Modern Conveniences. 2 Concrete Silos. Asking \$250,000. Can Be Subdivided.

**MONTOUR COUNTY (Between Washingtonville & Danville)**

• 133A m/l a prestigious estate farm has everything to offer. Location, privacy, a lg. frame 4 br. house w/2 full baths, modern kitchen and dining combination, den, LIR w/fireplace, picture window overlooking 3 acre pond, 100 tillable acres, large bank barn equipped for beef & hog, large pole shed for equipment, located in good farming area. Shown by appointment only. Contact Paul Zeisloft, 717-437-2305.

**LYCOMING COUNTY**

• HOUSE FOR SALE, NEAR MONTGOMERY, PA. BETWEEN RT. 15 & PRISON NEAR RT. 54, Rancher w/Brick Front, Aluminum Siding, 3BR, Eat-In Modern Kitchen, Full Bath, Full Basement, Oversized 1 Car Garage Attached, \$138,000.  
• 1A Adjacent, Lot Can Be Bought \$25,000.

**TIOGA COUNTY**

• 188 acres, over 100 tillable, balance pasture and woodlot. Beautiful recondition house 2 story, 4BR, 2 lg. baths, jacuzzi, eat-in kitchen, lg. lr., canning cellar, wood & oil BB heat. Lots of road frontage. Mobile home 12x60 on lot. Silos, 20x50, 20x80 Harvestores, 16x60 concrete slab, 3 barn cleaners, w/12 month manure pits, 103 milking stalls, room for heifers, pipeline milker, Westfalia milking machines on Boumatic pipeline, 1000 gal. bulk tank, 40x60 shed, storage shed. 100A available for rent. Above ground swimming pool w/deck. 85 cows can be bought at extra price. Cattle & Machinery can be bought separately at extra cost. Price of farm \$272,000. Hay & Silage Included. East of Wellsboro.

• 182 acres m/l dairy farm, 53 tie stalls with 2- 16x55 concrete stave silos, shop 30x30, horse barn 30x52, 2 1/2 " S.S. pipeline milkers, 500 gal. bulk tank, bull pen, heifer barn. 2 story frame house with aluminum siding, "big" modern farm kitchen with solid oak cabinets, LR, DR, laundry, office, wall to wall carpet throughout, 3 BR, 2 full baths, plus attic, \$200,000. Cattle, Machinery At Extra Cost.

• 213 acres, 160 tillable, 7 acres wooded, 46 pasture, all contoured. 16 room frame house, 1st floor remodeled, brand new farm kitchen, 3BR, LR, Lg. modern bath, 2nd floor, apartment 4BR, kitchen, LR, full bath. 65 tie stalls, 3 concrete stave silos, (2) 16x70, 20x70, with unloaders, barn has calf pens, and dry cow pens, New Plus 2" pipeline, 8 units. Sheds, 40x78, Quonset hut 40x70, equipment shed w/corn crib 40x128, good corn and alfalfa ground, \$268,000. Also to be bought at extra cost 75 cows and a very good line of equipment.