



**PRIMROSE REALTY**  
102 E. Madison  
Memphis, MO 63555  
816-465-7106

**PENNY BRANCH CHERYL PARSONS**  
Broker-Partner Broker-Partner  
(816) 282-3286 (816) 883-5616

Come home to the rolling hills of NE Missouri. This 131 m/l acre grass farm, cattle ready, completely fenced, two ponds and nice corral, nice 2 bedroom mobile home on blacktop location. \$52,400.

Combination CRP/Pasture farm contains 148 m/l acres, good fences, 2 ponds, VERY nice 3-4 bedroom home, grain storage, and other improvements, rural water located in NE Missouri priced at \$80,000. Owner will finance to qualified buyer.

NE Missouri farm consists of 120 m/l acres loaded with improvements, 3 bdrm home. 1000 head hog confinement, large machine shed, on farm sale barn. This is a factory waiting for the serious hog producer. Priced at \$180,000.

Mini-Farm located in NE Missouri has nice 3 bdrm ranch style home, barns, farrowing unit and numerous other improvements all on 10 m/l acres priced at \$55,000.

NE Missouri - 395 m/l acres combination row crop - beef cattle. Farm features many improvements including beautiful 4 bdrm brick home in close proximity to shopping, plenty water for stock, fences avg. to good, 2 machine sheds and 16,500 bu. grain storage. Won't last long at a unit price of approx. \$876.00/acre.

**GETTYSBURG AREA**  
130 Acre Amish Equipped Farm

45 stanchions, 600 gal. tank,  
3 silos, hog barn,  
2 houses, alfalfa

**HERSHEY FARM**  
**AGENCY, INC.**

**Thomas L. Hershey,**  
Realtor Associate  
**Hiram Hershey,**  
Realtor/Broker

1-800-346-0505 (PA only)  
215-287-8888

**NORTH CENTRAL PA**

71 Acres, exc. hunting, southern exposure w/panaromic views, open & wooded land, asking \$61,000 #1220.

90+ Acres beautiful views, not far from Mansfield or Covington, \$72,000 #1218.

**Own your own business.** Meat processing plant & equipment. All set up to go. 11 plus acres w/home included, 3 bdrms, 2 baths, fmly rm, Lr, Dr. Great setup for someone to earn a good living. Only \$135,000 #1225.

**Dairy Farm,** 100 cow barn + 150 acre river bottom acres, barn, milking parlor, 5 silos, machine shed, hay storage, main house has 3 bdrms, 2 baths, garage, inground pool plus more, tenant house 4 bdrms, 1 1/2 baths, etc. Much more on this once in a lifetime offering, asking \$340,000 #1215



9 Cone Street  
Wellsboro, PA 16901  
717-724-3500  
**REAL ESTATE**  
**AND INSURANCE**

**245 ACRE FARM**  
**IN MARYLAND**

Considered as one of the Best Working Farms within about one hour from the metropolitan area of Baltimore or D.C. 160 acres of tillable bottomland. Farm borders major river. Land has facilities capable of supporting 250 head of livestock or 100 head of horses. Well-maintained, upgraded 2 1/2 story brick home.

Asking \$825,000  
Fred Besley

**VIDEO REALTY COMPANY**  
(301) 473-4711

50 ACRES... Crop Farm - Bethel Twp. - Berks Co. - House - No Barn - Stream - Road frontage on 2 roads... \$129,900

77 ACRES... Perry Twp. - Southeastern Berks Co. - Stucco over stone 2 1/2 story house - bank barn - outbuildings - pond & stream - sets back from road - zoned R-A ..... \$325,000

9.6 ACRE FARMETTE... stone house, bank barn, in-ground pool, stream. Fleetwood Schools, must see!..... \$189,000

2 OLEY VALLEY DAIRY FARMS... total 312 acres, very good condition limestone land, flat topography w/ streams.....Call For Private Showing!

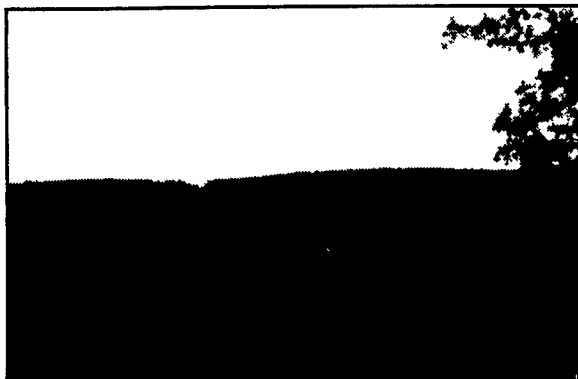
103 ACRE CROP FARM... Lehigh Co., secluded setting, bank barn, outbuildings and pond, close to Leaser Lake and Allentown..... \$395,000 OBO.

61 ACRE IND./COMM. FARM... with house, barn, pond. Along I-78, Bethel Twp..... \$395,000

**RICH BRANDT FARM REAL ESTATE**

2033 Penn Avenue, West Lawn  
Reading, PA 19609  
(717) 274-3622 - office - (215) 678-1122

**LAND**



**Secluded tract of 200± Acres** in northcentral PA is sure to please the sportsman! Wooded and open ground in an area well-known for great hunting. Ideal opportunity for your hunting group to use an isolated tract of land with the benefits that ownership brings. \$100,000.

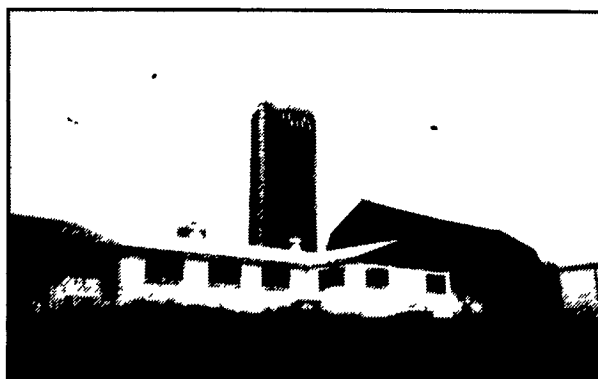
**Hilltop Location** with attractive country views near lake and recreation area. Partially wooded site with lots of pasture for animals. Good hunting, perc tested and ready for building. 142 acres. \$71,000

**To settle trust,** owner is offering this spacious hilltop tract in superb hunting area. Perc test completed, secluded yet easy access to paved road and short drive to Cowanesque Lake. 275 acres, asking \$117,200.

**In the market for a secluded piece of wooded land** for hunting or recreation? This parcel is priced right and awaiting your inspection. Over 30 acres gives you access to hunting and private outdoor enjoyment. \$19,500.

**Spectacular views** from this ten acre building lot! Septic permit included, ready for construction of your new country home. This choice spot would compliment and enhance your plans for the perfect rural home. \$13,500.

**FARMS**



**Near Beechwood Lake** in northern Tioga County, this newly listed dairy farm offers over 100 tillable acres, open pasture and woods. 70 cow barn equipped with pipeline, bulk tank, silo. One-story home features three bedrooms and two baths. End of road location for security, safety, privacy. Owner retiring. \$225,000.

**Picturesque country farm** in Potter County with a variety of amenities to meet your every need. Dairy barn, farm shop with machinery storage, horse barn with tack area, lots of forage space. Superb farmhouse with spacious rooms, first-floor bedroom with three more up, lots of living space. Hardtop road frontage, stream, ponds. Call for a closer look!

**A country spot** tailor-made for hobby or retirement farm. 50 acres situated not far from town with hardtop road frontage; former dairy barn; lovely one-story with large rooms, cozy fireplace in kitchen, first floor laundry, attached two-car garage and useable basement space. You won't be disappointed once you've seen all this farmette offers! \$88,500. Additional acreage available up to 257 total acres.

**COUNTRY HOMES**



**Magnificent country retreat** sits amid rolling hills in northcentral Tioga County. Five acres of manicured lawn, pond for fishing and skating, winding paved drive, stream in rear. Interior offers open beamed ceiling, cozy fireplace with charcoal grill, woodmode kitchen, spacious basement with another fireplace, loft, two baths, lots more. Call for a visit! \$149,500.

**Here's that one-story** with acreage you've been searching for! Spacious one-year-old ranch offers three bedrooms, two baths, full basement, central air plus ten acres of woods and open land. Country atmosphere not far out with easy access. \$79,500.

**Bradford County farmette** with large cape cod style home with excellent floor plan. Fireplace, library, first floor laundry, large first floor bedroom. Smaller two-story barn, ten acres, stream, pond, extra garage. \$89,000.

**Large, spacious semi-country** property between Elmira, NY and Mansfield, PA. First floor all renovated, work in progress on second floor. Lots of updates include newer roof, heating system, septic. Paved drive, shed wire for electric. 1 1/2 acres. Asking \$88,000.

**Satisfy your longing** for a spacious country farmhouse with this conveniently located two-story with two bedrooms down, more up. Plenty of room inside, 12 acres for outside enjoyment. Owner anxious, asking \$72,500.



**BEARD REAL ESTATE**  
403 East Main Street, Elkland, PA 16920  
Eric L. Beard, Broker

(814)  
258-7117