

34' City Aluminum Dump Roll Tarp Liner New Brakes&Tires V G Shape 609-935-2334 8-5.

4 1/2 Yd Cressi Dump Body, Complete \$450 Lanc County 717-367-0321 If no Answer 717-367-6062 Leave Message

4x4 Ford250 pickup snow plow cap, excellent body, 67K \$2,750 (410)658-4651

'74 Chevy C-65, 16' grain dump body, twin cylinders, all steel, 50" sides, 366 engine, 5+2, tagged at 40,000 lbs \$5,000. (301)898-7426.

'76 Chevy Stake Dump, excellent condition, current inspection 215/536-8624.

'81 International 1800 w/18" aluminum grain body, 34,000 GVW. Best offer 717-949-3952

'86 Ford XLT Lariat F250, 4x4, Super Cab, 460 Auto, PS, PB, PW, PDL, Cruise, Tilt, Air, AM-FM Cassette Stereo, Dual Tanks, 8,600 GVW, Towing Package, 56,000 Original Miles, Local 1 Owner, Like New 717-733-2873

'87 Chevy C10, 1/2 ton, 4x4, 305 Fl., auto., PB, PS, AM-FM, 6,250 GVW, rally whls, red & white, excellent condition, \$8,675 717-733-2873

'81 International S Model, Diesel, DT466, 5speed, 2 speed rear, 2 car rolled \$8500 717-273-7474.

'84 Ford F150 4x4, 300 6 cylinder 4 spd., PS, PB, high miles, \$1,975. 717-733-2873

'86 Dodge 250, 1/2 ton pickup, 318 auto, PB, PS, AM-FM cassette, sliding rear window, 1 owner, excellent condition, \$5,900 717-733-2873

'90 Chevy Beauville Extended 11 passenger Van, 350 Fl, auto, PB, PS, PW, PDL, cruise, tilt, dual air, AM-FM cassette, 28,000 miles, charcoal, excellent condition, \$13,500. 717-733-2873

'90 Ford XL F250 4x4, 351 Fl, auto, PS, PB, AM-FM, dual tanks, lock-out hubs, 8,600 GVW, 17,000 miles, excellent condition, \$13,500. 717-733-2873

**FALL CLEARANCE SALE ON NEW TRAILERS IN STOCK**

	Reg. Price	Sale Price
12' Stock	\$3053	\$2600
16' Stock	\$3495	\$3000
12' Horse & Stock Combo	\$3520	\$3195
16' Stock	\$4185	\$3700
10' Horse Trailer	\$4575	\$4000

**FRANK PIERCE**  
**(717) 949-3246**  
After 6 PM

**USED EQUIPMENT BLOWOUT**

- 10' One Way Plow without Hitch..... \$375
- 9' One Way Plow, Good Condition, With Hitch ..... \$1000
- 11' Gledhill One Way Plow, Good Condition ..... \$1300
- 6' Western Blade, Rough ..... \$110
- 14' Aluminum Dump Body with Cylinder, 38" Sides, 42" Ends ..... \$2,600
- Used Tailgate Salt Spreaders..... \$150 to \$750
- Used 8 1/2' Meyer Plow fits Old Style Chevy..... \$1,000
- New Ford Pickup Bed Take-Off—Red..... \$750
- Used Air Lift Axle ..... \$200
- Used Air Shift PTO's for Fuller Transmissions ..... Call for Pricing
- Used 14' Steel Platform Body..... \$400
- Used 20' Structural Platform Body..... \$800
- Used 16' Stake Body..... \$350
- Used Snow Equipment Arriving Daily

**E.M. KUTZ, INC.**  
Reading, PA 19607  
215-775-3528

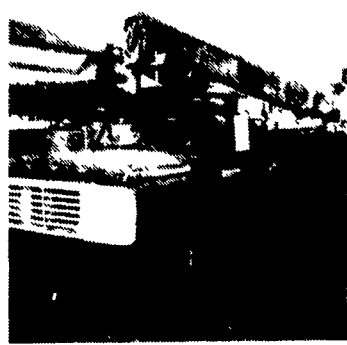
**Huntingdon Equipment**

Rentals Available **GOOD USED EQUIPMENT**

Huntingdon Valley, PA • 215-672-9667 • 1-800-543-3833 • Eddie



20 Ton P&H Crane 3 Sec. Hyd Boom mounted on a 1968 F.W D. both engine gas (new front 89), fleet maintenance



Ford Squirt Bucket 40' To Bottom Of Bucket, Others up to 65', Call For Details



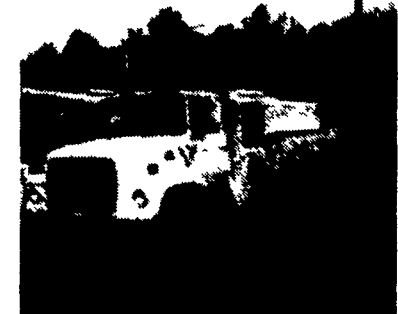
Dump Truck One of several - 1981 Ford F-600, gas, auto We also have five man cabs with dumps and air compressors.



1985 F-600 8 2 Diesel, Auto, 5 Man Cab, Utility With Rollup Door On Rear Clean, 20K Miles, Also 2-8c International 8 2 Diesel Auto 5 Man Utility Low Mileage



Ford Flat Bed with Pitman Boom 11,000 lbs Cap, Also Front Winch, One of Three



1979 Ford V8 10-Speed, Air, 14,000 Lbs. Boom, 2 Speed Auger, Upper Controls, 4 Outrigger, Dig Holes-Lift-Put Man In Air. This Unit Does It All.

**DIGGER DERRICKS/AERIAL BUCKETS/UTILITY EQUIPMENT**



**USED EQUIPMENT SALE**

**POSSUM BELLY TRAILERS**

- 1991 Barrett 48'x96"x13'6" Fat Cattle (Jailhouse)
- 1988 Eby 48'x96"x13'6" Cattle/Hog Combo (Jailhouse)
- 1987 Eby 48'x96"x13'6" Cattle/Hog Combo (Jailhouse)
- 1984 Merritt 48'x96"x13'6" Stocker-Feeder (Jailhouse)
- 1983 Wilson 48'x96"x13'6" Cattle-Pot
- 1982 Wilson 45'x96"x13'6" Cattle-Pot
- COMING!!
- 1991 Wilson Silver Stars 48'x96"x13'6" Cattle/Hog Combo

**STOCK TRAILERS**

- 1988 18'x6' Steel Gooseneck
- 1987 Eby 22'x8'x7' Gooseneck

**GRAIN TRAILERS**

- 1993 NEW Timpco 42'2" Hopper Bottom

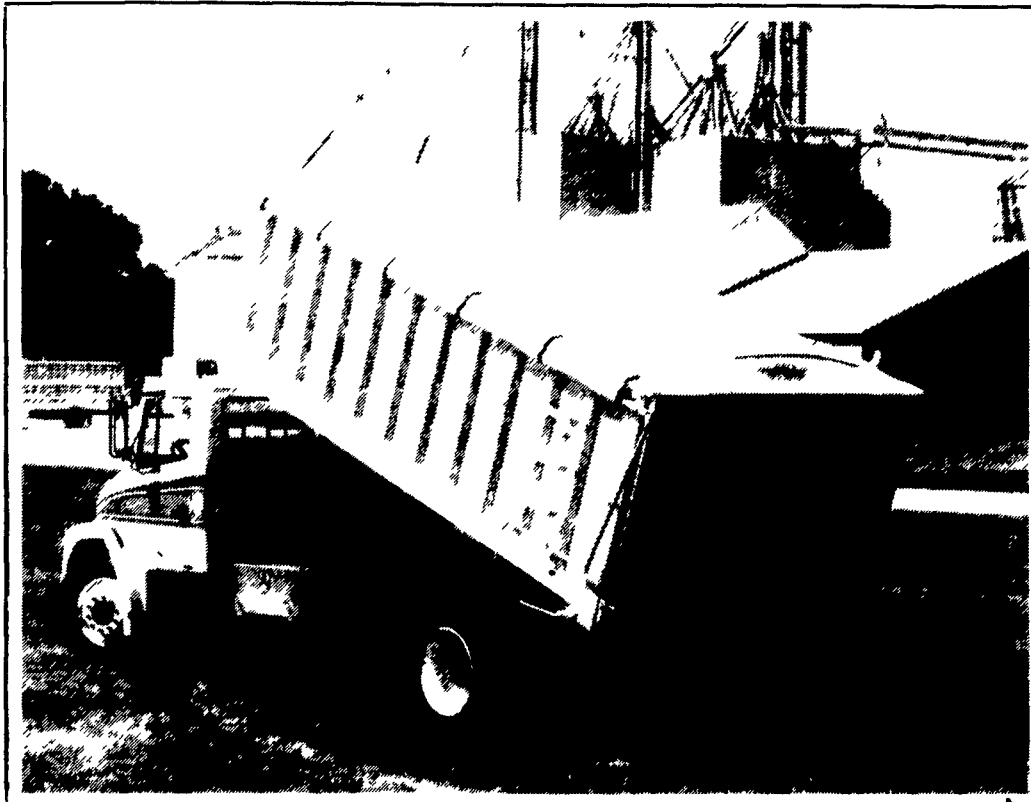
**BODIES**

- 14' Eby Aluminum Livestock
- 22' Eby Aluminum Livestock
- 10' Eby Aluminum Flatbed
- 20' Omaha Std. Steel Flatbed

**M.H. Eby, Inc.**

1194 Main Street (Route 23) Blue Ball, PA 17506  
(717) 354-4971 (800) 292-4752 FAX: (717) 355-2114  
4435 State Route 29 West Jefferson, OH 43162  
(614) 879-6901 (800) 752-0507 FAX (614) 879-6904

**In grain bodies, aluminum makes \$ense.**



Eby's time-tested design is available in lengths to 24' and a 48" standard height; optional heights include 54", 60" and 72". A long list of standard features such as tie rail, built-in steps, aerodynamic uprights and Harsh hoist is complemented

by a full range of custom options, including tailgates, Wahpeton tarps and chute. When you select your next grain body, consider the value that aluminum offers. It's a worry-free investment in your future.

Eby Aluminum Grain Bodies pay off in dependable long-term service. Their all-aluminum construction means:

- Greater payload efficiency
- Maintenance-free service
- Substantially higher resale value.

**EXTENDED FREE FITTING TARP THRU 12-1-92**

*If you think that steel is cheaper, think again. We can show you how aluminum actually saves you dollars in the long run.*



**M.H. Eby, Inc.**

1194 Main Street (Route 23) Blue Ball, PA 17506  
(717) 354-4971 (800) 292-4752 FAX: (717) 355-2114

4435 State Route 29 West Jefferson, OH 43162  
(614) 879-6901 (800) 752-0507 FAX (614) 879-6904

