

**LIVE GAME FISH**

Fingerlings and Adults, Large and Small Mouth Bass, Spotted and Rock Bass, Bream Crappies, Trout, Channel Cats, Bullheads, Walleyes, Perch, Minnows, Northern, Pickerel, Muskies, Red Gills, Mulletts, Carp, Eels, Turtles, Frogs, Israeli Carp, Also Aquatic Plants and Water Lilies **COLORFUL** Catalog \$2.00.



Truck, Air and Parcel Post Delivery  
**ZETT'S FISH HATCHERIES**  
DRIFTING, PENNA. 16834  
Phone: 814-345-5357

**Pa's Largest Wholesale Christmas Tree Auction**

**Tuesday, Nov. 24, 1992**  
10:00 AM

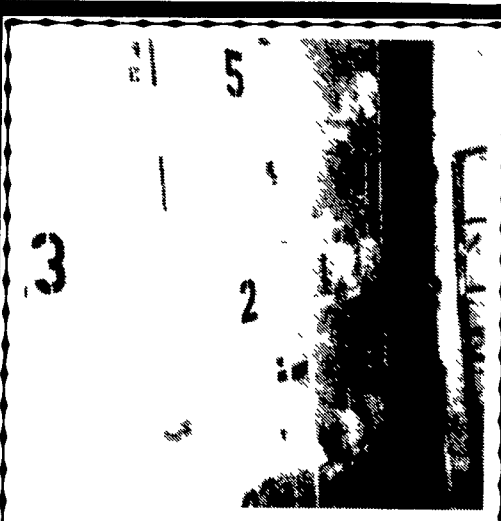
Buffalo Valley Produce Auction  
RD #3, Mifflinburg, PA

From Harrisburg take 11 & 15 to 15 North to Lewisburg. Turn left & travel West on Rt. 45 for 4 1/2 miles to Dreisbach Church Road. Turn left & travel 1/2 mile to crossroads. Turn right & proceed approx. 1/4 mile. Turn left to auction. Signs posted.

We will be selling a large volume of trees. If you are a tree grower or buyer, you will not want to miss this auction. Also, selling wreaths & Christmas crafts.

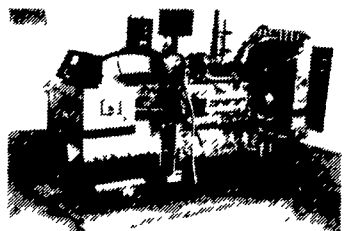
For more information call  
**717-966-1151**

Neil Courtney, Manager AU-002651-L



**1-800 AMP Allen Bradley**  
Elect. Station  
Like New  
Ph. 717-438-3354

**POWER SYSTEMS ELECTRIC, INC.**



SPECIALIZING IN GENERATOR SALES,  
SERVICE AND RENTALS  
**(717) 933-5617**

- 220 KW Cummins Low Hrs.
- 100 KW Allis Low Hrs.
- 80 KW P-S-E (New)
- 45 KW Maxi Diesel
- 30 KW Waukeshau L-P-G
- 25 KW Diesel (New)
- 20 KW Kohler L-P-G
- 15 KW Onan L-P-G

**PAINTED STEEL ROOFING & SIDING**

- Galvanized/Galvalume
- 29/26 Gauge
- 3 Major Brands Available
- Large Stock Trim & Sheet
- 5V Crimp Metal

**AS LOW AS \$32<sup>00</sup> per/sq.**

**Conestoga Building Supply**  
New Holland, PA 17557  
717-354-2613 or  
1-800-544-9484

**33 RECREATIONAL VEHICLES**

**1980 Jag 3000 Snow Mobile**  
Excellent Condition  
**\$750**

Day  
**(717) 656-6260**  
Evenings  
**(717) 656-7170**

**33 RECREATIONAL VEHICLES**

Grayhound Bus converted to motor home, self-contained, must sell, \$8500. 703/721-2150.

Jeep CJ3 1963, Very Low Mileage, Used on Farm Only Last 25Yrs. \$1000 OBO 301-607-6220.

Snowmobile: 1990 Polaris Classic, Excellent Condition, Electric Start, Very Low Miles, Must See Lanc County 717-626-9512.

**34 AUTOS**

90 Olds Calais 4 Dr, Blue, Quad 4 Aluminum Wheels Loaded, 10,000 Miles  
**\$8,300**

89 Escort, 2 Door, Automatic, AC, 18,000 Miles  
**\$4,450**

90 Pont. 6000 LE 4 Cl. Loaded, Gray, 4 Dr, 27,000 Miles  
**\$6,400**

90 Buick Skylark, Blue, 22,000 Miles, 4 Dr.  
**\$6,100**

84 Honda Accord 2 Door  
**\$2,800**

90 Toyota Corolla, 4 Door, 28,000 Miles  
**\$6,900**

86 F-150 V8, 4 Spd., AC  
**\$3,900**

90 Plymouth Horizon 4 Door, 13,000 Miles, Stick  
**\$4,500**

87 Plymouth Caravelle SE, 41,000 Miles, 4 Door  
**\$3,600**

87 Honda Civic DX, 3 Door, Automatic, A/C, 86,000 Miles  
**\$3,400**

91 Honda Civic DX, 4 Door, Automatic, A/C, 28,000 Miles  
**\$9,400**

**Burkholders Auto**  
Danville, PA  
**717-437-3848**

**35 TRUCKS & TRAILERS**

1989 Dodge Dynasty 4 Cyl., AT, AC, CR, Tilt, PDL, AM-FM, 60,900 Mi.....**\$5,900**

1988 Chevy Cavalier 4 Cyl., AT, AC, AM-FM, 67,000 Mi. ....**\$3,900**

1988 Ford Escort GL 4 Cyl., 5 Spd., AC, AM-FM, 33,100 mi.....**\$3,800**

1988 Honda Civic LX 4 Cyl., AC, Tilt, 5 Spd, PDL, PW, AM-FM Cass., 64,400 Mi. ....**\$6,600**

1987 Ford Tempo GL, 4 Cyl., AT, AC, AM-FM, 47,900 Mi. ....**\$3,800**

1987 Plymouth Horizon 4 Cyl., AT, AC, AM-FM Cass., 70,600 Mi.....**\$2,600**

1986 Olds Firenza 4 Cyl., AT, AC, Tilt, AM-FM, 57,800 Mi.....**\$2,900**

1986 Dodge Ramcharger, 4x4, V8, 4 Spd., AM-FM Cass., 38,000 Mi.....**\$5,600**

1983 Buick Skyhawk 4 Cyl., AT, AC, Tilt, AM-FM, 50,900 Mi.....**\$1,900**

1983 Pontiac 6000 V6, AT, AC, Tilt, AM-FM, 66,000 Mi. ....**\$2,800**

1985 Chevy Camaro V8, AT, AC, AM-FM Cass., 100,700 Mi....**\$2,900**

**Brubaker's Auto Sales**  
Myerstown, PA  
**717-866-5237**

**34 AUTOS**

1931 Model A complete drive line, excellent condition, \$2800. 609-894-2849.

1954 Chevy, 4 door sedan, mint condition, \$6500 OBO. 703/721-2150.

1982 Chevy Malibu Classic Wagon, No Rust, Best Offer; 1981 Dodge Maxi-Van, Runs Good, Best Offer. 215-445-6049.

1988 Chevy Bonaventure van 12 passenger, 350 engine, front/rear air heat, nice condition, \$7,600. (315)549-7664

**35 TRUCKS & TRAILERS**

14' Parkhurst grain dump, 42" sides and hoist, PTO for Ford truck (814)793-9574

1959 Diamond-T tractor, 220 Cummins RTO915 2 speed, \$6,000. 1939 autocar RH192, \$800 1952 White WC287, \$400 1951 IH L160 parts truck, \$100 1958 Autocar tractor, 262 Cummins, 10 speed, tandem airbag tag \$1,100. Prices negotiable St Marys Co. Call evenings, Gary (301)373-2190.

1962 Ford 350 Truck w/12' Bed, Hoist and Stock Rack, Engine Fair, Best Offer 814-667-3594

1985 Travis frameless dump trailer, 36' roll over tarp, very good condition, \$16,000. 717-922-3340, 717-658-4466.

1986 Chevy Suburban, fully equipped for heavy trailering. Many comfort features, very good condition Dealer maintained Served one owner Sadly outgrown Asking \$6,000 OBO (215)459-4593.

1975 Mack tri-axle, 19' aluminum dump, 237, \$13,000, 1977 International school bus, 392, auto, air brakes. 717-277-6007.

1 ton dump, 1976 GMC 12' Knaphiebe grain box, new livestock extension racks, 3 tailgates, 6 extra new wheels, tres, cab, rebuilt, fitted tarp, new brakes, shed kept, VG running truck \$2500 814-355-4523.

24,000 GVW Tag A Long Trailer, 8 good tires, electric brakes, inspected, ready to work, \$3000 717/246-3151

1980 SS American Reefer 42'6"x96"x13'6" Thermoking curbside door, very good 24 5 rubber, new brakes, drums, \$9500 OBO 717/582-4156.

1981 Ford 800, 429 gas, 32,000 GVW, 5+2, air brakes, PS; 1979 Ford 800, 429 gas, 32,000 GVW, 5+2, PS, air brakes. 301-877-9889.

1981 MS 300 Mack diesel, 5 speed, 20' bed, dumps and rolls back, 4' sides, good condition, \$6,750 OBO. (717)548-3294.

1983 International 9670, 350-Cummins 9-speed, wetline, \$12,500 or trade for hopper-bottom trailer. 609/453-0646.

1984 Mitsubishi Pickup, Air, radio, bed liner, new tires, \$2995 OBO, will take old pickup trade 717/397-1186 after 5pm.

1975 International Loadstar 1700, 404, gas, P S, AM/FM, 5+2 trans, dual gas tanks, hyd dump, Heil grain body, 18' long 40" sides, double doors and drop end gate, new clutch, electric ign, GVW 26,000, 74,000 miles, \$6500. 717-658-6109

1965 Ford 6x6, all-wheel drive, 17K, 330 gas, 5+2, new 8.25x20 tires, new paint, no rust, \$3500. 215-766-7694.

1968 Int. C1200, all-wheel drive, 304 gas, 4+2, new tires, new paint, many new additional parts, real workhorse, \$3000. Call 215-766-7694.

1971 Mack R model 10 wheel dump, 20' 600 bushel grain body, 237 engine, 5 speed Mack trans, good condition, \$6900 OBO. 215/626-2555.

1973 Ford 8000, 20' dump, 3208 engine. Good for grain or mulch. Call (410)592-7516 after 6pm.

1973 International 1600 7x10 dump body, rebuilt 345, 5x2, 21,000GVW excellent running condition, PS, tilt hood, \$3295 or trade for 1ton truck 717/258-0561evenings

1974 CUSTOM TANK TRAILER, aluminum, 8500 gallon, bottom load, vapor recovery, asking \$4750, 1952 ARMY 6x6 REO WRECKER, boom & winch, \$1350 215/343-0156

1975 Mack U Model tractor, single axle, 250hp Mack engine w/10 speed trans, not running, good for parts, \$650 OBO 215/626-2555.

1976 F600, 22' flatbed, 2 speed rear, liftgate, \$1500, '71 GMC 7500 dump, \$1500; '69 International, 24' rollback, 26000 GVW, \$5000; Yale forklift, 5000 lb., solid tire, propane, \$1500. 215-932-4019.

1977 Freightliner, 290 Cummins, COE, 13 Speed 1970 40' Fruehauf Flatbed w/Sides. 717-442-8093.

1977 Kenworth w/350 Cummins engine, \$6000 215-588-7346.

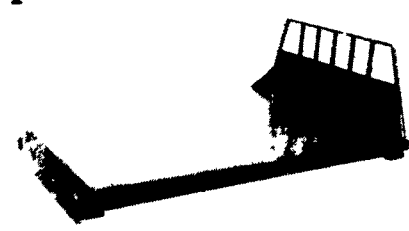
1978 Chevy C65 cab and chassis, 33,000 GVW. Air brakes. 427 V-8. 5+2. Tilt front end. New paint. Good condition, \$4,000 (717)753-3210

1978 Ford 7000 Truck, 35000 GVW, Hydraulic Brakes, 328 CAT Diesel, Good Condition \$4200 717-776-7725

1980 Mack DM600, 17' steel dump, 300 engine, 6 speed l-hole trans, road ready, new paint, many new parts, 717/284-4505

**Replacement Truck Bodies**

We Carry A Full Line Of Truck Body Accessories



Installation and Custom Fabrication Available

Length	Width	Frame Width	Price
7 Ft	66 or 78"	34, 38 or 40"	\$595
8 1/2 Ft	80 or 90"	34 or 38"	\$595
10 Ft	90"	34 or 38"	\$725
11 Ft	90"	34 or 38"	\$850
12 Ft	90"	34 or 38"	\$960
14 Ft	90"	34 or 38"	\$1050
16 Ft	90"	34 or 38"	\$1200
18 Ft	90"	34 or 38"	\$1400
20 Ft	90"	34 or 38"	\$1600

**Standard Features Include:**  
Headboard (Square or Tapered), Stake Pockets, Rubrail, Diamond Plate or 2" Wood Floor, Heavy Duty Construction

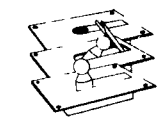
Plastic Wood Slats For Body Racks



Drop Hinge Scissor Hoists



Truck Tool Boxes



Goose Neck Ball Hitches

Trailer Hitches

Write For A Free Catalog **Ringo Hill Farms Equipment Co.**  
1624 Route 212 Quakertown, PA 18951  
215-346-7340 Fax 215-346-8041

Our 52nd Year **INTERNATIONAL TRUCKS**  
Sales • Service • Parts  
**IVECO** Parts, Service & Warranty

**CENTRAL GARAGE INC.**  
S. 2nd St., Womelsdorf, Pa. 19567  
**215-589-4581**

**UD TRUCKS**  
Sales • Service • Parts  
**Cummins** Service • Parts

SALES - LEASING STATE INSPECTION ASE Certified Mechanics! — REPAIRS — All Make Trucks And Cars

**NEW TRUCKS**

1993 International 4700.....	25,500 GVW
1993 Nissan UD 2600.....	26,000 GVW
1992 Nissan UD 130Q, 5 Speed.....	13,000 GVW
1991 Nissan UD 1800.....	17,000 GVW
1991 International 4600 Low/Pro.....	21,440 GVW

**USED TRUCKS**

1990 International 4900.....	32,900 GVW
1989 International.....	32,800 GVW
1988 Iveco.....	14,800 GVW
1977 Chevy w/Grain Dump.....	<b>SOLD</b> 32,200 GVW
1976 Chevy.....	23,160 GVW
1986 International 700.....	29,760 GVW
1986 Iveco Z340 (2 In Stock).....	18,900 GVW
1977 Ford L900.....	48,000 GVW
1976 International Fleetstar, Automatic.....	35,000 GVW
1978 International.....	19,200 GVW

**PRE-OWNED CARS & TRUCKS**  
1991 Dodge Caravan - \$14,500 1987 Dodge Ram PU - \$7,800  
1990 Olds Ciera - \$10,000 1986 Olds Firenza Sta. Wgn. - \$2,395

**ASSORTED NEW AND USED TRUCK BODIES FOR SALE!**  
• Grain Bodies, Stake Bodies & Van Bodies, 14 Ft. To 22 Ft.