

Lancaster Farming

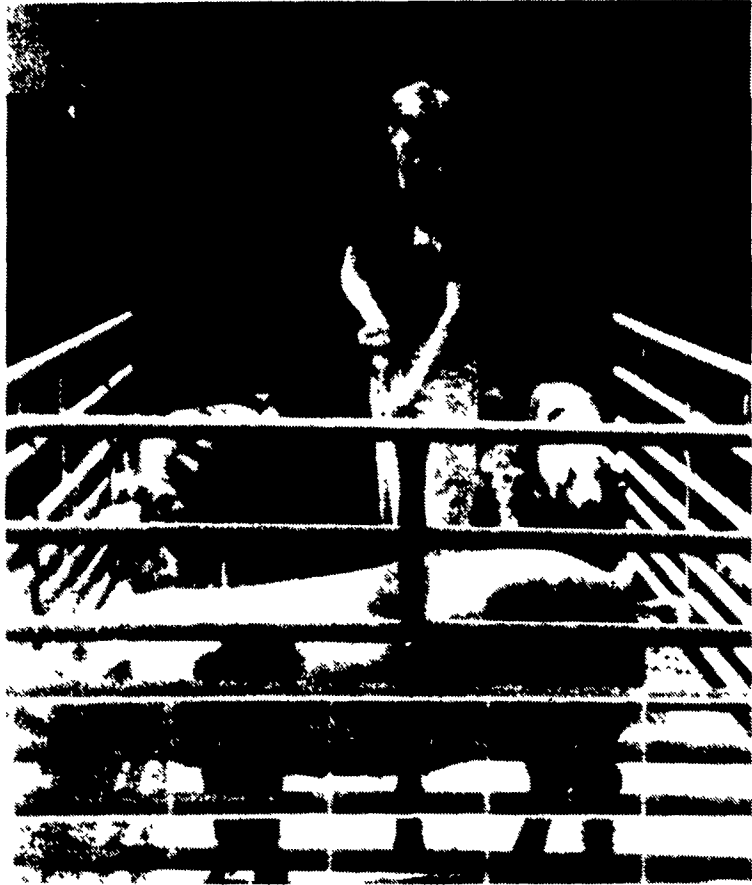
VOL. 37 No. 52

Four Sections

Lancaster Farming, Saturday, November 7, 1992

60¢ Per Copy

\$19.00 Per Year



Brian Lake specializes in obtaining boar semen from six commercial breeds and selling it across the country to breeding operations. For his efforts, Brian, 21, son of Donald and Marna Lake, Big Cove Tannery, will be named FFA Eastern Star Farmer at the 65th National FFA Convention, which begins next Thursday and lasts through Saturday in Kansas City, Mo.

Tour Investigates Deer Damage Problem

LINDA WILLIAMS
Bedford Co. Correspondent
BEDFORD (Bedford Co.) —

Seeking a mutual solution to a complicated problem, farmers, hunters, conservationists, politicians, and other interested individuals took a bus tour of Bedford County recently to survey deer damage.

"Deer are changing agriculture in Bedford County," said Richard

Hershberger, standing near a damaged cornfield on his farm located just south of Everett.

"Neighbors quit growing corn because of the deer damage. Consequently, they all moved into our fields. We sold off our dairy cows because we could no longer provide feed for them."

Corn crop loss on the Hershberger farm was estimated to be

(Turn to Page A21)



The state meat judging team practices for the national competitions by judging retail cuts of meat at Stoltzfus Meats Inc. in Intercourse where coach Jeff Craig works as a butcher. From the left, clockwise, are Wendall Landis, Dwain Livengood, Tracy Bollinger, Angela Erb, coach Anita Meck, coach Craig, and Chester Hughes, coach and Lancaster County Extension livestock agent.

FFA Eastern Star Farmer Specializes In Selling Swine Semen

ANDY ANDREWS
Lancaster Farming Staff
BIG COVE TANNERY (Fulton Co.) — Just like the dairy industry uses frozen semen obtained from bull studs, Brian Lake knows the same can be applied to swine.

That is, semen from boars can be easily transferred to sows. And this FFA'ers' business, B.L. Lake Co., specializes in obtaining boar semen from six commercial breeds and selling it across the country to

breeding operations.

For his efforts, Brian, 21, son of Donald and Marna Lake, Big Cove Tannery, will be named FFA Eastern Star Farmer at the 65th National FFA Convention, which begins next Thursday and lasts through Saturday in Kansas City, Mo. Brian is a member of the Warfordsburg FFA Chapter.

Brian told Lancaster Farming that he got the idea for using boar semen when he visited two farms

in Ohio. In 1983, Brian visited the farm of Don Verhoff, in Ottawa, and purchased his first Spotted Swine boar. Since then, he has increased the size of his operation from one boar to about 400-500 head of swine, including about 300 Spotted Swine and the rest from the Duroc, Landrace, York, Hampshire, and Poland China breeds.

Right now he is collecting semen from 25 boars, which he

(Turn to Page A20)

Milk Programs Debated At Historical Society Meeting

EVERETT NEWSWANGER
Managing Editor

PHILADELPHIA—The pros and cons of government programs in the dairy industry were debated at the monthly meeting of the Philadelphia Society for Promoting

Agriculture in center city last week. And for the sake of debate, two general managers of dairy cooperatives took opposing views. Dr. Paul Hand, secretary and general manager, Atlantic Dairy Cooperative, spoke for the prog-

rams, and Robert Vaughn, secretary/treasurer and general manager, Maryland and Virginia Milk Producers Cooperative, took the negative view.

They focused on the milk marketing orders and the price support program. Hand said these programs have changed over the years to meet the changes in the dairy industry. "Milk and milk products still are an important part of a healthful diet for American consumers," Hand said. "And milk products continue to be produced at fair and reasonable prices."

"On the other hand, the prices generated by the two systems have been at sufficient levels to bring forth an adequate supply of milk. The volumes of manufactured products purchased by the Commodity Credit Corporation proves that if prices exceed those needed to produce an adequate supply, more milk will be produced than will be sold in the marketplace. Those who would criticize the programs must look to different standards than those contained in the laws authorizing the two programs. Efficient

(Turn to Page A22)



The All-MD 100,000 lbs. cow is Savage-Leigh Glenview Linda for Christopher Savage. Photos of both the All-Maryland and the All Pennsylvania Holstein winners are presented on Pages C-10 & C-12 and D-4, D-5 & D-8.

Meat Judging Team Goes To Nationals

VERNON ACHENBACH JR.
Lancaster Farming Staff

INTERCOURSE (Lancaster Co.) — Four Lancaster County youths are to leave here Tuesday for Kansas City, Kan., to compete in the national 4-H meat judging competitions.

About 20 teams from across the United States are expected to attend the several day event to be held in the Food Barn Meat Warehouse, a large wholesale meat distributor.

According to Chester Hughes, Lancaster County Extension livestock agent and coach, the team has a strong chance of finishing in the top five.

Almost all four team members have had experience at the national level and have been practicing at several locations — meat shops in Lancaster County and at the Penn

State Meat Lab at University Park.

The members of the team are Wendall Landis, Dwain Livengood, Tracy Bollinger, Angela Erb. Team coaches are Jeff Craig and Anita Meck.

The Lancaster County team has come a long way since the mid-80s when Hughes was able to get help in developing the program.

According to Hughes, the county had a meat judging team go to compete at the state prior to 1985, but the current local support and consistent availability of up-to-date local judging knowledge was non-existent.

In 1985, Duff George, a summer assistant and then-student of animal science at Penn State University, came to work for Hughes. Hughes gave him the task of developing the county 4-H meat judg-

(Turn to Page A30)