

Farm Calendar

(Continued from Page A10)

Vernon Center, N.Y., 7:45 p.m.
 Wyoming County Cooperative Extension banquet, Triton Hose House, Tunkhannock, 7:30 p.m.
 Pa. Urban Forestry Workshop, Nittany Lion Inn, University Park, thru Nov. 7.
 Lancaster Farmland Trust annual dinner meeting, Willow Valley Resort and Conference Center, Palm Court, 6 p.m.
 Susquehanna County Holstein annual meeting, Montrose View Hall, Montrose, 8 p.m.
 Half-Day Dairy Workshop, First Baptist Church, Port Allegany, 10:30 a.m.-noon and McKean Co. Extension office, Smethport, 1:30 p.m.-3 p.m.

Saturday, November 7
 North American International

Livestock Exposition, Kentucky Fair and Exposition Center, Louisville, Ky.
 75th annual dinner, Carbon County Extension Association and 4-H Leaders Association, Luther Hall, Trinity Lutheran Church, Lehighton.
 Mid-Atlantic Forest Stewardship Seminar, Frederick Community College, Frederick, Md., 9:30 a.m.-4 p.m.
 Solid Gold Milking Herd Dispersal and Select Consignments, Emlenton, 11 a.m.

Sunday, November 8

Monday, November 9
 Northampton Co. DHIA/Holstein Association annual meeting and banquet, Stockertown Memorial Hall, 7 p.m.
 Agronomy Ag-Service Schools,

Days Inn, Meadville, 4 p.m.-9 p.m.

Tuesday, November 10
 Small fruit advisory meeting, York County extension office, 7:30 p.m.
 ADA/DC District 3, KFC, Chateaugay, N.Y., noon.
 Lancaster DHIA members meeting to explain Raleigh records, Farm and Home Center, 10 a.m.
 Franklin County DHIA banquet, Kauffman's Community Center, 7 p.m.
 Agronomy Ag Schools, UNILEC Building, 9 a.m.-3 p.m.
 Dairy Herd Management Conference, Williamston Inn.
 S.W. Pa. Hay Auction, Westmoreland Fairgrounds, 11 a.m.

Wednesday, November 11
 Veterans' Day

1992 National FFA Convention, thru Nov. 14.
 Northeast Greenhouse Seminar, Luzerne County Community College, Nanticoke, 9 a.m.-4 p.m.
 DHIA meeting, North Orwell Community Hall, 7:45 p.m.

Lancaster Farming, Saturday, October 31, 1992-A11

Thursday, November 12

Franklin County On-Farm Composting Field Days, Clifford Hawbaker's Farm, Chambersburg, 11:30 a.m.-3:30 p.m.
 Columbia County Cooperative Extension annual meeting, St. Luke's Lutheran Church, Lightstreet, 7 p.m.
 Northumberland County Cooperative Extension banquet, Otterbein Church, Sunbury, 7 p.m.
 Potter County DHIA annual meeting, Penn York Camp, Ulysses, 7:30 p.m.
 Chester County Extension annual meeting, East Brandywine Fire Hall, Guthriesville, 6:30 p.m.
 Agronomy Ag Service Schools, Arena Restaurant, Bedford, 9 a.m.-3 p.m.
 Annual Cooperative Extension meeting, Immaculate Conception Church Hall, New Germany, 6:30 p.m.
 DHIA meeting, Alba Church, 7:45 p.m.
 Centre Co. Holstein annual meeting, Progress Grange, Centre

Hall, 7 p.m.

Friday, November 13

Pesticide test, Schuylkill County extension office, 9 a.m.-noon.
 Pa. DHIA new reports explained, Lancaster Farm and Home Center, 12:30 p.m.
 Lancaster County Holstein banquet, Country Table Restaurant, Mount Joy, 7 p.m.
 York County Extension annual banquet, New Bridgeville Fire Hall, New Bridgeville, 7 p.m.
 Bucks County Holstein Club annual meeting, St. Matthews Lutheran Church, 6:30 p.m.
 Bradford County Holstein annual meeting, North Towanda Methodist Church, 7:45 p.m.
 Berks Co. Holstein annual meeting, 7 p.m.
 Warren Co. Holstein annual meeting, Sugar Grove Fire Hall, 8 p.m.

Saturday, November 14

Eastern Regional Emu Chapter Incubation and Hatching Seminar, Eden Resort Inn, Lancaster.
 Huntingdon County DHIA annual meeting, Mt. Union Fire Hall, 7 p.m.
 Dauphin Co. Extension annual meeting, Dauphin Co. Technical School, Harrisburg, 6:30 p.m.
 Sheep and Wool Growers annual meeting, Animal Science Auditorium, Penn State, 9 a.m.-noon.
 Clarion/Venango Holstein annual meeting, Murphy Grange, Sliigo, 7 p.m.

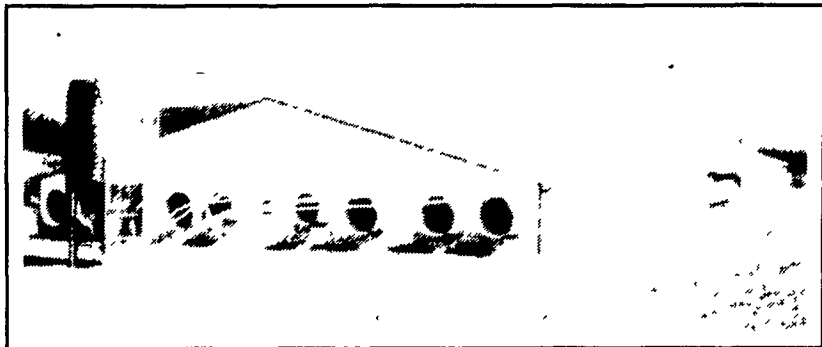
Sunday, November 15

Monday, November 16

Pennsylvania Farmers' Association annual meeting, Hershey Lodge and Convention Center, thru Nov. 18.

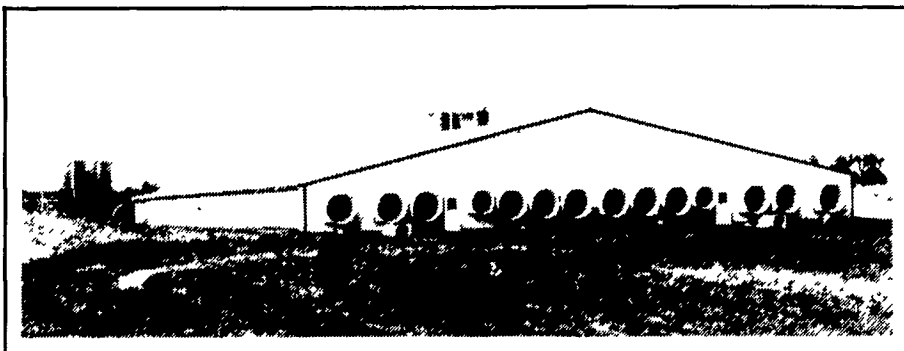
DO YOU NEED MORE FARM INCOME?

Plan For Your Future! Opportunities Exist For Qualified Farm Owners To Build New Hog Operations From 200-1200 Sow Feeder Pig Operations And 1000-3000 Head Finishing Floors.



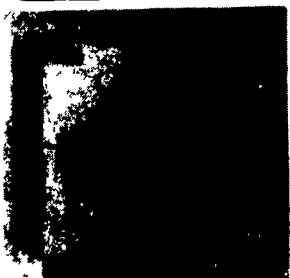
700 Sow Feeder Pig Unit

3000 Head Finishing Floor



TRI-COUNTY Is In Business To Provide All Your Confinement System Needs Including Total Construction Packages, Renovation Of Existing Facilities, And Reliable On-Farm Service. Our Professional Staff Can Assist You In Planning Financing And In Building A System Custom Tailored To Your Needs!

QUALITY PRODUCTS FOR TODAY'S PRODUCER

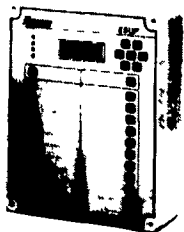


Find Out How You Can Save Thousands Of \$

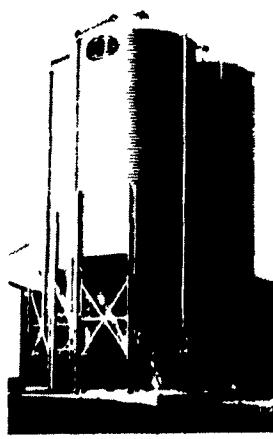
By Specifying An AEROTECH Certified Ventilation System In Your Building.



See the New ESU Environmental Computer Along With Feed Weighing And Water Consumption Capable Of Providing The Information You Require With Proven Reliability.



Galvanized Bulk Feed Bins And Flex Auger Feed Delivery



TRI-COUNTY

CONFINEMENT SYSTEMS INC.

608 E. Evergreen Rd., Lebanon, PA 17042

Ph: 717-274-3488

Hours: Mon-Fri 7:00 to 1:30 Sat 8:00 to 12:00



STRATFORD
 State of the art Coal Stoves at

DUSSINGER'S QUALITY STOVES

2533 OLD PHILA. PIKE, Rt. 340, Smoketown, PA
 3 Miles East of Lancaster
 Tues., Thurs. & Fri. 10-8;
 Wed. & Sat. 10-5
 (717) 397-7539

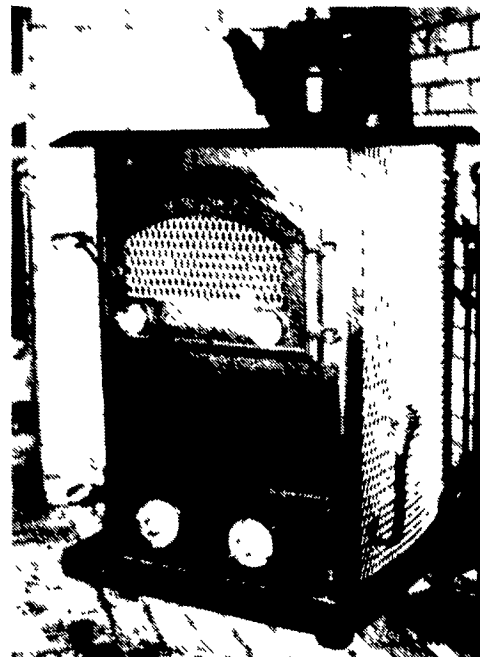
* SEE OUR NEW EFFICIENT EPA WOOD STOVES

D.S. MACHINE SHOP

238B Old Leacock Rd., Gordonville, PA 17529

717-768-3853

CUSTOM BUILT COAL STOVES



- LARGE GLASS DOORS
- ENERGY EFFICIENT

IN STOCK

— UPS Service —

