

53.50-59.25 1-2 1600 LBS & OVER 56.00-58.00  
**TOTAL LAMBS: 13 HEAD FEEDER LAMBS 13 HEAD CHOICE AND FANCY 70-85 LBS 54.00 CHOICE AND FANCY 50-60 LBS 60.00**  
**FEEDER CATTLE 320 HEAD - NO TRENDS REPORTED. STEERS; MEDIUM 1 SMALL 1 MED.&LARGE 2 300-400 83.00-90.00 78.00-83.00 400-500 81.50-88.00 71.50-79.00 500-600 74.30-84.50 68.00-73.50 600-700 71.00-77.00 70.00-75.50**  
**HEIFERS; MEDIUM 1 SMALL 1 MED.&LARGE 2 300-400 61.50-70.50 65.00-74.00 400-500 70.00-74.50 64.50-70.00 67.50-73.50 500-600 68.00-72.50 57.00-62.50 66.00-70.50 FEEDER BULLS; MEDIUM 1 SMALL 1 MED.&LARGE 2 300-400 LBS 84.50-87.50 65.00-74.00 400-500 LBS 78.00-84.50 64.00-75.00 68.00-75.50 500-600 LBS 65.00-72.00 60.00-63.50 63.50-69.00 600-700 LBS 72.50-74.00**  
**----- COWS RETURNED TO FARMS 15 HEAD - M&L-1, 5-8 YRS OLD \$37.00-49.50 PER CWT MOSTLY \$40.00-45.50 PER CWT. BABY CALVES RETURNED TO FARMS 8 HEAD NEWBORN TO 4 WKS OLD \$65.00-77.50 PER HEAD. OVER 100 LBS \$100.00-109.00 PER CWT.**

**SLAUGHTER COWS AND SLAUGHTER BULLS STEADY**  
**SLAUGHTER COWS 155 HEAD CUTTER & BNG.UT. 1-3 42.00-49.00 BRKG.UT. & COMM. 2-4 41.00-47.00 CANNER & LOW CUTTER 1-2 37.00-43.00**  
**SLAUGHTER BULLS 9 HEAD 1-2 1300-1600 LBS 55.00-61.00 1-2 1600 LBS & OVER 58.00-61.00**  
**SLAUGHTER CALVES AND VEALERS 40 HEAD CALVES GOOD & CHOICE 250-300 LBS 76.00-81.00**  
**FEEDER CATTLE 380 HEAD - NO TRENDS REPORTED. STEERS; MEDIUM 1 LARGE 1 SMALL 1 MED.&LARGE 2 200-300 86.00-96.00 86.00-96.00 300-400 85.00-92.00 85.00-92.00 80.00-85.00 81.00-87.00 400-500 83.00-92.00 83.00-92.00 75.00-82.00 77.00-83.00 500-600 80.00-87.00 80.00-87.00 72.00-77.00 75.00-78.00 600-700 75.00-82.00 75.00-82.00**  
**HEIFERS; MEDIUM 1 LARGE 1 SMALL 1 MED.&LARGE 2 300-400 72.00-81.00 75.00-81.00 68.00-74.00 69.00-77.00 400-500 72.00-80.00 73.00-81.00 65.00-72.00 67.00-72.00 500-600 72.00-80.00 75.00-80.00 65.00-70.00 67.00-72.00 600-700 69.00-77.00 69.00-77.00**  
**FEEDER BULLS; MEDIUM 1 LARGE 1 200-300 LBS 80.00-88.00 80.00-88.00 300-400 LBS 78.00-86.00 78.00-86.00 400-500 LBS 75.00-81.00 75.00-81.00 500-600 LBS 75.00-80.00 75.00-80.00**  
**COWS RETURNED TO FARMS 90 HEAD M&L-1, 3-6 YRS OLD \$650.00-740.00 PER HEAD. M&L-1, 7-9 YRS OLD \$500.00-625.00 PER HEAD.**

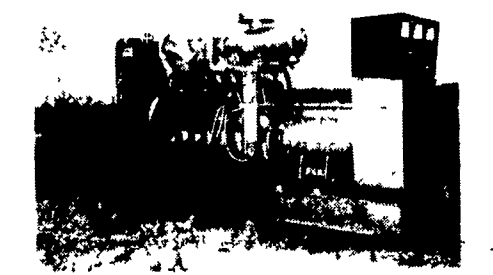
**Virginia Weekly**  
 RICHMOND VA  
 OCTOBER 22, 1992

WEEKLY REVIEW IN VIRGINIA THE VIRGINIA DEPT. OF AGRICULTURE MARKET NEWS SERVICE WILL BE HOLDING A STAFF MEETING DURING THE AFTERNOON ON THURSDAY, OCTOBER 22, AND FRIDAY, OCTOBER 23, 1992. THEREFORE, NO REPORTS WILL BE ISSUED FROM THIS OFFICE THURSDAY AFTERNOON AND FRIDAY.

**North Virginia**  
 RICHMOND VA  
 OCTOBER 22, 1992

SOUTHSIDE (BLACKSTONE), VIRGINIA ON OCTOBER 21, 1992  
**SLAUGHTER CATTLE 93 HEAD - NO TRENDS REPORTED. SLAUGHTER COWS 87 HEAD COWS CUTTER & BONING UT. 1-3 41.00-45.75 BREAKING UT. & COMM. 2-4 43.75-47.75 CANNER AND LOW CUTTER 1-2 35.00-40.00**  
**SLAUGHTER BULLS 6 HEAD 1-2 900-1300 LBS 56.00 1-2 1300-1600 LBS**

**ORANGE, VIRGINIA**  
 OCTOBER 21, 1992  
**SLAUGHTER CATTLE 159 HEAD -**



**GENERATORS**  
 Sales \* Service \* Rentals  
 \* Complete Generator Systems.  
 \* PTO \* Portables \* 2-1600 KW  
 "We Service It If You Have It And Sell It If You Need It"  
 34 W. Mohler Church Rd.  
 Ephrata, PA 17522  
 Tel: 717-738-0300  
 Fax: 717-738-4329

**Replace Your Bulbs - Save Electricity**  
**FLUORESCENT LIGHTS**

**PRICES AS LOW AS \$6.99 NOW \$5.95**

- Save Energy-Replaces up to 75 watt incandescent
- Easy Installation
- Economical-Lasts 10 times longer than standard bulb
- Fewer Lamp Changes
- Lower Maintenance Cost
- Durable Polycarbonate Housing
- 45,000+ Hour Ballast
- 10,000+ Hour Lamp Life
- Air Cooled
- Water Resistant Ballast
- 120 Volt
- Ratcheted Brass Socket
- Medium Base
- Starting Temperature 0°
- Made in USA

2900	3200	3500
5	7	9
25 WATTS	40 WATTS	60 WATTS
400	800	1300

Call Toll Free 1-800-673-2580  
 SOLD AND SERVICED BY:  
**NORTHEAST AGRICULTURAL SYSTEMS, INC.**  
 FLYWAY BUSINESS PARK  
 139 A West Airport Rd.  
 Lititz, PA 17543  
 (717) 569-2702

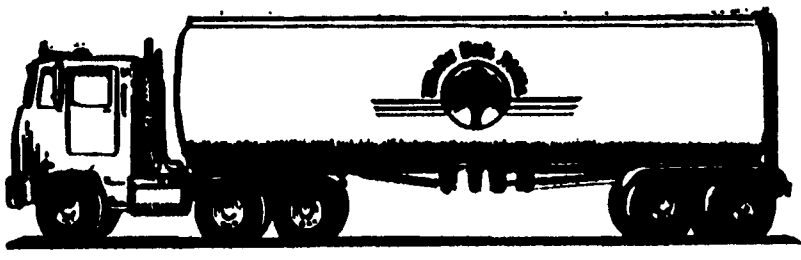
**Four States Livestock**  
 Hagerstown, Md.  
 Oct. 21, 1992

Report supplied by Auction  
**SLAUGHTER COWS: 108 HEAD. UTILITY 46.00-50.00; HIGH DRESSING TO 51.50; CANNERS 42.00-46.00; SHELLY 42.00 DOWN.**  
**BULLS: YG #1 2015 LBS. AT 64.50; YG#2 1100-2300 LBS. 53.00-59.00.**  
**FED STEERS: HIGH CHOICE TO PRIME 1200-1450 LBS. 77.00-78.75; FEW 1600-1700 LBS. 74.00-75.00; LOW CHOICE 1000-1300 LBS. 70.00-72.00; SELECT-64.00-70.00.**  
**FED HEIFERS: NO HIGH CHOICE OFFERED; LOW CHOICE 1300 LBS. TO 67.50; STANDARD TO LOW SELECT 55.00-60.00.**  
**VEAL CALVES: CHOICE, NONE; GOOD 200-300 LBS. TO 87.00; 150-200 LBS. 63.00-75.00; CULLS 85-115 LBS. 52.00-59.00; WEAK/ROUGH 45.00 DOWN.**  
**FARM CALVES: HOLSTEIN BULLS #1 90-120 LBS. 135.00-158.00; #2 80-110 LBS. 90.00-125.00; HOLSTEIN HEIFERS #1 95-120 LBS. 135.00-160.00; 75-90 LBS. 75.00-130.00; BEEF X BULLS 95-120 LBS. TO 130.00.**  
**BUTCHER HOGS: US#1&3 215-260 LBS. TO 41.00; 1 LOT #3 TO 37.25.**  
**SOWS: STRONG DEMAND. FEW 300-400 LBS. TO 38.00; 400-600 LBS. 34.00-37.00; THIN 29.00-32.00.**  
**BOARS: 1 890 LB. AT 29.50; 1 395 LB. AT 31.00.**  
**STOCK CATTLE: 301 HEAD, BIDDING ACTIVE! PRICES 3.00-8.00 HIGHER! STEERS MEDIUM AND LARGE FRAME 200-400 LBS. 80.00-94.00; 400-600 LBS. 75.00-88.00;**

**Frederick Livestock Auction**  
 Frederick, Md.  
 Oct. 19, 1992

Report Supplied by Auction  
**SLAUGHTER COWS: 80 HEAD. UTILITY 47.00-50.00; HIGH DRESSING 51.00-52.00; CANNERS 43.00-47.00; SHELLY 43.00 DOWN.**  
**BULLS: YG#2 1150-1600 LBS. 53.00-56.00.**  
**FED STEERS: NO CHOICE OFFERED; SELECT 1100 LBS. 68.00-70.00.**  
**FED HEIFERS: STANDARD TO 57.00.**  
**VEAL CALVES: CHOICE, NONE; GOOD 140-200 LBS. 75.00-86.00; CULLS 85-110 LBS. 53.00-59.00; 50-80 LBS. 45.00-53.00; WEAK/ROUGH 40.00 DOWN.**  
**FARM CALVES: HOLSTEIN BULLS #1 95-125 LBS. 140.00-162.00; 80-90 LBS. 90.00-135.00; HOLSTEIN HEIFERS #1 95-125 LBS. 140.00-162.00; #2 80-110 LBS. 120.00-140.00; BEEF X BULLS AND HEIFERS 80-100 LBS. 90.00-110.00.**  
**BUTCHER HOGS: GOOD DEMAND FOR HEAVY WEIGHTS. US#1&3 215-260 LBS. 40.00-41.25, 1 AT 42.25; 290-350 LBS. 38.00-41.00, 3 AT 49.50.**  
**SOWS: NONE.**  
**BOARS: 500 LBS. TO 30.50.**  
**SHEEP: 19.00-39.00.**  
**STOCK CATTLE: STEERS 500-700 LBS. 65.00-70.00; 700-900 LBS. 63.00-69.00; HOLSTEINS 350 LBS TO 72.00; 700 LBS. TO 56.00.**  
**HEIFERS: 300-500 LBS. 59.00-69.00; 500-700 LBS. 57.00-64.00; HOLSTEINS 400-500 LBS. 76.00-83.00.**  
**BULLS: 300-500 LBS. 65.00-69.00; 600-800 LBS. 56.00-65.00.**  
**LAMBS: 85-115 LBS. 48.00-49.00.**  
**PIGS AND SHOATS: BY THE HEAD, 35 LBS. 13.00-14.00; 60 LBS. 22.00; 100 LBS. 28.00-30.00; BY THE POUND, 130-180 LBS. 35.00-41.00**

**White Oak Mills**  
**GRAIN EXCHANGE PROGRAM**



- No Quantity Limit
- No Shrinkage and Handling Charges
- No Storage Charges If We Use Your Grain In Your Feed.

**We Offer Attractive BULK and CASH Discounts!**

For More Details On Our Grain Exchange Program Call Today



**Quality People, Products & Service WORKING FOR YOU**  
 419 West High St.  
 Elizabethtown, PA 17022

PA, MD Toll Free 1-800-468-5524  
 Elizabethtown (717) 367-1525  
 Pottsville (717) 532-7845

**BOYDELL FARMS**

302 Iona Rd., Lebanon, PA 17042  
 Phone: 717-272-8943

**DISTRIBUTORS FOR:**



2390-2402-2517-2518  
**North Coast Seed Corn**  
 NEW!  
 2525 - 2339  
**LAST YEAR'S PRICE LESS 10%**  
 PAID BY OCT. 25th

**WHEAT**

Tyler - Cardinal - Wakefield - All New Sawyer Replaces Twain

**SOYBEANS**

STINE NC 3090E 354-284-Shore Resnick - Pella

**SMALL GRAINS**

Wysor - Sussex SEEDS WILL COME FROM VARIOUS STATES  
**TIMOTHY, TORO and CLIMAX TIMOTHY**

**ALFALFA**

84 VWAP VERNAL Wetfood Erie

**BALER TWINE FERTILIZER DANCO RYE BALBOA TYPE RYE & TP RYE**

WHOLESALE & RETAIL