


**Pennsylvania
PRV HEADLINES**



A bi-weekly communication from
PA Pseudorabies Committee and Penn State Extension
to alert you to developments in PRV and its control

WHAT IS PSEUDORABIES?

Editor's Note: This article is adapted from "Pseudorabies In Swine," USDA/APHIS Program Aid No. 1301.

Pseudorabies is principally a disease of swine caused by a herpes virus.

Swine are the only known reservoir and the prime spreaders of the disease. The herpes virus family to which pseudorabies belongs is extensive, and most animal species are afflicted by one or more diseases caused by a herpes virus.

In humans, herpes viruses cause fever blisters, cold sores, genital herpes, chicken pox, and shingles. The pseudorabies virus, however, does not affect man and higher apes.

Pseudorabies is occasionally transmitted from swine to cattle,

sheep, dogs, cats, and wild animals, where it causes encephalitis, intense itching, self-mutilation, and death. Because sudden death is the rule, these animals play a limited role in the spread of the disease.

Symptoms in swine vary from an inapparent infection to sudden death. Severity is dependent on the age and immune status of the hogs, virulence of the viral strain, dose of the virus, and presence of concurrent infections.

**What Are The
Clinical Signs
In Swine?**

One of the insidious aspects of pseudorabies is that it may be present in a herd without showing clear, clinical signs.

Symptoms may be overlooked or mistaken for other diseases, especially in herds with some

immunity and no young pigs present.

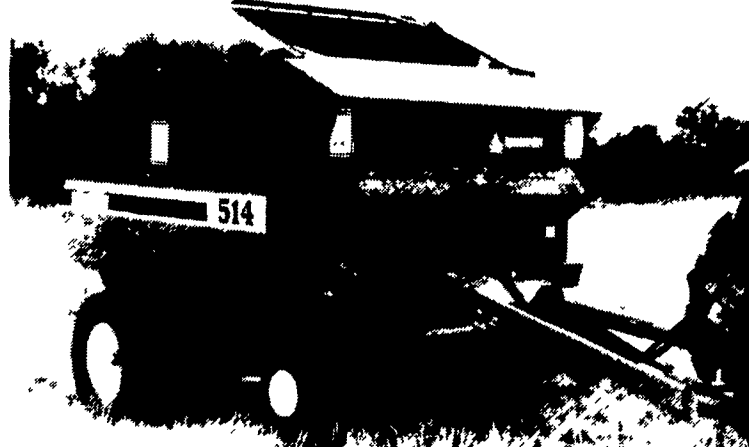
Pigs under three weeks of age may show loss of appetite, incoordination, depression, vomiting, nervousness, diarrhea, and convulsions, often followed by death of the entire litter. In older pigs, signs may include fever, loss of appetite, coughing, sneezing, pneumonia, convulsions, and occasionally blindness.

In sows, one may see reproductive problems, including abortion and stillborn or mummified pigs.

**Do All Exposed
Hogs Show Symptoms
Of The Disease?**

No. If sows were previously infected, their milk contains antibodies that protect the piglets during the critical early weeks. Protection by maternal antibodies gradually subsides, and pigs become susceptible between the ages of 10 and 16 weeks. Infections at this stage are frequently subclinical.

In older hogs, clinical signs may be absent, or flu-like symptoms may occur. Clinical signs are most prominent when infection is introduced into a susceptible herd while sows are farrowing. Since other species always show visible signs, a dead dog, cat, or raccoon near swine may be the first indication that a herd is infected.



The Hesston model 514 round baler produces weather-resistant bales, six feet in diameter and five feet wide. A low-profile design makes the model 514 easy to store and maneuver and provides an operator with good visibility in the field.

**Round Baler Easy
To Store, Maneuver**

ATLANTA, Ga. — AGCO Hesston's new 514 round baler combines the efficiency of fixed-chamber baling with easy operation, low maintenance, strong durability, and a consistently higher quality bale.

The Hesston model 514 round baler produces weather-resistant bales, six feet in diameter and five feet wide. A low-profile design makes the model 514 easy to store and maneuver and provides an operator with good visibility in the field.

An open-throat, fixed volume bale chamber permits crops to be fed directly through the 13 inch throat opening and then moved back to the forming belts in the

back of the chamber by five 11 inch bottom-forming belts. The control monitor for the electric tie is tractor mounted, allowing the operator to program twine tying speed. The model 514 can produce up to 24 bales or 18 tons/hour.

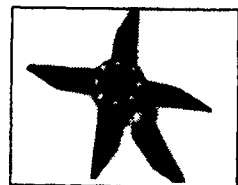
The 514 can be counted on to produce up to 24 top-quality 5-foot by 6-foot diameter bales per hour that are tightly packed on the outside to protect them from the weather with a soft center that allows ventilation and protects the feed value.

The Hesston 514 fixed-chamber round baler is available with either 540 or 1,000 RPM PTO speeds.

**~ ATTENTION ~
DAIRYMEN & LIVESTOCK PRODUCERS
A GOOD THING JUST GOT BETTER!
★ NEW FOR 1992 - BOLT ON TEETH ★**

FARMING FOR THE FUTURE with Aer-Way

➔ A new AERWAY can be your ticket to INCREASED PROFITS ➔ and help you comply to your conservation plan.



Helping Ranchers and Dairymen Make Better Hay and Pastures Throughout the Nation. UNIVERSITY TESTS SHOW

- AerWay-ing Pays
- Increases yield and quality
- Important part of intensive hay and pasture management
- Helps conserve valuable soil, fertilizer and water.
- Reduces compaction
- Improves manure management
- Reduces run-off
- Promotes extended stand life



"The year we ran the Aer-Way over half the land where we had harvested corn silage. We then spread between 4,000-5,000 gallons of liquid manure per acre and disked the seed bed to prepare for small grains. We were absolutely amazed at the difference where we used the Aer-Way and one disking. My non-Aer-Wayed ground was disked 3 to 4 times and still wasn't as good. I would recommend the Aer-Way to other farmers as it softens the ground and lets rain and manure penetrate instead of running off."
W.W. Sandford III -
Kenwood Farm, Orange, Virginia

"Earlier this spring, I used the Aer-Way Implement and Aer-Way chain harrow on my rolling pastureland. This was done to open up the ground to get water into the sloping grasslands. At the same time I pulled the Aer-Way chain harrow to scatter the cattle manure around. Even after the dry summer we had, I noticed that the Aer-Wayed ground held the moisture better and we got thicker and taller regrowth where we ran the machine."
Dr. Rex Wilhelm D.V.M., Stuart, Iowa



"I have better pastures since I started using the Aer-Way to aerate and renovate my pastures. Using the Aer-Way has helped me get the nutrients where they are needed. I would not recommend fertilizing or liming without running the Aer-Way first."
**Sandy Fisher, Brookview Farm - Beef Cattle Operation
Manakin-Sabot, Virginia**



FLEXIBLE CHAIN HARROW
One of the heaviest in the industry.
INTENSIVE GRAZING MAINTENANCE
PASTURE RENOVATION
SEED BED PREPARATION

- Yes, please send me free information about your:
- Flexible Chain Harrow
- Aer-Way Implement

AGRI-QUIP CORPORATION
3920 MARKET STREET, CAMP HILL, PA. 17011
1-800-228-8032

Strickler Metal Roofing

**SPECIALIZING IN
STANDING SEAM ROOFING**

ROLL FORMED PANELS FOR CONTINUOUS UNIFORM SEAMS Galvalume, Galvanized and other materials available.

Work approx. 80 mile radius of Lebanon, PA



CONCEALED FASTENERS
WATER TIGHT DOUBLE LOCK APPLICATION

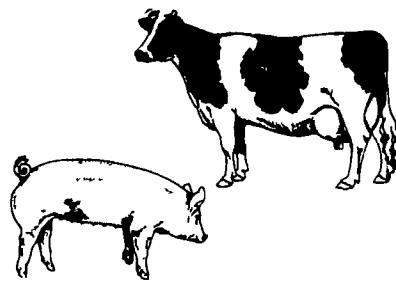
Route #2, Box 350-A
Annville, PA 17003
For Free Estimate Phone
717-865-3093

Problem Water?

Odor? Bad Taste? Stains? Iron? Manganese? Mineral Buildup? Color? Bacteria? Virus? Harmful Micro-organisms? Hydrogen Sulfide? THM Precursors? Other Contaminants?

Do You Have Any Problems With:

- * Scours
- * Digestion
- * Mastitis
- * Breeding
- * Small Litter Size
- * Too Much Medication
- * Milk Production
- * Poor Feed Efficiency
- * Algae in Drinking Cups
- * Bad Conception Rate



**Could Water Be Your Problem?
Complete Farm Water Treating
System**

A Farm Water System that is designed to clean the water on your farm with one of nature's most powerful purifying agents — Condensed Oxygen (Ozone).

OREGON
WATER CONDITIONING INC

335 Quarry Rd., Leola, Pa. 17540
717-656-8380