

NEW AT BINKLEY & HURST BROS.
FROM SUNFLOWER:

MODEL **4010/4110**

SUNFLOWER

COULTER RIPPER



Conservation
Tillage
Equipment
Built
SUNFLOWER
Tough!

Sunflower's Coulter Ripper is for today's conservation minded farmer demanding deep tillage with minimal residue disturbance. These durable machines feature adjustable front mounted coulters on 7 1/2" centers. The coulters blades have an added advantage of slicing hard ground to keep clod size to a minimum. The V-bar ripper design gives added trash clearance and pulls smoother than straight-bar rippers. These coulters rippers are built Sunflower tough and no ballast is added to the frame increasing the structural strength. Check out Sunflower's latest edition to its growing family of quality tillage equipment at a farm show or dealer near you.

Adjustable Coulter Gangs: The 4010/4110 both feature adjustable coulters gangs that can be raised completely in clean ground. Ratchet Jack Adjustment is standard equipment. Optional Hydraulic Gang Adjustment makes on the go changes or raising the coulters completely out of the way an easy task from the tractor seat.

Also...
3 Pt. Hitch Subsoiler Rippers For Hard Pan Deep-Till. SEE BINKLEY & HURST NOW!

WHY BUY A SUNFLOWER DISC HARROW?

The Reasons Are Obvious!
Sizes From 10'-15' And
18'-32' Folding

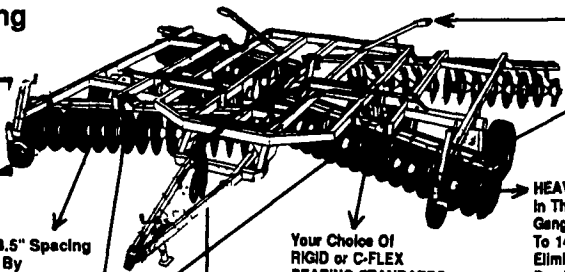
Check Out The Rest -
Then Buy The Best!
SUNFLOWER

WING GAUGE WHEELS
Eliminate Gouging

BLADES: 1/4 "x22" or 1/4 "x24" On 8.5" Spacing
3 Sided Blade Prevents Erosion By
Eliminating A Continuous Furrow

DOUBLE OFFSET DESIGN Provides Maximum
Leveling Without A Middle Buster Or Center Tooth

SELF-LEVELING
HITCH Maintains Level Setting Regardless Of Desired Depth Or Tillage Application



TRANSPORT WIDTH On
Wing Units Up To 24'2"
Working Width Is A
SAFE 12'4".

3 YEAR WARRANTY
On Triple Lip Sealed
Trunnion Mounted,
Regressable BEARINGS

HEAVIEST AXLE SHAFTS
In The Industry - 1 1/2" Dia.
Gangs Are Hydraulically Torqued
To 1400 Lbs. & Spring-Loaded To
Eliminate Loosening, Wear And
Breakage.

Your Choice Of
RIGID or C-FLEX
BEARING STANDARDS.

**CHECK OUT THIS SUPERIOR NEW
PRODUCT FROM SUNFLOWER!**

COULTER
CHISEL



8'9" to 18'9" Widths Available!

- New extended frame length for better trash clearance.
- Auto reset, trip
- Heavy duty 4"x6"x3/8" mainframe construction.
- Hydraulically controlled coulters gangs (optional) can be adjusted on the go or raised completely in clean soils.
- Walking tandems to better conform in uneven ground conditions.

**BINKLEY & HURST
BROS. INC.**

133 Rothsville Station Rd.
Lititz, PA 17543
(717) 626-4705

1-800-IT PAYS U



Farm Plan.
A Service of FPC Financial

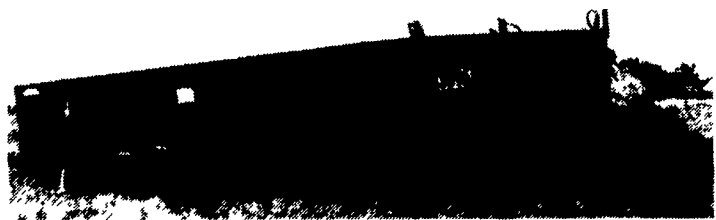
After Hours Emergency Parts Call: (717) 626-0885 (717) 626-5159 (717) 859-8768
Parts Dept. Hours: Mon., Tues., Thurs., Fri. 7 AM to 8 PM Wed. 7 AM to 5 PM Sat. 7 AM to Noon

★ **IN-SEASON SPECIAL** ★
VOLUME PURCHASE FROM MANUFACTURER
MEANS BIG SAVINGS PASSED ON TO

YOU!

CALL TODAY - **LOWEST PRICES EVER!**

Stationary Conveyor Box



BIG CAPACITY 10' x 16' x 32' conveyor box holds an average load allowing your truck to return to the field for another load. The Richardson Model 1016 Conveyor Box automatically and evenly feeds into the blower.

HYDRAULICALLY DRIVEN. For smooth troublefree operation

MINIMUM MAINTENANCE Pintle chains and chain drive are used throughout the drive assembly

EASY TO MOVE: Equipped with two-wheel axle, tongue, and jack

RUGGED CONSTRUCTION: Built into every Richardson product

VARIABLE SPEED DRIVE: Move the load forward to the beaters fast and then slow it down to feed your blower at just the right speed

AVAILABLE from factory in right- or left-hand delivery

SAFETY Stop the conveyor from any position by pulling the safety rope that runs the length of the front and the sides of the conveyor box

SPECIFICATIONS

Box Construction:
10' x 16' with 32" sides
14 ga. steel with tapered steel ribs
3/4" marine plywood floor

Cross Conveyor:
Chain slat 24" wide
Variable hydraulic speed control
24" hooded discharge, adjusts up to 40" high

Apron:
Dual, with steel slats
4 heavy duty pintle chains

Beaters:
Dual spiral type

Hydraulic Requirements:
Approximately 12 GPM at 1700 PSI

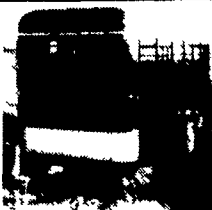
GOOD USED TANKERS



Call Us Now For Used Or
New Vacuum Tanker

- UM2115 Calumet 3750 Top Fill Tandem Axle With 540 PTO in Good Condition
- UM1958 Better Built 1500 Gallon Vacuum Tanker, Tandem Axle
- UM2037 1500 Gallon Single Axle Vacuum Tanker Honey Wagon

IF YOU NEED A
NEW STOCK
TRAILER AT A
REASONABLE
PRICE... SEE
BINKLEY & HURST!



7,000 GVW,
16' Long, 72" Wide,
6'9" High
IN STOCK
\$2,875
Ask For Amos Sr.

LOOK AT THIS! Before You Buy A New Homemade Wagon Running Gear... Check The Price On A McCurdy - The Factory Has Rolled Back Their Prices On Most Models, Plus Most Models Feature A 5 Year Warranty!



BUY UNVERFERTH McCURDY WAGONS FROM BINKLEY & HURST BROS., INC.

Running Gears



8 Ton Wagons Thru 18 Ton Wagons Have 5 Year Warranty -

from **Unverferth**

Stop In For Details!

CHECK OUT THIS NEW HARLO RENTAL UNIT AT REDUCED PRICES

FOR QUALITY FORKLIFTS WITH
SEE-THROUGH MASTS
YOU NEED A HARLO



For More Information Call Our Sales Department Now And Ask For Merv!

New Gehl 425 Box Spreader Tandem Axle, Hydraulic Endgate, Splashguard - Great Quality At A Good Price -

See Binkley & Hurst Soon!



New Gehl—
135
Box
Spreader

WESTFIELD
GRAIN AUGERS



Models W60, W70, W80, W100

SEE BINKLEY & HURST BROS. FOR ALL YOUR GRAIN AUGER NEEDS!

Call Or Stop In Now For What You Really Want In An Auger!

Several In Stock

BINKLEY & HURST BROS. INC. STOCKS DUAL WHEEL KITS & HARDWARE - SEE US FOR ALL YOUR NEEDS!

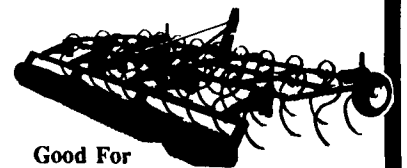
Unverferth Snap-Ons: more of what you're looking for

PLUS: AXLE MOUNT!

Unverferth's economical new S-tine cultivator teams rugged S-tines with an aggressive roller basket for thorough secondary tillage.



Get Secondary Tillage That's Effective And Affordable



Good For Alfalfa Seed Bed Preparation

Also Larger Wing Models Available!

**BINKLEY & HURST
BROS. INC.**

133 Rothsville Station Rd.
Lititz, PA 17543
(717) 626-4705

1-800-IT PAYS U



Farm Plan.
A Service of FPC Financial

After Hours Emergency Parts Call: (717) 626-0885 (717) 626-5159 (717) 859-8768
Parts Dept. Hours: Mon., Tues., Thurs., Fri. 7 AM to 8 PM Wed. 7 AM to 5 PM Sat. 7 AM to Noon