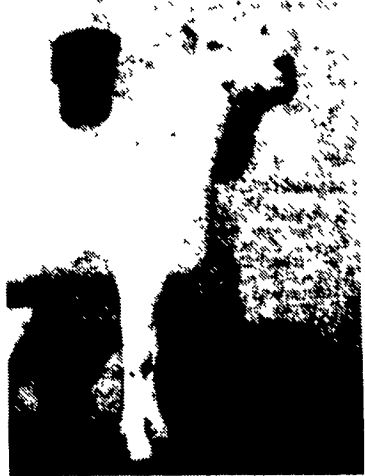


# KILE Sheep

(Continued from Page D7)

When he is not showing sheep, he likes sports, especially basketball.

A sixth grader from North Annville Elementary School,



Thomas Parry shows the Montadale champion ram.



Betty Hope shows grand champion Hampshire ewe.



Mike Carpenter shows the grand champion.



Ted Nixon shows the grand champion Dorset ewe.

11-year-old Laura Martin captured the grand champion ribbon during Corriedale sheep contest.

Martin, the daughter of Aaron and LuAnn Martin, who operate Martins Corriedales near Belle-grove, made her first appearance at KILE.

Laura took the title with her yearling ewe, "Sheeba," an animal that also captured ribbons at the 4-H Fair in Lebanon and earlier this year at the Pennsylvania State Farm Show. Laura has been showing sheep since she was 9 years old.

Laura is a member of 4-H, serving as secretary of the Lebanon County 4-H Sheep Club. She is also active at Steelstown EC Church and in Troop 17 of the Girl Scouts in Annville. At North Annville Elementary she plays the French horn in the school band.

Billy George Leib, an 11-year-old from Mechanicsburg, exhibited the champion Rambouillet ram, champion ewe and reserve champion ewe. In fact, he took first place in every class he entered during the show.

His champion ram, a yearling named "BG Leib 146," was also named reserve champion at the Big E in New England last month. Billy George's champion ewe, "BG Leib 180," was a spring ewe lamb and the reserve champion ewe, "BG Leib 159," is a fall ewe lamb.

For the second straight year, he was named premier breeder and premier exhibitor of the Rambouillet Show. He exhibited all four champions here last year (champion and reserve champion rams and ewes).

Now a sixth grader at Cumberland Valley Middle School West, Billy George is a member of the Conodoguinet Sheep Club in Cumberland County. He also plays soccer in the Monroe Township Soccer Association.

His parents, Suzie and Bob, own and operate Shepherd's Crook. They have about 30 Rambouillet brood ewes. It is a family business, although most of the sheep are owned by Billy.

He has enjoyed a lot of success at the Farm Show Complex since he first exhibited as a toddler. He showed the champion ewe, reserve champion ewe and reserve champion ram at the State Farm Show.

During the three consecutive years that a supreme champion has been named for Wool Breed Sheep at the Farm Show, the distinction — and the money — has gone to Billy George.

He has a den that is filled with all the plaques and ribbons he won during his short career. Most of his prize money goes to a college fund, and some goes toward replacement animals or other special interests.

Not only did local youth fair well at KILE. A railroad construction contractor from Kutztown, who is also a veteran sheep exhibitor, showed the grand champion

and reserve champion Shropshire W.E. Yoder, who operates W.E. Yoder Inc., a railroad construction business also operates Wey Shropshires, a 50-acre sheep and horse farm in Rockland Township, Berks County. Wey Shropshires was also named premier breeder.

Yoder has been exhibiting his sheep in livestock judging events for more than a decade. He is a familiar face at KILE and at the Pennsylvania State Farm Show.

Yoder's grand champion, "WS-9218" was also named grand champion at the Big E, a livestock exposition held September in Springfield, Mass.

A veteran livestock show exhibitor from Windsor Township showed the Grand Champion Cheviot ewe.

John Eaton, who operates Triple J Acres farm near Windsor, won the blue ribbon with his yearling ewe, "Maple Crest 9184."

Eaton has been an exhibitor at KILE and the Pennsylvania State Farm Show for nearly a decade. He began showing sheep when his son, John Jr., became active in 4-H.

Hyline Farm of Lakewood, N.J., exhibited the grand champion Columbia ram and ewe.

Shown by Mary Ann Johnson of Hyline Farm, Johnson 90-10 was awarded grand champion ram and Johnson 91-23 was grand champion ewe.

Johnson and her husband, Richard, who have been breeding sheep since 1979, have been exhibiting at KILE since 1983. They have been premier breeders of Columbia Sheep at KILE since 1988.

An 11-year old fifth grader from Frankford Elementary School exhibited the reserve grand champion Montadale sheep.

Zachary Reed, son of Tim Hocker and Donna Reed Hocker represented Sleepy Hollow Farm, his family farm in Upper Frankford Township, Cumberland County.

Zachary also exhibited his ram, "Basher," at the Perry County Fair, the Shippensburg Community Fair and the 4-H Roundup. Basher was named supreme grand champion at the Perry County Fair.

This was Reed's second competition at KILE. In addition to showing sheep, Reed is active in sports, and has played Little League Baseball and midget football.

**OPEN ROMNEY BREEDING SHEEP**  
Ram, Spring Lamb (Born 1-1-92 Or After)- 1. Springfield Farms; 2. Springfield Farm; 3. Rita Michalenko.

Pair Of Ram Lambs- 1. Springfield Farms; 2. Rita Michalenko; 3. Jaeme Lee Griffin.

Ram, 1 Year And Under 2- 1. Springfield Farms; 2. Jaeme Lee Griffin; 3. Rita Michalenko.

Champion Ram- Springfield Farms.

Reserve Champion Ram- Springfield Farms.

Ewe, Late Spring Lamb (Born February 15, 1992 And After)- 1. Springfield Farms; 2. Rita Michalenko; 3. Springfield Farms.

Ewe, Early Spring Lamb (Born January 1-February 15, 1992)- 1. Springfield Farms; 2. Springfield Farms; 3. Rita Michalenko.

Pair Of Ewe Lambs- 1. Springfield Farms; 2. Rita Michalenko; 3. Jaeme Lee Griffin.

Ewe, 1 Year And Under 2- 1. Springfield Farms; 2. Rita Michalenko; 3. Rita Michalenko.

Pair Of Yearling Ewes- 1. Rita Michalenko; 2. William Bankhead; 3. Springfield Farms.

Champion Ewe- Springfield Farms.

Reserve Champion Ewe- Rita Michalenko.

Exhibitors Flock- 1. Springfield Farms; 2. Rita Michalenko; 3. Jaeme Lee Griffin.

Premier Exhibitor- Springfield Farms.

Premier Breeder- Springfield Farms.



Jeff Repasky shows the champion Cheviot ram.



Bill Wade shows the champion Dorset ram.

**JUNIOR MONTADALE BREEDING SHEEP**  
Spring Ram Lamb- 1. David Cavey; 2. Alexandra Drenning; 3. Alexandra Drenning.  
Champion Ram- David Cavey.  
Reserve Champion Ram- Alexandra Drenning.  
Spring Ewe Lamb- 1. Alexandra Drenning; 2. Melissa Cavey; 3. Alexandra Drenning.  
Yearling Ewes- 1. David Cavey; 2. David Cavey; 3. Alexandra Drenning.  
Champion Ewe- David Cavey.  
Reserve Champion Ewe- David Cavey.

**CORRIEDALE OPEN BREEDING SHEEP**  
Ram, Spring Lamb (born 1/1/92 or after)- 1. K&K Corriedales; 2. Ruppert's Corriedales; 3. K&K Corriedales.  
Ram, Fall Lamb (born September thru December, 1991)- 1. K&K Corriedales; 2. Valley Lamb & Wool Co; 3. Kelly A. Glaser.  
Pair Of Ram Lambs- 1. K&K Corriedales; 2. Ruppert's Corriedales; 3. Ben & Mary Bow & Family.  
Ram, 1 Year And Under 2- 1. K&K Corriedales; 2. Mybar & Vesper Valley Farm; 3. Valley Lamb & Wool Co.  
Champion Ram- K&K Corriedales.  
Reserve Champion Ram- Mybar & Vesper Valley Farms.

Ewe, Late Spring Lamb (born February 15, 1992 and after)- 1. K&K Corriedales; 2. K&K Corriedales; 3. Laura E. Martin.  
Ewe, Early Spring Lamb (born January 1 thru February 15, 1992)- 1. Ruppert's Corriedales; 2. K&K Corriedales; 3. Ben & Mary Bow & Family.  
Ewe, Fall Lamb (born September thru December, 1991)- 1. Kelly Glaser; 2. K&K Corriedales; 3. Gerald Thoma.  
Pair Of Ewe Lambs- 1. K&K Corriedales; 2. Ben & Mary Bow & Family; 3. Kimberly A. Hopple.  
Ewe, 1 Year And Under 2- 1. K&K Corriedales; 2. Gerald Thoma; 3. K&K Corriedales.

Pair Of Yearling Ewes- 1. K&K Corriedales; 2. Kelly Glaser; 3. Kimberly A. Hopple.  
Champion Ewe- K&K Corriedales.  
Reserve Champion Ewe- Gerald Thoma.  
Exhibitor's Flock- 1. K&K Corriedales; 2. Kelly Glaser; 3. Kimberly A. Hopple.  
Premier Exhibitor- K&K Corriedales.  
Premier Breeder- K&K Corriedales.

**DORSET JUNIOR BREEDING SHEEP**  
Spring Ram Lamb- 1. Stacy L. Suffel; 2. Bob Wilson; 3. Stacy L. Suffel.  
Fall Ram Lamb- 1. Robert Wilson; 2. Christy M. Walther; 3. Sarah McCrumb.  
Champion Ram- Stacy L. Suffel.  
Reserve Champion Ram- Robert Wilson.  
Spring Ewe Lamb- 1. Stacy L. Suffel; 2. Bob Wilson; 3. Stacy L. Suffel.  
Fall Ewe Lamb- 1. Ted Nixon; 2. Stacy L. Suffel; 3. Christy M. Walther.

Yearling Ewes- 1. Ted Nixon; 2. Stacy L. Suffel; 3. Christine K. Baxter.  
Champion Ewe- Tex Nixon.  
Reserve Champion Ewe- Stacy L. Suffel.  
Junior Showmanship- Ted Nixon.  
Senior Showmanship- Robert Wilson.

**SUFFOLK JUNIOR BREEDING SHEEP**  
Spring Ram Lamb- 1. Matthew Nesselrodt; 2. Susan Wise; 3. Matthew Nesselrodt.  
Champion Ram- Matthew Nesselrodt.  
Reserve Champion Ram- Susan Wise.  
Spring Ewe Lamb- 1. Matthew Nesselrodt; 2. Susan Wise; 3. Lyn Lee Farms.  
Fall Ewe Lamb- 1. Amy Clair; 2. Jeffrey Bolinger.

Yearling Ewes- 1. Lyn Lee Farms; 2. Lyn Lee Farms; 3. Andrea Musser.  
Champion Ewe- Amy Clair.  
Reserve Champion Ewe- Amy Clair.  
Pennsylvania Junior Suffolk Association Junior Showmanship- 1. Susan Wise; 2. Dente Brashar; 3. Rachel Lawrence.

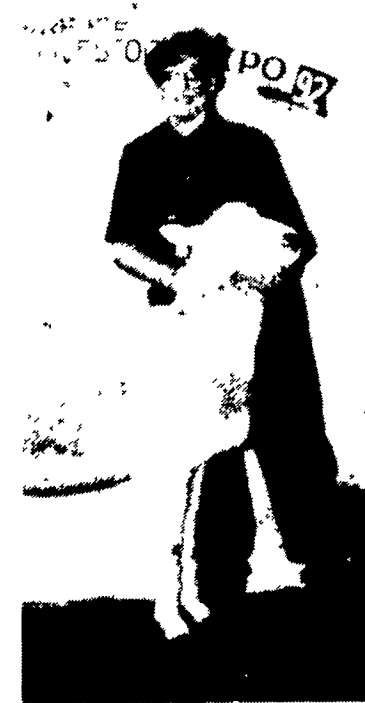
(Turn to Page D9)



Jason Blixer shows the grand champion Oxford ewe.



Liz Cavey shows the grand champion Montadale ewe.



Laura Martin shows the grand champion Corriedale ewe of the junior show.



Matt Nesselrodt shows the grand champion Suffolk ram of the junior show.



Cindy Bankhead shows the grand champion Romney ram.



Ron Miller shows the champion Shropshire ram.