



# Hog Markets

## Lancaster Hogs

Lancaster Stockyards  
Sat., Sept. 26, 1992  
Report supplied by auction

NO GRADE: 5 HEAD 130 LBS. 43.00.  
NEXT USDA GRADED FEEDER PIG  
SALE FRIDAY, OCT. 9. SALE TIME 1:30  
P.M. GRADING 7:30-11 A.M.

## Keister's Monthly Horse Sale

Last. Sat. Of Each Month  
Sept. 26, 1992

Report Supplied by Auction  
WORK HORSES 510.00-1550.00.  
DRIVING HORSES BEST  
1000.00-1700.00, MEDIUM AND  
SMALL 360.00-975.00.  
RIDING HORSES 320.00-860.00.  
MEAT HORSES LARGE  
600.00-740.00, SMALL 250.00-575.00.  
PONIES BEST 230.00-375.00, SMALL  
60.00-190.00.

450 HEAD.  
US 1-2 215-245 LBS. 42.50-43.00.  
US 1-2 215-245 LBS. 41.50-42.50.  
US 1-3 215-245 LBS. 40.50-41.50.  
US 2-4 215-255 LBS. 39.00-40.50.  
195-210 LBS. 36.00-38.50; 180-195  
LBS. 35.00-37.00; 120-180 LBS.  
33.00-36.00; 80-120 LBS. 35.00-42.00;  
50-80 LBS. 25.00-35.00; 30-50 LBS.  
20.00-35.00.  
SOWS: GOOD SOWS 31.00-33.00;  
MEDIUMS 29.00-31.00; THINS  
25.00-29.00.  
BOARS: HEAVY BOARS 28.50-29.50;  
LIGHT JUNIOR BOARS 30.00-32.00.

## Indiana Hogs

Louisville, Kentucky  
Wednesday, September 30, 1992  
INDIANA DIRECT HOGS 51 COM-  
PARED TUESDAY'S CLOSE:  
BARROWS AND GILTS STEADY,  
INSTANCES 25 HIGHER. RECEIPTS  
LIGHT AS FIELD WORK AND FARM  
PROGRESS SHOW IN FULL SWING.  
DEMAND MODERATE.  
COUNTRY: PLANTS: US 1-2 230-260  
LBS. 41.00-43.00, 41.50-42.75 SOME  
43.75-44.00. 210-230 LBS. 38.50-41.00.  
US 1-3 230-260 LBS. 40.50-42.00.  
SOWS: STEADY.  
US 1-3 300-500 LBS. 29.00-32.00.  
SEVERAL 30.00-31.00. 500-650 LBS.  
31.00-32.50, SOME 33.00.  
\*\*INDIANA DIRECT RECEIPTS:  
TUESDAY'S ACTUAL 23,400 TODAY'S  
ESTIMATE 19,500 WEDNESDAY  
WEEK AGO 23,100 WEDNESDAY  
YEAR AGO 21,700 WEEK TO DATE  
68,300 SM PD WEEK AGO 72,700 SM  
PD YEAR AGO 64,500.  
CARCASS BASIS HOG PRICES:  
MID-SOUTH DIRECT HOG TRADE  
HOT CAR-CASS VALUE INFORMATI-  
ON REPORT STARTED JULY 06,  
1992.

## State Graded Feeder Pig Sale

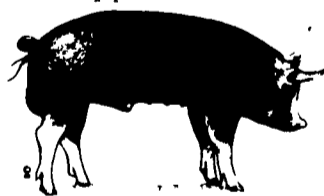
Carlisle Livestock Market, Inc.  
Friday, Sept. 25, 1992  
RESULTS ON 1303 PIGS.  
TREND: COMPARED TO SEPT. 11,  
STATE GRADED SALE PIGS WERE  
FIRM 5.00 HIGHER. ALL PIGS WERE  
WEIGHED ON ARRIVAL AND SOLD  
BY THE HUNDRED WEIGHT.  
US #1&2: 860 HEAD. 53 HEAD 29-33  
LBS. 70.00-75.00; 214 HEAD 41-49 LBS.  
62.00-72.00; 353 HEAD 50-59 LBS.  
62.00-71.00; 240 HEAD 61-69 LBS.  
60.00-67.00.  
US#2: 313 HEAD. 24 HEAD SMALL  
LOTS 24-39 LBS. 65.00; 103 HEAD 41-49  
LBS. 60.00-65.50; 185 HEAD 50-79 LBS.  
51.00-63.00; 1 HEAD 95 LBS. 48.00.  
US#2&3: 92 HEAD. 77 HEAD 32-59  
LBS. 40.00-50.00; 15 HEAD 69-79 LBS.  
34.00-42.00.  
AS IS: 18 HEAD, 23-58 LBS.  
10.00-40.00.  
UTILITY: 15 HEAD 17-47 LBS.  
14.00-20.00.

## New Holland Feeder Pigs

New Holland, PA  
Wed., Sept. 30, 1992  
Report Supplied by Auction  
TODAY: 703 HEAD  
LAST WEDNESDAY: 1399 HEAD  
LAST YEAR: 1050 HEAD  
TREND: COMPARED TO LAST  
WEDNESDAY, FEEDER PIGS FIRM TO  
5.00 HIGHER, INSTANCES 1.00 HIGH-  
ER ON US2. ALL PIGS WEIGHED ON  
ARRIVAL AND SOLD BY THE  
HUNDRED WEIGHT.  
US#1&2: 82 HEAD 33-39 LBS.  
66.00-81.00; 118 HEAD 40-49 LBS.  
58.00-64.00; 24 HEAD 49-52 LBS.  
70.00-72.00; 87 HEAD 54-57 LBS.  
56.00-63.00; 6 HEAD 68 LBS. 50.00.  
US#2: 43 HEAD 25-29 LBS.  
68.00-70.00; 14 HEAD 36 LBS. 54.00; 24  
HEAD 42-43 LBS. 48.00-54.00; 24 HEAD  
73-98 LBS. 42.00-46.00.  
US#2-3: 35 HEAD 30-39 LBS.  
33.00-36.00; 14 HEAD 42 LBS. 42.00; 69  
HEAD 50-59 LBS. 39.00-45.00; 16 HEAD  
64-82 LBS. 40.00.  
SLAUGHTER: 25 HEAD 20-23 LBS.  
82.00-100.00.

## New Holland Hog Auction

LANCASTER, PA  
SEPTEMBER 28, 1992  
HOG RECEIPTS  
TODAY 926  
LAST MONDAY 989  
LAST YEAR 1094  
TREND: Barrows and gilts steady to 50  
lower.  
BARROWS AND GILTS: US 1-2  
215-245 lb 41.50-42.50.  
US 1 215-235 lb 42.85-43.50, 9 head  
225 lb 46.00  
US 1-3 215-250 lb 40.00-41.00.  
US 2-3 one lot 280 lb 37.00.



# Hay & Grain Markets

## Good's Hay

Leola, Pa.  
Wed., Sept. 30, 1992  
Report Supplied by Auction  
TOTAL LOADS: 81.  
MIXED HAY: 70.00-145.00.  
ALFALFA: 76.00-123.00.  
STRAW: 65.00-88.00.  
TIMOTHY: 80.00-152.00.  
CORN: 69.00-96.00.  
GRASS: 65.00-81.00.  
STUBBLE HAY: 81.00.  
OATS: 1.70-2.00 BU.

## Frederick Co. Hay

Buckeystown, Md.  
Thursday, Oct. 1, 1992  
Report Supplied by Auction  
7 LOADS. WEATHER SUNNY,  
DEMAND STRONG.  
ALFALFA: 82.50-100.00.  
TIMOTHY: 105.00.  
GRASS HAY: 80.00.  
ORCHARD GRASS: 1.50 BALE.  
RYE: 3.50 BU.

## Westminster Hay

Westminster, Md.  
Tuesday, Sept. 29, 1992  
Report Supplied by Auction  
TOTAL LOADS: 85.  
ALFALFA: 1.30-3.00 BALE.  
TIMOTHY: 102.00-112.00, .80-2.00  
BALE.  
CLOVER: 1.20-1.50 BALE.  
MIXED HAY: .80-2.60 BALE,  
13.00-16.00 LARGE ROUND BALE.  
GRASS: .75-1.75 BALE.  
STRAW: .50-1.50 BALE.  
RYE: 1.50 BU.

## Keister's Hay

Middleburg, PA  
Sept. 22, 1992  
Report supplied by auction  
11 LOADS OF HAY.  
MIXED HAY: 50.00-105.00.  
ALFALFA: 110.00.  
STRAW: 2 LOADS, 75.00.  
EAR CORN: 17 LOADS, 75.00-95.00.  
RYE: 16 LOADS, 1.00-2.25 BU.  
OATS: 3 LOADS, 1.10-1.60 BU.

## Kirkwood Hay Auction

Kirkwood, Pa.  
Tuesday, Sept. 29, 1992  
Report Supplied by Auction  
26 LOADS OF HAY.  
TIMOTHY: 92.00-120.00.  
ALFALFA: 1ST CUTTING  
68.00-70.00; 3RD CUTTING  
90.00-105.00.  
GRASS: 92.00-130.00.  
WHEAT STRAW: 72.00-111.00.  
OAT STRAW: 20.00-60.00.  
BARLEY STRAW: 76.00.  
RYE STRAW: 75.00.  
OATS: 2.00 BU.  
RYE: 4.10 BU.  
SALE TIME 11 A.M.

## Green Dragon Hay

Ephrata, Pa.  
Friday, Sept. 25, 1992  
Report Supplied by Auction  
TOTAL LOADS: 84.  
MIXED HAY: 63.00-120.00.  
ALFALFA: 59.00-120.00.  
TIMOTHY: 80.00-155.00.  
CLOVER: 87.00.  
FIREWOOD: 25.00 AND 39.00 LOAD.  
GRASS HAY: 79.00.  
STRAW: 58.00-95.00.  
EAR CORN: 64.00-92.00.  
RYE SEED: 2.00-3.00 BU.  
OATS: 1.35-2.10 BU.  
TIMOTHY SEED: 25.00 BU.

## Leinbach's Hay

Shippensburg, PA  
Sept. 26 and 29  
Report Supplied by Auction  
27 LOADS.  
ALFALFA: 59.00-100.00.  
MIXED HAY: 45.00-107.00.  
CLOVER: 72.50-80.00.  
BROME GRASS: 50.00-87.00.  
STRAW: 40.00-44.00.  
EAR CORN: 107.00.  
MULCH HAY: 12.50-40.00.  
OATS: 1.50-1.60 BU.  
RYE: 3.75 BU.

## Diffenbach Auction Center

New Holland, Pa.  
Monday, September 28, 1992  
Report Supplied by Auction  
TOTAL LOADS: 122.  
ALFALFA: 70.00-115.00.  
MIXED HAY: 48.00-155.00.  
TIMOTHY: 84.00-160.00.  
ORCHARD GRASS: 70.00-112.00.  
STRAW: 67.00-105.00.  
EAR CORN: 65.00-93.00.  
OATS: 1.85-2.50 BU.  
RYE: 2.35-4.00 BU.  
This sale was formerly held at the New  
Holland Sales Stables. It is now held at Dif-  
fenbach's New Holland Auction Center  
Ltd., 100 W. Jackson St., New Holland,  
across from the prior sale location. Auction  
time is 10:00 a.m. Monday.

## North Jersey Market

Hackettstown, N.J.  
Tuesday, Sept. 29, 1992  
Hay—Straw & Grain Report  
MIXED HAY: 1.90-2.50 BALE.  
GRASS HAY: 2.40 BALE.  
GROUND CORN: 4.00-5.35 BAG.  
OATS: 7.25 BAG.  
RYE: 6.25 BAG.  
TOTAL: 13 LOTS.

## Dewart Hay

Dewart, PA.  
Monday, Sept. 28, 1992  
Report Supplied by Auction  
7 LOADS OF HAY, 81.00-101.00.  
WOOD: 35.00 LOAD.  
CORN: 3 LOADS, 90.00-94.00.

## Regional Hay

September 28, 1992  
Eastern, Pa.  
HAY & STRAW MARKET FOR  
EASTERN PA - (ALL HAY NO 2 AND  
BETTER, PRICES PAID BY DEALERS  
AT THE FARM & PER TON). HAY AND  
STRAW STEADY.  
ALFALFA 75.00-110.00; MIXED  
HAY 70.00-120.00; TIMOTHY HAY  
60.00-110.00, FEW REPORTED 120.00,  
STRAW 40.00-80.00, MULCH  
20.00-40.00

SUMMARY OF LANCASTER CO.  
HAY AUCTIONS FOR WEEK ENDING  
9/25/92. PRICES PER TON: LOADS 144  
HAY, 39 STRAW, & 56 EAR CORN  
ALFALFA 82.00-137.00; MIXED  
HAY 70.00-120.00; TIMOTHY HAY  
87.00-142.00; STRAW 50.00-87.00, EAR  
CORN 80.00-102.00.

SUMMARY OF CENTRAL PA.  
HAY AUCTIONS FOR WEEK ENDING  
9/25/92. PRICES PER TON: LOADS: 71  
HAY, 13 STRAW & 25 EAR CORN  
ALFALFA 70.00-100.00; MIXED  
HAY 50.00-122.00; STRAW 40.00-90.00,  
EAR CORN 65.00-105.00

## Vintage Hay

Paradise, PA  
Thurs., Oct. 1, 1992  
Report Supplied by Auction  
6 LOADS.  
GRASS HAY: 57.50-95.00.  
ALFALFA: 100.00.  
WHEAT STRAW: 100.00.

## Belleville Hay

Wednesday, Sept. 30  
Belleville, PA  
Report Supplied by Auction  
24 LOADS OF HAY.  
ALFALFA: 70.00-105.00.  
MIXED HAY: 55.00-117.50.  
STRAW: 6 LOADS, 30.00-70.00.

## North Jersey Livestock

Hackettstown, NJ  
Tuesday, Sept. 29, 1992  
Report supplied by auction  
CALVES .30-1.95.  
COWS .32-55.  
EASY COWS .19-.43% .  
HEIFERS .39% .63.  
BULLS .48% .65% .  
STEERS .46% .71% .  
HOGS .29-.41.  
ROASTING PIGS EACH 15.00-28.00.  
BOARS .26% .27%  
SOWS .30-.31% .  
SHEEP .15-.55.  
LAMBS EACH 21.00-52.00.  
LAMBS PER LB. .30-.83.  
GOATS EACH 4.00-89.00.  
KIDS EACH 5.00-61.00.  
TOTAL 1494.

Walter M. Dunlap and Sons offers all cattle  
feeders two marketing days - Give us a call for  
advice and marketing conditions.

**MONDAYS OR WEDNESDAYS**

Consign With Us - For The Marketing Edge

Consign Your Beef Cows  
Mondays and Wednesdays  
No Waiting to Unload - Good Weight Conditions

Next Feeder Cattle Sale  
Friday, Oct. 9 - 11:00 A.M.

Walter M. Dunlap and Sons  
Lancaster Stockyards  
Tel. (717) 397-5136

An Old Line Commission Firm Keeping  
Abreast With The Times

## PIGS

STATE GRADED SALE  
FRI., OCT. 9  
1:30 P.M.

AT  
**Carlisle**

LIVESTOCK MARKET, INC.  
Exit 12 Off I-81  
(717) 249-4511 or  
Evenings Jim, 249-2359

KIRKWOOD  
HAY AUCTION  
Hay, Straw and  
Grain Auction  
EVERY TUESDAY

11:00  
Located Rt. 472 5 miles  
south of Quarryville or 6  
miles north of Oxford cor-  
ner of Rt. 472 and Noble  
Road.

Lloyd H. Kreider,  
Auctioneer  
AU-000513L  
No out of state checks

## In This Issue

### COLUMNS

Now is the Time.....A10  
On Being A Farm Wife.....B 7  
Have You Heard.....B14  
Ida's Notebook.....B15  
Poultry Pointers.....C 5, D10  
Swine Management.....C16

### DAIRY

Mid-Atlantic Dairy Show.....A25  
DHIA Focus.....A26  
Reading Dairy Show.....C 8  
DHIA Highest Protein.....C13  
DHIA Lowest SCC.....D 3  
All American Dairy.....D 5

### YOUTH AND YOUTH

Homestead Notes.....B 2  
Home On The Range.....B 6  
Cook's Question Corner.....B 8  
Kid's Korner.....B10  
Farm Women.....B16

### DEPARTMENTS

Editorial.....A10  
Farm Calendar.....A10  
Mailbox Markets.....B17  
Sale Reports.....B22  
Public Auction Register.....B30  
Business News.....C 6  
Classified Ads.....C17, D11

### FEATURES

New Holland Swine.....A30  
New Holland Sheep.....A38  
Bollinger Family.....B 2  
Stoltzfus Family.....B 2  
Country Charm.....B 5  
Bush Co-chair.....B 9  
Mum Farm.....B12  
Grange Cookery.....B14  
Food Judging.....B26  
Reading Beef Show.....C 4  
Reading Hog Show.....C12  
Hereford Show.....D 7