

**Greencastle Livestock**

Greencastle, Pa.

Monday, Sept. 14, 1992

SLAUGHTER CATTLE RECEIPTS: 751 HEAD.

SLAUGHTER STEERS: 190 HD TREND: STEADY TO 2.00 LOWER. HIGH CHOICE AND PRIME 2-4 73 00-75 75; CHOICE 2-3 950-1075 LBS. 68.00-71.75; CHOICE 2-3 OVER 1375 LBS. 66 00-71.00; CHOICE 4 ALL WEIGHTS 63.00-68.75; SELECT & CHOICE 1-2 950-1100 LBS 65 00-70 75, SELECT & CHOICE 1-2 1100-1375 LBS. 65 00-71 50; SELECT & CHOICE 1-2 OVER 1375 LBS. 62.00-67.00

HOLSTEINS: CHOICE 2-3 1050-1450 LBS 60.00-66.50; SELECT 1-2 1050-1450 LBS. 55.00-60.00

SLAUGHTER HEIFERS: 90 HD TREND: STEADY TO 2.00 LOWER CHOICE 2-3 850-1000 LBS. 63 00-70 00, CHOICE 2-3 1000-1250 LBS. 66 50-74.00; CHOICE 4 ALL WEIGHTS 62 00-68.75; SELECT & CHOICE 1-2 850-1000 LBS. 63.00-69.00; SELECT & CHOICE 1-2 1000-1250 LBS. 63 00-70.50.

HOLSTEINS: CHOICE 2-3 1000-1350 LBS 59.00-64.50; SELECT & CHOICE 1-2 1000-1350 LBS. 55.00-58.50

SLAUGHTER BULLS: 64 HD. TREND: STEADY TO 2.00 LOWER YIELD GRADE 1 ALL WEIGHTS 59 00-67.50; YIELD GRADE 2 ALL WEIGHTS 54.50-59.00.

BULLOCKS: 18 HEAD. CHOICE 1-3 950-1150 LBS. 60.00-65 00, 1150-1375 LBS. 60 00-64.50; SELECT 1-2 950-1250 LBS. 62.00-69.50.

COWS: 389 HD. TREND: STEADY BREAKING UTILITY & COMMERCIAL 47 00-53 50; CUTTER & BONING UTILITY 47.50-52 50; CANNER & LOW CUTTER 47.00 & DOWN.

STOCKER & FEEDER CATTLE RECEIPTS: 214 HD. TREND. STEADY. BEEF TYPES: 200-400 LBS STEERS 89 00-110 00, BULLS 81.00-106 00, HEIFERS 74.00-91.00, 400-600 LBS STEERS 77.00-91 00, BULLS 74 00-81 00, HEIFERS 69 00-79 00, 600-800 LBS STEERS 72 00-87 00, BULLS 68 00-76 00, HEIFERS 68 00-74 50, 800-975 LBS STEERS 68 00-76 00, BULLS 60 00-67 00, HEIF-

ERS 61.00-70.00.

HOLSTEINS AND DAIRY CROSS: 200-400 LBS. STEERS 70 00-81.00, BULLS 65 00-75.50, HEIFERS 75.00-110.00; 400-600 LBS STEERS 64 00-74 00, BULLS 60 00-68.00, HEIFERS 70 00-87 00, 600-800 LBS STEERS 60.00-68 00, BULLS 57.00-62 50, HEIFERS 60.00-70.00; 800-975 LB STEERS 54 50-62 50, BULLS 54 00-60 00, HEIFERS 58 00-64.00

CALVES: 1003 HD VEAL CALVES TREND: STEADY TO STRONGER CHOICE 150-300 LBS. 90 00-105 00, GOOD 150-300 LBS 80 00-95 00, GOOD 100-150 LBS 70 00-85 00, GOOD 80-100 LBS 55 00-75 00, STANDARD 80-100 LBS. 50 00-65 00; STANDARD 80 LBS & DOWN 50 00-DOWN.

CALVES RETURNING TO THE FARM: TREND: STEADY TO STRONGER HOLSTEIN BULLS OVER 100 LBS UP TO 154 00, UNDER 100 LBS. UP TO 145.00, HOLSTEIN HEIFERS OVER 100 LBS. 230 00; UNDER 100 LBS. 210.00, BEEF TYPE BULLS OVER 90 LBS 170 00; BEEF TYPE HEIFERS OVER 90 LBS. 155.00

SHEEP & LAMBS: 130 HD LAMBS TREND: 2 00 LOWER. CHOICE 80-100 LBS. 45 00-50.00; 100-120 LBS 44.00-50.00; 120 AND OVER 39.00-45.50, MEDIUM & GOOD ALL WEIGHTS 47 00-50 00, LIGHT LAMBS 50.00-67 00

SHEEP: EWES LEAN 20.00-30.00; EWES FAT 20 00-26.00, YEARLINGS 29.00-37.00, BUCKS 20.00-27.00.

GOATS: 219 HD. SMALL 10.00-20.00; MEDIUM 22.00-57.00; LARGE 58 00-100 00

HOGS, SOWS & BOARS: 121 HD TREND: 1.00 LOWER. HOGS, BARROWS & GILTS: 210-250 LBS 38 50-41 00; 250-260 LBS 39 00-39.50; 260-270 LBS 37 00-38.50, 270-300 LBS. 35 00-37.00.

LIGHT HOGS. 140-180 LBS. 33.00-40.00, 180-210 LBS 32.00-37.50. SOWS TREND: 1 00 LOWER. GOOD SOWS UNDER 400 LBS 30 00-32 50; GOOD SOWS OVER 400 LBS 30.00-33 00; CULL SOWS ALL WEIGHTS 29 00 & DOWN

BOARS TREND 1 00 LOWER 180-210 LBS 29 00-33 00, 210-260 LBS 30 00-35 00, 260-300 LBS 28 00-30 50, 300 LBS & OVER 28 00

SALE EVERY MONDAY AT 2 00

P.M. & EVERY THURSDAY AT 1:00 P.M.

HAY & STRAW SALE EVERY MONDAY & THURSDAY AT 11:30 A.M. SPECIAL FEEDER CATTLE SALE FRIDAY, OCT 2, 1992, AT 7:15 P.M. SPECIAL FEEDER PIG SALE. SATURDAY, SEPT. 26, AT 1 00 P.M.

**Oklahoma City Feeder Cattle**

Oklahoma City, Okla.

Wednesday, September 16, 1992

**\*\*Attention Dodge City\*\***  
OKLAHOMA NATIONAL STOCKYARDS WEEKLY CATTLE SUMMARY.

Compared to last valid test two weeks ago: Steers over 600 lbs. firm to \$1.00 higher. Heifers over 600 lbs. steady. Steers and heifers under 600 lbs. weak to \$2.00 lower. Demand good for cattle destined to feedlots despite excessively full weigh conditions of most cattle. Demand rather light for calves as farmers full attention is on wheat planting during this unusual week of open weather. Slaughter cows, Breakers \$.50 to \$1.00 lower. Canner through Boning Utility \$1.50-\$2.50 lower. Slaughter cow demand closed light. Replacement cow demand good. Slaughter bulls steady. Bull demand moderate. Receipts this week 11,522; last week 2,357; last year 7,283. Supply consisted of 62% yearlings over 600 lbs.; 33% calves; 5% cows and bulls. Bulk prices follow; weighted average prices in parenthesis:

Feeder Steers: Medium and Large Frame 1, 300-400 lbs. \$105.50-\$114.50 (\$109.10); 400-450 lbs. \$99.00-\$107.75 (\$102.20); 450-500 lbs. \$94.00-\$100.00

(\$96.27); 500-550 lbs. \$90.00-\$98.00 (\$94.79); 550-600 lbs. \$87.50-\$96.50 (\$92.53); 600-700 lbs. \$85.00-\$90.00 (\$87.74); 700-750 lbs. \$84.00-\$88.00 (\$85.96); 750-800 lbs. \$83.00-\$86.75 (\$84.26); 800-900 lbs. \$79.50-\$84.50 (\$81.93); 900-975 lbs. \$77.25-\$81.50 (\$78.81). Large Frame 2 Holsteins, 275-350 lbs. \$92.50-\$96.50; 400-500 lbs. \$82.25-\$90.00; 500-575 lbs. \$77.25-\$82.50; 600-700 lbs. \$73.00-\$76.75; 700-775 lbs. \$71.00-\$71.25; 850-925 lbs. \$67.00-\$67.25.

Feeder Heifers: Medium and Large Frame 1, 300-425 lbs. \$92.00-\$98.50 (\$96.44); 425-500 lbs. \$84.00-\$91.50 (\$87.41); 500-600 lbs. \$82.00-\$87.50 (\$84.19); 600-650 lbs. \$81.25-\$86.00 (\$82.90); 650-700 lbs. \$79.00-\$83.00 (\$81.97); 700-750 lbs. \$78.50-\$83.00 (\$80.57); 750-800 lbs. \$77.75-\$80.00 (\$78.63); 800-850 lbs. \$79.25-\$80.00; 850-950 lbs. \$72.00-\$75.00. Replacement Heifers: Brangus and BWF 410-505 lbs. \$91.00-\$97.00.

Slaughter Cows: Cutter, Boning Utility and Breaking Utility Y.G. 1-4 average dressing \$44.00-\$47.50; high dressing \$46.50-\$49.25; low dressing \$40.00-\$44.00. Canner \$35.00-\$40.00.

Slaughter Bulls: Y.G. 1-2 1175-2100 lbs. average dressing \$56.50-\$60.00; high dressing \$60.00-\$62.00; high dressing/high boning \$66.00; low dressing or thin \$53.00-\$56.50.

**Lebanon Valley Livestock Auction**

Fredericksburg, Pa.

Tuesday, September 15, 1992

Report Supplied by PDA

CATTLE 147... PDA ... STEERS: Two

Choice 71.00 & 74.00, one Select 65.00. HOLSTEINS: Two Choice 67.50 & 69.25, two Select 60.00 & 66.75, few Standard 55.00-60.00. HEIFERS: Two Choice heifers 66.75 & 68.50, few Choice 4-5 850/855 lbs. 61.00-65.75, one Select Holstein 58.75, few Select 62.50-67.75. COWS: Breaking Utility and Commercial 47.75-51.00, few high dressing 54.00, Cutter and Boning Utility 45.00-49.25, few high dressing 53.25, Canner & Low Cutter 41.75-45.00. Shells down to 32.00. BULLOCKS: Few Standard 55.00-57.25 BULLS: Few Yield Grade No. 1, 1395/1580 lbs. 57.25-61.00; one Low Yield 53.25.

CALVES 168.... VEALERS: Few Standard and Good 70/110 lbs. 50.00-67.00, Utility 50/75 lbs. 30.00-47.00 RETURNED TO FARM: No. 1 Holstein bulls 90/120 lbs. 125.00-157.00, No. 2 80/110 lbs. 95.00-135.00, few down to 75.00. Few No. 1 Holstein heifers 85/100 lbs. 140.00-150.00. Few No. 2 70/80 lbs. 60.00-82.00.

HOGS 71.... BARROWS AND GILTS: Lot US 1-2 245 lbs. 43.50, few 1-3 255/265 lbs. 40.50-41.00, few 2-3 218/290 lbs. 38.50-39.75. SOWS: US 1-3 375/585 lbs. 28.75-33.00, mostly 31.00-32.00, few Medium 385/505 lbs. 20 50-25 00 BOARS: Two Boars 28 00 & 29 00

FEEDER PIGS 0...No market test SHEEP 2...One Choice Spring Slaughter lamb at 47.00. One Yearling at 37 00

GOATS 4 One Large Billy at 67 00, few Medium 50 00-- per head.

**Notice**

The Frederick Co., MD Hay and Straw Auction will reopen

Thursday, Oct. 1 at 12 Noon Same location and continues every Thurs. thru May, 1993.

Mullinix Grain and Fertilizer 3810 Ballinger Creek Pike Frederick, MD

Site of Willowdale Auction Co. Dan Poole, Manager (301) 473-8100



• Market Hogs  
• Sows • Boars  
• Cull Pigs

NOW RECEIVING:  
Mon. 6:30-11 a.m.  
Sat. 6:30-10 a.m.

All market hogs received at receiving station must be scheduled one week in advance



Rt. 897 - 1 mile North of Fivepointville (215) 445-5776 • FAX (215) 445-6099

**FALL HEIFER SALE**

SAT., SEPT. 26 10:00 A.M.

HORSE SALE OCT. 16, 1992 7:00 P.M.

**NEW HOLLAND SALES STABLES INC. THE ACTION AUCTION**

LIVESTOCK IS OUR ONLY BUSINESS

DAIRY SALE WED., SEPT. 23

Coloson Farm Jersey Dispersal  
Turnsdale Farm Holstein Dispersal

Reg. Fresh Heifers from Lloyd Potter

See Page B50 For Details

**MONDAY**

SLAUGHTER HOGS



EARLY BIRD HOG SALE 8:00 A.M.

Sell Your Hogs At New Holland Sales Stables, Inc. See them weighed, sold and pickup your check.

10:00 A.M.



HORSES MULES



1:30 P.M.

BEEF SALE SHEEP GOATS CALVES



**WEDNESDAY**

HEIFER SALE

11:00 A.M.

COW SALE 12:00 NOON

HEIFERS BULLS



DAIRY COWS

We have the usual run of 50 to 100 Heifers, all ages. Loads of fresh cows and springers from our regular shippers. Also some local fresh cows and springers.

1:30 P.M.

FEEDER PIG SALE



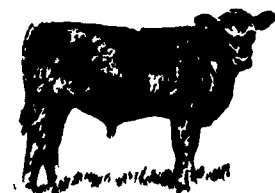
Pigs are accepted after 6:30 A.M. State graded from 8 to 12. Dairy Barn and Feeder Pig Barn are cleaned and disinfected weekly for your protection.

**THURSDAY**

Beef Auction

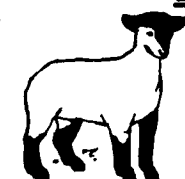
10:00 A.M.

BULLS STEERS BEEF COWS



1:00 P.M. STOCKERS & FEEDERS

12:00 NOON



SHEEP GOATS CALVES



**NEW HOLLAND SALES STABLES, INC.**

12 Miles East of Lancaster Off Route 23, New Holland, Penna.

**MANAGERS**

Norman & David Kolb - 717-397-5538

**Field Representatives**

Luke Eberly - 215-267-6608 738-1865

Homer Eberly - 215-267-3047

Ron Ranck - 717-656-9849

Sale Barn Office Manager Roger Floyd - 717-354-4341 FAX # 717-355-0706

Order Buyer Paul Good - 215-445-6662