

Estimated Daily Livestock Slaughter

Under Federal Inspection

Sept. 16, 1992

	CATTLE	CALVES	HOGS	SHEEP
WEDNESDAY (EST)	124,000	5,000	349,000	23,000
WEEK AGO (EST)	125,000	6,000	348,000	23,000
YEAR AGO (ACT)	126,000	5,000	319,000	23,000
WEEK TO DATE (EST)	364,000	16,000	1,036,000	67,000
SAME PD LT WK (EST)	249,000	12,000	711,000	47,000
SAME PD LT YR (ACT)	354,000	18,000	967,000	68,000

PREVIOUS DAY ESTIMATED TUESDAY STEER AND HEIFER 100,000; COW & BULL 24,000.

Central U.S. Carlot

Beef Report
Sept. 16, 1992

Report supplied by USDA

CENTRAL U.S. CARLOT BEEF REPORT (INCLUDES THE MAJOR PRODUCTION AREAS IN THE MIDWEST AND TEXAS) AS OF 3 P.M. COMPARED TO WEDNESDAY'S 3 P.M. REPORT: UTILITY CARCASSES GENERALLY STEADY; CUTTER NOT

ESTABLISHED. DEMAND AND OFFERINGS LIGHT TO MODERATE. COW AND BULL CARCASSES

FOB OMAHA BASIS
10 LOADS REPORTED
UT, BRK 2-4, 450 & UP, 3 LOADS, RANGE 78.50-79.50, LATEST ESTB. MKT. 78.50-79.50.
UT, BNG 1-3, 400 & UP, 7 LOADS, RANGE 82.00-83.00, LATEST ESTB. MKT. 82.00-82.50.
CUTTER 1-2 350 & UP, LATEST ESTB. MKT. 91.00 A.

BULLS 500/UP, YG 1, LATEST ESTB. MKT. 99.00 B.

BONELESS PROCESSING BEEF/ BEEF TRIMMINGS

124 LOADS REPORTED
FRESH 90% BONELESS BEEF IN THE MIDWEST, GENERALLY STEADY, BUT IN TEXAS, 1.50-2.00 LOWER THAN LAST TEST. DEMAND FAIRLY LIGHT FOR LIGHT TO MODERATE OFFERINGS. BEEF TRIMMINGS STEADY TO FIRM ON LIGHT TO MODERATE DEMAND AND OFFERINGS.

FOB OMAHA BASIS
90% FRESH, 15 LOADS, RANGE 117.0-118.0, WT. AVG. 117.80.
90% FZ, 7 LOADS, RANGE 118.0-121.5, WT. AVG. 120.21.
85% FRESH, 1 LOAD, RANGE 113.0, WT. AVG. 113.00.
85% FZ, UNQUOTED.
75% FR, RANGE 91.0, WT. AVG. 91.00 D.
75% FZ, UNQUOTED.
65% FRESH, 1 LOAD, RANGE 72.0, WT. AVG. 72.00.
65% FZ, UNQUOTED.
50% FR, 68 LOADS, RANGE 45.00-47.00, WT. AVG. 46.06.

50% FZ, 5 LOADS, RANGE 48.00, WT. AVG. 48.00.

50% BX, 1 LOAD, RANGE 145.0, WT. AVG. 145.00.

BULL 92-94, 1 LOAD, RANGE 145.00, WT. AVG. 145.00.

FOB EAST TX AND OK:
90% FR, 12 LOADS, RANGE 117.5-118.5, WT. AVG. 118.25.

90% FZ, 85% FR, 85% FZ, UNQUOTED.

75% FR-65% FZ, UNQUOTED.

CAF NORTHEAST AREAS:
90% FR, 9 LOADS, RANGE 120.0, WT. AVG. 120.00.

90% FZ, UNQUOTED.

85% FR, 4 LOADS, RANGE 112.0, WT. AVG. 112.00.

85% FZ, 75% FR, 75% FZ, 65% FR, 65% FZ, UNQUOTED.

ABCDE AFTER QUOTES REPRESENTS DAYS SINCE LAST ACTUAWL MARKET TEST. QUOTES ARE DROPPED AFTER 5 DAYS OF NO TEST OR BEFORE IF THEY NO LONGER REFLECT CURRENT MARKET CONDITIONS.

BULLOCKS: CHOICE 59.00-61.75, SELECT 54.50-59.00.

BULLS: YG#1 60.00-62.00.

CALVES, 81. GOOD 75-110 LBS. 70.00-90.00; STANDARD & GOOD 40-80 LBS. 40.00-70.00; HOLSTEIN BULLS 90-120 LBS. 120.00-150.00; #2 85-140 LBS. 95.50-120.00; HOLSTEIN HEIFERS 90-120 LBS. 140-170. TOP BEEF BULL AT 105 LBS. 170.00. TOP BEEF HEIFER 90 LBS. 135.00.

HOGS: 137. BARROWS AND GILTS US#1-2 230-250 LBS. 41.25-42.50; US#1-3 225-240 LBS. 39.25-41.50.

SOWS US#1-3 350-700 LBS. 29.50-37.00.

BOARS: 26.50-33.00.

FEEDER PIGS: 40-60 LBS. AT 18.00-24.00.

Isenock Auction

New Park, PA

Sept. 14, 1992

Report supplied by auction

SLAUGHTER COWS: 50.00 & DOWN.

SLAUGHTER HEIFERS; 1205-1405 LBS. 61.00-62.25.

FEEDER HEIFERS; 765-940 LBS. 63.75-69.00; 480-675 LBS. 41.00-51.00.

FEEDER BULLS: 490-715 LBS. 60.00-68.00.

FARM CALVES: 110-120 LBS. 100.00-145.00; 95-105 LBS. 100.00-135.00; 85-90 LBS. 100.00-135.00; 75-80 LBS. 90.00-135.00; WEAK AND ROUGH 60.00 AND DOWN.

HEIFER CALVES: 100-105 LBS 175.00-177.00.

GOATS: SMALL AND KIDS 18.00-31.00 HEAD.

Mercer Livestock

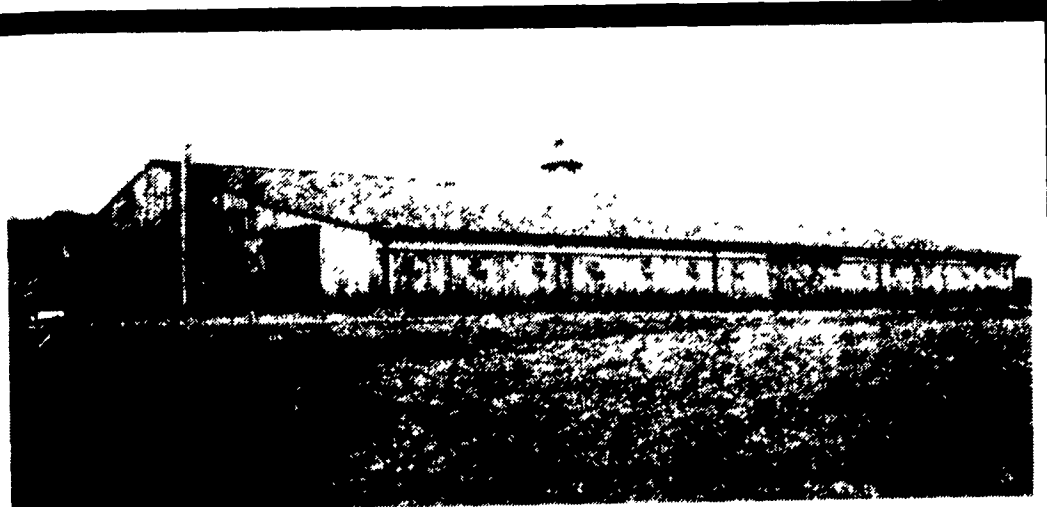
Mercer, Pa.

Tuesday, Sept. 15, 1992

Report Supplied By Auction

CATTLE: 187. HIGH CHOICE & PRIME SLAUGHTER STEERS 72.75-75.50, 1 AT 76.00; CHOICE SLAUGHTER STEERS 71.00-74.00, SELECT STEERS 67.50-71.00, SELECT & CHOICE HOLSTEINS 59.50-67.00. SLAUGHTER HEIFERS CHOICE 69.00-73.00; SELECT 64.00-67.50.

COWS: BREAKING UTILITY & COMMERCIAL 43.50-47.00, CUTTER AND BONING UTILITY 45.25-51.00, 1 AT 54.50; CANNER AND LOW CUTTER 43.00-46.00, SHELLS LOW YIELD 27.50-36.50.



**Brecknock Builders
(215) 445-7897**

We Build With:

- A. Style: = Unique, To Your Spec's
- B. Pride: = Craftsmanship and quality
- C. Performance: = Completed in time and in budget

Call To Learn How Brecknock Can Help Make Your Next Building A Reality. Specializing In Postframe: All Steel Buildings

TRAILER-LOAD SALE!






Now Through Oct. 2, 1992

10 Year Warranty



Overall design keeps link pins tight. Impact swaging dovetail pins to prevent loosening even if they are worn smooth. (See diagram). Reversible chain lasts longer.

Example: Hook Link Chain Starting At \$9.00 Per Ft.

Replacement Chain Includes Paddles

- ★ Totally Forged, Hook Link
- ★ 5/16" Flat Link
- ★ 3/4" Paddles
- ★ 1/2" Paddles
- ★ Heaviest Hook Link Made
- ★ Pull Up To 750' Of Chain

All Discounts Apply To Orders Received By Oct. 2, 1992

Call For Excellent Prices!

ROVENDALE AG & BARN EQUIP.



Sales, Parts & Service

Watsonstown, PA 17777

717-538-9564 or 717-742-4226

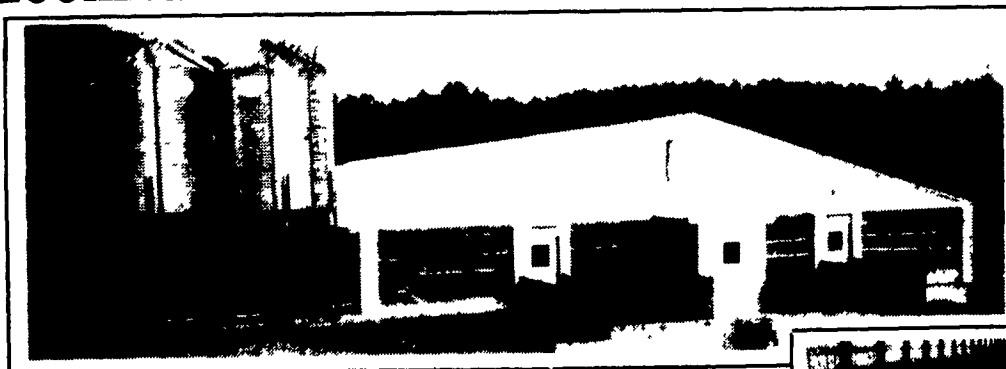
Exit 31, I-80 to I-180 Watsonstown Exit

Hours: Mon.-Fri. 8 to 5; Sat. 8 to 12

WE SHIP



LOOKING TO INCREASING CASH FLOW WITHOUT MARKET RISK?



Contracts Available For 1992 Fall Construction
1200, 2000, 3000 Head Finishing Floors
Call 717-866-7565

CHORE-TIME



BUILDING AND EQUIPMENT PROVIDED BY:

Swine & Poultry Systems Specialists

FARMER BOY AG.

410 E LINCOLN AVE MYERSTOWN PA 17067

24 Hour Service (HOURS: 8:00-5:00) (SA: 7:00-11:00) **717-866-7565**

Full Line Of Parts In Stock For Your Poultry & Hog Needs

WE SHIP UPS

