

76 Chevy step van #20, excellent condition, excellent produce truck. 717-529-2855.

'76 U Mack 300, 5 speed, engine break, good condition. \$6,000. (717)382-4881.

**YES!!
ENGLE FORD
DOES MAKE IT EASIER!!**

Over 100 New & Used Trucks, Vans & 4x4's
1987 F350 Crew Cab V8 AC AT Power Equipment
1990 Aerostar Cargo Van V6 AOD Sid Rear Glass
1988 Chevy S-10 Blazer V6 AOD AC Tahoe Pkg
1982 F350 Chassis Cab V8 4 Spd 13" WB
1989 F350 12' Stake Dump 351 V8 5 Spd Only 19,000 Miles
1990 F250 4x4 V8 AC Auto Trans Work Ready, 19,000 Mi
1987 Aerostar XL 7 Passenger V6 AOD AC Cruise & Tilt
1989 Ranger XLT AC 5 Spd 2.5L 30,000 Miles, Blue & Silver
1984 Chevy Conversion Van V8 AC AT 4 Captain Chairs & More
1988 F-Super Duty Contractor's Dump 300 V8 5 Spd
1990 Bronco XLT V8 AC AOD Power Equipment Group
1989 Ford Conversion Van V8 AT TR & RR AC & Heat

ENGLE FORD, INC.

Rt. 147 North
Millersburg, PA 17061
The Call's On Us 1-800-242-8075
1-717-692-4841

BOAT COVERS from \$39.00, call 1-800-874-2928 with boat size. Dealers invited.

TIRONIE'S TARPS

Fabric Covers for anything, Truck, Farm, Industry, also R.R. Ties available.

Mack R600 Single Axle, 237-5 Speed, Power Steering, Jake, Lots of Chrome, Excellent Condition
717/265-9014

TRAILER HITCHES & ACCESSORIES - Wholesale Outlet -

Heavy Duty Truck Hitches, Vans, 4x4's, Motor Homes
Class III Hitches Most **\$59.95**
Class IV Hitches Most **\$82.95**

Made in U.S.A.

PINTLE MOUNT
7" **\$22.00**
12" **\$36.00**

BALL MOUNTS
2" to 10" Drop **\$12.00 & Up**

Chrome Trailer Balls
1 7/8" **\$4.40**
2" **\$4.50**
2 5/16" **\$8.00**

BOX HITCH \$21.00

GOOSENECK HIDE-AWAY BOX \$89.95

Weight Distributing Hitches Complete **\$199**

UNIVERSAL PINTLE HITCH \$42.00
16,000 GVW

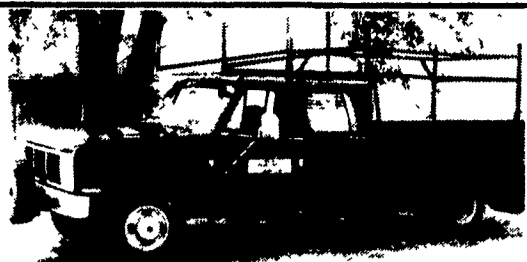
ELECTRONIC BRAKE CONTROL
From **\$55.00**

CALL OR FAX YOUR ORDER TODAY!

Thousands Of Parts In Stock - Buy Below Dealer Costs U.P.S. C.O.D. Shipments Only Call For Free "Full" Price List

GSI Services

215-536-6333 Fax 215-536-8437



1988 GMC Crew Cab with 6.2 diesel and chassis. \$7,500. Ph. 899-7617 from 8 to 10 p.m or 6 to 7 a.m.

FOR SALE. 45' trailers, excellent for storage or road use, \$1200 Phone 717-469-0887.

Ford LN800, 18' bed and hoist, good Omaha grain body, 361 motor, \$1,800 (410)836-2706

For Sale 1979 F700 Ford Truck 15 1/2' Eby Cattle Rack, Very Good Condition 717-724-2184.

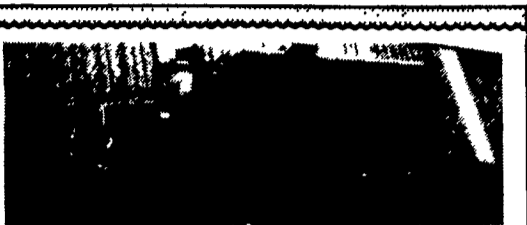
Heavy duty trailer, 6x12', steel bed, new vinyl top, 8800 GVW, commercial electric brakes, new tires and spare, dual axle, \$1,500 OBO. After 6pm, (814)623-5745

International 4070B w/318 engine, 15 speed, 100% road ready, \$3000 OBO 717-530-8998

New Featherlite aluminum stock trailer, gooseneck 7'x20', 6 year warranty, \$9793 80, 301/791-5343 (8-5 M-F).

New Featherlite Aluminum Trailer w/v-nose, 6 year warranty, gooseneck 6'8"x20', \$9508 50, 301/791-5343 (8-5 M-F).

Stock Trailer, 14ft, New 1992 Burkett \$1995, Located Near Gettysburg 410-857-4708

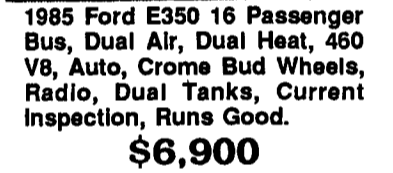


1976 Ford 9000
270 Cummins Turbo Diesel,
4200 Gal. Liquid Manure Tank,
Vacuum Pump, Side Spreading Fan
Used Daily
\$21,000
(717) 529-2803

USED TRUCKS



1980 Chevy 12 Pass. Van, Low Miles, Double Air And Heat, Privacy Glass, Cruise, Tilt, Captains Chairs, Class 3 Hitch, Very Good Condition.
\$5,500



1985 Ford E350 16 Passenger Bus, Dual Air, Dual Heat, 460 V8, Auto, Chrome Bud Wheels, Radio, Dual Tanks, Current Inspection, Runs Good.
\$6,900



1985 Honda Accord LX, 5 Speed, PS, PB, Air, AM-FM Cassette, Current Inspection, Charcoal Grey, 93K Miles, Dependable, Choose From 2
Each **\$3,999**



1979 General 3 Axle Tag-A-Long Trailer, 24,000 GVW, 15' Flat Ramps, 3' Beavertail.
\$1,999



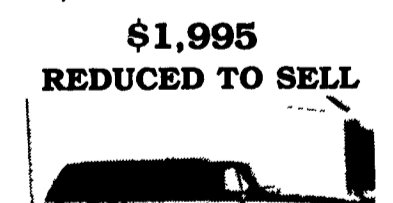
1979 Ford F600 Bucket Truck, 31' Reach, V8 Gas, New Paint, Works Good, Choice Of 2.
\$6,900



1992 New 5 Ton Tag-A-Long, All Wheel Brakes, Adjustable Hitch, Adjustable Ramps, 16' Bed, Or 18' Bed Available.
\$1,995



90 GMC Topkick, 2,000 Mi., 16' Flatbed w/Dump, Like New Cond.
\$19,999



1988 Chev. Suburban-Silverado- 4x4; 350 EFI, Privacy Glass- Running Boards, Auto, CC, Pdl., RWD, Dual Air, Tilt, AM-FM Cassette, PW, 2 Captains Chairs, 8 Passenger Seating, 2 Tone Blue, 76-K Miles, New Inspection.
\$10,500
A GREAT BUY



King Gooseneck Trailer, BUD Wheels, 30,000 GVW, 24' Flat, 4 1/2' Beavertail Ramps, 8' Wide.
\$3,999

HOURS:
MON-FRI 7:30 To 5:00
SAT 7:30 To NOON

HOSTETTLERS YOU DESIGN IT SALE!

Unit 1
1974 Ford F700, V8 Gas, 5 & 2 Speed Trans., PS, Air Brakes, 26000# GVW, Cab & Chassis

\$2,995

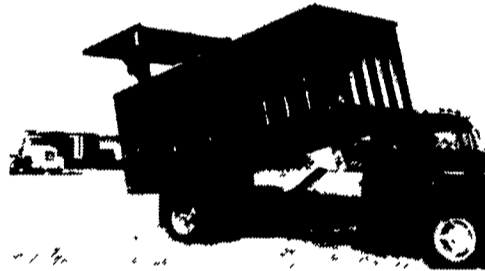
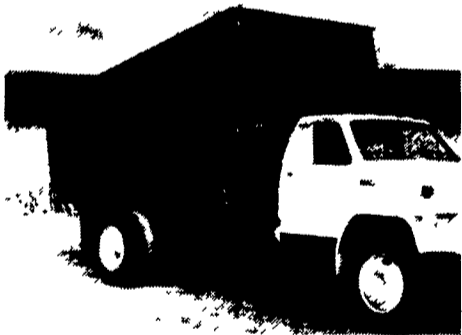
Option 1 - 18' Scott Silage Body With High Lift Tailgate & Hoist, Installed with Above Truck

\$11,495

Option 2 - 18' Knapheide Grain Body With 40" Steel Grain Sides and Hoist with Above Truck

\$8,500

Option 3 - Whatever you Want On The Truck!



Unit 2
1975 IHC Model 1850, Diesel Engine, PS, 5 & 2 Speed, Like New Radials, 26000# GVW Air Brakes, Only 48,000 Miles
13' Knapheide Grain Body with 52" Steel Grain Sides and Hoist with Above Truck

Package Unit **\$8,950**

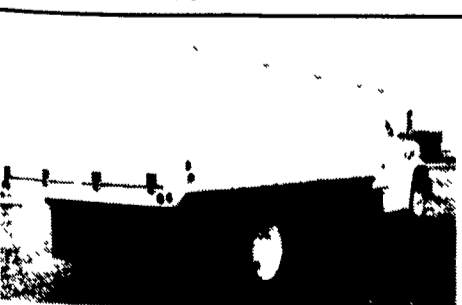
Unit 3
1981 IHC V8 Gas, PS, 4&2 Speed, 20,000 GVW

\$3,995

Option 1- 14' Knapheide Grain Body with 40" Steel Grain Sides and Hoist, with Above Truck

\$8,995

Option 2 - Whatever You Want To Put On The Truck.



1987 GMC, V8, Gas, 5 Speed, PS, 79000 Miles, 23160# GVW, New Radials On Front, New Recaps On Rear. 16' Aluminum Grain Body, 48" Sides, Swing Open Rear Gate, and Hoist

Package Price **\$16,945**

Above Trucks Are In Stock and Available For Your Personal Inspection. If You Already Have A Truck Let Us Install The Body!

* Pictures Are Not Of Actual Trucks Being Advertised



Hostetler Truck Bodies & Trailers

Rt. 322 Milroy, PA 17063
(717) 667-3921

WENGERS INC.

251 SOUTH RACE STREET, MYERSTOWN, PA. 17067
PH: 717-866-2130 FAX 717-866-4300