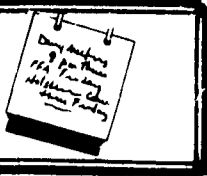


Farm Calendar



(Continued from Page A10)

Malvern, 9 a.m.-4 p.m.
World Dairy Exposition, Dane County Exposition Center, Madison, Wis., thru October 4.
Northeastern Poultry Show, Lancaster Host Resort, thru Oct. 1.
New Holland Fair, thru October 1.
Grange Fair Livestock and Dairy Exhibitors, Willowbank Building, Bellefont, 8 p.m.

Thursday, October 1

KILE, Farm Show Complex, Harrisburg, thru October 5.
Livestock Direct Marketing Beef, Sheep, Swine Appraisal, Hackettstown Auction Market Arena, lambs 7 p.m., swine 8 p.m.
Pennsylvania Council of Cooperatives, Nittany Lion Inn, State College, through Oct. 2.
Beef Meeting, Country Table, Mt. Joy, 6:30 p.m.



Reserve champion went to Kurt Martin, right, for his 252-pound Hampshire cross gilt. At left is Ken Winebark, show judge.



Craig Metzler Charles Garrett Solanco

(Continued from Page A1)
Jody, from Solanco FFA, said it was "feeding and working" with the gilt that brought home the championship.

Reserve champion went to Kurt Martin, also from the heavyweight class, for his 252-pound Hampshire cross gilt. Kurt, 13, Locust Grove, is in his second year of 4-H and is the son of Bob and Marilyn Martin.

Senior showmanship honors went to Craig Metzler, 17, Pequea for his York cross. Craig is the son of Daniel and Ethel Metzler. Junior showmanship honors went to Charles Garrett, 15, a member of the Penn Manor FFA from Pequea, with his Hampshire cross. Charles is the son of John and Charlene Garrett.

In all, there were a total of 119 hogs and 40 exhibitors. Following is a list of show placings.

SOLANCO FAIR SWINE SHOW RESULTS

MARKET HOGS

Lightweight Class 1 (200-205 lbs) 1 Michael O'Handly. 2 Darrn Hess 3 John Paine Class 2 (206-210 lbs.) 1 Rachel Kreider. 2. Michael O'Handly. 3 Clair Linkey Class 3 (211-215 lbs) 1 Hope Long 2 Brad Byers 3. Justine Hill Champion Hope Long Reserve Rachel Kreider
Middle Weight Class 4 (216-220 lbs) 1 Aron Hoyt 2 Craig Metzler 3 Stephanie Garrett Class 5 (221-225 lbs) 1 Blake Huber 2 Natasha Hill 3 Melissa Holloway Class 6 (226-230 lbs) 1 Kurt Long 2 Melissa Holloway 3 Chris Weik Champion Aron Hoyt Reserve Blake Huber
Light Heavyweight Class 7 (231-235 lbs) 1 Craig Metzler 2 Kurt Long 3 Jeremy Rowland Class 8 (236-240 lbs) 1 Scott Wagner 2 Darrn Hess 3 Clint Huber Class 9 (241-245 lbs) 1 Matt Weik 2 Clint Huber 3 Hope Long Champion Scott Wagner Reserve Craig Metzler
Heavyweight Class 10 (246-250 lbs) 1 Jill Harnish 2 Robert Garrett 3 Blake Huber Class 11 (251-255 lbs) 1 Jody England 2 Kurt Martin 3 Calvin Landis Class 12 (256-260 lbs) 1 Matt Weik 2 Keith Martin 3 Blake Huber Champion Jody England Reserve Kurt Martin

SUPREME CHAMPION

Jody England

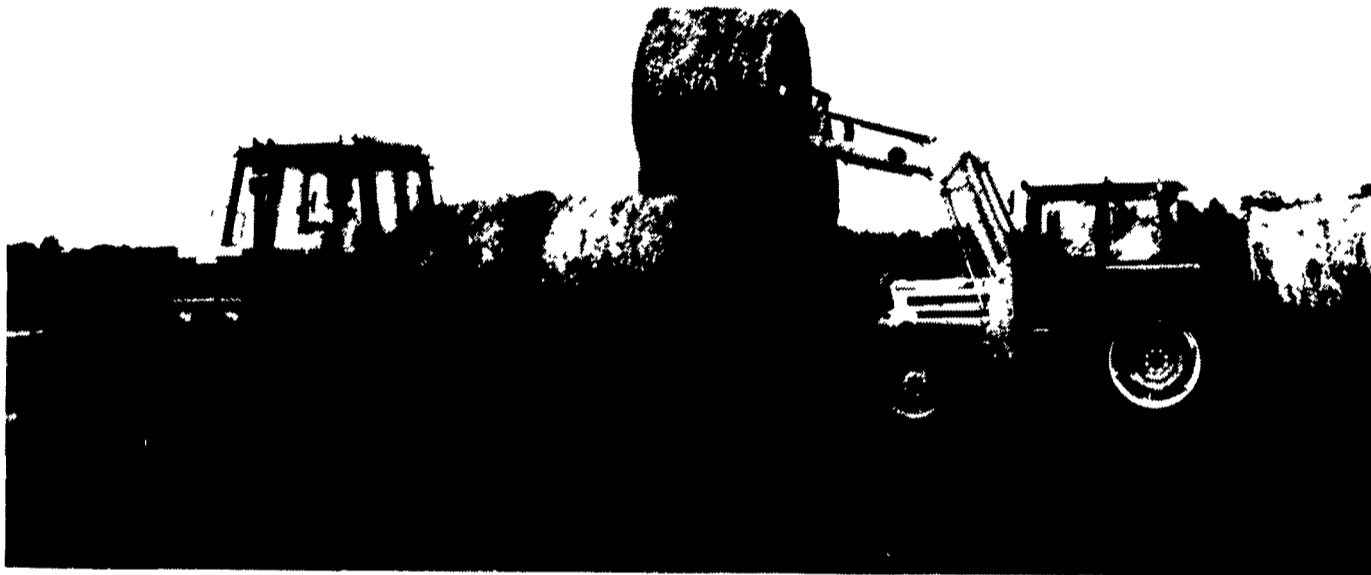
RESERVE

Kurt Martin

SHOWMANSHIP

Seniors (16 and older) 1 Craig Metzler 2 Scott Wagner 3 Ryan Rohrer Champion Craig Metzler Reserve Scott Wagner Juniors (15 and under) 1 Charles Garrett 2 Vince Metzler 3 Calvin Landis Champion Charles Garrett Reserve Vince Metzler

KUBOTA OFFERS HIGH PERFORMANCE



No matter what the load is, a Kubota L or M series tractor can handle the job. Big or small, you'll get high performance, low maintenance and a low fuel bill.

Our L-Series tractors, ranging from 20 to 49 PTO HP, are available with a variety of options and several transmission choices. Kubota M-Series farm tractors are built for any kind of work that crops up. With 44-91 PTO HP, 2 or 4WD and a choice of shuttle-shift transmissions.

Kubota's L & M series tractors start fast. Superb handling and lugging power. Quiet, comfortable operation over the long haul. A dozen useful implements allow extra work.

See your Kubota Dealer and find out more about these high performers.



Kubota Tractor Corporation markets a full line of tractors through a nationwide network of over 1,000 dealers



See Your Local Kubota Dealer

PENNSYLVANIA

Alburtis
CANNS-BILCO
215-820-0222

Allenwood
ALLENWOOD
RENTAL
& SUPPLY
717-538-2595

Avondale
THOMAS POWER
EQUIP., INC.
215-268-2181

Bloomsburg
TRACTOR
PARTS CO.
717-784-0250

Chambersburg
STOFFER
BROS., INC.
717-283-8424

Chester Co.
HEITZMAN
EQUIP., INC.
Rte. 100 - Glenmoore
215-458-8525

Cochranville
STOLTZFUS FARM
SERVICE, INC.
215-593-2407

Elizabethtown
MESSICK FARM
EQUIP. INC.
717-367-1319

Jersey Shore
THOMAS
L. DUNLAP
717-398-1391

Honesdale
MARSHALL
MACHINERY, INC.
717-729-7117

Lebanon
KELLER BROS.
TRACTOR CO.
717-949-2000

Lancaster
KELLER BROS.
TRACTOR CO.
717-569-2500

Millinburg
MIFFLINBURG
FARM
SUPPLY, INC.
717-966-3114

Reading
NICARRY
EQUIPMENT CO.
215-926-2441

Stroudsburg
SEBRING'S
POWER HOUSE
717-421-8980

York
YORK TRACTOR,
INC.
717-764-1094

MARYLAND
Hagerstown
ARNETT'S
GARAGE
301-733-0515

Chestertown
W.N. COOPER
& SON, INC.
410-778-3464

Rising Sun
AG IND. EQUIP.
CO. INC.
301-658-5568

NEW JERSEY
Flemington & Clinton
PONIATOWSKI
BROS.
EQUIP. CO. INC.
908-735-2149

Hainesport
MATERIAL
HANDLING
SYSTEMS
609-267-6100

Shiloh
ROBERT G.
HAMPTON
609-451-9520

NEW! Speedglas®

Welding Helmet
"A Must For Every Shop"

- DARKENS AUTOMATICALLY
- See Clearly Before Welding Begins
- Liquid Crystal and Polarizing Lenses
- Improves Welding Time Dramatically!
- One Year Warranty
- MANUAL MODE Allows use with tig welder
- Shade 12 Lens

4 MODELS TO CHOOSE FROM:

✓ APC Regular Helmet ✓ APC Regular Helmet w/Side Shields
✓ XL Regular Unit ✓ XL Regular Unit w/Side Shields

— HIGH PRESSURE WASHERS
— HIGH-TENSILE FENCING
— WELDING SUPPLIES
— KENDALL OILS & LUBRICANTS

Kendall

Drydene
OILS &
LUBRICANTS

D.S. MACHINE SHOP

238B Old Leacock Rd.,
Gordonville, PA 17529

717-768-3853 — UPS Service —