

Public Auction Register

Closing Date Monday 5:00 P.M.
of each week's publication

PUBLIC AUCTION REAL ESTATE 125+ ACRE FARM SAT., SEPT. 26, 1992 @ 11:00 A.M.

310 Prospect Road, Elizabethtown
From E'town Square take E. High St.,
continue approx. 3 miles on Elizabethtown Rd. to Prospect Rd.; turn left and continue to second farm on left.

IMPROVEMENTS INCLUDE 2½ sty. frame dwelling containing 10 rooms (including 2 kitchens, 2 baths and 2 stairways) and attached laundry; full concrete basement and attic; baseboard hot water heat; insulation blown in exterior walls & attic floor; formerly used as 2-unit dwelling.

Lg. bank barn w/3 drive floors & 2 side mows; attached block daily barn, 50 tie stalls w/barn cleaner, loose housing area; milk house; 625 gal. Jamesway bulk tank, 2" SS Surge pipeline, 5 milking units; 16'x60' concrete stave silo w/unloader; corn barn; tobacco barn w/dampening cellar; 1 sty. stone & frame bldg. 16'x94', 3 car garage, farm pond.

Approx. 90 acres tillable, balance pasture & woodland. Farm is in high state of cultivation.

TERMS: 10% day of sale, balance at time of settlement on or before March 1, 1993. Conditions of sale to be given day of sale by attorney. For appointment to inspect property call (717) 367-4388 or (717) 367-3917.

Sale for
AMOS & MARIAN ZUCK
Atty: Shirk, Reist, Wagenseller
Auctrs: Long & Long (AU-555-L)
(717) 367-3917

SAT- OCT. 3 - 9AM
Advance Notice Annual
Equip. Sale, Farm equip.,
contractors equip, lawn &
garden, mowers, cars,
trucks, hay & straw, animals,
tools, small items
Dwight D. Miller, auct.

SAT. OCT. 3 - 9AM, Surplus
Equipment, School
Desks, Office Equipment,
Gym Equipment Located

At The Vocational Building
In Cornwall Next To The
Bus Garage. Auction
Conducted By Nelson L. Eber-
sole, Auct.

SAT OCT 3 - 9AM, Antiques
& Household
Located At Camp Mount
Luther West Of Mifflinburg,
Pa., Off Route 45 Turn
Opposite Direction From
Christ United Lutheran
Church And Proceed Three

Miles To Camp Follow
Signs Wayne Shively,
Auct

SAT OCT 3 - 9:30AM,
Farm Machinery, Tools &
Supplies Located At Jim
Trout's Farm, 10104 Dublin
Rd., Walkersville, Md
Trout Aucts, Inc

SAT OCT 3 - 10AM, Valuable
Real Estate, 1¼
Acres M/L. Antiques,
Household Goods, Fine
Furniture, Quilt, Fine China
& Glassware Located 83
Eastbrook Road, Ronks,
East Lampeter Twp., Pa
Dir 5 Miles East Of Lancaster
On Rt 30, Turn Left
On Rt 896 Sale Approx
1/2 Mile On Right Sale For,
Mary B Siegrist, Miller &

Lancaster Farming, Saturday, September 12, 1992-B39

Siegrist, Aucts.
SAT OCT 3 - 11AM, 38 75
Acre farmette. At 235 Pear-
town Road, Reinholds, Pa
By Vernon J & Allegra K
Leininger. Paul E Martin,
auct

SAT. OCT. 3 - 11AM, 87
Acre farm Located at 1667
Cider Press Road, Rapho
Township, Lanc Co., Pa
For Miriam F. Shearer.
E M. Murry Associates,
aucts

SAT OCT 3 - 11AM, 10
Building Lots. Located
Bernville Rt 183 N, R On
SR 4011 To R On Irish
Creek Rd & Sites On Left
Kenneth A Geyer, Auct

SAT OCT 3 - 1PM, Real

Estate Auction, Located
Village Of Elk Grove, Pa
(Sullivan-Columbia Co.
Line), 10 Miles North Of
Benton Follow Signs 4
Miles Off Rt 118 At Grass-
mere Park Owners, Mr &
Mrs. Walter Minto George
S Kapp Jr., CAI, & Gele L
Derr, Aucts

SAT OCT. 3 - 1PM, Valuable
Real Estate Located
At 456 Weaver Road, 4
Miles South Of Strasburg,
4 Miles Northeast Of Quarry-
ville, One Mile West Of May
Post Office Roads, At Corner
Of Weaver And Miller
Roads, Strasburg Twp.,
Lanc Co., Pa Owners,
John F Esh Diffenbach
Auct



ALDERFER AUCTION COMPANY

SEPTEMBER CATALOGUED AUCTION

THURSDAY, SEPTEMBER 24, 9:00 AM

Inspection: Wednesday evening, September 23, 4:00 - 8:00 PM

ART • ANTIQUES • WORKS ON PAPER

Works by Pennsylvania artists including: E. W. Redfield, W. E. Schofield, A. P. Martino, E. Martino, G. Martino, Ben Badura, Faye Swengel, Fern I. Coppedge (6), G. A. Newman, H. B. Snell, S. G. Phillips, G. W. Sotter, W. F. Taylor, W. E. Baum, H. Leith-Ross, John Folinsbee, Mel Stark, Joseph Meierhans, an early unsigned painting of Columbus, and a painting attributed to Eakins. Other oil paintings by Eric Sloane, W. M. Post, Alexander Harrison, Lewis Blanquet, Elliot Torrey, Clifton Wheeler, Aaron Bohrod, Carl W. Peters, John F. Carlson, Karl Anderson, Adolphe Borie, L. W. Prentice and George Schwacha. Works on paper include a Toulouse-Lautrec "May Belfort" poster, Whistler lithographs, a Durer etching, about 50 WWI and other posters, watercolors and etchings by W. J. Wendt, W. L. Stevens, M. Blackburn, H. Pullinger, C. Burnside, Ranuph Bye, Benton Spruance, Pietro Gabrini and others. Tiffany Studios, Tiffany and Steuben Aurrene Lamps and glass. Period furnishings include the Nase Family C. 1790 Decorated Kas, three tall case clocks, tall and low chests of drawers, Pembroke tables, fine Victorian sofa and chair, and other fine items. Oriental rugs include several room size Sarouks, Henz and Kermans and many smaller rugs. Ten fraktur lots. Twelve nice quilts and coverlets. Native American items. Immediately following the catalogued auction, we will sell from the library of Kirke Bryan, Esq., Norristown, Pa. Collector, Historian and Bibliophile. Many signed first editions and other important books. Request flyer NO RESERVE / NO BUYER'S PREMIUM.

CATALOGUES \$18.00 BY FIRST CLASS MAIL

Terms: Cash / acceptable check / VISA - MC

501 FAIRGROUNDS ROAD, HATFIELD, PA 19440
Phone: (215) 368-5477 - PA NO. AU 001171

SAMUEL KELELR ESTATE PUBLIC AUCTION THURS. EVE., OCT. 1, 5:30 P.M. APPROXIMATELY 17 ACRES

On the premises along Rt. 897 approximately 1 mile East of
Schaefferstown, Heidelberg Twp., Lebanon County.

This Auction Consists of A Tract of Farm Land Mostly Sand Soil, That Has A Frontage Of Approximately 1000 Feet Along Route 897 And Also Has Frontage Along Weidman Road Approximately 875 Feet. There is A Well On The Premises, But Is Being Sold As Farm Land (Buildings Are Not Usuable). We Make No Representation Concerning Development Potential. For Further Information & Inspection Call Auctioneer At 949-3126 For Appointment.

Ruth E. Jones (Administrator)

Sale Time 5:30 P.M.
Attorney John D. Enck
Auctioneer: G. Harvey Welk AU-988-L

PUBLIC AUCTION

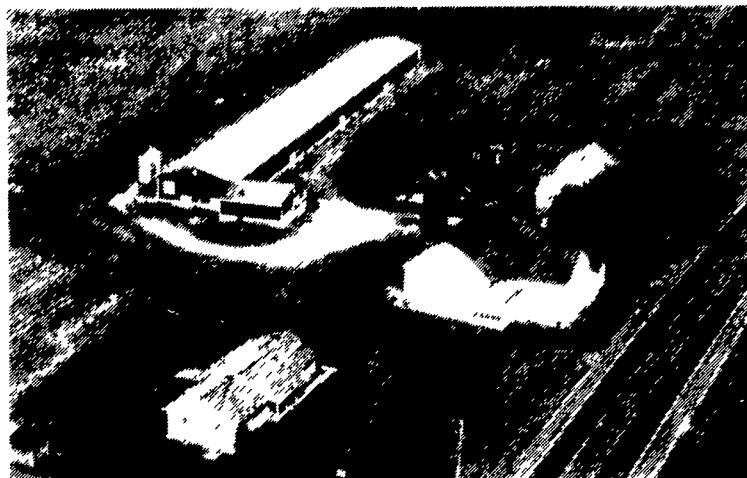
CHESTER COUNTY REAL ESTATE
VALUABLE 69 ACRE FARM M/L

(Known as Landis Cackleberry Farm)

N.H. SKID LOADER - PERSONAL PROPERTY -
ANTIQUES

TUESDAY, SEPTEMBER 29, 1992

10 A.M.



LOCATION: Along Rt. 30 West Sadsbury Twp. R.D. #1, Parkesburg, PA. From Lancaster take Rt. 30 East approx. 4 miles East of Gap and Rt. 41 intersection OR From Coatesville/Exton take Rt. 30 West approx. 7 miles to farm on right approx. 1 mile West of Rt. 10.

Real Estate consists of productive 69 Acre farm w/two dwellings Located along Rt. 30 and N. Black Horse Road w/approx. 2800' road frontage. Approx. 60 Acres tillable. House #1 main farm house is 2½ story frame w/siding, 4 bdrm. dwelling w/2 full baths, country eat-in kitchen w/cherry raised panel cabinets and appliances, formal dining rm., living and family rms., and first floor office and laundry, full attic and basement storage. Oil HW baseboard heat and new electrical service. House #2 is a 4 yr. old custom built, 3 bdrm., 1½ bath, Ranch style dwelling w/no maintenance siding exterior. Eat-in kitchen w/oak raised panel cabinets, formal dining rm., living rm., and first floor laundry. Oil HA heat w/central air. 2 car attached garage w/auto openers. Barn and Out Buildings include large frame Bank Barn, oversized 3 car garage w/auto openers, and Hi-Rise Poultry house 44'x408' w/Layer set up for 45,600 capacity and attached 35'x40' egg packing and cooling room. NOTE: Farm Zoned Commercial and Residential. Farm and Houses open for inspection by Appointment or Open House dates - Sat., September 12, 19, 26 from 1 to 4 P.M. Terms 10% Auction day, Balance 12/31/92. For details, pictured brochure, and land plotting, Call Auctioneers 717-733-1006. Real estate offered 2 PM.

Complete Listing Later Issue

Terms By:

MILTON B. &
THELMA K. LANDIS

Auction Conducted By:
Randal V. Kline, Lloyd Kreider
Roy E. Good, Jr., Auctioneers
#AU499L #717-733-1006

#717-442-8750
Kenneth Howard Esquire

KREIDER & KLINE AUCTIONEERS

PUBLIC AUCTION

FRIDAY, SEPTEMBER 25th, 1992 — 9:30 A.M.

THE UNDERSIGNED WILL HOLD PUBLIC SALE LOCATED AT HIS FARM IN HUNTINGDON COUNTY - JUST OFF RT. 453 - 6 MILES SOUTH OF TYRONE, PA. OR 2.5 MILES NORTH OF WATER STREET INTERSECTION. THE FOLLOWING FARM MACHINERY WILL SELL:

CASE 730 Diesel Tractor - New 16.9.34 Tires - New Paint - 3 Pt. Hitch - Fenders - 4 Remote Outlets, INTERNATIONAL 656 Diesel Tractor - Fast Hitch - Less Than 300 Hrs. on New Motor, Allis Chalmers 190XT Diesel Tractor - 540 Shaft - Cab - New Tires, Int. 3-14 Fast Hitch Plow, Int. Automatic 450 3-16 Reset Plow, 3 Pt. 11 Tooth Chisel Plow, 1 Tandem Axle Badger Forage Wagons w/Roofs, Int. 12 ft. Transport Disk, Gehl 99 Hopper Blower - 1 yr. old, New Idea 2 Row Narrow Pull Type Corn Picker w/12 Roll Bed, New Holland 315 Hay Baled w/Thrower, McCurdy Gravity Wagon, 2 - John Deere 1065 Hi-Throw Bale Wagons, New Holland 56 Hay Rake, New Holland 790 Manure Spreader - Tandem Axle, New Holland 717 Supper Chopper w/2 Row Corn Head & Grass Head, New Holland 1469 Self Propelled Haybine w/ New Rolls & Recently Rebuilt 4 Cylinder Gas Engine, Int. 990 Pull Type Haybine, Farmco 20 Ft. Feeder Wagons, 2 - 30 Ft. New Idea Elevators, New Holland 30 Ft. Elevator, New Holland 520 Manure Spreader - Double Beater & Splash Pan - 3 Yrs. Old, Portable Grain Elevator, 3 Pt. Fertilizer Spreader - Like New, Homemade 16 Ft. Lowboy Trailer - No Title, Model 6872 6 Ton Hi-Throw Bale Wagon - 2 Yrs. Old, Bale Spear 3 Pt. Int. 8 Ft. Snow Blower, 10 Ft. Double Roll Cultipacker, Bush Hog 3 Pt. Post-hole Digger, Keystone Heavy Duty Air Compressor w/3 H.P. Motor, 1991 MODEL 743-B BOBCAT DIESEL SKID STEER LOADER — ONLY 221 HRS. HAS DIRT BUCKET & FORKS

DAIRY EQUIPMENT - APPROX. 1 YR. OLD & RELATED ITEMS

6 Ton Metal Feed Binw/12 Ft. Elec. Auger, 3 Fiberglass Calf Hutches, 80 Ft. of Concrete J. Type Feed Bunks, Set of 3 Pt. Stocks w/Head Gate, Port. Metal Corral w/Head Gate, Approx. 12 Assorted Sizes of Steel Gates, 2 Rolls of Smooth Wire, 4 Aluminum Ladders, Approx. 10 Bags of Pioneer Seed Corn, 3 - 36 Inch Barn Fans, Surge 1600 Gallon Bulk Tank, 168 Ft. Surge Stainless Steel 2" Pipe Line, 160 Ft. 3" Plastic Vacuum Line, 6 - Surge Milking Claws, 2 - 5 H.P. Compressors, 1 - 5 H.P. Vacuum Pump, 1 - 80 Gallon Hot Water Exchanger, 1 - 80 Gallon Hot Water Heater, Misc. NEW Milkhouse Equipment.

RISSLER 80 FT. WOOD TAPERBOARD FEEDER - CHUTE & MOTOR

4 Metal Water Troughs, New Frost Free Insulated Waterer, 4 Silage Carts, Clay Electric Feed Cart, New (2) Round Bale Feeders, 7 Wooden Sheep Feeders - 8 Ft. Long Each, 6 Sections of Scaffolding.

HAY - Approx. 1500 Bale Alfalfa Mixed Hay, Approx. 100 Railroad Ties

TRUCKS

1988 Chevrolet 1 Ton Dual Wheel w/9Ft. Chore Boy Dump Bed - 43,000 Mile - V-8 Engine - 4 Speed, 1971 R. Model Mack Tandem Truck w/3200 Gallon Fuel Body, 1973 Ford F-600 V-8 Engine w/12 Ft. Van Body w/Hydraulic Tailgate, 1979 GMC 4 x 4 Short Bed Pickup Truck - V-8 Engine, 1983 GMC 1 Ton Truck V-8 Engine w/8 Ft. Van Body w/Hydraulic Tailgate.

Gas 4 Cylinder Portable Welder ————— Model 200 Honda 3 Wheeler

FEW MISC. ITEMS — DON'T BE LATE!!!

AUCTIONEER'S NOTE: MILK EQUIPMENT & SOME RELATED ITEMS HAVE BEEN IN USE FOR ONLY 1 YEAR.

TERMS: CASH OR CHECK — DAY OF SALE

AMISH LUNCH STAND

SALE BY: FRED MARTIN

AUCTIONEER: RONALD J. GILLIGAN, PA. LICENSED & BONDED #AU#339-L

Owner or Auctioneer not responsible in case of accident.