

Leinbach's Shippensburg Produce Auction

(717)532-5511
 Shippensburg, PA
 Average Prices Of #1 Produce
 Sept. 3-9
 Open 10 a.m. Mon.-Sat.
 Report Supplied by Auction
 APPLES: 2.00-4.50 ¼ BU.
 BEANS (GREEN): 5.00-10.00 ¼ BU.,
 YELLOW 4.00-7.00 ¼ BU.
 LIMA BEANS: 10.00-12.00 ¼ BU.
 BROCCOLI: 5.00-7.50 1 1/9 BU.
 CANTALOPES: SM. TO LGE. 10-1.25
 EACH.
 CABBAGE: 1.00-4.00 50 LBS.
 CAULIFLOWER: .50-70 HEAD.
 CORN: WHITE 1.00-2.00 AND YEL-
 LOW .75-1.75 DOZ.
 CUCUMBERS: 3.00-5.00 ¼ BU.
 EGGPLANTS: 3.00-5.00 1 1/9 BU.
 MUMS: 1.35-2.35 EACH.
 NECTARINES: 4.00-6.00 ¼ BU.
 PATTYPANS: 2.00-4.00 ¼ BU.
 PEPPERS (GREEN): MEDIUM
 4.00-6.00 1 1/9 BU., LARGE 5.00-8.00 1
 1/9 BU.; LARGE RED AND YELLOW
 8.00-16.00 1 1/9 BU., MEDIUM
 8.00-12.00 1 1/9 BU.; HOT 3.50-5.00 ¼
 BU.
 PEARS: 3.00-5.00 ¼ BU.
 PEACHES: WHITE AND YELLOW
 4.00-6.00 ¼ BU.
 PICKLES: LARGE TO SMALL
 2.50-8.00 ¼ BU.
 POTATOES: #1 50 LBS. 4.00-5.00,
 2.50-5.00 ¼ BU.
 PLUMS: 3.00-6.00 ¼ BU.
 PUMPKINS: NECK .65-1.25 EACH,
 FACE .25-1.25 EACH, BABY PAMS
 25-65.
 ORNAMENTALS: INDIAN CORN:
 1.00-1.50 BUNCHED; FINGERS .65-.95
 BUNCH; GOURDS 4.00-5.00 ¼ BU.;
 JACK-BE-LITTLES 4.00-5.00 ¼ BU.
 SQUASH (YELLOW): 4.00-7.00 ¼ BU.
 TOMATOES: MEDIUM 3.00-5.00 25
 LBS., LARGE 4.00-7.00 25 LBS.; ITA-
 LIAN 3.00-6.00 25 LBS.
 WATERMELONS: MED. TO LGE.
 .25-1.75 EACH; YELLOW DOLLS
 .35-1.25 EACH; SEEDLESS .50-1.50
 EACH.
 HONEYDEWS: .25-.65 EACH.
 ZUCCHINI: YELLOW AND GREEN
 3.00-7.00 ¼ BU.
 SALE DAYS ARE MONDAY-
 SATURDAY, 10 A.M.

Southern Maryland Regional Farmers' Market

P.O. Box 144, Cheltenham, Md. 20623
 Aug. 31-Sept. 4, 1992
 GREEN BEANS: 3.50-14.00 BU.
 LIMA BEANS: 20.00-25.00 BU.
 CUCUMBERS: MED. 5.00-12.50 ¼
 BU.; LGE. 8.00-8.50 ¼ BU.
 EGGPLANT: 1.50-6.50 1 1/9 BU.
 ONIONS: SPRING 15.00.
 OKRA: 5.50-19.00 ¼ BU.
 PEAS: PURPLE HULL 20.00 BU.
 PEPPERS: GREEN MED. 2.50-6.00 1
 1/9 BU., LGE. 3.00-11.00, EX. LGE. 3.50 1
 1/9 BU.; RED 3.50-12.50 1 1/9 BU.; HOT
 CAYENNE 5.00-5.50 ¼ BU.; SWEET
 BANANA 3.00-5.50 ¼ BU.; HOT HUNG.
 WAX .50-4.50 ¼ BU.; JALAPENO
 5.00-8.00 ¼ BU.
 POTATOES: RED 6.50-10.00 BU.;
 WHITE 2.00-4.50 ¼ BU., 5.00-11.50 BU.
 50 LBS.
 PUMPKINS: BULK MIXED .50;
 ORNAMENTAL 8.00 ¼ BU.; OTHER
 6.00-12.00.
 SQUASH: PATTY PAN 2.25-7.50 ¼
 BU.; YELLOW STRAIGHTNECK
 5.50-12.50 ¼ BU.; GREEN ZUCCHINI
 4.00-12.00 ¼ BU.; ACORN 3.00-5.00 1
 1/9 BU.; BUTTERNUT 3.00-4.50 1 1/9
 BU.
 CORN: .60-2.20 DOZ.
 SWEET POTATOES: #1 9.00-12.00
 BU.; #2 5.00-7.50 BU..
 TOMATOES: SM. 1.00-8.50 25 LBS.,
 MED. 1.00-9.00, LGE. 1.00-10.50, EX.
 LGE. 3.00-10.50; CHERRY .25-7.50 12
 PINT FLAT.
 CANTALOE: SM. .60, MED. .40-1.35,
 LGE. .70-1.75.
 WATERMELON: CRIMSON SM.
 .15-2.00, MED. .25-1.25, LGE. .60-2.00,
 MIXED SIZES .70 EACH; JUBILEE BLK
 SM. .65-1.05, MED. .60-1.25, LGE.
 .60-2.80; BLK. SM. 1.30, BLK. MED.
 .25-.80; OTHER BLK. MED. .25-.80.
 APPLES: MED. 5.50-9.00 ¼ BU., LGE.
 5.00-11.00 ¼ BU.
 BLACKBERRIES: 1.00-6.00 12 PINT
 FLAT.
 NECTARINES: SM. 8.50-9.00 ¼ BU.,
 MED. 6.50, LGE. 5.50-11.50 ¼ BU.
 PEACHES: MED. 5.00-7.00 ¼ BU.,
 LGE. 2.00-9.50 ¼ BU.
 PEARS: 5.50-9.00 ¼ BU.
 PLUMS: ITAL. PRUNE 5.50-8.00 ¼
 BU.
 HONEY: 1.50 LB.

MUMS: 6" POT 3.25, 8" POT 1.50-3.75
 EACH.
 FLOWERING KALE/CAB: 1.00-1.50
 6" POT.
 INDIAN CORN: .60-15.50 15 BUNCH,
 15.00 20 BUNCH, PAPOOSE .75-15.00 30
 BUNCHES, OTHER 1.00-1.35.
 FRESH FLOWERS: 2.00-7.00 20
 STEMS.

Four States Livestock

Hagerstown, Md.
 Sept. 9, 1992
 Report supplied by Auction
 SLAUGHTER COWS: UTILITY
 47.50-51.00; HIGH DRESSING
 51.00-52.50; CANNERS 43.00-47.00;
 SHELLY 43.00 DOWN.
 BULLS: YG #1 1455 LBS. 67.00; YG#2
 1200-1800 LBS. 56.00-61.00.
 FED STEERS: 1 CHOICE 1300 LBS.
 73.00; LOW CHOICE 1050-1200 LBS.
 70.00-73.50; SELECT 64.00-69.00.
 FED HEIFERS: HOLSTEINS
 1000-1400 LBS. SELECT 54.00-57.50;
 STANDARD 52.00-54.00.
 VEAL CALVES: CHOICE, NONE;
 GOOD 200-300 LBS. 75.00-94.00;
 CULLS 85-115 LBS. 55.00-62.00; 50-80
 LBS. 45.00-55.00; WEAK/ROUGH 40.00
 DOWN.
 FARM CALVES: HOLSTEIN BULLS
 #1 90-120 LBS. 120.00-139.00; #2
 100.00-120.00; 75-90 LBS. 70.00-90.00;
 HOLSTEIN HEIFERS #1 95-120 LBS.
 150.00-182.00; 80-95 LBS. TO 132.00;
 BEEF X BULLS AND HEIFERS
 110.00-140.00, FEW 150.00-167.00.
 BUTCHER HOGS: NO TOPS
 OFFERED.
 SOWS: 300-500 LBS. 30.00-33.50.
 BOARS: 400-650 LBS. 28.00-29.25.
 STOCK CATTLE: STEERS 300-500
 LBS. 78.00-87.00; 500-700 LBS.
 72.00-78.00; 700-900 LBS. FEW
 OFFERED.
 HEIFERS: 300-500 LBS. 65.00-77.00;
 500-700 LBS. 66.00-71.00; LIMOUSINS
 79.00-87.00; 700-900 LBS. 64.00-72.50.
 BULLS: 200-400 LBS. 80.00-97.00;
 400-600 LB. HEREFORDS 57.00-67.00; 3
 PUREBRED ANGUS BULLS 800-950
 LBS. TO 700.00.
 DAIRY REPLACEMENTS: 1 LARGE
 SPRINGER AT 1260.00; MEDIUM
 675.00-950.00; SMALL 600.00-700.00;
 LARGE FRESH TO 910.00; MEDIUM
 600.00-725.00; 2 HOLSTEIN BULLS AT

750.00; HOLSTEIN HEIFERS 300-400
 LBS. 80.00-90.00; 400-600 LBS.
 70.00-81.00.
 SHEEP: 23.00-35.00.
 LAMBS: CHOICE 70-90 LBS.
 50.00-56.00; 40-70 LBS. 60.00-67.00.
 PIGS AND SHOATS: BY THE HEAD,
 20-30 LBS. 10.00-15.00; 30-45 LBS
 15.00-25.00; BY THE POUND, 100-150
 LBS. TO 36.00; 170 LBS. TO 43.00.
 NEXT WED., SEPT. 16, DAIRY CON-
 SIGNMENT SALE 7:30 P.M. PROM-
 ISED: 1 1/2 YR. OLD RED AND WHITE
 REG. HOLSTEIN BULL, SIRE BLACK-
 CREST KART-RED ET, DAM CHAR-
 DONNARY REPEAT DAIRY MARGE; 5
 BLACK ANGUS CATTLE OUT OF
 ARTIFICIAL BREEDING, 700-900 LBS
 3 HEIFERS, 2 STEERS.

55.00-67.00.
 FEEDER CATTLE: MARKET
 STEADY. BULLS & STEERS 400-900
 LBS. 64.00-82.00; HEIFERS 300-700
 LBS. 60.00-74.00.
 LAMBS: MARKET STEADY.
 CHOICE & PRIME 90-110 LBS.
 58.00-64.00; LIGHTER LAMBS
 49.00-78.00; EWES - HEAVY
 15.00-25.00; EWES - LIGHT 27.00-34.00.
 GOATS: MARKET STEADY. SMALL
 15.00-25.00; MEDIUM 30.00-50.00;
 LARGE 65.00-90.00.
 HOGS: MARKET 1.00 HIGHER.
 STEADY. 210-250 LBS. 43.00-45.50;
 255-300 LBS. 38.00-45.00; SOWS -
 HEAVY 32.00-36.00; SOWS - LIGHT
 28.00-32.00; BOARS ALL WEIGHTS
 28.00-31.00.

Aberdeen Sales Company, Inc.

Complete Auction &
 Appraisal Service
 Churchville, Md.
 Wednesday, Sept. 9, 1992
 SLAUGHTER STEERS: MARKET
 STEADY. CHOICE 2-4 1100-1400 LBS.
 72.50-75.50; SELECT & LOW CHOICE
 1000-1500 LBS. 66.00-72.00; HOL-
 STEERS HI CHOICE & PRIME
 1250-1400 LBS. 66.00-68.50; CHOICE
 1200-1500 LBS. 64.00-66.00; SELECT,
 ALL WEIGHTS 59.00-65.00.
 SLAUGHTER HEIFERS: MARKET
 STEADY. CHOICE & PRIME 950-1300
 LBS. 71.00-73.50; SELECT ALL
 WEIGHTS 900-1400 LBS. 64.00-68.00.
 COWS: MARKET 2.00 HIGHER BRK.
 UT. & COMM. 2-4 BULK 47.00-52.00; HI
 DRESSING 53.00-57.00, CUTTER &
 BON. UT. 46.00-49.00; HI DRESSING
 49.00-53.00; CANNER & CUTTERS
 42.00-47.00; LOW DRESSING
 42.00-DOWN.
 BULLS: MARKET STEADY ALL
 WEIGHTS 1100-1900 LBS. 57.00-68.00.
 VEAL CALVES: MARKET 3.00 LOW-
 ER. CHOICE AND PRIME 200-400 LBS.
 79.00-90.00; HI GOOD AND LOW
 CHICE ALL WEIGHTS 62.00-77.00.
 FARM CALVES: MARKET 3.00
 HIGHER. HOL. BULLS 100-125 LBS.
 117.00-142.00; HOL. BULLS 85-95 LBS.
 90.00-119.00; HOL. HEIFER CALVES
 100-120 LBS. 140.00-176.00; SMALL
 FRAME 70-105 LBS. 85.00-138.00;
 SLAUGHTER CALVES ALL WEIGHTS

Valley Stockyards

Athens, Pa.
 Monday, Aug. 31, 1992
 Report supplied by auction
 HOLSTEIN HEIFER CALVES
 140.00-180.00.
 VEAL CALVES MEDIUM
 65.00-85.00.
 VEALER BULL CALVES
 125.00-145.00.
 SLAUGHTER CALVES 55.00-80.00.
 GRASSERS & FEEDERS 50.00-90.00.
 LAMBS LIGHT TO 65.00, BULL
 LAMBS TO 50.00.
 SHEEP 12.00-28.00
 HOGS 200-250 LBS. 36.00-42.00.
 SOWS 22.00-30.00.
 BOARS 22.00-26.00.
 PIGS 15.00-26.00.
 HEIFERS 50.00-58.00
 STEERS TO 62.00.
 FEEDER STEERS 65.00-96.00.
 BULLS 50.00-62.00.
 GOOD COWS 47.00-50.00, TOP 52.50.
 COWS MEDIUM 46.00-48.00
 COWS POOR OR SMALL 40.00 AND
 DOWN.
 HORSES TO 460.00.
 PONIES TO 400.00.
 GOATS TO 70.00.
 CATTLE MARKET GOOD; CALF
 MARKET SOME HIGHER; LOTS OF
 GOOD REG. AND GRADES NEXT
 DAIRY SALE SEPT. 17, 7:30 P.M.

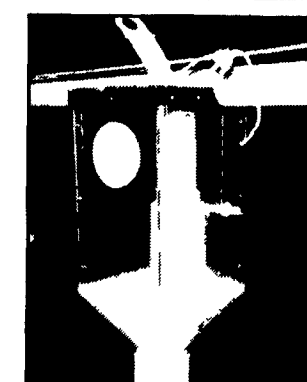
GSI BINS & FLEX-FLO AUGER SYSTEMS



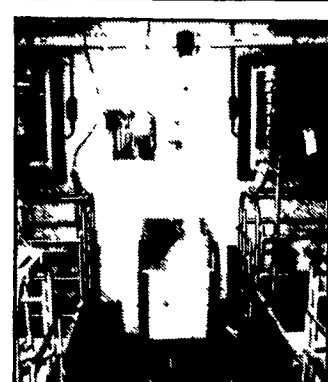
GSI GALVANIZED BULK BINS



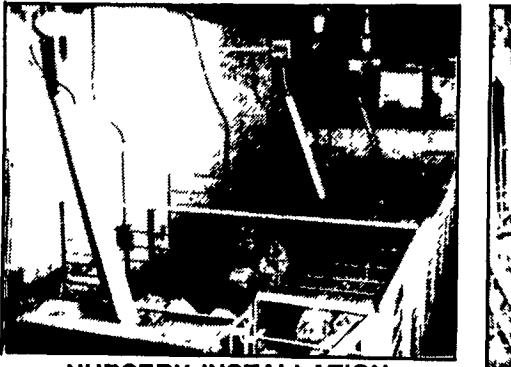
FINISHING BUILDING INSTALLATION W/HOG SLAT FEEDERS



CLEAR PLASTIC ADJUSTABLE SOW DROP



FARROWING ROOM INSTALLATION



NURSERY INSTALLATION W/HOG SLAT FEEDERS



GESTATION INSTALLATION



POULTRY INSTALLATION W/CUMBERLAND FEEDERS

TRI-COUNTY Can Custom Design, Install And Service All Of Your Bulk Bin And Feed Delivery Needs. Custom Made Boots And Drops Are Also Available.



TRI-COUNTY
 CONFINEMENT SYSTEMS INC.
 608 E. Evergreen Rd., Lebanon, PA 17042

Ph: 717-274-3488
 WE SHIP UPS DAILY
 Hours: Mon.-Fri.
 7:00 to 4:30;
 Sat. 8:00 to 12:00

