

# Pork Prose

(Continued from Page C2)

## What Really Matters?

Use high calcium limestone. And we have plenty of it in the Northeast.

If you're not sure what you're getting, the suppliers can provide specification sheets on all of their products. There should be a listing for calcium (or calcium carbonate) and magnesium (or magnesium carbonate).

Shoot for a calcium level of least 38 percent (equivalent to 95 percent calcium carbonate). And try to buy limestone that has no more than 1 percent magnesium. This is equivalent to 3.5 percent magnesium carbonate (MgCO<sub>3</sub>) or 1.6 percent Magnesium Oxide (MgO).

What if you're buying complete feed or a vitamin mineral premix? Not to worry, the high calcium limestone is already there.

## Summary

1. The most important aspect of limestone is the calcium content. Buy a product that has at least 38 percent calcium. Products with less than 38 percent calcium will have increasing amounts of magnesium, which limits the digestibility of calcium.

2. Besides magnesium, limestone contains a lot of impurities. The major elements are aluminum, and iron. The aluminum is unavailable to the pig, and the iron is only partly available, so neither of these contaminants presents any reason for concern.

3. Ideal particle size of the limestone is in the 300-1,000

micron range. The supplier can provide you with specifications on their materials.

4. The notion that a premix or any other product is nutritionally superior because it contains mid-western limestone (and not north-eastern limestone), is silly.

## REFERENCES

- Axe, Dirk. 1988. Limestone: The not so generic source. FEEDSTUFFS. Apr 11, 1988. p 16  
 Axe, Dirk. 1989. Limestone. FEED MANAGEMENT. Vol 40 (4). pp. 9-15.  
 Axe, Dirk. 1989. Solubility should be used in selection of limestone product. FEEDSTUFFS, December 25, 1989. pp. 16-17.  
 Axe, Dirk. 1991. Macromineral impurities deserve to be investigated. FEEDSTUFFS April 8, 1991. pp. 16-18.  
 Cromwell, G. L. 1989. Requirements, biological availability of calcium, phosphorus for swine evaluated. FEEDSTUFFS. June 5, 1989. pp 16-20.  
 Muirhead, Sarah. 1991. Uniformity of particulate calcium sources varies by feeding system. FEEDSTUFFS, Apr 15, 1991. pp. 12, 21.  
 National Academy of Sciences. 1980. Aluminum. In MINERAL TOLERANCE OF DOMESTIC ANIMALS. National Academy Press. Washington, D.C.

## SWINE PRODUCTION COURSE OPEN TO PRODUCERS

This fall, producers may attend undergraduate lectures and labor-

atory sessions of Penn States Animal Science 406 — Swine Production and Management — free of charge on a space-available basis.

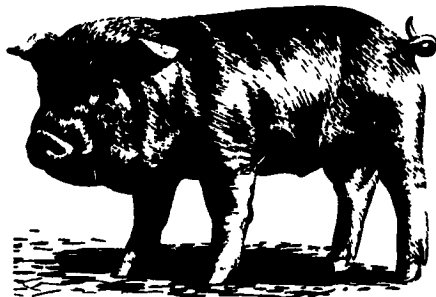
Taught by Ken Kephart, the course covers all aspects of swine production, including management, nutrition, genetics, facilities, and herd health.

Producers will enjoy many hands-on laboratory exercises including artificial insemination, baby pig processing, feed grinding and mixing, and production simulations in a computer lab.

An Sc 406 lectures are offered Mondays and Fridays from 9:05 a.m.-9:55 a.m. beginning August 28. Laboratories are taught on Wednesdays from 9:05 a.m.-11 a.m.

To participate, producers should call one week prior to the start of the course to ensure adequate space and materials.

For more information and a copy of the course outline, call or write Ken Kephart, 324 Henning Building, University Park, PA 16802, (814-863-3671).



# Steers In Spotlight At Fair

NEWPORT (Perry Co.) — Under the bright lights of the show ring at the Perry County Fair, Erin Benner of Millerstown led her heavyweight market steer to the championship.

Selected by judge Bob Mikesell of McAlisterville, the 1,321-pound steer topped a market show with a record number of entries. The steer also was named FFA champion steer.

The reserve champion market steer honors went to a middle-weight Limousin-Charolais cross exhibited by Grant Finkenbinder of Duncannon. The steer also was named 4-H champion steer.

The FFA reserve champion

steer was exhibited by Amy Byers of Liverpool, while the 4-H reserve champion steer was shown by Eric Finkenbinder of Duncannon.

During the beef showmanship contest, Patrick Finkenbinder and Rachel Finkenbinder, both of Duncannon, took 4-H champion and reserve champion showman respectively, while exhibiting their skills in front of the large crowd around the show ring. The top FFA best showman honors went to Scott Byers, Liverpool, while the FFA reserve champion beef showman honors went to Amy Byers.



Patrick Finkenbinder shows his champion showmanship skills at 1992 Perry County 4-H & FFA Beef Show.

# ~ ATTENTION ~ DAIRYMEN & LIVESTOCK PRODUCERS A GOOD THING JUST GOT BETTER! ★ NEW FOR 1992 - BOLT ON TEETH ★

## FARMING FOR THE FUTURE with **Agri-Way**

→ A new AERWAY can be your ticket to INCREASED PROFITS ←  
and help you comply to your conservation plan.



"The year we ran the Aer-Way over half the land where we had harvested corn silage. We then spread between 4,000-5,000 gallons of liquid manure per acre and disked the seed bed to prepare for small grains. We were absolutely amazed at the difference where we used the Aer-Way and one disking. My non-Aer-Wayed ground was disked 3 to 4 times and still wasn't as good. I would recommend the Aer-Way to other farmers as it softens the ground and lets rain and manure penetrate instead of running off."  
W.W. Sandford III -  
Kenwood Farm, Orange, Virginia

Helping Ranchers and Dairymen Make Better Hay and Pastures Throughout the Nation. UNIVERSITY TESTS SHOW

- Aer-Way-ing Pays
- Increases yield and quality
- Important part of intensive hay and pasture management
- Help conserve valuable soil, fertilizer and water.
- Reduces compaction
- Improves manure management
- Reduces run-off
- Promotes extended stand life



"Earlier this spring, I used the Aer-Way Implement and Aer-Way chain harrow on my rolling pastureland. This was done to open up the ground to get water into the sloping grasslands. At the same time I pulled the Aer-Way chain harrow to scatter the cattle manure around. Even after the dry summer we had, I noticed that the Aer-Wayed ground held the moisture better and we got thicker and taller regrowth where we ran the machine."  
Dr. Rex Wilhelm D.V.M., Stuart, Iowa



"I have better pastures since I started using the Aer-Way to aerate and renovate my pastures. Using the Aer-Way has helped me get the nutrients where they are needed. I would not recommend fertilizing or liming without running the Aer-Way first."  
Sandy Fisher, Brookview Farm - Beef Cattle Operation  
Manakin-Sabot, Virginia



**FLEXIBLE CHAIN HARROW**  
One of the heaviest in the industry.  
INTENSIVE GRAZING MAINTENANCE  
PASTURE RENOVATION  
SEED BED PREPARATION

- Yes, please send me free information about your:
- Flexible Chain Harrow
- Aer-Way Implement

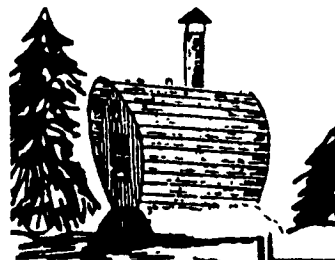
# AGRI-QUIP CORPORATION

3920 MARKET STREET, CAMP HILL, PA. 17011

1-800-228-8032

## DRASTIC FUEL COST REDUCTIONS

With This Attractive Outside Wood & Coal Heating System



Call Us About Free Literature

- No Dirt or Smoke Inside
- Huge Savings on Fuel Cost
- Large Capacity
- Safe O Pressure System
- Heats Domestic Hot Water
- Hot Air or Hot Water Compatible
- Can Air Condition House
- Freeze Proof
- Coal Grates Available
- Good Looking
- Oil or Gas Backup (Optional)

R & K SERVICES  
RD #4, Box 4262A  
Mohnton, PA 19540

(215) 856-1386  
Rod or Kathy

**SALES & SERVICE**

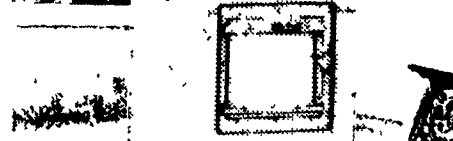
For More Information Contact:

Lois Foy Home Pro-Kare, Inc.

3293 N George St., Emigsville, York, PA 17318

(800) 582-7554, 717-764-4359 or 259-9929

Ideal For New Construction And Existing Homes



See Unit At  
York Fair Sept. 11-19  
Solanco Fair Sept. 16-18  
New Holland Fair, Sept. 30-Oct. 3

Allergies Caused By Indoor Burning Of Wood & Coal!!  
Keep Fire Damage & Dirt Outside

UL LISTED ALL STAINLESS STEEL CONSTRUCTION  
ANY SIZE TO MEET YOUR NEED

\* FURNACE SITS OUTSIDE - 10'-100' from home/business/barn.

\* CONVENIENT - Load every 10-12 hours. Burns logs up to 16" in diameter & 30" long. Stops most log splitting.

\* THERMOSTAT CONTROLLED - Even heat.

\* EASILY CONNECTS to forced Air/Hot Water System. Needs no chimney or water heater. Heats domestic hot water year round. Warm months of the year firing every 6 to 10 days.