

### Public Auction Register

Closing Date Monday 5:00 P.M.  
of each week's publication

SAT SEPT 26 - 9AM, Real Estate & Office Equipment 10AM, Real Estate. Located At 255 York St, Hanover, Pa James Miner, Auct

SAT SEPT 26 - 9:30AM, Valuable Real Estate, Autos, Cub Cadet Mower, Tools, Antiques, Cherry & Pine Furniture, Pottery, Stoneware, China, Glassware Located On Premises 3200 Lancaster Pike, Rt 472 1/2 Mile N Of Oxford, Pa By Order, Estate Of Helen T Kirk Whiteside Auction Service

SAT SEPT 26 - 9:30AM, 3rd Annual Auction, Nursery Stock Located Approx 1.8 Mile North Of Merchants Bank On Route 309, Schnecksville, Pa Or 2 1/2 Mi South Of Route 100 On Route 309 James W Mohr & Son Auction Co

SAT SEPT. 26 - 10AM, 12 2 Acres Limestone Farmette, Gorgas Tall Clock, Antiques Located 1190

Indiantown Road, Stevens, Pa. From Ephrata Take Route 272 North Approx. 3 Miles, Turn Left Onto Wabash Road. Go To Stop Sign, Continue Across Intersection, (This Is Now Indiantown Road) 1 Mile To Property On Right, West Cocalico Township, Lancaster County, Pa. Auction By, Lydia M. Hoover Estate Paul E. Martin Auction Service.

SAT. SEPT. 26 - 10AM, Fall Heifer Sale New Holland Sales Stables, Inc., New Holland, Pa.  
SAT. SEPT. 26 - 10AM Steam engines, steam roller, tractors & gasoline engines. From I-66 west of Washington, D.C. take Exit 47 (route 234) south to first light turn right onto Balls Ford Rd. approx 3 miles to auction on right For Mr. & Mrs William H Clem Pangle Real Estate & Auction Co. Inc.

SAT. SEPT. 26 - 10AM Nursery Stock Auction Kutztown Produce Auction, RD 4 Box 4153 A, Fleetwood, Pa. 19522.  
SAT. SEPT. 26 - 10AM, Truck & Car Auction Located Annandale, N.J 2 Mi. East Of Clinton, N.J Use Rt. 22 To Petticoat Lane (Youth Correctional Inst. Sign) To 1st Rt. Turn Onto Spencer La. 1st Left, To Yard. Sale Conducted By, Col. Fred. R. Daniel Aucts Inc

### 3RD ANNUAL AUCTION NURSERY STOCK SAT., SEPTEMBER 26, 1992

9:30 A.M.  
Located Approx. 1.8 Mile North Of Merchants Bank On Route 309, Schnecksville, Pa. Or 2 1/2 Mi. South Of Route 100 On Route 309.

Potted, Balled & Burlapped. Dealers Welcome. Junipers, Arborvitae, Biota, Globe Arborvitae, Pine, Spruce, Fir 100's, 100's Of Plants. Ideal For Fall Sales & Live Christmas Tree Sales. For More Info. Call 215-346-6262 Conditions Cash Or Approved Check James W. Mohr & Son Auction Co. AU-000627L Refreshments

### PUBLIC AUCTION OF VALUABLE 10 ACRE FARMETTE SATURDAY, SEPTEMBER 26, 1992

Auction Time: 1:00 P.M.  
Location: 2146 Oak Lane, Manheim, Pa. From Manheim go East on High St. to Penryn Road. North on Penryn Rd. approx. 3 8/10 miles to Oak Lane. Turn left to first farm left. Penn Township, Lancaster County, Pa.

Frame farm house includes spacious kitchen w/ cabinets; family room; living room; sewing room; (4) bedrooms; 1 1/2 baths; laundry room; storage area; oil fired hot water heat; carpet; attic storage; basement; balcony porch; well water; septic system;  
Bank Barn - livestock and storage area. 16'x55' stave silo w/bunk feeder; 38'x88' livestock barn; 40'x80' steel machine shed; 3 bay work shop and garage.

Concrete barnyard with loading ramp; approx. 7 acres of fenced pasture; road frontage on Penryn Road and Oak Lane; nice landscape w/mature shade.

Note: This would make a lovely horse or gentleman farm. This property is well maintained ready to be moved into. A secluded farm setting be sure to check this farm at open house: Saturday, Sept. 12 12-3 p.m., Saturday, Sept. 19 12-3 p.m. or by appointment phone Auct. John D. Stauffer 717-665-5099.

Terms: 10% of purchase price day of auction. Balance at final settlement to be held on or before November 27, 1992.

Attorney: J.D. Young

Auction by

**RONALD H. & CHRISTINE F. ROHRER**

Auction managed and conducted by: John D. Stauffer Auctioneers AU-1509-L Phone 717-665-5099 Manheim, Pa. 17545

### PUBLIC AUCTION

CHESTER COUNTY REAL ESTATE

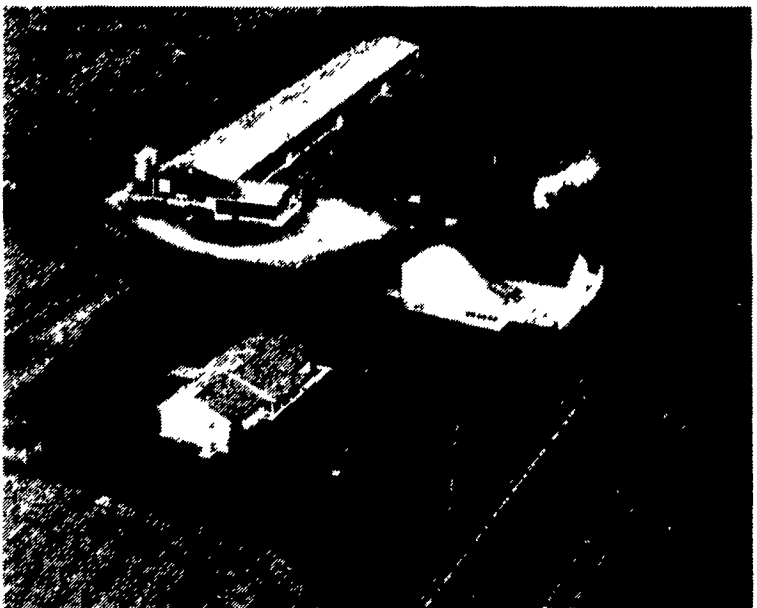
VALUABLE 69 ACRE FARM M/L

(Known as Landis Cackleberry Farm)

N.H. SKID LOADER - PERSONAL PROPERTY - ANTIQUES

TUESDAY, SEPTEMBER 29, 1992

10 A.M.



LOCATION: Along Rt. 30 West Sadsbury Twp. R.D. #1, Parkersburg, PA. From Lancaster take Rt. 30 East approx. 4 miles East of Gap and Rt. 41 intersection OR From Coatesville/Exton take Rt. 30 West approx. 7 miles to farm on right approx. 1 mile West of Rt. 10.

Real Estate consists of productive 69 Acre farm w/two dwellings. Located along Rt. 30 and N. Black Horse Road w/approx. 2800' road frontage. Approx. 60 Acres tillable. House #1 main farm house is 2 1/2 story frame w/siding, 4 bdrm. dwelling w/2 full baths, country eat-in kitchen w/cherry raised panel cabinets and appliances, formal dining rm., living and family rms., and first floor office and laundry, full attic and basement storage. Oil HW baseboard heat and new electrical service. House #2 is a 4 yr. old custom built, 3 bdrm., 1 1/2 bath, Ranch style dwelling w/no maintenance siding exterior. Eat-in kitchen w/oak raised panel cabinets, formal dining rm., living rm., and first floor laundry. Oil HA heat w/central air. 2 car attached garage w/auto openers. Barn and Out Buildings include large frame Bank Barn, oversized 3 car garage w/auto openers, and Hi-Rise Poultry house 44'x408' w/Layer set up for 45,600 capacity and attached 35'x40' egg packing and cooling room. NOTE: Farm Zoned Commercial and Residential. Farm and Houses open for inspection by Appointment or Open House dates - Sat., September 12, 19, 26 from 1 to 4 P.M. Terms 10% Auction day, Balance 12/31/92. For details, pictured brochure, and land plotting, Call Auctioneers 717-733-1006. Real estate offered 2 PM.

Complete Listing Later Issue

Terms By:

**MILTON B. & THELMA K. LANDIS**

#717-442-8750

Kenneth Howard Esquire

Auction Conducted By: Randal V. Kline, Lloyd Kreider Roy E. Good, Jr., Auctioneers #AU499L #717-733-1006



KREIDER & KLINE AUCTIONEERS

### 10 ACRE FARMETTE PUBLIC AUCTION SATURDAY, OCTOBER 24, 1992

12:00 NOON

150 Mountain View Road Myerstown

Jackson Township, Lebanon County, PA

REAL ESTATE: Consists of 10 level acres all tillable, 6 acres is now in corn, 4 acres is in lawn. The home is a 2 1/2 story aluminum sided home. The first floor has a large eat in Snitz Creek kitchen, large living rm, office, full bath and separate laundry room. The second floor has 3 hall entered bedrooms, oil hot water furnace, other buildings on the farm include a 26 x 48 garage, shop building. It also has one furnished, insulated and heated room. The property is further described in Deed Book 93 Page 80 in the Lebanon County Recorder of Deeds office. If you are looking for a neat, clean well kept property in the country, don't miss this auction.

Inspection by calling auctioneers (717) 867-5221.

TERMS: 10% down on the day of auction balance due December 14, 1992.

\*\*Announcements made the day of the sale take precedence over advertised matter\*\*.

DIRECTIONS: Go 2 miles north of Myerstown on Rt 645 and turn right at the Union Meeting house Church onto Mountain View Road, First property on right, follow auction arrows and see auction signs.

Conditions By: **CARL H. AND MARY ELLEN FOX**

Attorney:

Kenneth Sandoe, Esq.

Auction Conducted By: Nelson L. Ebersole, Auctioneer Lic # - AU-001307-L (717) 867-5221 or (717) 867-4304

### PUBLIC AUCTION

Saturday, September 12, 1992 9:00 A.M.

Selling Real Estate, Antiques And Personal Property Of The Late Robert Wert, 16 West Specht Street, McClure, PA.

REAL ESTATE: Parcel #1 - Lovely In Town Duplex 2 1/2 Story Home Situated On A Corner Lot 37 1/2 Feet By 145 Feet. Designated As Parcel No. 221 On Snyder County Tax Map MC-1 First Floor Apartment Consists Of Kitchen, Dining Area, 2 Bedrooms, Large Living Room, Full Bath And Storage Area. Second Floor Apartment Contains Eat-In Kitchen, Dining Room, Living Room, Bedroom, Balcony, Full Bath, With Two Rooms on Third Floor. The House Has Basement, 2 Practically New Furnaces And New Vinyl Siding, In Excellent Repair. On Rear Lot Is Located A 3 Car Garage.

REAL ESTATE: Parcel #2 - 80.99 Acres Of Mountain Land DIRECTIONS: From McClure, Turn Right Off Of Route 522 At Original Italian Pizza And Travel North Over Jacks Mountain To New Lancaster Valley, Proceed West In Valley, Approximately 3 Miles, Signs Posted, Land Is On Left Or South.

A Prime Piece Of Mountain Land Bordered On The North By Honey Creek And On The South By State Forest Land. A Stones Throw From Reeds Gap State Park. This Track Borders Thousands Of Acres Of State Forest Land. Designated As Parcel No. 12 - 21 105G, Armoah Township, Mifflin County, Record-Book 367/P. 133. TERMS OF REAL ESTATE: 10% Down With Balance In 45 Days. Parcel #1 To Be Offered At 12:00 Noon - Parcel #2 To Be Offered At 1:00 P.M.

ANTIQUE & COLLECTIBLES

Oak Extension Table With 4 Boards; Large Oak Kitchen Cabinet, Oak Buffet; Oak Dresser With Applied Carvings; Oak Cabinet; Oak Washstand; Oak Parlor And Plant Stands, Tall Oak Chest, Top Drawers, Serpentine; Oak Potty Seat; Larkin Style Fall Front Desk; Slant Front Desk; Wicker Rocker; Iron And Brass Bed; Organ Stool; Wooden Bench; Misc. Oak Chairs; 3 Plank Chairs, Exceptional Hook Rug With Dog; Other Misc. Hooked Rugs; Oval Wicker Table; Treadle Sewing Machine; Granite Colander; Blue Swirl Granite Kettle; 6 Blue Swirl Granite Pie Pans; Misc. Granite ware; Crockery Bowl, Misc. Crocks; Lunens; Crocheted Items; Egg Basket; Large Oak Split Basket; Brass Faced Scale; Shoe Lath; Draw Knife; Middlewarth Chp Tin; Milk Bottles, Airy Dale Dairy - W.W. Snook - McClure, Lewistown Pure Milk, Waples Cream Top - Tyrone, Ulah & Shunkel - Lewistown; Metal Sprinkle Can; Rug Beater, Drying Fingers; L.D. Kline Fly Swatter; Ben Hur Thermometer; And More...

GUNS: 22 Rifle, Ranger, Single Shot; 32 Cal. U.S. Revolver Co.

CAR: 1980 Toyota Tercel, 5 Speed, 63,000 Miles, Garage Kept.

HOUSEHOLD ITEMS

G.E. Refrigerator; Apartment Size Electric Range; G.E. Washer & Dryer; Chest Style Freezer; Metal Cabinet; Chests Of Drawers, Sleeper Sofa; Misc. Upholstered Chairs; Single Bed; G E Sweeper; Luggage; Console Stereo; Sm. Metal File Cabinet, Juicer; Kitchen Supplies; Etc.

TOOLS - ETC.

20 Ft. Aluminum Ladder; Step Ladders; Craftsman Gas Powered Reel Lawn Mower; Push Reel Mower; Radio Service Manuals, 1926-1956; Wheelbarrow; Creeper; Jumper Cables; Car Ramps, Appliance Cart; Kerosene Barrel; Huffy 26" Bicycle, Lawn And Garden Tools; 1/2" Elec. Drill; 4" Vise; Augers, Hammers, Wrenches; Exceptionally Large Selection Of Hand Tools, Some Still In Original Packages, Many Surprises.

ESTATE OF: Robert Wert

KENNETH E. HASSINGER (717) 658-3536 AU-001532-L

NEIL A. COURTNEY (717) 539-8791 AU-002651-L

### PUBLIC SALE

OF

BUILDING MATERIALS, LUMBER, ETC.

FRIDAY, SEPT. 11, 1992 AT 5:00 P.M.

Location: Approx. 4 mi. north of Shippensburg along Rt. 11. 1700 Ritner Hwy., Cumberland Co., PA.

WINDOWS AND DOORS

Andersen double pane house windows, 38"x56", 56"x71", 26"x40", 2-56"x76", 2-56"x116".

Inside doors - 36"x80", 34"x81", 6-29"x80", 6-26"x80", 2 inside sliding doors 5'x7', double doors 48"x82".

PLYWOOD AND LUMBER

200 pcs. 1/2" sheeting plywood, 50 pcs. 3/4" sheeting plywood, 400 pcs. 2"x4"x8", 100 pcs. 2"x6"x12", 150 pcs. 2"x10"x16", 75 pcs. 2"x8"x16", 50 pcs. 2"x8"x18", 25 pcs. 2"x8"x22", 2000 running feet oak hardwood flooring.

Treated lumber- 15 pcs. 6"x6"x12', 30 pcs. 4"x6"x16', 30 pcs. 4"x6"x20', 25 pcs 4"x6"x10'.

CABINETS, BATHROOM FIXTURES, ETC.

12' kitchen sink w/wall cabinets, 3 bathtubs, 2 commodes, 5' vanity w/bowl, oil-fired hot water heater, oil-fired hot air furnace w/air conditioning unit, 200 AMP Square D service panel, pile of copper pipes, electric wire.

Westinghouse automatic washer and clothes dryer, 5 carpets.

Terms by:

**LAWRENCE MARTIN**

Shippensburg, PA

Ph. 717-530-8443

Auction Conducted By:

Lamar Sensenig, Auct.

Lic. Au-001803-L

Ph. 532-9160

Terms: Cash or good check day of sale. No out of state checks. Not responsible for accidents.