

# Championships For Reiffs

(Continued from Page B2)

"At Keystone, we never even have gotten close to winning, because open shows are much more difficult," Lyndon said.

The Reiffs purchased lambs from many different breeders such as Don Witt, Tim Fleener, and Tom Slack.

"I like to see how much I can buy with the money I have to spend," Lyndon said. "It's totally unrealistic to focus on some sheep because they sell for \$3,000 — and we don't have that kind of money."

Talking about money, the brother and sister pool the prize money and the expenses. They are saving it toward college. Lyndon plans to study architecture while the thought of being a corporate lawyer fascinates Lisa.

Lyndon, who is 18 years old, will be a senior at Lampeter Strassburg and Lisa, who is 14, will be a freshman.

"When I'm too old to compete in 4-H, I'd like to start a Dorset breeding flock," Lyndon said. "I always liked Dorsets the best of all the breeds, but it is harder to win a show with one than with a black-faced sheep."

Despite most judges preferring black-faced sheep, Lyndon is pleased that he did win a show with a Dorset last year.

"It won't be nearly as much fun to compete when Lyndon can't anymore," said Lisa, who believes that their sheep projects have formed a close bond between them.

"Most of my friends don't understand why I like to raise sheep," Lisa said. "They say, 'Aw, you're going to sell such a cute sheep and have it killed?'"

Lisa said, "When you know you're raising them for that purpose, you don't get nearly as attached."

Nevertheless, Lisa, who does much of the cooking since her mother manages the Kitchen Kettle House in Intercourse, admits that she can't cook lamb because it would be too hard knowing that she had raised it.

Since Lyndon works part time at a shoe store and part time in his dad's and uncle's landscaping business (R & R Landscaping) during the summer, he doesn't spend as much time with the sheep as Lisa does. He also was part of a mission team that worked at a retirement home in Florida.

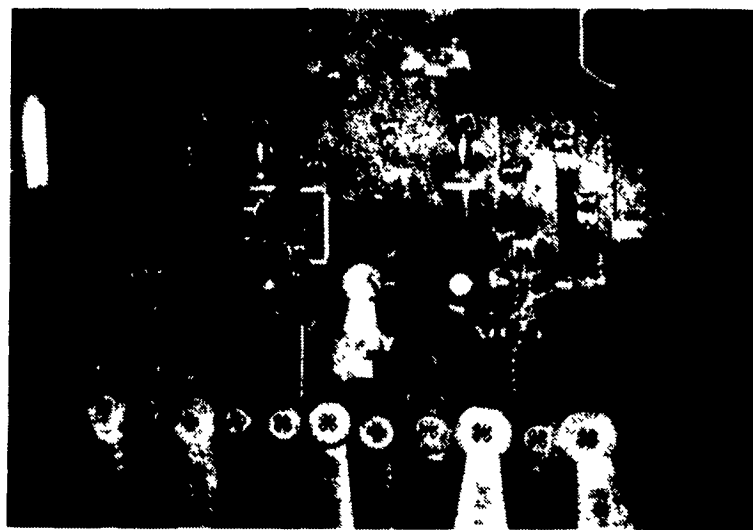
Lisa estimates that she spends one hour feeding the sheep each morning and three hours feeding and exercising them in the

evening. "I used to like taking care of the sheep better than showing them," Lisa said, "but now I like showing better."

As far as a favorite breed, Lisa said, "Suffolk, crossbred, Hampshires — I like them all. But Dorsets seem to be calmer."

When Lisa is inside the house and hears the sheep bleating, she can tell each one by its bleat. "The smaller ones bawl more," she said. "We got a laid-back old named Frank who never bawls."

The siblings' parents are Lloyd and Laura Reiff. They have a 21-year-old brother Lloyd, who never got into sheep showing, but showed steers.



These trophies, ribbons, and plaques show the success the Reiffs had in one year of sheep competition. Each year, the Reiffs put the previous year's trophies and ribbons in the attic and begin with a fresh accumulation of awards.

## Bobcat 7753 Long-Wheelbase Skid-Steer Loader

### It's What's Inside That Counts!



Swingout Tailgate - one side engine and engine components service. Easy access to oil cooler and radiator (which are well protected). No need to raise lift arms.

Operator Friendly. You'll find the 7753 offers easy operator entry/exit into a roomy cab.

Easy-to-use foot pedals control loader hydraulic functions, while two steering levers allow precise maneuverability.

Durable axles! Bobcat 7753 axles are solidly built then specially heat treated. Axle Bearings NEVER need greasing because a sealed oil bath keeps them lubricated. New axle hub design protects axle seal from damage from wire or twine. Hub is easily removed if service is required.

Dependable drive chains that NEVER need adjusting. The "bow tie" design uses prestressed, heavy-duty drive chains in two short continuous loops per side. That means long-life in the most rugged use and NO periodic, time-consuming drive chain adjustments.

#### Experience America's Best.

Melroe company has over 30 years of skid-steer loader experience — longer than anyone else. That's one of the reasons *Fortune Magazine* has twice recognized the Bobcat loader as one of the 100 products "America Builds Best."

#### Reliable Components.

Other than a few daily checks and fills, you can rely on the PERFORMANCE of the 7753 Bobcat. It has been designed and built with durability and low maintenance in mind.

#### Great Serviceability!

The Bobcat 7753 has been designed to be serviced quickly. For example, there's single-side access to the transversely-mounted engine, a lift-out oil cooler for easy cleaning and a tip-up cab to expose hydraulic and hydrostatic components. For repairs, the exclusive BOSS® System can help quickly diagnose system problems. These features, along with a factory-trained service technicians and "top-shelf" parts availability, mean your loader can be back on the job in no time.



#### TOTAL HAND CONTROL!

Dealer-Installed Option!

- Easy Wrist-Action Control.
- Push-Button Auxiliary Hydraulics For Total Hand Control. (Available only on 50 Series loaders. 40 Series loaders utilize foot pedal to activate auxiliary hydraulics.)
- Easy-Grip Handle.

The full-line of Bobcat skid-steer loaders features different model sizes, with operating capacities ranging from 600 to 4000 lbs. to fit your needs.



**ASHLEY**  
WOOD & COAL STOVES  
NEW & USED FURNITURE  
**FISHER'S FURNITURE, INC.**

Barre, Pennsylvania 17503  
Rt. 896 at Georgetown — 6 Miles  
South of Strasburg  
Hours: Mon-Thru Thurs. 8-5, Fri. 8-5, Sat. 8-12

**HARDY**  
"Outside"  
Wood Furnace

**Easily Connects To Forced Air/Hot Water Systems**

**Perfect For**

- New Homes
- Existing Homes
- Swimming Pools
- Greenhouse • Barn
- Milkhouse • Office
- Business Places

**SAVES MONEY** - Heats your home and domestic hot water (saves to 25% of electric bill). No need for building or chimney.

**SAFE** - Furnace sits outside - eliminates fire danger and flue fire forever.

**CLEAN** - No smoke, wood, ashes, dust in the home.

**CONVENIENT** - Load furnace every 10-12 hours - burns logs up to 16" in diameter, 30" in length.

**All Stainless Steel Thermostat Controlled**

**ATTENTION FARMERS** Save \$50.00 to \$100.00 on heating and hot water costs at barn and milkhouse.

For More Information Contact **STANLEY WENSEL, JR.**  
General Contractor  
Box 24, Barree, PA 16615  
814-669-4558

We Install 24 Hr. Service

<p>Carlisle, PA <b>PETERMAN FARM EQUIPMENT</b> 717-249-5338</p>	<p>Mill Hill, PA <b>DUNKLE &amp; GRIEB</b> 717-726-3115</p>	<p>Quarryville, PA <b>GRUMELLI'S FARM SERV.</b> 717-786-7318</p>	<p>Millinburg, PA <b>BS &amp; B REPAIR</b> 717-966-3756</p>
<p>Lebanon, PA <b>EVERGREEN TRACTOR CO.</b> 717-272-4641 1-800-441-4450</p>	<p>Hanover, PA <b>SHEETS BROS., INC.</b> 717-632-3660</p>	<p>West Lawn, PA <b>CLARKLIFT SERVICES</b> 215-670-2950</p>	<p>Honesdale, PA <b>CHARLES H. SIEPIELA, INC.</b> 717-253-3334</p>
<p>Hatfield, PA <b>LCL CONSTRUCTION EQUIP. SALE CO.</b> 215-362-2510</p>	<p>Honey Grove, PA <b>NORMAN D. CLARK &amp; SON INC.</b> 717-734-3682</p>	<p>Bathlehem, PA <b>215-868-1481</b></p>	<p>Needmore, PA <b>CLUGSTON FARM EQUIPMENT</b> 717-573-2250</p>
	<p>Muncy, PA <b>BEST LINE LEASING, INC.</b> 717-546-8422 800-321-2378</p>		<p>Towanda, PA <b>S.P.E. INC.</b> 717-265-4440</p>