





Thanks & Congratulations to

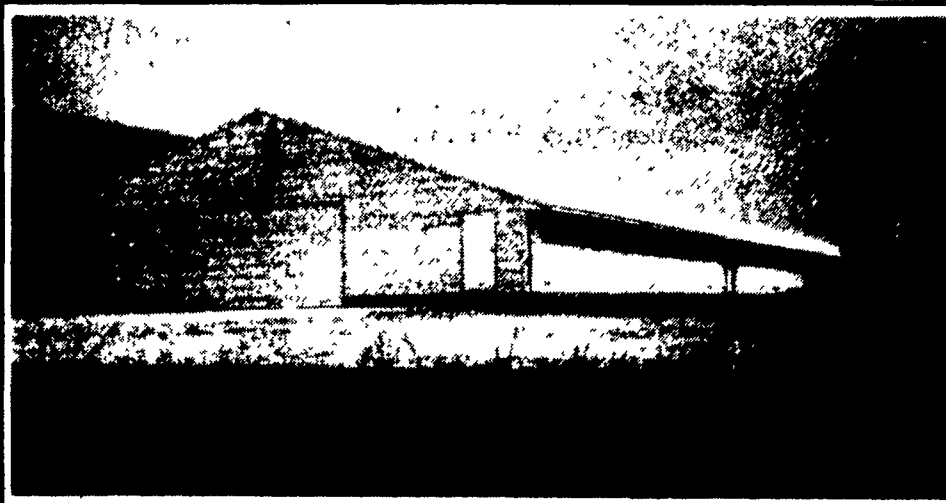
DAVID and JODY MOYER

Middleburg, PA

ON THEIR ALL NEW 50'x 532' TURKEY HOUSE

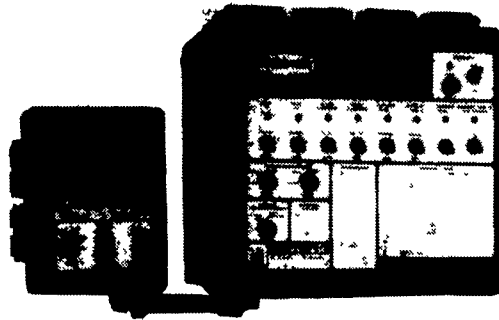
This Facility Features:

CHORE-TIME Feeding, **PLASSON** Drinkers,  Curtain,  **Coolair** Fans



50'x 532' Single Story Curtain Sided Building

SUPER 6™ Environmental Controller

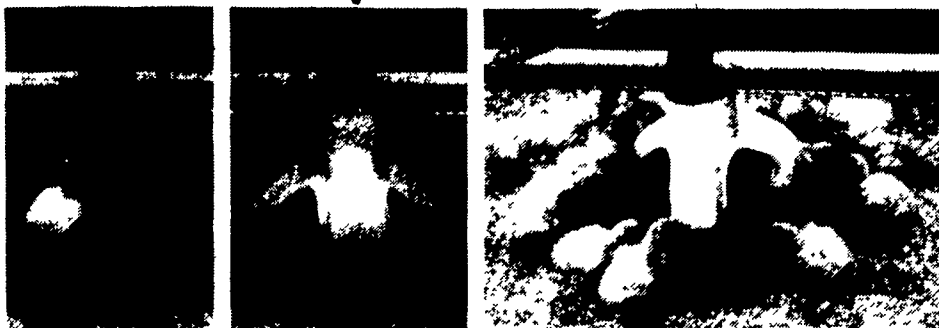


FEATURES

- Easily installs in new or existing poultry houses
- Controls heaters, brooders, exhaust fans, summer fans, foggers, and curtain operator
- Does not allow curtain to stop between 12-inches open and fully closed
- Disables heaters until curtain is closed
- Easy to understand operating instructions on lid

SUPER 6 Environmental Controller (shown at right) is designed to work with Chore-Time's 6-Stage Electronic Thermostat (on left)

FOR POULTS H-2



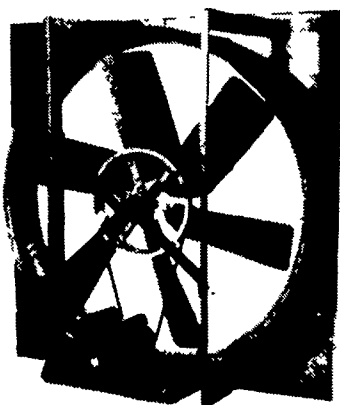
A quick turn opens feed chute ready for brooding. Then feed fills the pans so poult can see it and start eating.

FOR GROWING-FINISHING ATF



Our Model H2 Feeder starts poult fast. In only a few weeks they can leave brooding house.

After brooding, birds go into either growing or finishing house using our big feeders



Coolair 48" FANS

Power is applied through V-belts directly to the propeller with blade load concentrated directly over the bearings to eliminate overhang bearing load



Heat Provided

By



Shenandoah

17,000 BTU
Stainless Steel
Electronic
Ignition Space Heaters



CONTRACTS AVAILABLE FOR NEW OR REMODELED BUILDINGS

Broilers - Turkeys - Breeders - Layers - Pullets - Hogs

Call Our Toll Free Number 1-800-673-2580



Lancaster, PA
Sept. 30-Oct. 1, 1992

Equipment, Installation & Design By



NORTHEAST AGRI SYSTEMS, INC.

FLYWAY BUSINESS PARK

139 A West Airport Rd. Lititz, PA 17543

(717) 569-2702 1-800-673-2580



Building By

BUFFALO VALLEY CONSTRUCTION

RD #1 Box 304
Mifflinburg, PA 17844

(717) 966-4064