

Public Auction Register

Closing Date Monday 5:00 P.M.
of each week's publication

SAT SEPT 12 - 8 30AM, Household Goods, 10AM, Small Farm Items & Farm Equipment Located 3/4 Mile East Of New Bridgeville (York Co.) South Of Red Lion (Rt 74), Turn Left Onto Burkholder Rd., Fol-

low To New Bridgeville Go Straight To York Furnace Rd And Turn Left On Douglas Rd., 1st Farm On Right Seller, Estate Of Harold E Douglas Rentzel's Auction Service

SAT. SEPT 12 - 9AM, Tools & Equipment, Quality Woodworking Tools, Fork Lifts, Air Tools, Wide Belt, Sander, Planers, Jointers Located At Paradise Tobacco Sales Barn, Located 9 Miles East Of Lanc. 1 Block North Of Route 30 From Christ's Home And Leacock Presbyterian Church At Corner Of Meadow Lane And Hershey Ave., In Village Of Paradise, Lanc Co., Pa

owner, M.B. Glick Co. Diefenbach's Auctions
SAT SEPT 12 - 9AM Real estate, antiques, household goods, tools, 1968 Mustang convertible, 1988 Dodge Diplomat Located at 164 Scenic View Dr., Ephrata Twp., Lanc Co (Rt 272 in Ephrata, turn West onto Rothsville Rd, turn left onto Millway Rd to sale on left). For Robert C Huntington Horst aucts
SAT SEPT. 12 - 9AM, Real Estate - 80 99 Acres Of Mountain Lane Located From Harrisburg Travel North On Routes 11 & 15, Just North Of Liverpool Turn Left Onto Route 104 Into Middleburg, Turn Left

Or South Onto Route 522 To McClure. Estate Of, Robert Wert Kenneth E Hassinger & Neil A Courtney, Aucts
SAT SEPT 12 - 9AM, 1st Annual Klingerstown Fire Co Consignment Sale, Collectibles, vehicles, coins, farm equipment, lawn and garden, trees and shrubs, misc Held on the Klingerstown Carnival Grounds By Klingerstown Fire Co.
SAT. SEPT. 12 - 9AM Bucket Truck, elec car, tools, hardware, office equip Located 51 N Towamencin Ave, Lansdale, Pa (1 block off Main St) For Schlegel Electric Inc Alderfer Auction Company, auct
SAT SEPT 12 - 9AM Farm Machinery, construction equipment, tractors, trucks, tools From Dover, Delaware, take Rt 8 West 7 1 miles to Pearsons Corner, From Pearsons Corner, take Rt 44 West 1 mile Sale is on the right William H Beachy, auct

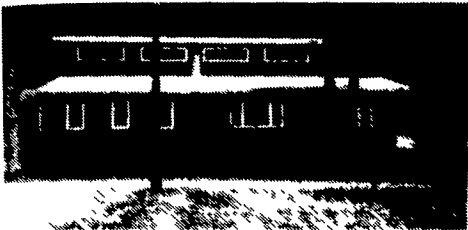
Lancaster Farming, Saturday, August 29, 1992-B37
SAT. SEPT. 12 - 10AM, Fairview Christian School Benefit Auction Of Quilts, Crafts, Winross Trucks, Guns. Located Fivepointville Firehall Located Along Rt. 897 In Village Of Fivepointville. From Rt 272 Take Rt 897 South Approx 4 Mi To Firehall On Right, Brecknock Township, Lancaster County Terms By, Fairview Christian School. Auction Conducted By Alvin Horning, Paul Martin, Roy Good Jr., Aucts
SAT SEPT 12 - 5 30PM Liquidation of New Archery Equip & Accessories York Archers, York, Pa From I-83 exit #7 take Rt 124 E (E Prospect Rd) approx 7 5 mi Turn right onto Manor Rd for approx 0 7 mi Bear right onto Gun Club Rd and follow signs to sale For Mel McKinley Melvin Haines, Ralph Brenneman, aucts
MON SEPT 14, Annual Fall Farm Machinery Auction Located At The Leba-

non Area Fairgrounds. Harry H. Bachman & Glenn T. Wenger, Aucts.
MON. SEPT 14 - 3 30PM, Real Estate, 2 Unit Apartment House, Antiques, Collectibles, Household Items Located Falmouth, Lanc. Co., Pa. Off Rt. 441 On Falmouth Road. Watch For Auction Signs. Seller, Estate Of Anna M. Brandt Rentzel's Auction Service
MON SEPT. 14 - 9AM, Office Furniture, Desks, Chairs, Adding Machines, Calculators, Coat Racks, 2&4 Drawer File Cabinets, Typewriter Stands, 125 Sects Of New Shelving (8 Shelves High), Pilot Shelving, Rollers & Belt Conveyors, And Misc Items Seller, Record Club Of America Rentzel's Auction Service
MON SEPT 14 - 9AM tractors, harvesting equip, tillage & planting, at Leba Area Fairgrounds, corner of Rocherty & Cornwall Rds., Leba Co Leba Valley Auction Co Inc

REAL ESTATE AUCTION

Location: Village Of Elk Grove, Pa. (Sullivan-Columbia Co. Line) 10 Miles North Of Benton. Follow Signs 4 Miles Off Rt. 118 At Grassmere Park.

Saturday, October 3, 1992
At 1 P.M.



This contemporary home features a kitchen, living rm., family rm., 2 full baths, 3 bdrms. & the potential for 2 additional bdrms. Home is in excellent condition and located on a large double lot next to state game lands with state parks & trout streams minutes away. Also on property is a 3 car garage, workshop & additional outbuildings. Home would make an ideal permanent home, summer home, investment property and due to size & location, an ideal property for a sportsmen's club. For inspection of property or a fact sheet call Auctioneers.

Open House: Thursday, Sept. 3, 6-8 P.M. & Sat., Sept. 5, 1-4 P.M. Home sold with owner confirmation. Owner financing available.

Owners:

MR. & MRS. WALTER MINTO

Auctioneers:
George S. Kapp Jr., CAI AU-2174L (717) 458-4384
Gele L. Derr AU-217L

"SHORT NOTICE" PUBLIC AUCTION

VALUABLE REAL ESTATE
OFFICE FURNITURE & EQUIP.
36' HI LIFT - TRAILER - TRUCKS
TUESDAY, SEPTEMBER 1, 1992

5:00 P.M.

LOCATION: 185 Musser Road, East Earl, East Earl Twp. Take Rt. 322 East of Blue Ball Approx. 1/2 mile turn right onto Musser Rd., to property on left.

REAL ESTATE consists of approx. 3/4 Acre Lot "Zoned Residential Medium" with 38'x64' three story frame building with approx. 6,000 sq. ft. of area. 1st Floor has 3 garage bays and 15 single storage units. 2nd Floor has large shop area and office area with central heat, air conditioning, and full bath. 3rd Floor has 6 individual offices with heat pump and central air and 1/2 bath.

NOTE: This is Very Unique Property with unlimited potential, currently being used as a contracting business with offices and storage. Public Sewer with 3 sewer connections included in sale. All offices, bath rms., heat and air conditioning, and windows, etc. only 2 yrs. old. Potential exists for multiple apartments with public water and sewer. INSPECTION By Appointment or Open House Saturday, August 15th, 1 to 4 P.M., Tuesday, August 18th, 2 to 6 P.M., Saturday, August 29th, 1 to 4 P.M. Terms 10% Sale Day, Balance September 30th.

For Details, Land plot plan, Call Auctioneers, 717-733-1006. "PROPERTY MUST BE SOLD" Real Estate offered at 6 P.M.

TRUCKS — TRAILER — HI LIFT

* '89 Ford 4-Wheel Dr., 4-Spd. 6 Cyl. Pick-Up Clean VG Cond.
* '89 Chev. 1500 Scottsdale 1/2 Ton Pick-Up w/AC & PS, AM/FM, Exc. Cond.
* Mark Handler 36' Hi Lift 4-Ton w/Perkins Diesel Eng.

* Wells Cargo 16' Enclosed Trailer
OFFICE FURNITURE & EQUIP.

Touch tone 6 line phone system with 7 individual phones, misc. 4-drawer file cabinets, like new wood and metal office desks, office desk chairs, misc. office supplies, adding machines, Minolta EP2100 Copier, Murata Fax Machine, Custom made enclosed receptionist desk and shelf unit, GOLD STAR COMPUTER SYSTEM COMPLETE WITH OKIDATA MICROLINE 391 PLUS PRINTER, Champion Accounting Software, and Word Perfect. Sharp portable Electronic Intel Plus Typewriter, 6' folding tables, Custom Oak file cabinet section with counter top, drawing tables, GE almond color Refrigerator (Like new), Steel 8' truck cap with ladder rack, Aluminum 8' truck cap with ladder rack, and some building supplies. Very few small items. Auction begins at 5 P.M.

Terms By:

DAVID I. STOLTZFUS and
PAUL E. LAPP
#717-355-0050/717-768-7078

Auction Conducted By:
Randal V. Kline, Lloyd Kreider
Roy E. Good, Jr., Auctioneers
AU#499L #717-733-1006



DAIRY HERD SALE

Friday Evening, September 4, 1992
7:30 P.M.

Located in Franklin County - off Route 30 in St. Thomas at Valley Bank - take St. Thomas-Edenville Road, 1 1/2 miles - first Farm on Left.

60 Head Holsteins
4 Grades - 56 Registered

This Dairy consists of 35 mature animals of which 26 are First and Second Calf Heifers - only 5 older animals sell.

10 Bred Heifers - due for Base Freshening - 2 due for later. Balance - Heifer Calves. 4 Registered Service age Bulls.

DHIA Records - Certified and Accredited - Classified

Majority of this Dairy sells recently Fresh or Due for Fall Milk - Fancy uddered young cattle.

A Few Featured Individuals Selling Include:

Super Good

First Calf Inspiration Daughter - Sells recently Fresh with 60 lbs on first test and milking more now. Dam EX 2E Bendmead with over 20,000 and right at 700 of Fat - 2nd Dam VG-87 with 17,500 of 4.5% Milk. 2 Yr. old Springing Quiet Cove Michael - due before sale to Mascot. Dam VG Mark with a 3 yr. old record of 22,000 of 4% - 892 Fat, 3.3 Protein. 2nd Dam GP Tony with 25,000 - 3rd Dam VG-86 with 19,000 of 4%.

For the Index Fans

2 Yr. old Cleitus Daughter - Due in January - Index No. Milk +2067 - Fat +67 - Protein +54 - Dam 27,000 Bell Daughter

Bull Stud Interest

2 Yr. old fancy uddered Trifecta - due before Sale to Mascot. Dam Sired by Bova - GP with 27,000 of milk. 2nd Dam VG with 19,000. 3rd Dam VG-88 with 21,000. 4th Dam VG-87. 5th Dam Ex. 6th Dam EX-93.

Top Pedigreed Individual

Fall Freshening Vokert Commanche - GP as a 2 yr. old - making a 17,000 lb. 2 Yr. old record - Due for November - Carrying a Michael calf. Dam - 87 pt. Tradition with over 24,000 - 800 Fat. 2nd Dam EX Ivanhoe Star with 21,000 - 750 Fat. 3rd Dam VG-87.

Want Something Different?

Fresh Bell Pontiac - Out of a GP Starbuck. 2nd Dam VG-88 with 30,000 and 1000 Fat. 5 more Generations of top Pedigree on this Heifer Fresh Cleitus - Made over 18,000 as 2 Yr. Old - Milking Heavy and Fancy Uddered. Springing Dubras Promotion Daughter - Bred to Boy George - out of a VG Dam.

For the Red & White Dairyman

Springing Rotate Grand Daughter - made 16,000, as 2 Yr. old - Due in August to Voltage. Dam VG-86 with over 21,000.

Don't Miss This

This Fancy Uddered Symbol - due in August to Chief Mark.

Others to Watch For

And this GP Astro Jet that is working on a 16,500 lb. record with 4.5 Test and 3.7 Protein.

Others Sell Sired by: Starbuck - Glow - Mark - Beautician - Steady - Winken - Cavalier - Dale.

Service Sires: Blackstar - Enhancer - Mascot - KOI - Micheal - Mark - Rambo - Cleitus - and others.

* * * * *

Looking for a Top Pedigreed Bull -

Sired by Elmcroft Conquest - from EX Tony with 28,000 of .4% milk. 2nd Dam is the great show cow Millerville Ultimate Rosalyn - EX-92 3 other top Pedigreed Bulls sell.

Don't miss this Auction for Milk, Pedigree and Youth - all in one package.

Owners:

DALE E. AND ANNA NISWANDER
1045 St. Thomas-Edenville Rd.
St. Thomas, PA 717-369-2598

Sale Managed By:

Kling's Auctions, Inc.
R.D. 1, Box 66, Landsburg, Pa.
License No. 500 717-789-3883



HUGE PUBLIC AUCTION OF BUILDING MATERIALS AND SUPPLIES

TO BE HELD AT
BUFFALO VALLEY PRODUCE AUCTION
SATURDAY, SEPTEMBER 5, 1992
9:00 A.M.

DIRECTIONS: From Harrisburg Take Rt. 11 & 15 North Of Lewisburg. Turn Left At Light Onto Rt. 45. Travel 6 Miles To Drehsbach Church Road. Turn Left. Travel 1/2 Mile To First Intersection. Turn Right. Approximately 300 Yards Turn Left. Follow Signs. A VERY GENERAL, PARTIAL LISTING FOLLOWS:

BUILDING MATERIALS

1,000+ 2"x3"x8' & 10'; 100's of Roof Trusses, Lg. Selection of Interior Doors, in 6 Panel and Flush, Vanity Base Cabinets, Kitchen Cabinets; Stainless Steel Sinks, Pre-Hung Metal Doors, Misc Comodes and Parts, Carpet, Windows in Andersen, Malta & Others, Vanity Tops, Bifold Doors, Misc Hardware, Siding & Roofing, Patio Doors, Counter Tops, Misc Railings; Soffit & Moldings, Vanity & Kitchen Spigots, Range Hoods; All Types of Lighting Fixtures, Freestanding Fireplaces, Fire Place Inserts, Storm Sash, Glazed Steel Sash, Overhead Doors & Door Parts, Misc Motors; Lumber, Roof Coating, Light Bulbs, Tub and Shower Units, Lg Selection of Counter Top Material, Formica and Others, Paint, and Much, Much, M-u-c-h, More

TOOLS AND MISC.

New And Used Tools, Garden Tools, Lawn Sweeper, Landscape Tree Cart

TRUCK LOAD OF PRODUCE GROCERY ITEMS

Paper Products, Cases Of Hot Fudge And Other Food Items

MISC. FLOWERS AND SHRUBS

Additional Consignments Accepted Till Date Of Auction "NO JUNK" Phone 717-539-8791 Or 658-3536 Auction Phone 966-1151

AUCTIONEERS NOTE: This Will Be A Large Volume Exciting Auction. Bring A Truck And A Friend - Selling With Two Auctioneers Throughout The Day.

KENNETH E. HASSINGER NEIL A. COURTNEY
McClure, PA 17841 Richfield, PA 17086
(717) 658-3536 (717) 539-8791
AU-001532-L AU-002651-L