



State Graded Feeder Pig Sale
at Westminster
Livestock Auction
Aug. 21, 1992

1183 PIGS, 2 WEEKS AGO 946. COMPARED TO THE ACTIVE SALE OF AUGUST 7, PRICES WERE 5.00-15.00 LOWER.
GRADE 1: 33 HEAD 35-37 LBS. LBS. 73.00-74.00; 97 HEAD 46-49 LBS. 64.00-68.00; 229 HEAD 50-58 LBS. 59.00-64.00; 89 HEAD 66-67 LBS. 55.00-60.00; 8 HEAD 79 LBS. 50.00.
GRADES 1&2: 59 HEAD 30-41 LBS. 61.00-71.00; 89 HEAD 42-48 LBS. 58.00-67.00; 113 HEAD 51-59 LBS. 56.00-64.00; 291 HEAD 60-68 LBS. 50.00-60.00.
GRADES 2: 92 HEAD 39-56 LBS. 49.00-63.00; 52 HEAD 62-65 LBS. 45.00-49.00.
GRADES 2 & 3: 20 HEAD 25-36 LBS 40.00-52.00.
NEXT GRADED SALE FRIDAY SEPT. 4, 1:30 P.M.

Belknap Livestock

Dayton, Pa.
Wednesday, Aug. 19, 1992
Report Supplied by Auction
FEEDER PIGS: 30-50 LBS. 30 HEAD 20.00-28.00.
MARKET HOGS: 230-260 LBS. 160 HEAD 44.00-45.80.
SOWS: 300-500 LBS. 6 HEAD 30.00-33.00.
BOARS: 300-500 LBS. 5 HEAD 28.00-30.00.
HOLSTEIN BULL CALVES: 95-115 LBS. 125 HEAD 100.00-125.00.
HOLSTEIN HEIFER CALVES: 90-110 LBS. 25 HEAD 160.00-190.00.
FEEDER CATTLE: 300-500 LBS. 24 HEAD 75.00-90.00.
BULLS: 1200-1600 LBS. 6 HEAD 58.00-64.00.
HEIFERS: 1100-1300 LBS. 12 HEAD 59.00-63.00.
STEERS: 1100-1300 LBS. 6 HEAD 62.00-65.00.
COWS: 1200-1500 LBS. 36 HEAD 47.00-56.00.

Diffenbach Auction Center

New Holland, Pa.
Monday, August 24, 1992
Report Supplied by Auction
TOTAL LOADS: 112.
ALFALFA: 42.00-165.00.
MIXED HAY: 62.00-160.00.
TIMOTHY: 78.00-200.00.
ORCHARD GRASS: 85.00-127.00.
STRAW: 60.00-125.00.
EAR CORN: 77.00-101.00.
OATS: 1.70.
RYE SEED: 3.75-4.25.
This sale was formerly held at the New Holland Sales Stables. It is now held at Diffenbach's New Holland Auction Center Ltd., 100 W. Jackson St., New Holland, across from the prior sale location. Auction time is 10:00 a.m. Monday.

Regional Hay

August 24, 1992
Eastern, Pa.
HAY & STRAW MARKET FOR EASTERN PA. - (ALL HAY NO. 2 AND BETTER, PRICES PAID BY DEALERS AT THE FARM & PER TON). HAY AND STRAW STEADY.
ALFALFA 75.00-100.00, FEW REPORTED 120; MIXED HAY 70.00-90.00, FEW REPORTED 120.00; TIMOTHY HAY 60.00-90.00, FEW REPORTED 120.00; STRAW 40.00-70.00, FEW REPORTED 90.00; MULCH 20.00-40.00.
SUMMARY OF LANCASTER CO. HAY AUCTIONS FOR WEEK ENDING 8/21/92. PRICES PER TON: LOADS: 121 HAY, 58 STRAW, & 62 EAR CORN.
ALFALFA 80.00-115.00; MIXED HAY 86.00-137.00; TIMOTHY HAY 94.00-138.00; STRAW 61.00-90.00; EAR CORN 77.00-98.00.
SUMMARY OF CENTRAL PA. HAY AUCTIONS FOR WEEK ENDING 8/21/92. PRICES PER TON: LOADS: 51 HAY, 12 STRAW & 22 EAR CORN.
ALFALFA 72.00-100.00; MIXED HAY 60.00-105.00; TIMOTHY HAY FEW REPORTED 50.00-75.00; STRAW FEW REPORTED 25.00-57.00; EAR CORN 75.00-95.00.

Belleville Hay

Wednesday, Aug. 26
Belleville, PA
Report Supplied by Auction
27 LOADS OF HAY.
ALFALFA: 60.00-127.50.
MIXED HAY: 60.00-100.00.
STRAW: 3 LOADS, 40.00-80.00.
EAR CORN: 1 LOAD, 102.50.
RYE: 3.00 BU.

Green Dragon Hay

Ephrata, Pa.
Friday, Aug. 21, 1992
Report Supplied by Auction
TOTAL LOADS: 57.
MIXED HAY: 97.00-142.00.
ALFALFA: 73.00-119.00.
TIMOTHY: 117.00-145.00.
STRAW: 55.00-104.00.
EAR CORN: 78.00-104.00.
OATS: 2.60 BU.
RYE: 3.20 BU.

Vintage Hay

Paradise, PA
Thurs., Aug. 27, 1992
Report Supplied by Auction
10 LOADS.
ALFALFA: 60.00-93.00.
MIXED HAY: 92.00-106.00.
STRAW: 69.00-100.00.

New Holland Feeder Pigs

New Holland, PA
Wed., Aug. 26, 1992
Report Supplied by Auction
TODAY: 733 HEAD
LAST WEDNESDAY: 1070 HEAD
LAST YEAR: 1364 HEAD
TREND: COMPARED TO LAST WEDNESDAY, FEEDER PIGS STEADY TO 10.00 LOWER, LEAST DECLINE ON US#1&2. ALL PIGS WEIGHED ON ARRIVAL AND SOLD BY THE HUNDRED WEIGHT.
US GRADES 1&2: 14 HEAD 38 LBS. 60.00; 126 HEAD 44-48 LBS. 54.00-68.00; 122 HEAD 50-59 LBS. 56.00-61.00; 8 HEAD 62-68 LBS. 56.00; 9 HEAD 79 LBS. 60.00.
US#2: 17 HEAD 27 LBS. 50.00; 29 HEAD 33-39 LBS. 52.00-53.00; 117 HEAD 43-46 LBS. 44.00-56.00; 76 HEAD 50-59 LBS. 47.00-56.00.
US#2&3: 27 HEAD 37-38 LBS. 39.00-40.00; 49 HEAD 40-49 LBS. 34.00-36.00.

New Holland Hog Auction

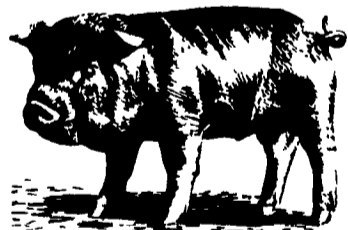
LANCASTER, PA
AUGUST 24, 1992
HOG RECEIPTS
TODAY 945
LAST MONDAY 731
LAST YEAR 1027
TREND: Compared to last Monday barrows and gilts 1.00-1.50 higher.
BARROWS AND GILTS: US 1-2 215-245 lb 47.50-48.75, Mainly 47.75-48.25.
US 1 215-240 lb 49.00-50.00.
US 1-3 215-250 lb 45.00-46.50, 200-210 lb 41.50-43.50.

Indiana Hogs

Louisville, Kentucky
Thursday, August 27, 1992
INDIANA DIRECT HOGS FLASH BARROWS AND GILTS: .25 TO MOSTLY .50 HIGHER. DEMAND MODERATE. PLANTS NOT FULLY TESTED. COUNTRY: PLANTS: US 1-2 230-260 LBS. 43.25-44.75, 43.00-44.00 FEW 45.00; FEW DOWN TO 43.00. 210-230 LBS. 39.75-42.00.
US 1-3 230-260 LBS. 41.75-43.50.
SOWS: STEADY.
US 1-3 300-650 LBS. 29.00-33.00, FEW TO 34.00.
TODAY'S PRELIMINARY ESTIMATE: 22,500.

Lancaster Hogs

Lancaster Stockyards
Sat., Aug. 22, 1992
Report supplied by auction
715 HEAD.
US 1 215-245 LBS. 49.00-50.00.
US 1-2 215-245 LBS. 48.00-49.00.
US 1-3 215-245 LBS. 47.00-48.00.
US 2-4 215-255 LBS. 45.00-47.00.
US 2-4 255-260 LBS. 44.00-48.75.
LIGHTWEIGHT HOGS: 195-210 LBS. 36.00-43.25; 180-195 LBS. 25.00-45.00; 120-180 LBS. 35.00-47.00; 80-120 LBS. 40.00-47.00; 50-80 LBS. 30.00-47.00; 30-50 LBS. 30.00-45.00.
GOOD SOWS: 33.00-36.00; MEDIUMS 30.00-33.00; THIN SOWS: 25.00-30.00.
HEAVY BOARS: 30.00-33.00; LIGHT JR. BOARS 35.00-37.00.



Leinbach's Hay

Shippensburg, PA
Aug. 22 and 25
Report Supplied by Auction
32 LOADS.
ALFALFA: 60.00-110.00.
TIMOTHY: 60.00.
MIXED HAY: 51.00-100.00.
CLOVER: 50.00.
BROME GRASS: 79.00-90.00.
ORCHARD GRASS: 40.00.
STRAW: 40.00-72.00.
EAR CORN: 75.00-87.00.

Westminster Hay

Westminster, Md.
Tuesday, Aug. 25, 1992
Report Supplied by Auction
TOTAL LOADS: 86.
ALFALFA: 110.00, .75-3.50 BALE.
TIMOTHY: 67.50, .80-2.70 BALE.
MIXED HAY: .50-2.30 BALE, 14.00 LARGE ROUND BALE.
ORCHARD GRASS: .50-1.70 BALE, 11.00-19.00 LARGE ROUND BALE.
CLOVER: 1.00-1.90 BALE.
STRAW: .50-1.60 BALE.
MULCH: 40 BALE.
LOCUST POSTS: .90 EACH.

North Jersey Market

Hackettstown, N.J.
Tuesday, Aug. 25, 1992
Hay—Straw & Grain Report
ALFALFA: 1.30 BALE.
MIXED HAY: .85-1.50 BALE.
GRASS HAY: 1.50-1.90 BALE.
OATS: 7.00 BAG.
STRAW: 1.30-1.50 BALE.
TOTAL LOADS: 13.

Dewart Hay

Dewart, PA.
Monday, Aug. 24, 1992
Report Supplied by Auction
14 LOADS HAY, 35.00-89.00.
CORN: 6 LOADS, 82.00-89.00.
OATS: 1.27 BU.

Good's Hay

Leola, Pa.
Wed., Aug. 26, 1992
Report Supplied by Auction
TOTAL LOADS: 92.
MIXED HAY: 60.00-133.00.
ALFALFA: 65.00-118.00.
STRAW: 49.00-89.00.
TIMOTHY: 69.00-140.00.
CORN: 69.00-96.00.
GRASS: 80.00.
CLOVER: 80.00.

Keister's Hay

Middleburg, PA
Aug. 25, 1992
Report supplied by auction
OATS: 3 LOADS, 1.85-2.00 BU.
RYE: 3 LOADS, 2.50-3.80 BU.

Mercer Livestock

Mercer, Pa.
Tuesday, Aug. 25, 1992
Report Supplied by Auction
CATTLE: 140. HIGH CHOICE & PRIME SLAUGHTER STEERS 73.75-75.25, 1 AT 76.10; CHOICE SLAUGHTER STEERS 72.00-74.50, SELECT STEERS 57.00-66.00, SELECT & CHOICE HOLSTEINS 59.00-64.00. SLAUGHTER HEIFERS CHOICE 68.50-71.60; SELECT 62.00-66.00.
COWS: BREAKING UTILITY & COMMERCIAL 44.00-49.00, CUTTER AND BONING UTILITY 45.50-53.25. CANNER AND LOW CUTTER 42.00-47.00, SHELLS LOW YIELD 26.00-35.75.
BULLOCKS: CHOICE 60.00-64.00, SELECT 57.50-62.75.
BULLS: YG#1 60.00-63.00.
CALVES, 65. GOOD 150-250 LBS. 70.00-84.00; STANDARD & GOOD 70-100 LBS. 40.00-70.00; HOLSTEIN BULLS 95-120 LBS. 120.00-135.00; #2 85-130 LBS. 100.00-115.00; HOLSTEIN HEIFERS 85-115 LBS. 1.40-1.85. TOP BEEF BULL AT 70 LBS. 90.00. TOP BEEF HEIFER 95 LBS 135.00.
HOGS: 140. BARROWS AND GILTS US#1-2 230-250 LBS. 42.75-43.85; US#1-3 225-240 LBS. 41.50-43.00.
SOWS US#1-3 350-550 LBS 31.00-38.00.
BOARS: 290-600 LBS. 25.00-31.00
FEEDER PIGS: 5 AT 17.00-25.00
LAMBS: 13 AT 70-120 LBS 52.00-65.00.

Walter M. Dunlap and Sons offers all cattle feeders two marketing days - Give us a call for advice and marketing conditions.

MONDAYS OR WEDNESDAYS

Consign With Us - For The Marketing Edge

Consign Your Beef Cows
Mondays and Wednesdays
No Waiting to Unload - Good Weight Conditions

Next Feeder Cattle Sale
Friday, September 4 - 11:00 A.M.

Walter M. Dunlap and Sons
Lancaster Stockyards
Tel. (717) 397-5136

An Old Line Commission Firm Keeping
Abreast With The Times



KIRKWOOD HAY AUCTION
Hay, Straw and Grain Auction
EVERY TUESDAY
11:00

Located Rt. 472 5 miles south of Quarryville or 6 miles north of Oxford corner of Rt. 472 and Noble Road.

Lloyd H. Kreider,
Auctioneer
AU-000513L
No out of state checks

In This Issue

Four Sections

COLUMNS

Now is the Time.....A10
Have You Heard.....B 5
On Being A Farm Wife.....B 4
Microwave Magic.....B 7
Ida's Notebook.....B13
Poultry Pointers.....C 4
Swine Management News.....D 4
Fair Days.....D 4

DEPARTMENTS

Editorial.....A10
Farm Calendar.....A10
Mailbox Markets.....B22
Public Auction Register.....B29
Business News.....C 6
Classified Ads.....C10, D 5

DAIRY

Central Champion.....A18
Southeast 4-H Dairy Show.....A20
South Central 4-H Show.....A24
Southeast Pa. Holstein Show.....A38
Chester Co. DHIA.....D 2

FEATURES

Purina Farm Tour.....A26
E-Town Swine Show.....A28
Cumberland Co. 4-H Show.....A29
Bedford Show.....A36
Ice Cream at Ag Progress.....B14
Food Trends at Ag Progress.....B16
Outstanding 4-H'er.....B18
Zelger Explores Texas.....B19
Cumberland 4-H Expo.....B20
Bedford Livestock Sale.....C 3
Franklin Holsteins.....C 7

HOME AND YOUTH

Homestead Notes.....B 2
Home On The Range.....B 6
Cook's Question Corner.....B 8
Kid's Korner.....B10
Farm Women.....B13
4-H Happenings.....B17