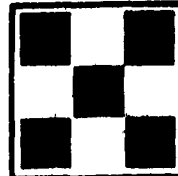


HARVEY AND LOIS OCKER

Franklin County



Harvey and Lois Ocker started milking cows over 27 years ago when they moved to a Franklin County farm located just outside of Greencastle, PA. Since that time they have gone from 18 to 65 cows and also seen their family grow by 10 children as well.

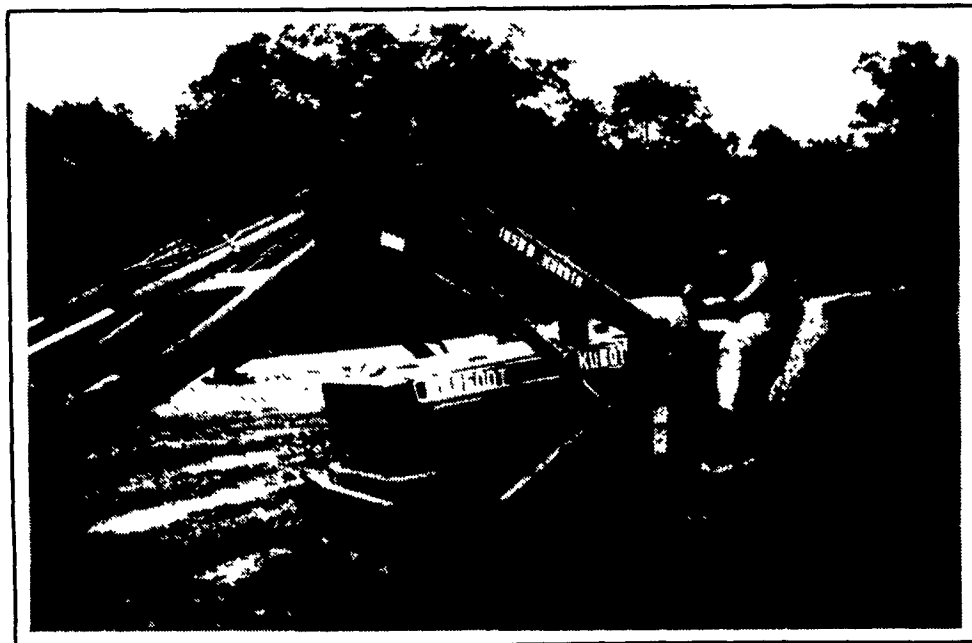
They currently farm about 285 acres and feed their cows corn silage and hay in the fall and winter. In the spring and summer they feed the cows hay and grass silage. All grain is top dressed in the barn at milking time according to milk production at a 3 to 1 milk to grain ratio.



Harvey Ocker going over his DHIA records with his son and Purina Farm Consultant Cliff Ocker.

Harvey started hearing about increased milk production stories from his son Cliff last July when his son started working at Detrich Elevator, a local Purina Dealership. In October of 1991 Harvey decided to try the Purina Program and listed below are some results he has seen since starting on Purina Test Cow and Maxi-Tech Complete feeds:

# Cows	Milk RHA	% Fat	Lbs. Fat	% Protein	Lbs. Protein	% 1st Calf Heifers	Date
68.9	17,011	3.6	620	3.2	537	25	9-91
63.7	19,266	3.5	671	3.0	582	42	7-92



Harvey's son Orville dumping silage in the feeder

Here are some comments that Harvey had to share about what he has seen on the Purina Program:

- "As soon as I switched to Purina my cows started coming up in milk."
- "Grain consumption is good with the palatable high energy Test Cow and Maxi-Tech feeds."
- "Even with the extra milk I've been able to maintain my herd health."

Purina Mills and Detrich Elevator thank the Ocker's for their business and wish them continued success in the future.

Contact Your Purina Dealer Today

WARRIOR'S MARK FEED CENTER
P.O. Box #130
Warriors Mark, PA 16877
814/632-5490

FARMER'S UNION CO-OP
30 East Walters Avenue
Greencastle, PA 17225
717/597-3191

K & K FEED, INC.
23 N. Park Street
Richland, PA 17087
717/866-2324

THE OXFORD GRAIN & HAY CO.
1212 Railroad Ave.
Oxford, PA 19363
215/932-8521

BEDFORD FARM BUREAU
Bedford PA 814/623-6194
Everett, PA 814/652-2313
New Enterprise, PA 814/766-3328

FARM CREST FEEDS
Lititz, PA 17543
717-626-0331
800-432-3040

ANTHONY'S FEED MILL
P.O. Box 212
Strausstown, PA 19559
215/488-6211

HESS MILLS

Paradise, PA 17562
717/442-4183
717/768-3301

Unionville, PA 19375
215/347-2377

UMBERGER'S MILL
R.D. #4 - Box #545
Lebanon, PA 17042
717/867-5161

GLENVILLE FARM CENTER
Glenville, PA 17329
717/235-1290

FRANKLIN FEED & SUPPLY
1977 Philadelphia Ave.
Chambersburg, PA
717/264-8148
5960 Altenwald Rd.
Waynesboro, PA

DETRICH ELEVATOR, INC.
5458 Cedar St.
Williamson, PA 17270
717/369-3724

WILLIAM GOWER & SON
Rt 1, Box 50
Williamsport, MD 21795
701/582-2818

CHECK-R-BOARD

239 W. Main St.
Knoxville, PA 16928
814/326-4178

HIGH BROTHERS
441 Centerville Road
Gordonville, PA 17529
717/354-0301

H.C. SUMMERS, INC.
4002 Jefferson Pike
Jefferson, MD
301/473-8300

M.G. HENNINGER & SON, INC.
Berrysburg, PA 17005
717/362-3333

WOODSTOWN ICE & COAL CO., INC.
50 East Grant Street
Woodstown, NJ 08098
609/769-0069

OLEY VALLEY FEED
RD2 - Box 271A
Oley, PA
215/987-3568

MARTIN'S FEED & FERTILIZER, INC.
Coburn, PA 16832
814/349-8787

SPENCER'S MILLING SERVICE
306 S. Rodney St.
Clayton, DE 19938
302/653-8011

NISSLEY FEED CENTER
Mill Rd., Box 377
Morgantown, PA 19543
215/286-9029

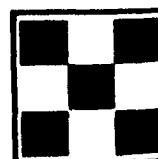
TRI COUNTY AG CENTER, INC.
McVeytown, PA 17051
717/899-6772

R D BOWMAN & SONS, INC.
Englar Rd
Westminster, MD 21157
301/848-3733

NORTH GLADE FEED & SUPPLY, INC.
12435-A Woodboro Pike
Keymar, MD 21757
301/898-3414

WELLCO FEED
RR 2, Box 1-A
Wyalusing, PA 18853

PURINA MILLS, INC.



* Trademark of Ralston Purina Company

Feeds designed with you in mind.