

Public Auction Register

Closing Date Monday 5:00 P.M.
of each week's publication

PUBLIC AUCTION

VALUABLE 12 ACRE
FARMETTE & FARM
EQUIPMENT

MON., AUG. 31, 1992
AT 5:30 P.M.

Located at 2607 Elizabethtown Rd., 3 miles east of Elizabethtown, Pa. Mt. Joy Twp., Lancaster Co.

Real Estate consists of a 12 acre M/L farmette zoned agriculture. 7 acres of farmland balance in pasture (w)stream.

Thereon erected a 2 1/2 story brick house. First floor consists of lg. eat in kitchen, spacious family room with open stairway, dining room & living room and laundry. First floor has hardware flooring. Second floor has 3 bedrooms, sewing room & tile bath. New storm windows. Oil fired hot water heat. Concrete basement.

50'x35' frame bank barn (w)20'x20' attachment and a 30'x30' block attachment.

Also a 4 bay concrete block garage and shop area.

These buildings are in excellent state of repair.

Looking for a small farm this is your opportunity. Don't miss this auction.

Terms: 10% down balance 45 days.

Persons wishing to inspect property may do so at Open House, Sat. Aug. 1 & Aug. 15 from 1 to 3 p.m. or by calling 367-3853.

Real Estate will be offered at 6 p.m. Watch for farm equip. listing at a later date.

SALE BY JOHN S. & ELLA GIBBLE

Aucts. AU617L
Raymond Miller & Jim Hershey
Attorney - Young & Young

THUR. AUG. 27 - 5PM,
Power & Hand Tools, Furniture, Books, Car. Located At 1012 Pleasant View Road, Ephrata, Lancaster County, Pa. (Directions: Main St. In Ephrata, Turn North Onto Academy Dr., Left Onto Pleasant View Road). Terms By, Thomas W. Good & Virginia Good. Horst Aucts.

THUR. AUG. 27 - 7PM,
Real Estate Auction. Located 237 Water St., Pic-

ture Rocks, Pa. From Hughesville Take Rt. 220 North 3 Miles To The Village Of Picture Rocks (Lycoming Co.). Owners, Phillip & Virginia Bitler. George Kapp, Jr., CAL, & Gale L. Derr, Aucts.

THURS. AUG. 27 - 7:30PM
Evening Dairy Sale. At Kling's Sale Barn, located 15 miles North of Carlisle, on Route 74, 2 miles Northeast of Landisburg, Pa. Managed by Kling's Auc-

tions, Inc.

FRI. AUG. 28 - Special heifer sales at Shady Lane Dairy Sales, Inc., 23 Shady Lane, PO Box 673, Quarryville, Pa. 1/4 Mile West of Quarryville. Glen D., David L. Fite, managers.

FRI. AUG. 28, State Graded Feeder Pig Sale at Carlisle Livestock Market, Inc., Exit 12 East off I-81, Carlisle, PA.

FRI. AUG. 28 & SAT. AUG. 29 - 9AM, Real Estate, Antiques, Collectibles.

Lancaster Farming,, Saturday, August 15, 1992-F27

Located At The Stonington Fire Hall Due To Lack Of Space And Parking. From Sunbury, PA. Follow Route 61 South 6 Miles To Hall. From Shamokin, 10 Miles North On Route 61. (Northumberland County). Co-Executors: Kenneth R. Troutman, Samuel C. Deitrick, Jeffery Apfelbaum, Mark J. Jones, Auctioneering Service.

FRI. AUG. 28 - 10AM, 1st Of 2 Annual Fall Heifer

Sales, 800 Head Of Reg. & Grade Holsteins. Located At Shady Lane Dairy Sales Inc., 1/4 Mile West Of Quarryville, Pa. Off Rt. 372 Onto Oak Bottom Road. Sale Managed By, Shady Lane Dairy Sales, Inc. Glenn D. Fite & David L. Fite, Aucts.

FRI. AUG. 28 - 7PM Lebanon County Holstein Club. Located At Lebanon Area Fairgrounds, Lebanon, Pa. Harry H. Bachman, Auct.

PUBLIC AUCTION REAL ESTATE

125+ ACRE FARM

SAT., SEPT. 26, 1992
@ 11:00 A.M.

310 Prospect Road, Elizabethtown From E'town Square take E. High St., continue approx. 3 miles on Elizabethtown Rd. to Prospect Rd.; turn left and continue to second farm on left.

IMPROVEMENTS INCLUDE 2 1/2 sty. frame dwelling containing 10 rooms (including 2 kitchens, 2 baths and 2 stairways) and attached laundry; full concrete basement and attic; baseboard hot water heat; insulation blown in exterior walls & attic floor; formerly used as 2-unit dwelling.

Lg. bank barn w/3 drive floors & 2 side mows; attached block daily barn, 50 tie stalls w/barn cleaner, loose housing area; milk house; 625 gal. Jamesway bulk tank, 2" SS Surge pipeline, 5 milking units; 16'x60' concrete stave silo w/unloader; corn barn; tobacco barn w/dampening cellar; 1 sty. stone & frame bldg. 16'x94', 3 car garage, farm pond.

Approx. 90 acres tillable, balance at time of settlement on or before March 1, 1993. Conditions of sale to be given day of sale by attorney. For appointment to inspect property call (717) 367-4388 or (717) 367-3917.

Sale for

AMOS & MARIAN ZUCK

Atty: Shirk, Relst, Wagenseller
Aucts: Long & Long (AU-555-L)
(717) 367-3917

PUBLIC AUCTION

20 ACRE

SCHUYLKILL COUNTY FARMETTE

THURSDAY, AUGUST 27, 1992

Located approx. 10 minutes from I-78 along Hickory Drive on Sculps Hill, West Brunswick Twp., Schuylkill Co., PA. Traveling North on Rt. 61, at Deer Lake turn West onto Rt. 895 travel approx. 2 miles, turn right onto Hickory Drive for approx. 2 miles to farm.

Real Estate consists of 20+ acres, whereon is erected an early 2 1/2 story completely remodeled brick home with 9 rooms, 2 full baths, a new spacious 14' x 21' kitchen w/cherry wood cabinetry, corian counters, open beams & skylights, wrap around porch, wood/coal furnace and oil hot water heating. Detached is a 2 story wood framed & stone extra living unit or office quarters w/4 rooms w/cathedral ceilings and full bath heated by coal stoker & elec. baseboard w/3-bay garage & workshop on ground level, 2 story banked barn w/3 fenced-in spring fed pastures & small started orchard, deluxe country living with a 16' x 32' in-ground pool w/brick patio, blacktop driveway w/stone walls, leveled area for horse arena or tennis court, beautifully landscaped. View this property to appreciate its value. Inspection by appointment, call (717) 366-1465 or (717) 366-1560. Terms are \$35,000 down payment the day of auction, balance in 60 days. Real Estate will be offered at 7:00 P.M.

Auction For:

LON & DIANE SEITZ

Auctioneers:
Dennis F. Wagner
AU-001427-L

Phone: (215) 562-7445



PUBLIC SALE

REAL ESTATE
APPROX. 19 ACRES

JOHN DEERE H TRACTOR
RIDING MOWERS, TOOLS, ETC.

Saturday, August 22, 1992

9:00 A.M.

LOCATED ON RUGBY ROAD, IN THE VILLAGE OF STONETOWN, EXETER TOWNSHIP, BERKS COUNTY, PA. (Turn off Route 422 at Shellbourne Square onto Shellbourne Road to Rugby Road). Watch for sale arrows.

REAL ESTATE AT 1:00 P.M.

TRACT NO. ONE - 1.7 ACRES

with 1 1/2-STORY FRAME SHINGLED DWELLING

FIRST FLOOR CONTAINS KITCHEN, LIVING ROOM, DINING ROOM, BEDROOM, FULL BATH and STORAGE AREA. SECOND FLOOR CONTAINS THREE ROOMS, CEMENT BASEMENT. LATE MODEL GAS HOT AIR HEATING SYSTEM. MILK HOUSE. SMOKE HOUSE. WELL WATER.

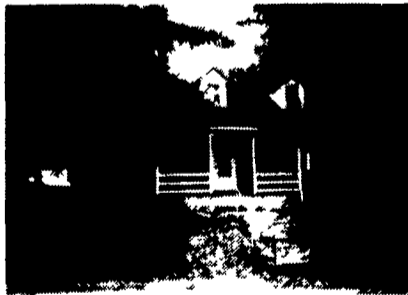
TRACT NO. TWO

CONTAINS APPROX. 18 1/2 ACRES

WITH BARN and CHICKEN HOUSE (AS IS)

NOTE: TRACT NO. ONE and TRACT NO. TWO WILL BE OFFERED SEPARATELY AND AS A WHOLE.

For inspection or information on Real Estate call (215) 779-3979.



JOHN DEERE H TRACTOR

(with PLOW & CULTIVATOR)

CUB CADET HYDRO 1610 RIDING MOWER

(LIKE NEW)

JOHN DEERE 7 H. P. RIDING MOWER

Manure Spreader, Disc, Hay Rake, Rubber Tire Grass Mower, Rubber Tire Trailer, One-Horse Cultivator, WOODEN & ALUMINUM EXTENSION LADDERS, Step Ladder, Rubber Tire Wheelbarrow, SMALL AIR COMPRESSOR, Shop Vac, ROTARY POWER LAWN MOWERS, Lawn Roller, Forge, Sleds

2 KITCHEN RANGE STOVES

COCA COLA COOLER CABINET

PORCELAIN TOP BREAKFAST TABLE & CHAIRS, Poker Table, Roll-away Bed, Benches, Church Pew, Lawn Chairs, SAUSAGE PRESS, IRON BUTCHER LADLES & FORKS, Hog Scrapers, Hanging Scale, Cast Iron Griddle, OLD READING BEER ADVERTISING SIGN, COCA COLA ADVERTISING FRAME, CARPENTER'S TOOL CHESTS, Tire Ramps ELECTRIC DRILL, CIRCULAR SAW, 11 HAND SAWS, Lanterns, Wrenches, Hammers, Pliers, Hatchets, Drill Bits, Shovels, Rakes, Hoes, Pitch Forks, Axes, FISHING RODS & REELS, TACKLE BOX, SINKER MOLDS and loads of other items too numerous to mention.

SALE TO COMMENCE AT 9:00 A.M. SHARP!

HUCKABEE & WEILER, Attorneys

Not Responsible for Accidents

Refreshments will be sold.

Terms by

Paul S. Gechter Estate

DALE L. PUTT, Auctioneer

AU-000733-L

PHONE AKRON (717) 858-1430

PUBLIC AUCTION

FRIDAY, SEPT. 25 AT 11 AM

REAL ESTATE - COMMERCIAL/RESIDENTIAL

6 ACRES, DUAL RESIDENCE AND

SATURDAY, SEPT. 26 AT 9 AM

TRUCKS & TRAILERS - CONSTRUCTION EQUIPMENT

SHOP EQUIP * TOOLS * PARTS

Located just off Fleetwood-Blandon Road, Berks Co, Pa. midway between Fleetwood and Walnuttown, Pa., off US Rt. 222.

Real estate consists of ± 6 secluded acres whereon is erected a one story 200 sq. ft. frame & alum. sided home w/lg. eat in kitchen/din. area, lg. LR, 3 bedrms, 2 baths, utility rm, garage & bsmnt, w/adj. 30'x60' truck bay w/20' ceil & 12'x60' shop/storage area, also located on site is a 12'x60' mobile home w/add on BR and attach. garage; both w/separate water, sewer & elect. services, open house inspection Aug. 23 & Sept. 20 2 to 4 p.m.

SAT., SEPT. 26:

Trucks, trailers & heavy equip. includes: 1990 JD S55G track loader w/clam shell bucket; 1988 580K Case extend-a-hoe; 1988 Scandia tri-axle dump truck; 1980 Freightliner tandem trailer, Cummins pwr, 8 spd., wet line; 1984 GMC tri-axle dump truck, Cummins pwr, 8 spd; 1988 Interstate 9 ton long deck trailer, 1971 Rogers detachable Low Boy w/self contained pwr; 1977 dual wheel p.u. w/utility box; 1975 Chevy p.u., 4x4 w/ angle snow plow; 1965 Jeep p.u. w/snow plow; 1955 Oliver tractor (live hydal.) 1950 Chevrolet; 1940 Chev. dump truck; York rake w/3 pt. hitch

SHOP EQUIP., TOOLS & PARTS:

Karcher HDS1150 steam cleaner, air greaser & gear oiler, gasoline pumps; gates hydraulic hose crimper, cut-off wheels & fittings; parts washer, Cummins 5 spd. drill press, bench grinders, vises, chain saws, 10 ton porta-bar, Milwaukee recip. saw, air ratchets, floor & bottle jacks, Walker concrete saw, 5 HP water pump, jack stands, 8 HP B&S 6KW gen, Hobart model T-300 (300A) elect. welder, 4 cyl. Wisconsin gas pwr. air compressor, Wayne 2 HP & Par 4 HP air compressors, lighted barricades, wheels; bias-radial-flotation tires, 4 wheel drive Chevy trans. & rear parts, 1973-78 Chevy truck fenders (new), 2& 4 barrel Chevy carbs & manifolds, Blazer running brds., reefer parts, drip gutters, mirrors, oil & air filters, gaskets, seals, lens, gauges, fan belts, shocks, motor mounts, brakes, heavy equip. sockets & wrenches, Husky, Craftsman & Snap-on tools, torch regulator & gauges, shelving, storage drawers, fitting, nuts, bolts, chain hoist, sch. 40 PVC pipe, rebar. Most everything you need for maintaining & servicing trucks & heavy equip.

TERMS: Real estate: 10% down cash or Pa. approved check day of auction, balance at settlement on or before Dec. 1, 1992. Trucks, equip. & tools: cash or Pa. approved check day of auction.

NOTE: Out of state and new buyers unfamiliar to the auctioneer must have bank letter of credit specifically referenced for this auction.

KEN HEFFNER AU-002858-L
Auctioneer (215) 944-7249