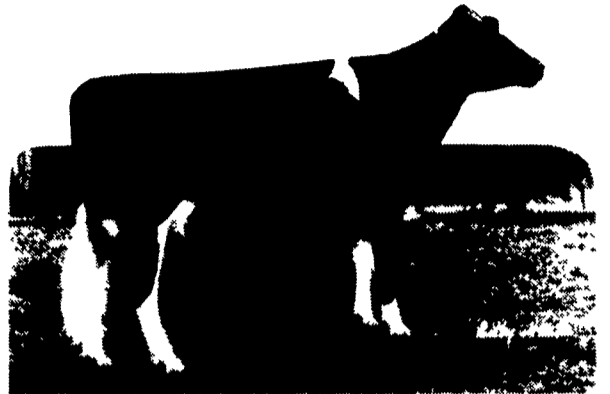


Mascot and Leadman ... continuing their prominence in the breed

They've set high standards in genetic leadership:



8H2085
Singing-Brook N-B
MASCOT
-ET
VG & GM



+\$225 MFP +2,132M +71P +54F
57D/51H 81%R +1.98 PTAT



↑ **Indianvale Mascot Missy**
-VG
2-3y 365d-2X
20,674M 814F 696P
O: Delaware Valley College,
Bucks Co.

← **Hepler Homestead**
Mascot Molly-Gr
2-0y 305d-2X
17,441M 603F 585P
3-2y 305d-proj.
20,085M 741F 696P
O: James Hepler, Schuylkill Co.



8H2024
Rothrock
Tradition
LEADMAN
EX & GM



↑ **Spring-Haven Leads-**
man Clara-VG
2-2y 365d-2X
21,852M 927F 763P
3-7y 365d-2X
29,960M 1,071F 1,036P
O: Cormdale Farms 2000,
Ontario, Canada

← **Drovers Inn Pepita-VG**
2-8y 343d-2X
21,281M 749F 680P
3-9y 365d-2X
24,800M 912F 809P
O: Dean & Melinda Johnson,
Warren Co.

+\$214 MFP +1,731M +67P +62F
77D/64H 87%R +1.82 PTAT

(July/92 USDA production & HA type data)

Their prominence in your breeding program will provide outstanding milk and protein production, topped off with nicely-framed, good-uddered cows on super feet. Call your Atlantic rep today!



24-hour toll-free service phones:
Long Distance 800/444-6456 Lancaster Local 569-0411

Authorized distributor for 21st Century Genetics in Atlantic's service area

PARTNER IN **FEDERATED** GENETICS

