

## DEPENDABLE MOTOR CO.

East Main St., Honey Brook, PA  
215/273-3131 or 215/273-3737

NH 279 Cutditcher	Ford 532 Baler
NH 680 Manure Spreader	NH 310 Baler
NH 790 Manure Spreader	NH 30 Forage Blower
NH 791 Manure Spreader	Pequea Tedder
Grimm Tedder- New Demo	NH 70 Thrower
(1) NH 489 Hayblines	NH 770 Pick-Up Head
NH S676 Spreader	NH 8 Forage Box

WE REBUILD  
489 WOBBLER BOXES



DEALER FOR  
Roskamp

### Excellent Ford Tractors

9700, cab, air, DP, 2,470 original hrs.  
TW-10, cab, air, DP, 20.8x38 radial tires, 4,500 hrs.  
7710 II, 4WD, cab, air, DP, syncro, 375 hrs.  
7710 II, 4WD, cab, air, DP, weights, 450 hrs.  
7710 II, cab & air **SOLD** model, 900 hrs.  
6600, DP, 18.4x34, 2,700 orig. hrs.  
5610, 1983, DP, 18.4x30, 1,250 orig. hrs, 1 owner.  
4610 II, 1986 w/Allied 594 QT loader, 275 hrs.  
4610, 8 spd., 13.6x38, 1 hyd., 2,300 hrs., 1 owner  
3910 II, 1987, roll bar, 250 orig. hrs.  
3910, 1984, 14.9x28, 690 hrs., 1 owner

#### Equipment

FNH 311 Baler w/#75 ejector, like new  
FNH 489 haybine w/hyd. tongue, excellent  
H&S steel hay wagon, 8x18 w/Pequea gear, exc.  
NH 354 grinder mixer (hammers never turned)  
FNH 900W hay head, like new  
NH 520 spreader, hyd. drive web, top beater & pan  
JD 8250 grain drill, 18x7, excellent  
IH 5100 grain drill, 16x7 w/fert. & grass, exc.  
McCurdy 190 bin wagon w/flotation tires, like new  
Hay elevator 36', Mfg. by Hub (same as NH)  
FNH 824 2 row corn head, excellent  
All Tractors Tested On Our Farms.  
— Please Call Before Coming —

### Burkholder Bros.

Lebanon, PA  
717-272-2352 717-949-2123

### USED TRACTORS

"Will buy or trade tractors"

JD 4850, 4WD, PS, SGB, Wts.....	\$43,500
JD 4240, SGB, QR Trans., 1982, sharp	\$18,500
JD 2940 SGB, 2 hyd. hi/lo, original.....	\$17,200
JD 4040 SGB, QR, Trans, 2 Hyd. ....	\$16,500
JD 2555 dsl., Ind. PTO, roll bar & roof	\$13,900
JD 2940 4 WD, New Tires, 3200 hrs....	\$13,400
JD 4430 SGB QR, trans .....	\$12,600
JD 2750, hi/lo Ind. PTO, Nice.....	\$11,800
JD 2940, hi/lo, 2 hyd, nice original.....	\$11,800
JD 4230 w/ansel cab QR, new tires.....	\$10,800
JD 1640 SGB, Same as 2350 .....	\$10,500
JD 4430 4 post creeper trans. orig., nice.....	\$9,800
JD 2840, 2 hyd. hi/lo, original.....	\$9,700
JD 4230, fender tractor creeper trans....	\$9,300
JD 2840 diesel, 2100 hrs., original.....	\$9,100
JD 4000, 1972, WF, Good Rubber, Nice	\$9,000
JD 4020 side console, overhauled, nice	\$8,900
JD 4020 side console, WF, original.....	\$8,500
JD 2520 diesel WF, overhauled.....	\$7,600
JD 3130 same as 2840 late model.....	\$7,400
JD 4020, WF, diesel, nice.....	\$7,200
JD 2130 hi/lo Ind. PTO, late model.....	\$6,700
JD 4010 Diesel, WF, 38" rubber.....	\$6,200
JD 125 dsl. skid loader, 2100 hrs.....	\$6,200
JD 2030 diesel, ind. PTO, nice.....	\$5,500
JD 2010 dsl., NF, nice condition.....	\$3,000
JD 2010 gas, NF, original, 2640 hrs.....	\$2,700
Ford 8N super clean good tires.....	\$2,600
Ford 9N w/Sauder ldr., nice.....	\$2,250
IH 450, diesel, good TA pulley.....	\$2,000
IH B414 diesel, <b>SOLD</b> w paint.....	\$1,600
JD 24T baler w/ejector.....	\$1,450
NH 479 haybine, fair condition.....	\$1,400
JD 4020 Wide front ends, brand new....	\$1,300
M&W Turbo Kit For JD 2630.....	\$800
JD KBA 12' disc harrow.....	\$800
M&W Turbo kit for JD 3020.....	\$700
JD 34" axle duals f/4020 or 4230.....	\$600
MF 3 pt. 7' mower.....	\$450
JD 4020 or 3020 toplinks brand new	\$175 ea.

Zimmerman Elevators, Hay Tedders  
Wagon Gears & Forage Wagons  
Farmco Metal Feeder Wagons, Bale  
Bodies & Country Boy Gravity Bins  
JD Front & Rear Weights J&L Hay Savers

### Reiff Farm Service

275 Goodhart Road, Shippensburg, PA 17257  
Interstate 81 Exit 10 174 East, Goodhart Road R  
(717) 532-8601 Can Finance

### ATTENTION FARMERS

If you have deteriorating concrete masonry or stone walls, have it repaired with **GUNITE®**

For information and estimates call  
**Martins Silo Repair**  
(215) 445-9834

Cat D8L .....	\$120,000
Cat D8N .....	\$145,000
Komatsu 973.....	\$75,000
Komatsu D58P-1 .....	\$70,000
Komatsu D155-S .....	\$110,000
Komatsu PC220LC-3.....	\$70,000
2 Komatsu HA 270-1's ..	\$95,000 Ea.

All Excellent Condition  
215-367-7494

## FORKLIFTS

2,000 to 15,000 Lb.  
**\$1,000 to \$12,000**  
Gas/LP-Diesel-Electric  
Cushion-Pneumatic-Rough Terrain

Call Mike  
**PA INDUSTRIAL EQUIPMENT**  
(215) 326-7090

Asplund 16" Brush Chipper,  
6 Cyl., Ford Gas  
1979 Eager Beaver 15 Ton, Tag  
Along Trailer..... \$5,995  
Layton Drag Box Paver..... \$2,695  
1980 IH Dump Truck 35,000 GVW,  
Air Brakes, Gas, V8, 5+2  
Trans..... \$6,000  
4-6 Ton Gallon Rollers.. \$3,500 & Up  
1 Ton Eager Beaver Roller With  
Trailer..... \$4,295

### Mark Supply Company

For All Your Municipal Equipment and Supplies  
P.O. Box 52 C. Mark Miller  
Saxton, PA 16678 (814) 658-3066

### 1a CONSTRUCTION EQUIPMENT

D-7 Cat, hyd blade, under-carriage 70%, \$9,000  
(717)382-4878.

DISMANTLING FOR PARTS. Heavy construction equipment, most makes and models, parts locator service available.  
Balanda Equipment Co  
Palm, PA 18070  
1-800-322-8030.

FORKLIFT CASE 430, gas, excellent, \$3,500  
410-833-9091

General 15 ton tag trailer, 3 axle, electric brakes, deck size: 17'8", 5' Beavertail, 38,400 GVWR, Oak deck, good condition, \$2200. Call Steve. Groff Tractor. 1-800-334-7633.

HIGHWAY MOWER Flail, rear mount, 15' reach, \$1,500. 410-833-9091

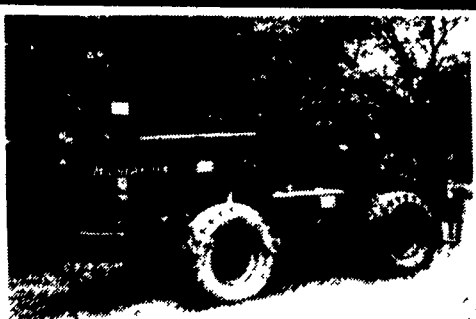
Jaeger 85CF Compressor \$750; (2) IR 85CF Compressors \$750; General 1 1/2 Ton Roller \$1900; 86 Case 4X4 Ext-Hoe Cab \$23,900; 83 TD550 6-Way Dozer \$18,900; 74 IH 100C Loader \$7500  
609-466-2953.

Seaman Pulv-mixer, used to scarify roads, \$6,500.  
(609)894-2849.

SKID STEER LOADER  
KOEHRING 2150, 60 h.p. 6 cyl. diesel, 1,500 hrs.  
\$8,500 410-833-9091

WANT TO BUY all makes and models of construction equipment.  
(301) 694-6148,  
(301)371-9299 fax.

WHEEL LOADER  
SWINGER 100, gas,  
\$4,000. 410-833-9091



**1984 844 Lull**  
Very Good Condition,  
Completely Reconditioned  
Last 6 Mo.  
**\$33,000 Best Offer**  
**(301) 601-9412**

### FOR NEW AND USED CONSTRUCTION EQUIPMENT PARTS AND ATTACHMENTS

CALL  
**H.E.L.P., INC.**  
**1-800-446-0505**

Specializing in Caterpillar  
Parts also available for Case, John Deere, IHC, Fiat, Etc.  
National Locator Service Available

### HEAVY EQUIPMENT LOADER PARTS, INC.

R.D. #2 Box 2230 Route 22  
Grantville, PA 17028

### Heavy Equipment Loader Parts, Inc.

#### CONSTRUCTION EQUIPMENT SALES

Rt. 22, RD 2, Box 2230,  
Grantville, PA 17028  
717-469-0691 1-800-252-0228  
717-469-0039 1-800-446-0505



**Caterpillar D3 Crawler Dozer**  
PAT Blade, New Steering Clutches  
Job Ready  
**\$10,000.00**

## C.S. COLEMAN

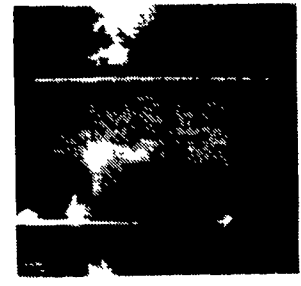
Phone: (717) 692-4444 R.D. #1 Box 371  
Phone: (717) 692-4910 Millersburg,  
Fax: (717) 692-4074 PA 17061



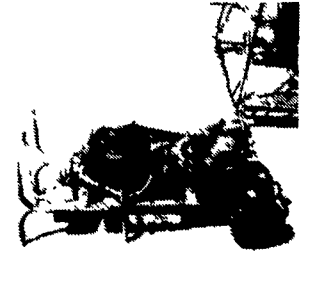
Pallet Racking & Shelving



955 K Cat/Loader



60 & 100 KW Gen. Sets



Portable Air Compressors

#### INDUSTRIAL ITEMS

Portable Welder.....	\$1250
Portable Air Comp.....	\$295
Parts Washers .....	\$125
Water & Trash Pumps.....	Call
10 Ton Floor Jacks.....	\$395
Truck Trans. Jack.....	\$500
10 HP Elec. Mtrs. ....	\$75
6 Ft. Metal Brake.....	\$1,800
Southbend Lathe.....	\$1,800
Machine, Tooling-Chucks, Etc.	
Manual Chain Hoist.....	\$200
Steel Cable- Many Sizes	
1250 Gal. SS Tanks.....	\$1,250
H.D. Steam Cleaners.....	\$1,250

#### WHEELS

All Purpose Forklift (RT)  
86 F-350 Stake Dump  
83 C-30 High Cube Van  
910 Cat Rubber Tire Loader  
955K Cat Crawler Loader  
45' Closed Van Trailer  
Dodge Military 4x4  
1984 F-150 4x4 Loaded  
1980 F700 C&C 5 Spd.  
1983 Dodge w/Van Body  
85 F-350 Stake Dump  
85 Camaro Berlinda CP  
Small Gov't Utility Trailers  
Other Trailers Avail.

#### MISCELLANEOUS!!

Medical Storage Cabinets (SS)  
Deep Freezer & Cold Food Table  
3" & 4" Alum. & Stainless  
Valves w/Couplers  
9 ft. x 12 ft. Walk In Cooler Unit  
15KW - 60 KW & 100KW Gen. Sets  
Wood Hog - Montgomery - NICE  
Alum.-Stainless & Steel Sheeting  
150 Used File Cabinets In Stock  
Bar Grating & Decking (Steel)  
New 353 Crank Shafts &  
Connecting Rods  
Pallet Racking & Shelving-  
All Types  
If You Need It, We Can Find It,  
Please Call With Your Needs