



# CARTER

## Lumber

- QUALITY MERCHANDISE
- SELECTION • SERVICE
- GUARANTEED SATISFACTION



# CARTER POLE BUILDINGS



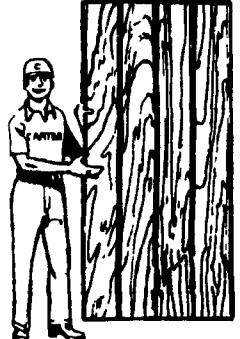
**CONSTRUCTION** • Pressure treated posts & skirt boards • 2x4 Premium grade girts & purlins • Prefabricated clear span trusses 4' On Center • Sliding doors w/National hardware • 3°6' Prehung door • Also includes all nails, hardware, trim, plans and instructions • 29 Gauge Fabral Painted Steel Siding

3 ROOFING OPTIONS

	29 GA Plain Steel	29 GA Painted Steel	.0155 Plain Aluminum
30' x 32'-10'	\$3,449	\$3,705	\$3,695
30' x 40'-10'	\$4,250	\$4,450	\$4,395
30' x 48'-10'	\$5,175	\$5,395	\$5,325
32' x 40'-12'	\$4,695	\$4,895	\$4,750
32' x 48'-12'	\$5,595	\$5,795	\$5,650
32' x 56'-12'	\$6,125	\$6,395	\$6,225
32' x 64'-12'	\$6,935	\$7,195	\$7,025

3 ROOFING OPTIONS

	29 GA Plain Steel	29 GA Painted Steel	.0155 Plain Aluminum
40' x 48'-12'	\$ 6,295	\$ 6,695	\$ 6,495
40' x 56'-12'	\$ 7,095	\$ 7,295	\$ 7,125
40' x 64'-12'	\$ 8,175	\$ 8,350	\$ 8,235
40' x 72'-12'	\$ 9,150	\$ 9,395	\$ 9,195
56' x 64'-14'	\$10,995	\$11,625	\$11,250
56' x 80'-14'	\$13,385	\$13,625	\$13,425
56' x 88'-14'	\$14,735	\$15,095	\$14,895



**ROUGH SAWN SIDING**  
5/8" x 4' x 8' PLYWOOD  
T-111 GROOVED 8" and 4" O.C.  
**\$14.99**

**METAL ROOFING & SIDING**  
Ask For Low Prices On Roof Trusses

**SPECIAL GRAND RIB 3 PAINTED STEEL**  
29 Gauge  
**\$49.50**  
Reg. \$53.00 100 Sq. Ft.  
36" Net Coverage

**STRONG RIB ALUMINUM**  
100 SQ FT 36 NET COVERAGE  
**\$41.00**

**GRAND RIB 3 GALVANIZED 29 GAUGE**  
100 SQ FT 36 NET COVERAGE  
**\$38.00**

**1 1/2" CORRUGATED GALVANIZED STANDARD**  
100 SQ. FT. Net In Stock  
**\$40.50**

CUSTOM LENGTHS AVAILABLE  
AT NO EXTRA COST



**4'x8' PLYWOOD**  
ASSOCIATION GRADE STAMP

	3/8"	1/2"	5/8"	3/4"
GIS EXTERIOR YP	11.99	15.19	18.69	20.99
CD EXTERIOR	7.89	8.19	11.39	14.19
T&G UNDERLAY	—	—	16.29	16.99

**PORCH FLOORING**  
• Clear Flat Grain • Fir

	8'	10'	12'	14'	16'
1" x 4" T & G	4.72	5.90	7.08	8.26	9.44

**Glotex Tuff-R SHEATHING**

- 1/2" x 4' x 8' (\*R-4.0) ..... \$6.39
- 3/4" x 4' x 8' (\*R-5.8) ..... \$8.89
- 1" x 4' x 8' (\*R-7.7) ..... \$11.69

\*Higher R-values mean greater insulating power  
Ask us for the fact sheet on R-values



**ORIENTED STRAND BOARD**  
• Interior or exterior use • 4' x 8'

1/4"	7/16"	3/4" T&G
\$5.99	\$6.99	\$14.49



**DIMENSION LUMBER**  
SPF

	8'	10'	12'	14'	16'	18'	20'
2"x4"	1.69	2.25	2.45	3.19	3.69	4.92	5.47
2"x6"	2.79	3.35	3.76	4.48	5.55	7.29	8.10
2"x8"	3.79	4.67	5.60	6.72	8.43	10.80	12.00
2"x10"	4.87	5.83	8.80	10.69	11.19	12.60	14.00
2"x12"	7.52	9.40	11.28	13.16	15.04	17.46	19.40

**BARN SIDING**

• 1"x8"  
• Pattern #116  
• Grade #3  
**44¢**  
PER LIN. FT.



MON.-THURS. 7:30-6:00  
FRI. 7:30-8:00  
SAT. 7:30 to 4:00  
6 DAYS A WEEK  
DELIVERY AVAILABLE



LANCASTER, PA.	ELIZABETHTOWN, PA.	CARLISLE, PA.	CHAMBERSBURG, PA.	NORTHUMBERLAND, PA.	HARRISBURG, PA.
2275 Old Phila. Pike, Rt. 340 East 717-397-4829	Rt. 230 East 717-367-1886	1840 Harrisburg Pike, US 11 717-245-0404	2155 Wayne Road, Rt. 316 East 717-263-0822	RD 1, US 11 North 717-473-8311	7365 Allentown Blvd. 717-545-4941

All Items Shown May Not Be In Stock At All Locations