

FOCUS

Pennsylvania Dairy Herd Improvement Association Management Information For Barn Use

DHIA Bylaws Committee Meets

The PA DHIA Bylaws Committee met recently and has been charged with making changes to better reflect member desires.

As part of the project to reorganize PA DHIA, a new set of bylaws were drafted and were approved to go into effect on Oct. 1, 1992.

Those bylaws were designed to provide a single membership category whereby all members would be direct members.

The new bylaws are important also in reducing sizes of membership districts, setting one director per district, creating a procedure for nominating director candidates at large, and eliminating liability at the local association board level, etc.

As a result of the recent differences over local association autonomy, the PA DHIA board rescinded the proposed bylaws and directed that a committee of members be organized to review, draft, and revise the present bylaws for proposal to the board. The revised bylaws would replace the present bylaws.

The committee is to review the current and formerly proposed bylaws, establish goals for both membership control and operational responsibility of the association, review bylaws of similar organizations to examine how other associations or cooperatives have approached this issue, and draft a revision to the current bylaws for recommendation for adoption to the board.

RELATIVE FEED VALUES: Multiple Feedstuffs as of July 31
PRICE INPUT:
 Shelled Corn Per Bushel--> \$2.80
 44% Soybean Oilmeal Per Ton> \$230.00

Crop/Feedstuff	Relative Feed Value	@ DM %
Table 1. Grains		
1 EAR CORN.....	89.96 Per Ton	85
2 EAR CORN, high moisture.....	65.83 Per Ton	65
3 EAR CORN, bushel basket.....	1.57 Per Bu.	85
4 CORN, shelled, high-moisture ...	80.81 Per Ton	72
5 OATS, spring.....	1.66 Per Bu.	90
6 BARLEY, winter.....	2.70 Per Bu.	89
7 WHEAT, winter.....	3.15 Per Bu.	86
8 RYE, winter.....	3.04 Per Bu.	88
9 SORGHUM, grain.....	2.74 Per Bu.	89
10 SOYBEANS, whole, raw.....	6.43 Per Bu.	90
Table 2. Supplements & Extenders		
11 COTTONSEED MEAL.....	10.75 Per Cwt.	93
12 BREWER'S GRAIN, wet.....	38.45 Per Ton	24
13 BREWER'S GRAIN, dried.....	146.56 Per Ton	92
14 DIST. CORN GRAIN, dried.....	163.41 Per Ton	93
15 HOMINY FEED.....	5.71 Per Cwt.	91
16 CORN GLUTEN FEED.....	7.48 Per Cwt.	90
17 WHEAT BRAN.....	5.57 Per Cwt.	89
18 WHEAT MIDS.....	6.21 Per Cwt.	90
19 BEET PULP, dried.....	4.70 Per Cwt.	91
Table 3. Hay		
20 LEGUME.....	106.79 Per Ton	87
21 MIXED, mainly legume.....	100.98 Per Ton	87
22 MIXED, mainly grass.....	82.75 Per Ton	88
23 GRASS.....	78.80 Per Ton	89
Table 4. Silages		
24 CORN.....	31.96 Per Ton	34
25 LEGUME, haycrop.....	56.84 Per Ton	47
26 MIXED, mainly legume.....	52.34 Per Ton	46
27 MIXED, mainly grass.....	41.30 Per Ton	43
28 GRASS, haycrop.....	36.15 Per Ton	40
29 SMALL GRAIN.....	40.40 Per Ton	37
30 SORGHUM-SUDAN.....	33.80 Per Ton	34

Based on nutrient values in Penn State University Feeds Library.

Program by:
 W.K. Waters, Dept. of Ag. Econ. & Rural Soc., Penn State University.

SCHEDULE OF EVENTS FOR PA. DHIA

Aug 15 Exhibit, State Holstein Picnic, Evergreen Farms, Huntingdon County
 Aug 18-20 Ag Progress Days, Rock Springs, PA

Sept 7 Service Center Closed - Labor Day Holiday
 Sept 15 DRPC Advisory Committee Meeting, State College
 Sept 17 Lycoming County Committee Meeting

Oct 7-8 PA DHIA State Board of Directors, State College

Nov 11-12 North East Caucus Meeting of National DHIA, Mid-East DHIC
 Nov 26 Service Center Closed - Thanksgiving Holiday

Dec 25 Service Center Closed - Christmas Holiday

1993

Jan 6-7 PA DHIA State Board of Directors, Erie
 Jan 26 Central District, Family House, Mifflintown 9:30 AM - 3:00 PM

Feb 8 Southeast District, Berks Co. Ag. Center, Leesport 9:30 AM - 3:00 PM
 Feb 10 Southwest District, Ramada Inn, Somerset 9:30 AM - 3:00 PM
 Feb 11 Northwest District, Venango Co 4-H, Franklin 9:30 AM - 3:00 PM
 Feb 12 Northeast District, Towanda Elks Club, Towanda 9:30 AM - 3:00 PM

Mar 19-20 1993 Annual Meeting, Pittsburgh area
 (* All members are invited to attend.)

Mar 19-20 PA DHIA State Board of Directors, following Annual Meeting, Pittsburgh

Apr 7-8 PA DHIA State Board of Directors, State College

July 7-8 PA DHIA State Board of Directors, State College

Oct 5-6 PA DHIA State Board of Directors, State College



**READ
 LANCASTER
 FARMING
 FOR COMPLETE
 AND
 UP-TO-DATE
 MARKET
 REPORTS**

ATTACH-MATIC

Hook-Up Your Wagon Tongue Automatically
 Stay In The Drivers Seat With Attach-Matic
 See It Demonstrated At Ag Progress Days
 East 5th Street

QUIK-HITCH! 4000 BARREN RD.
 OXFORD, PA 19363
 1-800-55 HITCH

MANUFACTURER'S 1 YEAR WARRANTY

USED
 EQUIPMENT

- NEW 16' Pack Drive Silo Unloaders, Complete 4,800 Ea.
- 16'-14'-12' Complete V-3 Silo Unloader
- Jamesway 24' V-3 Complete
- (2) Good Used Silo Distributors, Lancaster #1030, Complete

NEW
 STARLINE
CEN-TRAK
 POWER DRIVE UNLOADERS

Call For
 Excellent Prices!



Belarus

Sales, Parts & Service

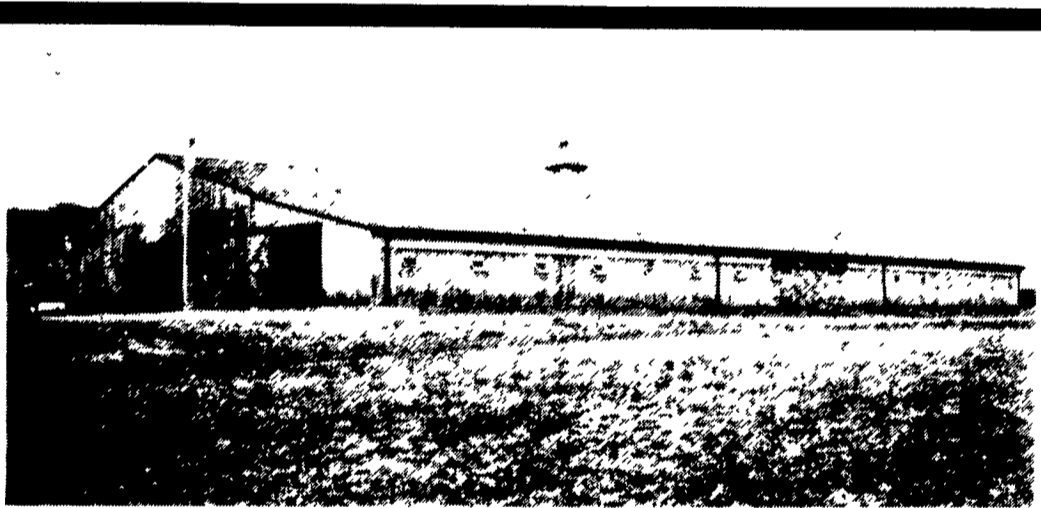
MODEL	HP	CASH
250 2WD.....	31	\$5,995
310 4WD.....	36	\$8,799
420 4WD.....	57	\$11,999
525 4WD.....	70	\$13,600
825 4WD.....	85	\$16,400
922 4WD.....	100	\$19,999
Backhoe Loader.....		\$24,500

Toy Tractor Available

★ SPECIAL: Belarus 525 -
 65 HP PTO, 4 WD, 3 Pt. Hitch, Remote Hydr. w/Power Steering
 CASH PRICE \$12,755
 Loader Available

**ROVENDALE AG &
 BARN EQUIP.**

Watsonstown, PA 17777
 717-538-9564 or 717-742-4226
 Exit 31, I-80 to I-180 Watsonstown Exit
 Hours: Mon.-Fri. 8 to 5; Sat. 8 to 12



Brecknock Builders (215) 445-7897

We Build With:

- A. Style: = Unique, To Your Spec's
- B. Pride: = Craftsmanship and quality
- C. Performance: = Completed in time and in budget

**Call To Learn How Brecknock
 Can Help Make Your Next
 Building A Reality.
 Specializing In Postframe:
 All Steel Buildings**