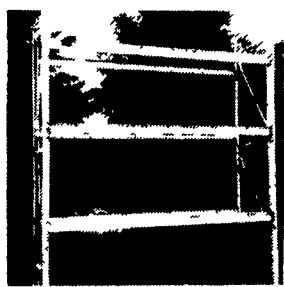


1a CONSTRUCTION EQUIPMENT

C.S. COLEMAN

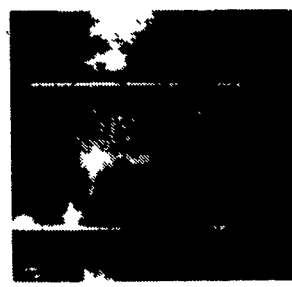
Phone: (717) 692-4444 R.D. #1 Box 371
 Phone: (717) 692-4910 Millersburg,
 Fax: (717) 692-4074 PA 17061



Pallet Racking & Shelving



955 K Cat/Loader



60 & 100 KW Gen. Sets



Portable Air Compressors

INDUSTRIAL ITEMS

- Portable Welder.....\$1250
- Portable Air Comp.....\$295
- Parts Washers.....\$125
- Water & Trash Pumps..... Call
- 10 Ton Floor Jacks.....\$395
- Truck Trans. Jack.....\$500
- 10 HP Elec. Mtrs.....\$75
- 6 Ft. Metal Brake.....\$1,800
- Southbend Lathe.....\$1,800
- Machline, Tooling-Chucks, Etc.
- Manual Chain Hoist.....\$200
- Steel Cable- Many Sizes
- 1250 Gal. SS Tanks.....\$1,250
- H.D. Steam Cleaners.\$1,250

WHEELS

- All Purpose Forklift (RT)
- 86 F-350 Stake Dump
- 83 C-30 High Cube Van
- 910 Cat Rubber Tire Loader
- 955K Cat Crawler-Loader
- 45' Closed Van Trailer
- Dodge Military 4x4
- 1984 F-150 4x4 Loaded
- 1980 F700 C&C 5 Spd.
- 1983 Dodge w/Van Body
- 85 F-350 Stake Dump
- 85 Camaro Berlina CP
- Small Gov't Utility Trailers
- Other Trailers Avail.

MISCELLANEOUS!!

- Medical Storage Cabinets (SS)
- Deep Freezer & Cold Food Table
- 3" & 4" Alum. & Stainless
- Valves w/Couplers
- 9 ft. x 12 ft. Walk In Cooler Unit
- 15KW - 60 KW & 100KW Gen. Sets
- Wood Hog - Montgomery - NICE
- Alum.-Stainless & Steel Sheeting
- 150 Used File Cabinets In Stock
- Bar Grating & Decking (Steel)
- New 353 Crank Shafts & Connecting Rods
- Pallet Racking & Shelving- All Types
- If You Need It, We Can Find It, Please Call With Your Needs

2 FARM EQUIPMENT WANTED

Cab w/air to fit 4020 JD. 609-298-4718.
 Cattle dehorners prefer w/ wood handles; JD 350 track loader, very reasonable price. 814-627-5149.
 Ford 3000 tractor for parts, any condition. (814)427-2999.
 W-40 McCormick Deering Engine or Complete Tractor any Condition. 301-249-2427.
 WANTED: 4WD tractor, 250+ H.P., price to sell. 410-822-7578 after 6PM.
 WANTED: David Brown 990 or 995, salvage considered. Gravity bin w/o gear. Cecil Co. (410)6580-2565.

WANTED: Loader, front end for JD 2630. 410/392-0146 or 410/885-5850.
 WANT: Field chopper, 2R, 30" and grass head JD or NH 800 series. Southeast PA, DE or MD area (302)284-8774.
 WANT: JD sickle bar, No 20, mower for JD 40 tractor. Must be in good condition. Floyd Moore, RD#1, Box 206, Fredericktown, PA 15333.
 Wanted paying \$12 a hundred for tobacco lath, cash any amounts. Call 717-684-0599.

WANTED:

USED FORD & KUBOTA TRACTORS

Call 717-949-6501 Daytime

WENGERS, INC.

251 South Race St., Myerstown, PA 17067

717-866-2130

HOURS: Mon.-Fri. 7:30 to 5:00; Sat. 7:30 To Noon

NIGHTS, PHONE:

717-866-7147
717-273-9089

FAX

717-866-4300

(16) BACKHOES

- (9) Hoe Attachments.....From \$2,000
- Dig It 148 Compact.....\$5,500
- Case 530CK - Diesel - 1965.....\$5,900
- MF 40 - 1970 - Diesel.....\$5,900
- Case 580B - Diesel - 1972.....\$8,900
- IH 260A - Diesel - 1979.....\$8,900
- IH 2400B - Diesel - 1975.....\$9,500
- IH 270A - 1979 - Diesel.....\$10,500
- JD 855 Diesel - 4x4 - Compact.....\$12,650
- JD 310B - 1983 - Diesel.....\$13,500
- JD 500C - 1983 - Diesel.....\$14,500
- Case 780 - Diesel - 1979.....\$14,500
- JD 510 - 1980 - Extend.....\$15,000
- JD 510 - 1981 - ROPS.....\$16,000
- Case 580 Super E - Cab 1986.....\$16,500
- Dynahoe 200B - 4x4 - Big.....\$16,500
- JD 710B - EROPS - 1983.....\$26,500

MISCELLANEOUS CONSTRUCTION

- (100+) New & Used Hoe Buckets..... COME SEE
- (75) Loader Buckets..... COME SEE
- (75) Set Forklift Forks..... COME SEE
- (5) Tree Planter.....\$295-\$795
- (4) Jumpin Jack Tampers.....\$495-\$695
- Ripper For Crawler.....\$1,000
- Root Rake - 7'.....\$1,200
- Giant Leaf Vacuum..... 2 For \$1,200
- (4) Sweepers.....\$500 - \$2,000
- (2) Tree Shearer.....\$600/\$2,000
- Wacker W75 Walk Behind Roller.....\$2,500
- Schramm 160 Air Comp.....\$3,000
- Large Snowblower For Loader.....\$3,000
- Vermeer T520 3 Pt. Tree Spade.....\$3,500
- 1987 1 1/2 Ton Vibratory Roller.....\$3,500
- Vermeer Sump Grinder.....\$3,500
- IH 140 w/Power Broom- 1972.....\$3,900
- Vibratory Pull Type Roller.....\$3,900
- Oliver 1950 4WD Tractor.....\$3,999
- (6) Sheeps Foot 2 Drum Roller.....\$2,500/\$4,500
- Huber Maintainer.....\$4,500
- (2) JD 5010 Scraper.....\$4,900/\$5,900
- Ingersol 175 Diesel Air Compressor.....\$6,900
- Construction Ramp, 36' Long.....\$6,900
- Huber F1500 Grader.....\$7,900
- Badger Diesel Disc Chipper- 16".....\$8,900
- JD 760 Scraper.....\$10,900
- Insley H1000 Excavator- 1974.....\$13,500
- Bucyrus Erie 45C Truck Crane..... CALL

(15) CRAWLER LOADERS

- Case 350 - Diesel 1971.....\$4,500
- Case 450 - ROPS - 1969.....\$8,500
- JD 350 - Diesel - 1987.....\$8,900
- (2) JD 450 - Diesel - 1970.....\$8,250/\$8,900
- Case 450 - ROPS - 1976.....\$9,500
- JD 450B - ROPS - 1972.....\$9,900
- IH 100E - ROPS - 1975.....\$10,900
- IH 125C Powershift - 1970.....\$12,900
- Case 1150C - ROPS - 1981.....\$18,500
- (2) Case 455C - ROPS - 1988/1986..... Ea. \$22,500
- Case 1155D - 4NI - 1983.....\$24,500
- CAT 977L - ROPS - Ripper- 1975.....\$29,500
- CAT 983 - Cab - 1969.....\$35,000

(7) RUBBER TIRE LOADERS

- Hough 90 Diesel - 1959.....\$4,000
- Michigan 55 III - Cab - Gas - 1968.....\$4,500
- Terex 7220 - Cab - 1967.....\$8,900
- Fiat 545 - Cab - 1964.....\$10,500
- Ford A62 - Cab - 1976.....\$14,500
- JD 644B - Cab - 1978.....\$22,500
- Cat 950 - Cab - 1970.....\$25,000

(4) SKID LOADERS

- Clark 825 Diesel - As Is.....\$3,900
- JD 90 - Gas - 1980.....\$4,900
- Case 1845B - Gas - 1983.....\$8,900
- NH 785 - Diesel- 1988.....\$8,900

(13) TRUCKS/CARS

- 1982 Yamaha 650 Maxim Cycle.....\$1,500
- (2) 1985 Honda Accord LX - 4 Dr., - 5 Spd..... Each \$3,999
- 1977 IH 31' Bucket Truck.....\$5,900
- (2) 1979 Ford F600 31' Bucket Truck.....\$6,900
- 1982 Ford 8000 Dump - Diesel.....\$6,900
- 1985 Ford E350 Mini Bus - V8 Gas - 18 Pass. - Double Air.....\$7,900
- 1980 Ford F600 28' Bucket Truck.....\$8,900
- 1972 Olds Cutlass Conv. - 455 - W30.....\$9,500
- 1988 Chevy Suburban Silverado 4x4.....\$10,800
- 1986 Chevy Bonus Cab Dually.....\$12,800
- 1990 GMC Top Kick Dump - 2,000 Miles.....\$19,999

(2) TRACTORS WITH LOADERS

- Case 430 - Gas - 3 Pt. - PTO - 1965. \$4,900
- IH 260A - Diesel - 3 Pt. - PTO - 1977. \$7,900

(8) DOZERS

- IH TD5 - Winch - No Blade.....\$2,500
- AC HD6 - Diesel.....\$4,900
- JD 350B-6 Way.....\$4,900
- MF 400 Diesel.....\$6,500
- JD 350C-6 Way - 1984.....\$12,500
- IH TD7E - 6 Way - 1984.....\$17,500
- Komatsu D65E - ROPS.....\$17,500
- Case 850C - ROPS - 6 Way - 1981. \$22,500

(25) TRAILERS

- 1991 5 Ton - Tag-A-Long.....\$1,895
- (8) 1992 5 Ton Tag-A-Long.....From \$1,995
- 1979 3 Axle Tag-A-Long - 12 Ton.....\$1,999
- 1977 2 Axle 7 Ton Tag-A-Long.....\$2,400
- 1978 3 Axle 11 Ton Tag-A-Long.....\$2,700
- 1966 Tag-A-Long- 20 Ton.....\$2,900
- 2 Axle 12 Ton Tag-A-Long.....\$2,900
- 18 Ton Tag-A-Long.....\$2,900
- 13 Ton 3 Axle Tag-A-Long.....\$3,400
- 1984 11 Ton Tag-A-Long.....\$3,500
- 1974 15 Ton Gooseneck.....\$3,999
- 1987 10 Ton Tag-A-Long.....\$4,200
- (2) 35 Ton Lowboys.....\$3,900/\$4,500
- 1968 40 Ton Lo-Boy.....\$4,900
- 1992 9 Ton Tag-A-Long.....\$5,850
- 1992 10 Ton Tag-A-Long.....\$6,450
- 1979 Load King 35 Ton Folding Gooseneck.....\$13,900

(8) FORKLIFTS

- White 5000 Lb. Towmotor - Gas.....\$2,400
- White 4000 Lb. - LP Gas - Air Tires....\$4,900
- JD 480 Diesel.....\$4,900
- Yale 15000 Lb. - Diesel.....\$6,900
- Yale 6000 Lb. - Diesel.....\$7,900
- Clark - 8,000 Lb. - 28' - RT - Gas.....\$10,500
- Komatsu FG40 - 1980 - 8,000 Lb. - Triple Mast - Air Tire.....\$11,500
- Pettibone B66-4x4-Extendo..... CALL

(4) LOG SKIDDERS

- Clark Ranger 666B - 1976.....\$8,500
- Clark Ranger 664B - 1977.....\$8,750
- JD 440A - Diesel - 1970.....\$9,900
- JD 440C - Diesel - 1980.....\$18,500

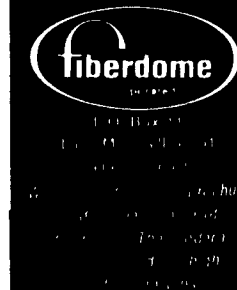
3 SILOS AND UNLOADERS

12X50 Ribstone Silo w/ Roof, Good Condition. 410-692-5072.
 16' Badger Unloader, 7HP, Pack Drive, Used Very Little. \$2600. 717-966-2753.
 2070 Harvestore with Goliath unloader; \$6,000. (814)267-4891.
 20'x40' White top harvester silo w/unloader, torn down, ready to load or will deliver. Asking \$3,975. (717)729-7117.
 2560 Harvestore w/ completely rebuilt Goliath unloader & motor. 215/827-7687 Northern Chester Co.
 FOR SALE: Stoltzfus 14' all hyd. chain boom, lime body, like new, used very little \$6000 or best offer. 703-948-6196.
 For Sale 30 O.A. Smith Silo Sheets- Model AU-51-20 Unloader- Mounting Box \$3500. 717-662-2742 Tioga County.
 Gehl 99 silage blower, \$1500 OBO. 410-329-6380 weekdays.

Fiberglass Bulk Feed Bins



Capacity from 25 ton to 40 ton
 Longest feed span 30 ft.
 Non-splintering. Fiberglass. Available



DETWEILER SILOS

New Concrete Stave Silos
 New and Used Extensions
 All Types Silo Repair
 Teardown and Rebuild
 Silo Relining

Write or call:

808 Oakville Road, Newville, PA 17241
 (717) 776-6321 • (717) 532-3039